

NEW MEXICO OIL CONSERVATION COMMISSION
WELL LOCATION AND ACREAGE DEDICATION

Form C-102
Supersedes C-128
Effective 1-1-65

All distances must be from the outer boundaries of the Section.

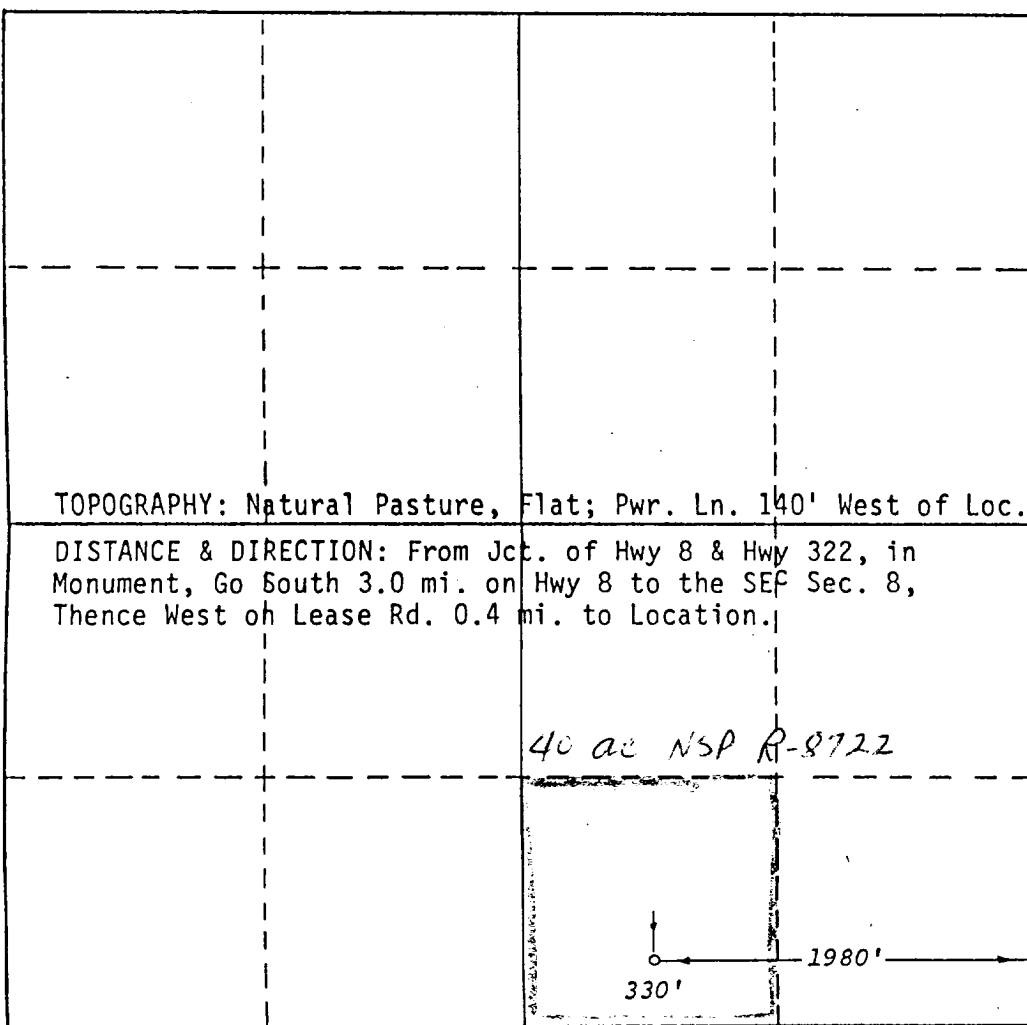
Operator HORIZON OIL & GAS CO.		Lease Anderson		Well No. 1-8	
Unit Letter 0	Section 8	Township 20-S	Range 37-E	County Lea	
Actual Footage Location of Well: <div style="display: flex; justify-content: space-between;"> 330 feet from the South line and 1980 feet from the East line </div>					
Ground Level Elev: 3538	Producing Formation Tubb	Pool Monument	Dedicated Acreage 40 Acres		

1. Outline the acreage dedicated to the subject well by colored pencil or hachure marks on the plat below.
2. If more than one lease is dedicated to the well, outline each and identify the ownership thereof (both as to working interest and royalty). *Only one lease involved.*
3. If more than one lease of different ownership is dedicated to the well, have the interests of all owners been consolidated by communitization, unitization, force-pooling, etc? *N.A.*

☐ Yes ☐ No If answer is "yes," type of consolidation _____

If answer is "no," list the owners and tract descriptions which have actually been consolidated. (Use reverse side of this form if necessary.) _____

No allowable will be assigned to the well until all interests have been consolidated (by communitization, unitization, forced-pooling, or otherwise) or until a non-standard unit, eliminating such interests, has been approved by the Commission.



CERTIFICATION

I hereby certify that the information contained herein is true and complete to the best of my knowledge and belief.

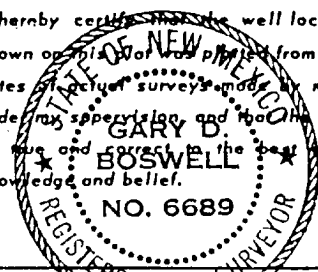
Curtis F. Covington
Name **Curtis F. Covington**
Engineer

Position
Horizon Oil & Gas Co.

Company
9-20-88

Date

I hereby certify that the well location shown on this plat was plotted from field notes of actual surveys made by me or under my supervision, and that the same is true and correct to the best of my knowledge and belief.



Date Surveyed
June 17, 1987

Registered Professional Engineer and/or Land Surveyor

Gary D. Boswell
Certificate No. **6689**

