

NEW MEXICO OIL CONSERVATION COMMISSION
WELL LOCATION AND ACREAGE DEDICATION PLAT

Form O-107
Superseded 6-1-88
Effective 1-1-85

All distances must be from the outer boundaries of the Section

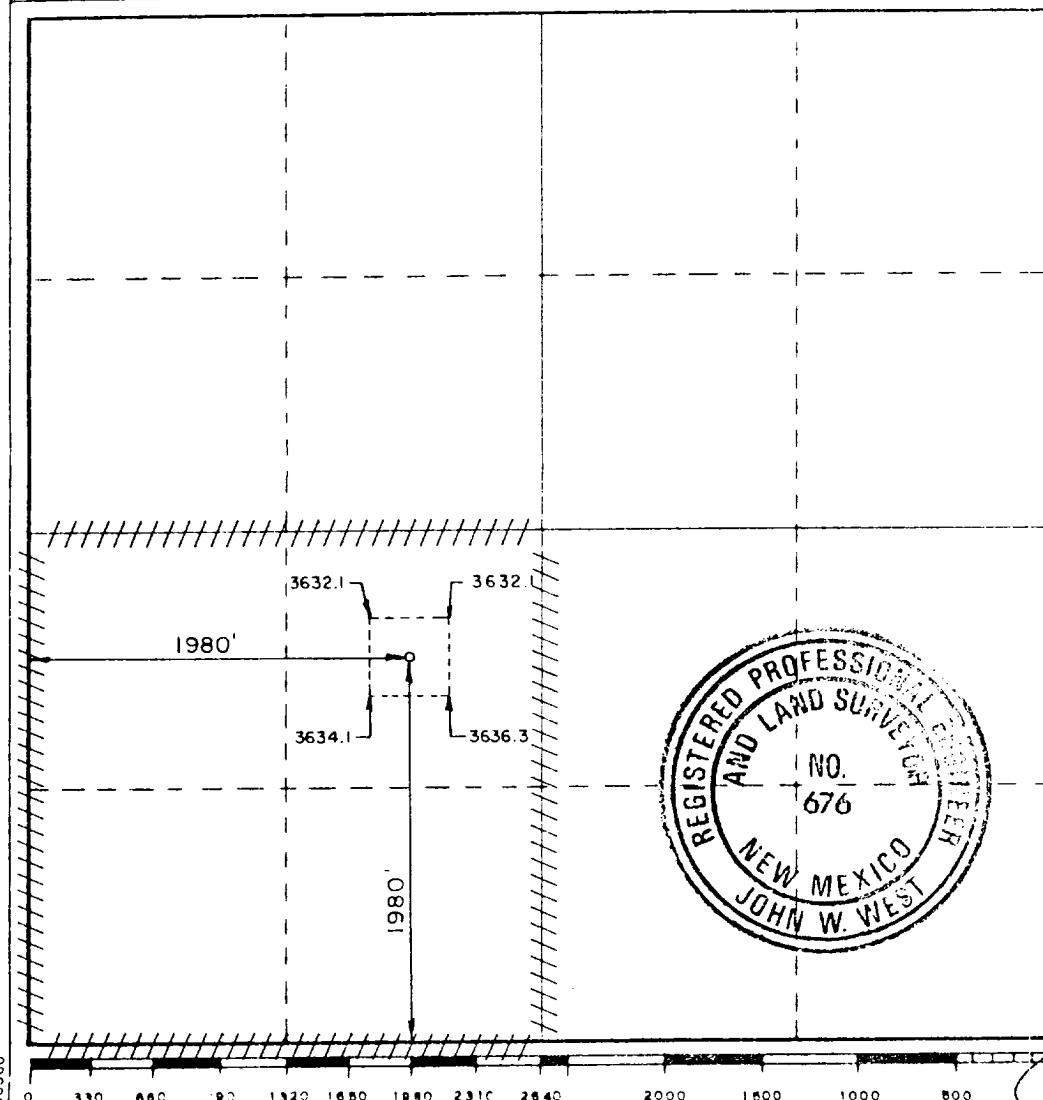
Operator Estoril Producing Corp.			Lease Union A Federal		Acres 2
Unit Letter K	Section 10	Township 20 South	Range 34 East	County Lea	
Actual Footage Location of Well:					
1980 feet from the South line and		1980 feet from the West line			
Ground Level Elev. 3634.2	Producing Formation Morrow	Feet Lea (Penn)	Lea (Penn) 160 Acres		

1. Outline the acreage dedicated to the subject well by colored pencil or hatchure marks on the plat below.
2. If more than one lease is dedicated to the well, outline each and identify the ownership thereof (both as to working interest and royalty).
3. If more than one lease of different ownership is dedicated to the well, have the interests of all owners been consolidated by communitization, unitization, force-pooling, etc?

☐ Yes ☐ No If answer is "yes" type of consolidation _____

If answer is "no" list the owners and tract descriptions which have actually been consolidated. (Use reverse side of this form if necessary.) _____

No allowable will be assigned to the well until all interests have been consolidated (by communitization, unitization, forced-pooling, or otherwise) or until a non-standard unit, eliminating such interests, has been approved by the Commission.



CERTIFICATION

I hereby certify that the information contained herein is true and complete to the best of my knowledge and belief.

Terry W. Franklin
Name

Terry W. Franklin

Agent

Estoril Producing Corp.

March 2, 1988

I hereby certify that the well location shown on this plat was plotted from field notes of actual surveys made by me or under my supervision, and that the same is true and correct to the best of my knowledge and belief.

Date Surveyed

February 23, 1988

Registered Professional Engineer and Land Surveyor

John W. West

Certificate No. JOHN W. WEST, 676

RONALD J. EIDSON, 5239

RECEIVED
APR 18 1989
CCP
HOBBS OFFICE

88-667274
173