

Submit to Appropriate District Office  
 State Lease - 4 copies  
 Fee Lease - 3 copies

State of New Mexico  
 Energy, Minerals and Natural Resources Department

Form C-102  
 Revised 1-1-89

**OIL CONSERVATION DIVISION**

P.O. Box 2088  
 Santa Fe, New Mexico 87504-2088

DISTRICT I  
 P.O. Box 1980, Hobbs, NM 88240

DISTRICT II  
 P.O. Drawer DD, Artesia, NM 88210

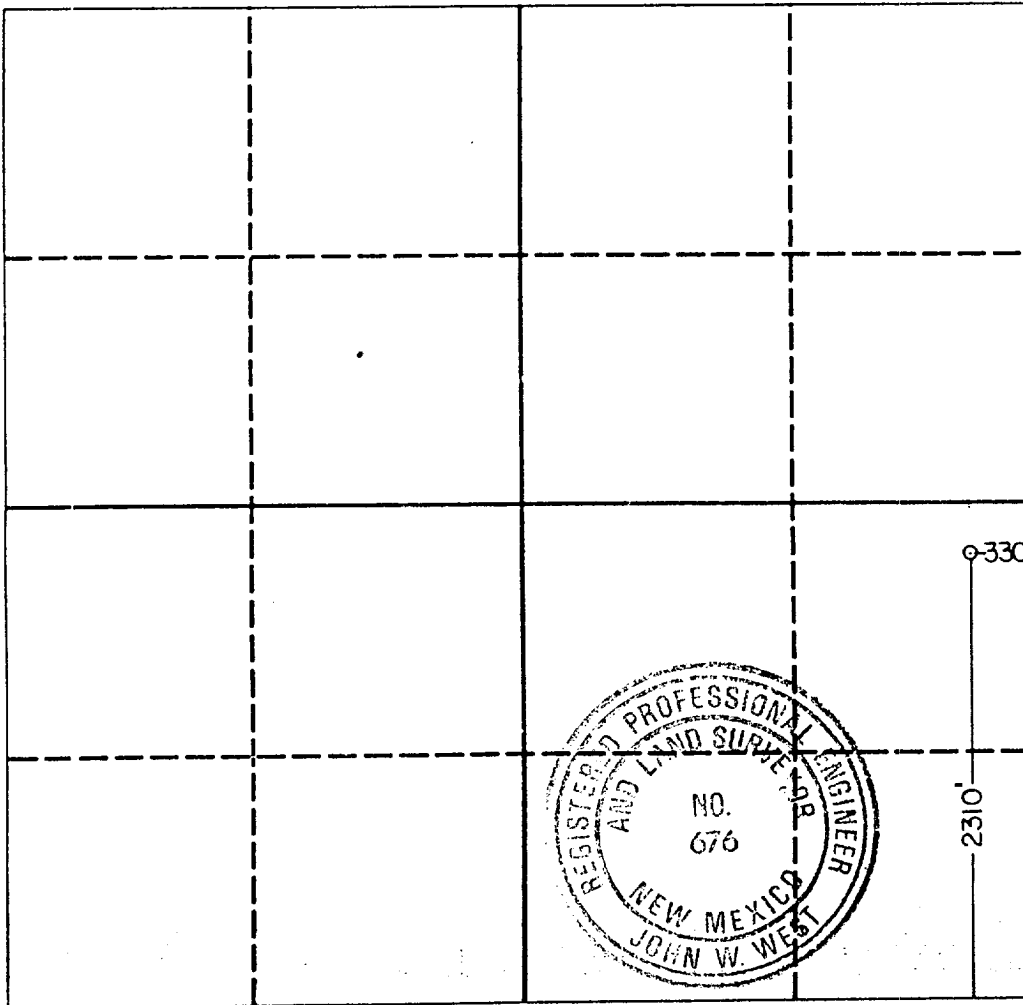
DISTRICT III  
 1000 Rio Brazos Rd., Aztec, NM 87410

**WELL LOCATION AND ACREAGE DEDICATION PLAT**

All Distances must be from the outer boundaries of the section

Operator WESTERN RESERVES OIL CO. INC.		Lease NADINE 27		Well No. 1
Unit Letter I	Section 27	Township 19 South	Range 38 East	County Lea
Actual Footage Location of Well: 2310 feet from the South line and 330 feet from the East line				
Ground level Elev. 3592.6	Producing Formation ABO	Pool NADINE DRINKARD ABO	Dedicated Acreage: 40 Acres	

- Outline the acreage dedicated to the subject well by colored pencil or hatchure marks on the plat below.
- If more than one lease is dedicated to the well, outline each and identify the ownership thereof (both as to working interest and royalty).
- If more than one lease of different ownership is dedicated to the well, have the interest of all owners been consolidated by communitization, unitization, force-pooling, etc.?  
 Yes  No If answer is "yes" type of consolidation NA  
 If answer is "no" list the owners and tract descriptions which have actually been consolidated. (Use reverse side of this form if necessary.)  
 No allowable will be assigned to the well until all interests have been consolidated (by communitization, unitization, forced-pooling, or otherwise) or until a non-standard unit, eliminating such interest, has been approved by the Division.



**OPERATOR CERTIFICATION**  
 I hereby certify that the information contained herein is true and complete to the best of my knowledge and belief.

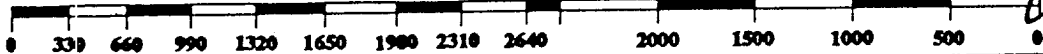
*Christopher P. Renaud*  
 Signature  
 Christopher P. Renaud  
 Printed Name  
 Petroleum Engineer  
 Position  
 Western Reserves Oil Co.  
 Company  
 2-15-90  
 Date

**SURVEYOR CERTIFICATION**  
 I hereby certify that the well location shown on this plat was plotted from field notes of actual surveys made by me or under my supervision, and that the same is true and correct to the best of my knowledge and belief.

Date Surveyed  
 January 25, 1990

*Ronald J. Eidson*  
 Signature & Seal of Professional Surveyor

Certificate No. JOHN W. WEST, 676  
 RONALD J. EIDSON, 3239



121830

March 5/19/93  
**ELF**

FEB 18 1993

OCD  
HOURS OFFICE