



STATE OF NEW MEXICO  
ENERGY AND MINERALS DEPARTMENT  
OIL CONSERVATION DIVISION  
HOBBS DISTRICT OFFICE

GARREY CARRUTHERS  
GOVERNOR

4-13-90

POST OFFICE BOX 1680  
HOBBS NEW MEXICO 88241-1680  
(505)383-6161

OIL CONSERVATION DIVISION  
P. O. BOX 2088  
SANTA FE, NEW MEXICO 87501

711-2783

RE: Proposed:

MC \_\_\_\_\_  
DHC \_\_\_\_\_  
NSL ☒ \_\_\_\_\_  
NSP \_\_\_\_\_  
SWD \_\_\_\_\_  
WFX \_\_\_\_\_  
PMX \_\_\_\_\_

Gentlemen:

I have examined the application for the:

*Sirgo Operating Inc. West Pearl Queen Unit #191-M*  
Operator Lease & Well No. Unit S-T-R 28-19-35-

and my recommendations are as follows:

*1310/5+ W OK (filed revised application)*

Yours very truly,

*Jerry Sexton*  
Jerry Sexton  
Supervisor, District 1

/ed

# **Sirgo Operating, Inc.**

P. O. Box 3531, Midland, Texas 79702 (915) 685-0878

April 12, 1990

Michael E. Stogner  
NMOCD  
P.O. Box 2088  
Santa Fe, New Mexico 87504-2088

Re: Unorthodox Location  
West Pearl Queen Unit #191  
T19S, R35E  
Lea County, New Mexico

Mr. Stogner:

This letter shall serve as our request to have the following  
unorthodox location approved by your office.

1310' FSL 1310' FWL, Sec. 28, Unit M, T19S, R35E

On the attached plat, you will note our location lies within the  
unit boundaries of the West Pearl Queen Unit. We offset ourselves  
on these locations. We are requesting approval of this location  
because it will allow us to establish a more efficient waterflood  
pattern within the unit.

Should you have any questions, please call.

Sincerely,



Bonnie Atwater  
Production Technician

/ba

attachments

✓ cc: NMOCD - Hobbs

NEW MEXICO OIL CONSERVATION COMMISSION  
WELL LOCATION AND ACREAGE DEDICATION PLAT

Form C-102  
Supersedes C-128  
Effective 1-1-65

All distances must be from the outer boundaries of the Section.

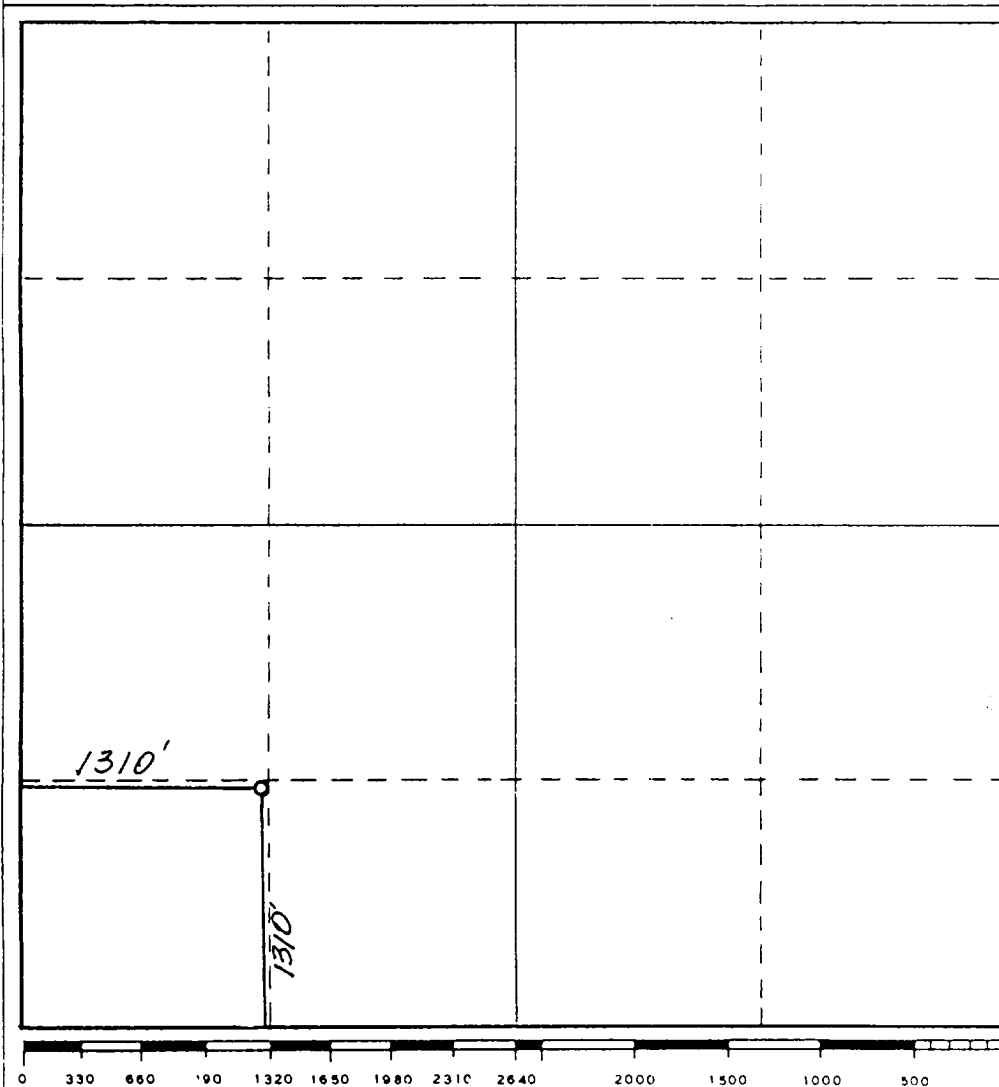
Operator <b>SIRGO OPERATING, INC.</b>			Lease <b>WEST PEARL QUEEN UNIT</b>		Well No. <b>191</b>
Unit Letter <b>M</b>	Section <b>28</b>	Township <b>19 South</b>	Range <b>35 East</b>	County <b>Lea County, N.M.</b>	
Actual Footage Location of Well: <b>1310</b> feet from the <b>South</b> line and <b>1310</b> feet from the <b>West</b> line					
Ground Level Elev. <b>3722.</b>	Producing Formation <b>QUEEN</b>		Pool <b>PEARL QUEEN</b>	Dedicated Acreage <b>40</b> Acres	

1. Outline the acreage dedicated to the subject well by colored pencil or hatchure marks on the plat below.
2. If more than one lease is dedicated to the well, outline each and identify the ownership thereof (both as to working interest and royalty).
3. If more than one lease of different ownership is dedicated to the well, have the interests of all owners been consolidated by communitization, unitization, force-pooling, etc?

☒ Yes ☐ No If answer is "yes," type of consolidation Unitization, R-2729

If answer is "no," list the owners and tract descriptions which have actually been consolidated. (Use reverse side of this form if necessary.) \_\_\_\_\_

No allowable will be assigned to the well until all interests have been consolidated (by communitization, unitization, forced-pooling, or otherwise) or until a non-standard unit, eliminating such interests, has been approved by the Commission.



CERTIFICATION

I hereby certify that the information contained herein is true and complete to the best of my knowledge and belief.

*Bonnie Atwater*

Name  
**Bonnie Atwater**

Position  
**Production Technician**

Company  
**Sirgo Operating, Inc.**

Date  
**April 12, 1990**

**DAN R. REDDY**  
NEW MEXICO  
I hereby certify that the well location shown on this plat was plotted from field notes of actual surveys made by me or under my supervision, and that the same is true and correct to the best of my knowledge and belief.  
**REGISTERED PROFESSIONAL ENGINEER**

Date Surveyed  
**March 30, 1990**

Registered Professional Engineer  
and/or Land Surveyor

*Dan R. Reddy*

Certificate No.  
**NM PE&LS NO. 5412**



# **Sirgo Operating, Inc.**

P. O. Box 3531, Midland, Texas 79702 (915) 685-0878

April 4, 1990

Michael E. Stogner  
NMOCD  
P.O. Box 2088  
Santa Fe, New Mexico 87504-2088

Re: Unorthodox Location  
West Pearl Queen Unit #191  
T19S, R35E  
Lea County, New Mexico

Michael:

This letter shall serve as our request to have the following unorthodox location approved by your office.

1320' FSL 1320' FWL Sec. 28, Unit M, T19S, R35E

On the attached plat, you will note our location lies within the unit boundaries of the West Pearl Queen Unit. We offset ourselves on these locations. We are requesting approval of this location because it will allow us to establish a more efficient waterflood pattern within the unit.

Should you have any questions, please call.

Sincerely,

*Bonnie Atwater*

Bonnie Atwater  
Production Technician

/ba

attachments

✓cc: NMOCD - Hobbs

*We would like to  
drill this well as  
soon as you can  
approve this.  
Thank you*

NEW MEXICO OIL CONSERVATION COMMISSION  
WELL LOCATION AND ACREAGE DEDICATION PLAT

Form C-102  
Supersedes C-128  
Effective 1-1-65

All distances must be from the outer boundaries of the Section.

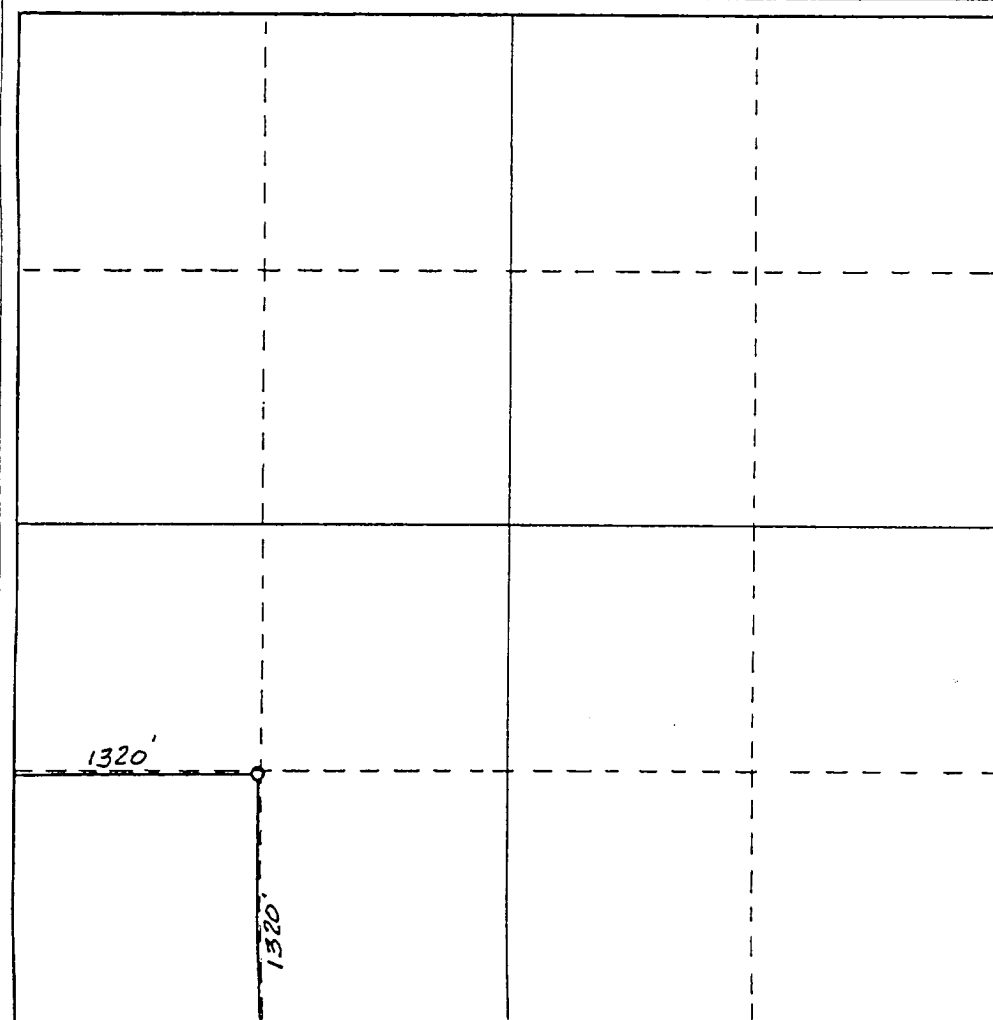
Operator <b>SIRGO OPERATING, INC.</b>			Lease <b>WEST PEARL QUEEN UNIT</b>		Well No. <b>191</b>
Unit Letter <b>M</b>	Section <b>28</b>	Township <b>19 South</b>	Range <b>35 East</b>	County <b>Lea County, N.M.</b>	
Actual Footage Location of Well: <b>1320</b> feet from the <b>South</b> line and <b>1320</b> feet from the <b>West</b> line					
Ground Level Elev. <b>3722.</b>	Producing Formation <b>QUEEN</b>		Pool <b>PEARL QUEEN</b>		Dedicated Acreage <b>40</b> Acres

- Outline the acreage dedicated to the subject well by colored pencil or hatchure marks on the plat below.
- If more than one lease is dedicated to the well, outline each and identify the ownership thereof (both as to working interest and royalty).
- If more than one lease of different ownership is dedicated to the well, have the interests of all owners been consolidated by communitization, unitization, force-pooling, etc?

☒ Yes ☐ No If answer is "yes," type of consolidation Unitization, R-2728

If answer is "no," list the owners and tract descriptions which have actually been consolidated. (Use reverse side of this form if necessary.)

No allowable will be assigned to the well until all interests have been consolidated (by communitization, unitization, forced-pooling, or otherwise) or until a non-standard unit, eliminating such interests, has been approved by the Commission.



CERTIFICATION

I hereby certify that the information contained herein is true and complete to the best of my knowledge and belief.

*Bonnie Atwater*

Name

Bonnie Atwater

Position

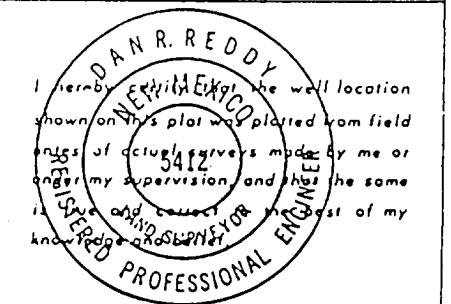
Production Technician

Company

Sirgo Operating, Inc.

Date

April 4, 1990



Date Surveyed

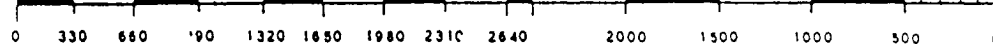
March 30, 1990

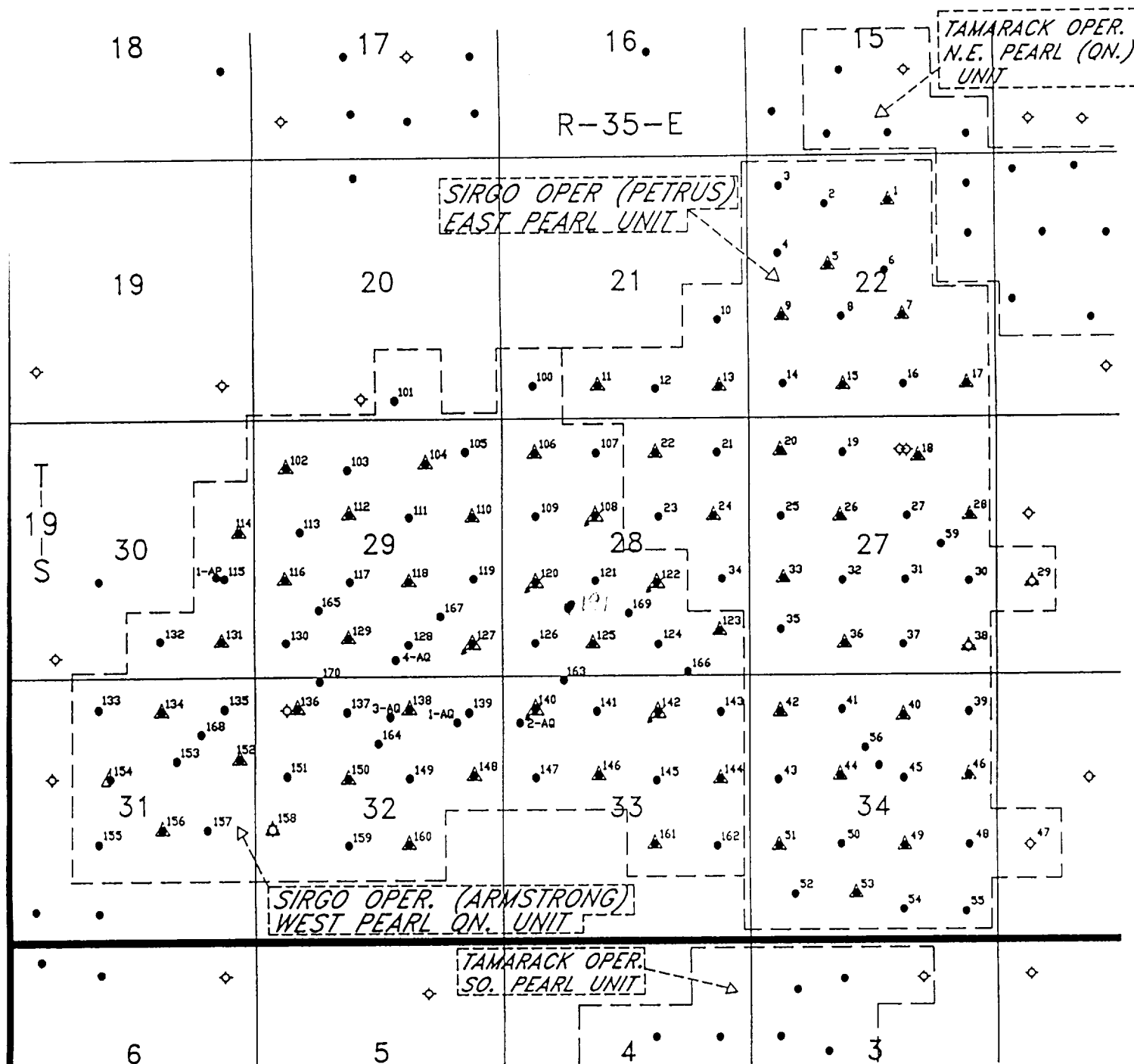
Registered Professional Engineer  
and/or Land Surveyor

*Dan R. Reddy*

Certificate No.

NM PE&LS NO. 5412





LEGEND:

- PRODUCER
- ◊ ABANDONED PRODUCER
- ▲ WATER INJECTION WELL
- ▲ ACTIVE INJECTOR
- ▲ ABANDONED INJECTOR
- ▲ FORMER INJECTOR - RETURNED TO PRODUCER

BASE MAP

SIRGO OPERATING, INC.  
WEST PEARL QUEEN UNIT  
EAST PEARL QUEEN UNIT  
PEARL QUEEN FIELD  
LEA COUNTY, NEW MEXICO

Map Scale  
0 1000' 2000'

Date: 8-14-89

T. SCOTT HIGGINS & ASSOCIATES, INC.  
REGISTERED PROFESSIONAL ENGINEERS