

Submit to Appropriate
District Office
State Lease - 4 copies
Fee Lease - 3 copies

State of New Mexico
Energy, Minerals and Natural Resources Department

Form C-102
Revised 1-1-89

OIL CONSERVATION DIVISION

P.O. Box 2088

Santa Fe, New Mexico 87504-2088

DISTRICT I

P.O. Box 1980, Hobbs, NM 88240

DISTRICT II

P.O. Drawer DD, Artesia, NM 88210

DISTRICT III

1000 Rio Brazos Rd., Aztec, NM 87410

WELL LOCATION AND ACREAGE DEDICATION PLAT

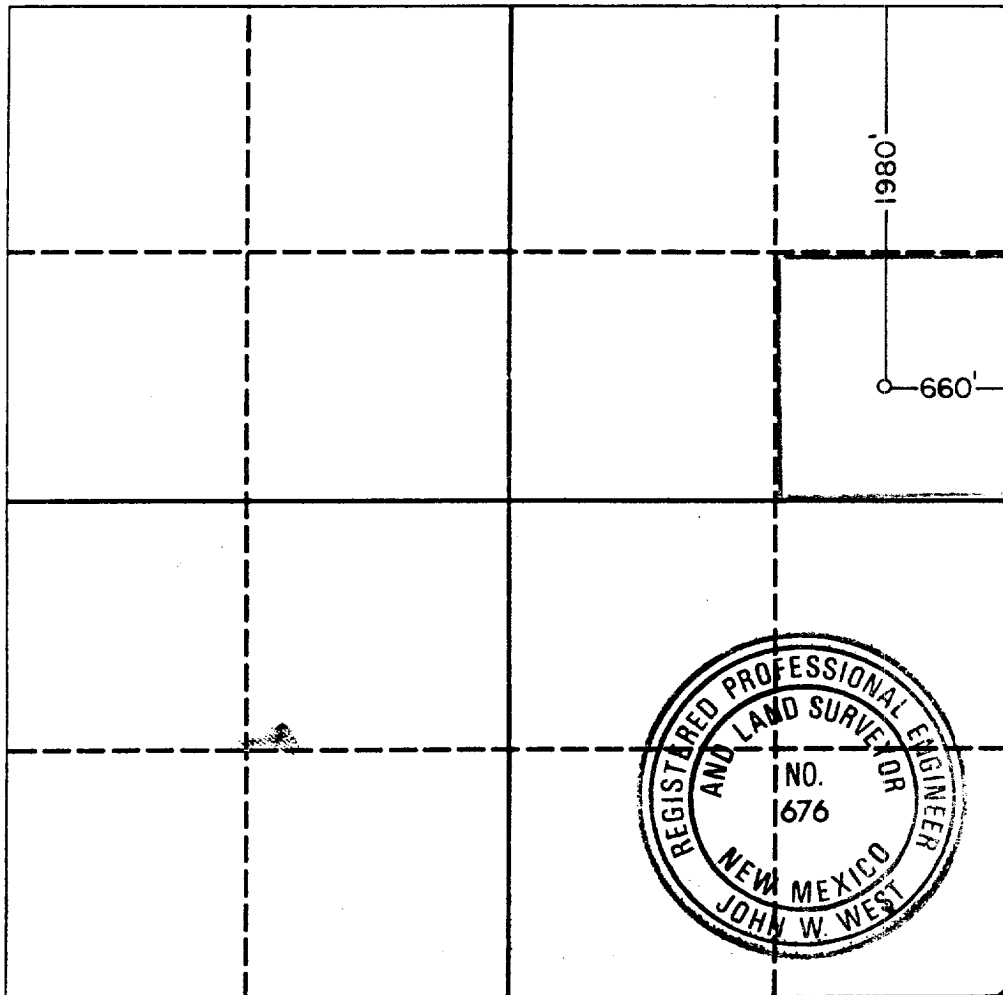
All Distances must be from the outer boundaries of the section

Operator LBO NEW MEXICO			Lease Alyssa		Well No. 1
Unit Letter H	Section 27	Township 19 South	Range 38 East	County Lea	
Actual Footage Location of Well: 1980 feet from the North line and 660 feet from the East line					
Ground level Elev. 3589.9	Producing Formation ABO	Pool Nadine DRINKARD / ABO		Dedicated Acreage: 40 Acres	

1. Outline the acreage dedicated to the subject well by colored pencil or hatchure marks on the plat below.
2. If more than one lease is dedicated to the well, outline each and identify the ownership thereof (both as to working interest and royalty).
3. If more than one lease of different ownership is dedicated to the well, have the interest of all owners been consolidated by communitization, unitization, force-pooling, etc.?
☐ Yes ☒ No If answer is "yes" type of consolidation

If answer is "no" list the owners and tract descriptions which have actually been consolidated. (Use reverse side of this form if necessary.)

No allowable will be assigned to the well until all interests have been consolidated (by communitization, unitization, forced-pooling, or otherwise) or until a non-standard unit, eliminating such interest, has been approved by the Division.



OPERATOR CERTIFICATION

I hereby certify that the information contained herein is true and complete to the best of my knowledge and belief.

Donald A. Turner
Signature

DONALD A. TURNER
Printed Name

GEOLGIST
Position

LBO NEW MEXICO INC.
Company

9-12-90
Date

SURVEYOR CERTIFICATION

I hereby certify that the well location shown on this plat was plotted from field notes of actual surveys made by me or under my supervision, and that the same is true and correct to the best of my knowledge and belief.

September 6, 1990
Date Surveyed

Signature & Seal of Professional Surveyor

John W. West
Signature

JOHN W. WEST, 676
Certification No.

RONALD J. EIDSON, 3239

06/23/90

RECEIVED

SEP 11 1990

OCD
HOSSE OFFICE