

Submit to Appropriate District Office
State Lease - 6 copies
Fee Lease - 5 copies

State of New Mexico
Energy, Minerals and Natural Resources Department

Form C-101
Revised 1-1-89

OIL CONSERVATION DIVISION
P.O. Box 2088
Santa Fe, New Mexico 87504-2088

DISTRICT I
P.O. Box 1980, Hobbs, NM 88240

DISTRICT II
P.O. Drawer DD, Artesia, NM 88210

DISTRICT III
1000 Rio Brazos Rd., Aztec, NM 87410

API NO. (assigned by OCD on New Wells)	30-025-31507
5. Indicate Type of Lease	STATE <input checked="" type="checkbox"/> FEE <input type="checkbox"/>
6. State Oil & Gas Lease No.	B-2052-3

APPLICATION FOR PERMIT TO DRILL, DEEPEN, OR PLUG BACK

1a. Type of Work:

DRILL RE-ENTER DEEPEN PLUG BACK

b. Type of Well:

OIL WELL GAS WELL OTHER SINGLE ZONE MULTIPLE ZONE

2. Name of Operator

AMERADA HESS CORPORATION

3. Address of Operator

ATTN: DRLG SVS. P.O. BOX 2040, TULSA, OK. 74102

4. Well Location

Unit Letter N : 1134 Feet From The SOUTH Line and 2630 Feet From The WEST Line

Section 19 Township 19S Range 37E NMPM LEA County

10. Proposed Depth 4080'
11. Formation GRAYBURG SAN ANDRES
12. Rotary or C.T. ROTARY

13. Elevations (Show whether DF, RT, GR, etc.) 3664'
14. Kind & Status Plug. Bond BLANKET CURRENT
15. Drilling Contractor GRACE
16. Approx. Date Work will start JANUARY 15.

PROPOSED CASING AND CEMENT PROGRAM

SIZE OF HOLE	SIZE OF CASING	WEIGHT PER FOOT	SETTING DEPTH	SACKS OF CEMENT	EST. TOP
12-1/4	9-5/8'	36	1300'	515	SURFACE
8-3/4	7"	20	4080'	485	SURFACE

SET 50' OF 14" CONDUCTOR PIPE. MOVE IN GRACE DRILLING AND SPUD 12-1/4" HOLE AND DRILL TO 1300'. SET AND CEMENT 9-5/8" CASING W/265 SX PACESETTER LITE (C) + 6.00% GEL (BENTONITE), + 2.00% CACL2 + 0.25 PPS. CELLO-SEAL + 95.00% WATER, SW-12.69 PPG., SY-1.84 CU.FT./SX. TAIL W/250 SX CLASS "C" + 2.00% CACL2 + 56.00% WATER, SW-14.79, SY-1.33 CU.FT./SX.

DRILL 8-3/4" HOLE TO 4080', SET AND CEMENT 7" @ 4080' W/335 SX PACESETTER LITE (C) + 6.00% GEL (BENTONITE) + 105% WATER, SW=12.37, SY=1.98 CU.FT./SX. TAIL W/150 SX CLASS "C" + 56% WATER, SW-14.79 PPG., SY-1.33 CU.FT./SX.

RIG DOWN ROTARY TOOLS & TURN WELL OVER TO PRODUCTION FOR COMPLETION.

IN ABOVE SPACE DESCRIBE PROPOSED PROGRAM: IF PROPOSAL IS TO DEEPEN OR PLUG BACK, GIVE DATA ON PRESENT PRODUCTIVE ZONE AND PROPOSED NEW PRODUCTIVE ZONE. GIVE BLOWOUT PREVENTER PROGRAM, IF ANY.

I hereby certify that the information above is true and complete to the best of my knowledge and belief.

SIGNATURE J. R. Wilson TITLE SUPERVISOR, DRLG ADMIN. SV DATE 12/20/91

TYPE OR PRINT NAME J. R. WILSON

TELEPHONE NO. 918 599 4226

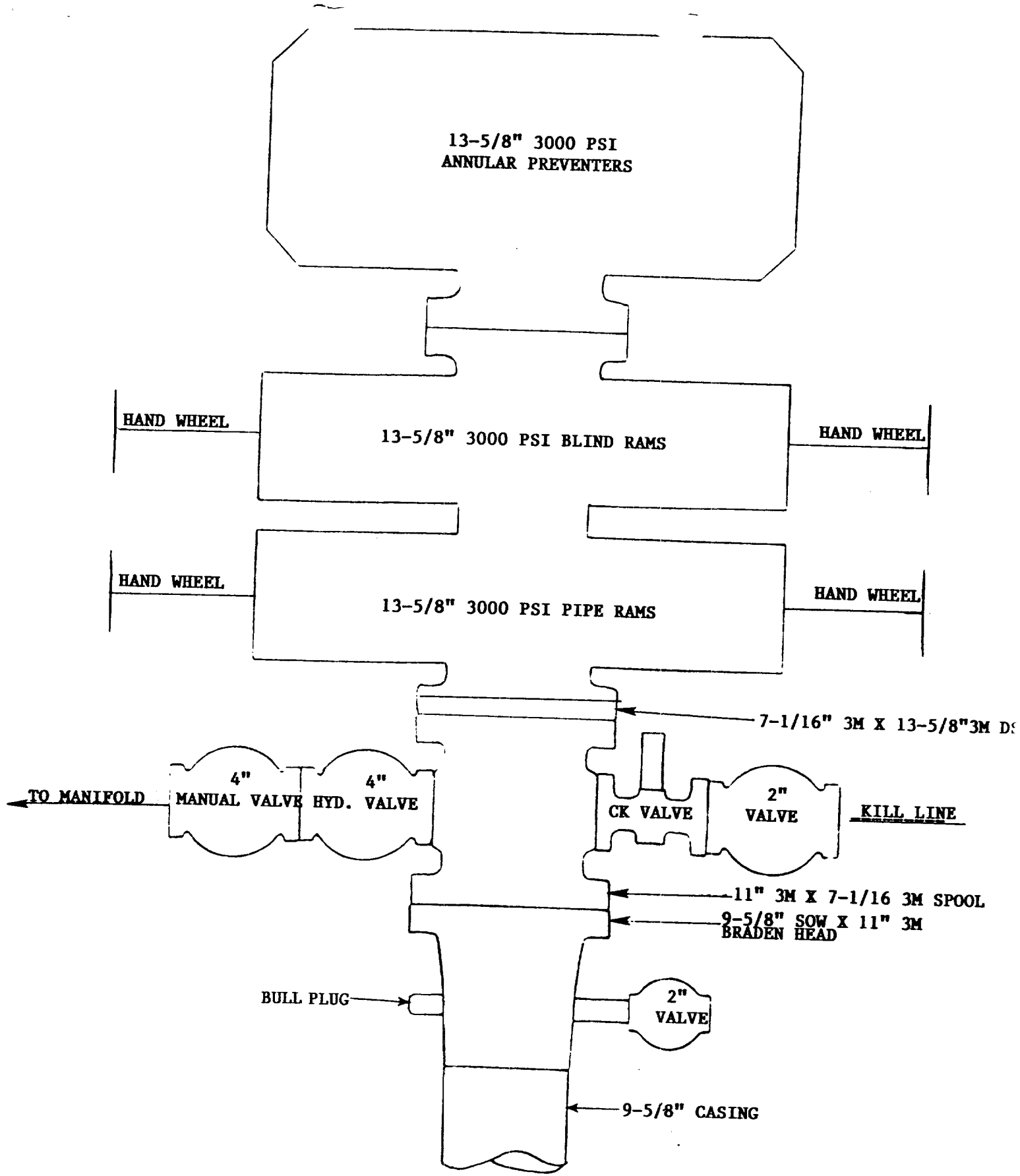
(This space for State Use)

APPROVED BY _____ TITLE _____ DATE _____

CONDITIONS OF APPROVAL, IF ANY:

M&L-3097

Permit Expires 6 Months From Approval Date Unless Drilling Underway.



NMGSA #5-30

MEXICO OIL CONSERVATION COMM.
WELL LOCATION AND ACREAGE DEDICATION PLAT

Form C-102
Supersedes C-120
Effective 1-4-83

All distances must be from the outer boundaries of the Section

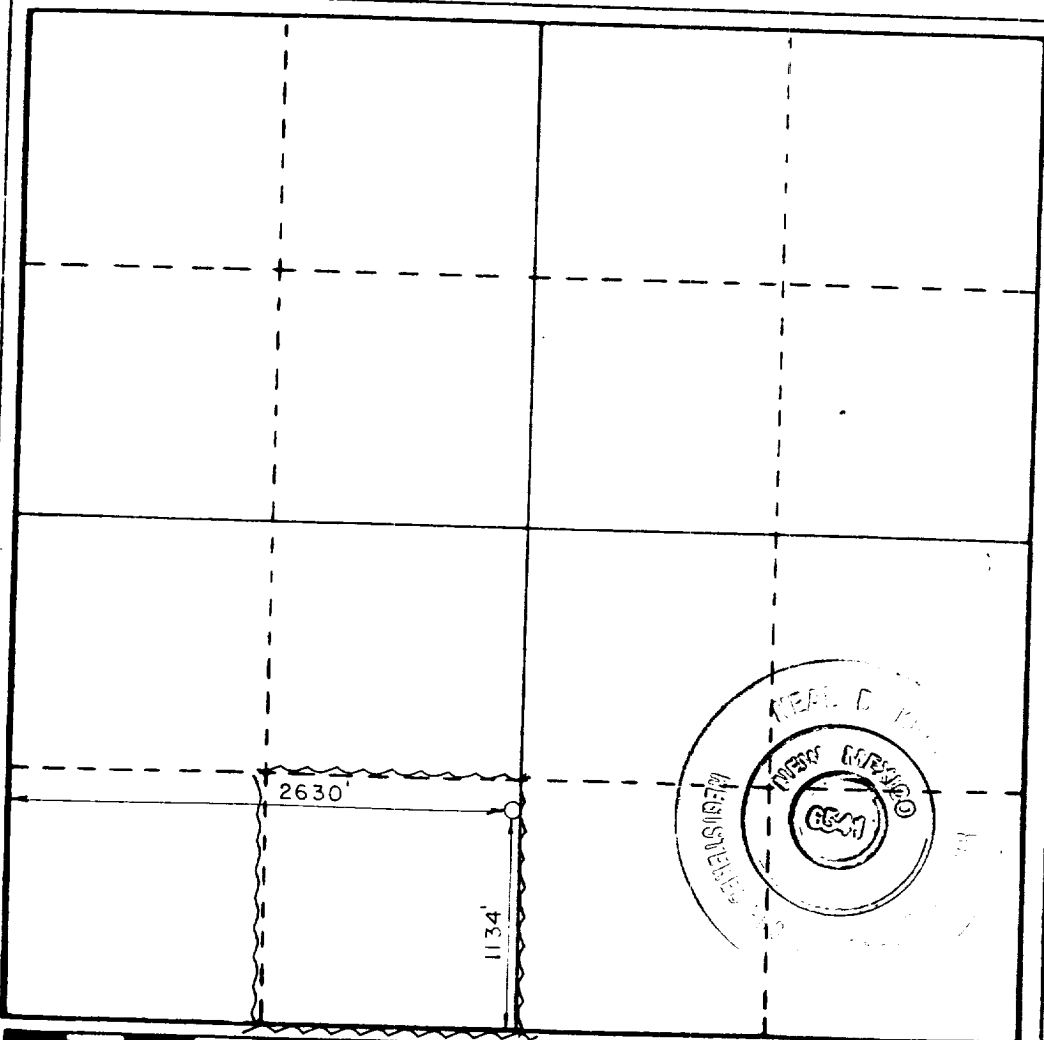
Operator AMERADA-HESS CORPORATION						Lease <i>N. Monument G/S/A Unit Production Blk 5</i>		Well No. 30
Unit Letter N	Section 19	Township 19S	Range 37E	County Lea				
Actual Footage Location of Well: 1134 feet from the South line and 2630 feet from the West line								
Ground Level Elev. 3664	Producing Formation GRAYBURG SAN ANDRES		Pool EUNICE MONUMENT G/S/A			Dedicated Acreage: 40 Acres		

1. Outline the acreage dedicated to the subject well by colored pencil or hachure marks on the plat below.
2. If more than one lease is dedicated to the well, outline each and identify the ownership thereof (both as to working interest and royalty).
3. If more than one lease of different ownership is dedicated to the well, have the interests of all owners been consolidated by communitization, unitization, force-pooling, etc?

Yes No If answer is "yes," type of consolidation UNITIZED ORDER #R-9494

If answer is "no," list the owners and tract descriptions which have actually been consolidated. (Use reverse side of this form if necessary.) UNITIZED ORDER #R-9494

No allowable will be assigned to the well until all interests have been consolidated (by communitization, unitization, forced-pooling, or otherwise) or until a non-standard unit, eliminating such interests, has been approved by the Commission.



CERTIFICATION

I hereby certify that the information contained herein is true and complete to the best of my knowledge and belief.

J. R. Wilson

Name
J. R. WILSON

Position
SUPERVISOR, DRLG ADMIN. SVS.

Company
AMERADA HESS CORPORATION

Date
12/20/91

I hereby certify that the well location shown on this plat was plotted from field notes of actual surveys made by me or under my supervision, and that the same is true and correct to the best of my knowledge and belief.

December 10, 1991

Date Surveyed

Registered Professional Engineer and or Land Surveyor

Neal D. King

Certificate No. R. L. S. 6541

