

Submit to appropriate
 District Office
 State Lease - 4 copies
 Fee Lease - 3 copies

State of New Mexico
 Energy, Minerals and Natural Resources Department

Form C 12
 Revised 1-89

OIL CONSERVATION DIVISION

P.O. Box 2088
 Santa Fe, New Mexico 87504-2088

DISTRICT I
 P.O. Box 1980, Hobbs, NM 88240

DISTRICT II
 P.O. Drawer DD, Artesia, NM 88210

DISTRICT III
 1000 Rio Brazos Rd., Axtec, NM 87410

WELL LOCATION AND ACREAGE DEDICATION PLAT

All Distances must be from the outer boundaries of the section

Operator EXXON COMPANY U.S.A.		Lease EUMONT GAS COM. 1		Well No. 3
Unit Letter N	Section 4	Township 20 SOUTH	Range 37 EAST NMPM	County LEA

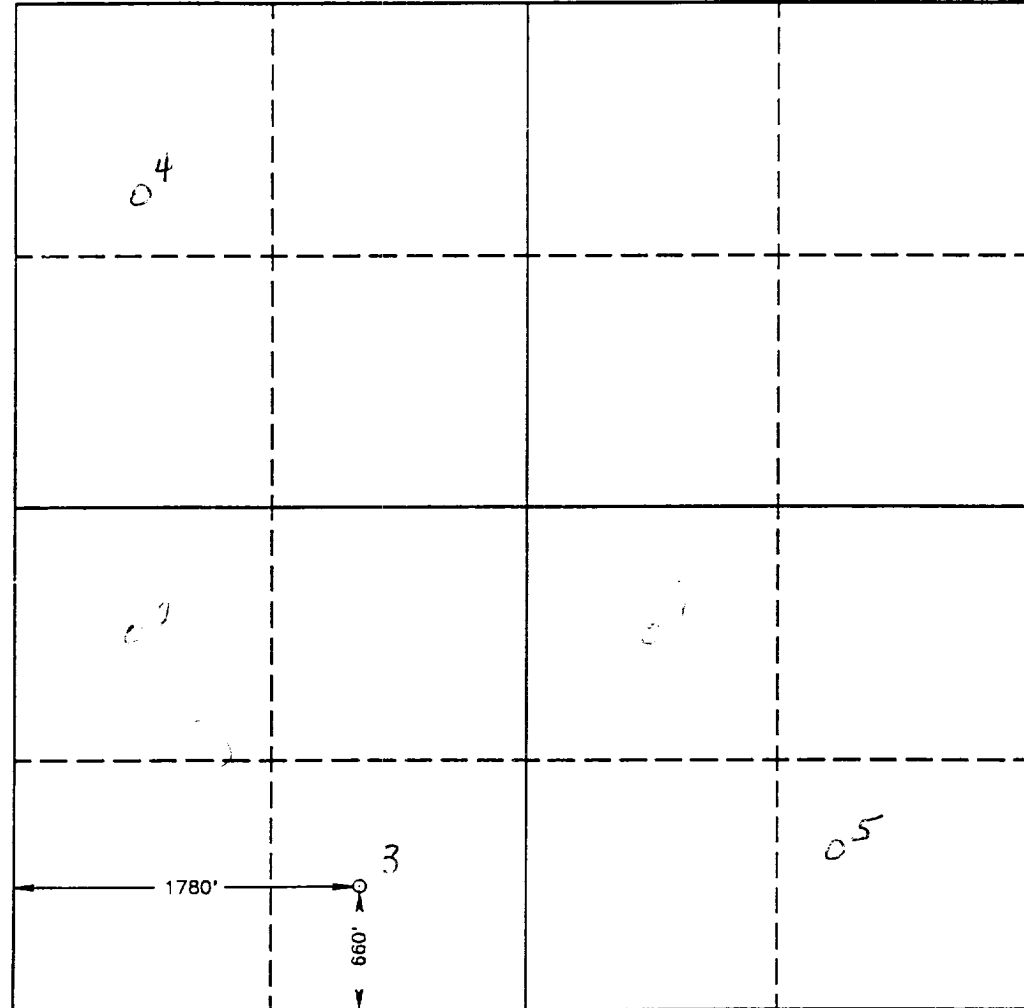
Actual Footage Location of Well:
 660 feet from the SOUTH line and 1780 feet from the WEST line

Ground Level Elev. 3557.2'	Producing Formation QUEEN	Pool EUMONT YATES 7 RVRS QN (PRO GAS)	Dedicated Acreage: 640 Acres
-------------------------------	------------------------------	--	---------------------------------

- Outline the acreage dedicated to the subject well by colored pencil or hachure marks on the plat below.
- If more than one lease is dedicated to the well, outline each and identify the ownership thereof (both as to working interest and royalty).
- If more than one lease of different ownership is dedicated to the well, have the interest of all owners been consolidated by communitization, unitization, force-pooling, etc.?
 - Yes No If answer is "yes" type of consolidation _____

If answer is "no" list of owners and tract descriptions which have actually been consolidated. (Use reverse side of this form necessary.)

No allowable will be assigned to the well unit all interests have been consolidated (by communitization, unitization, forced-pooling, otherwise) or until a non-standard unit, eliminating such interest, has been approved by the Division.



OPERATOR CERTIFICATION

I hereby certify that the information contained herein is true and complete to the best of my knowledge and belief.

Signature

Printed Name

Position

Company

Date

SURVEYOR CERTIFICATION

I hereby certify that the well location shown on this plat was plotted from field notes of actual surveys made by me or under my supervision, and that the same is true and correct to the best of my knowledge and belief.

Date Surveyed

AUGUST 6, 1992

Signature & Seal of Professional Surveyor

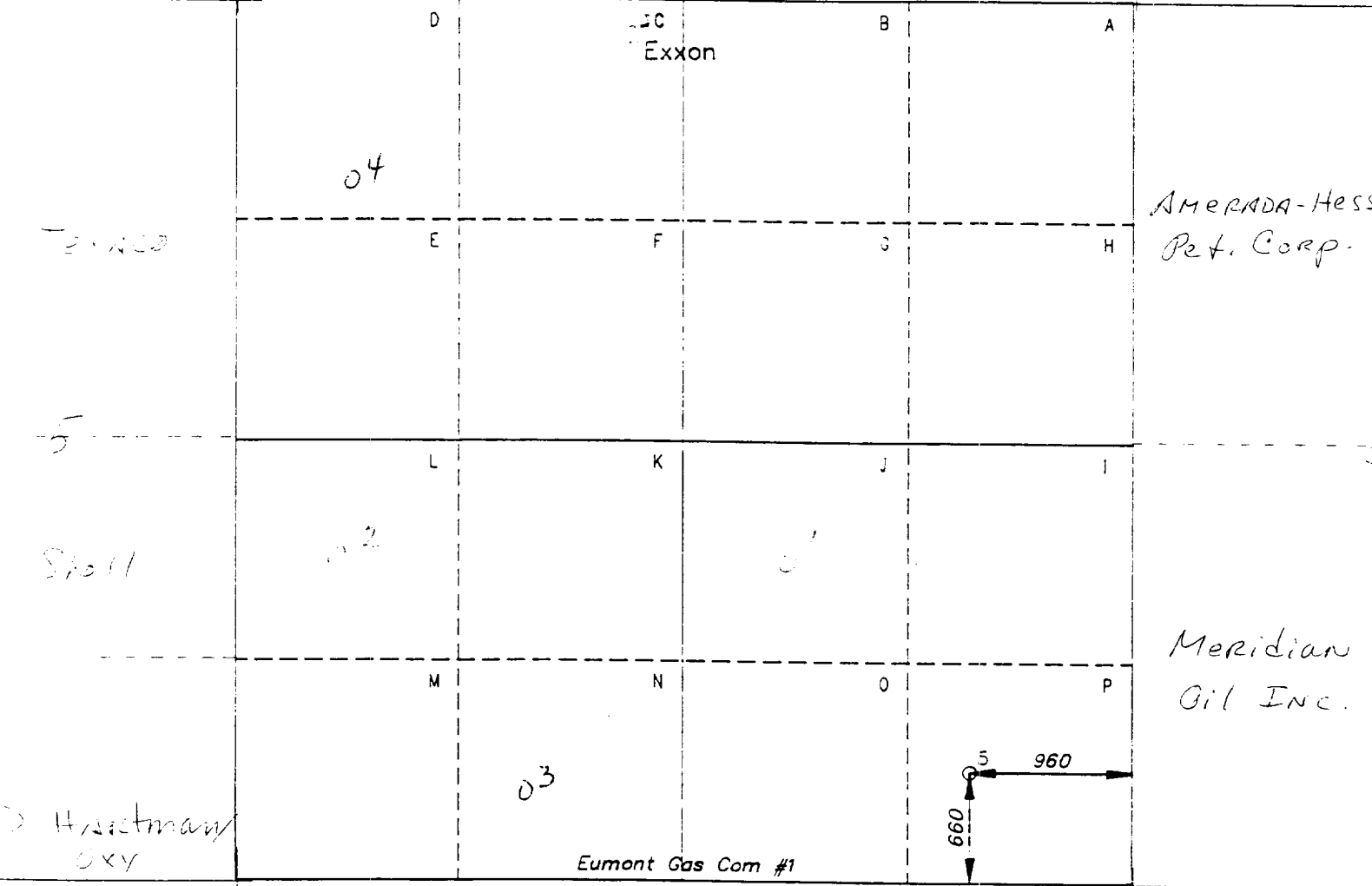
Professional Surveyor Seal for Ronald J. Eidson, State of New Mexico. The seal includes the text: "STATE OF NEW MEXICO", "PROFESSIONAL SURVEYOR", "RONALD J. EIDSON", "3239". A handwritten signature is over the seal. Below the seal, the text reads: "Certificate No. JOHN W. WEST, 678 RONALD J. EIDSON, 3239 GARY L. JONES, 7977". A date stamp "AUG 11 1992" is also visible.

A10680

TEXACO

Amerada-Hess Pet. Corp.

Amerada-Hess
Pet. Corp.



Amerada-Hess Pet. Corp.

TEXACO

D. Hartman
Oxy