

Submit to Appropriate
District Office
State Leases - 6 copies
Fee Leases - 5 copies

State of New Mexico
I, Minerals and Natural Resources Department

Form C-104
Revised 1-1-89

DISTRICT I
P.O. Box 1980, Hobbs, NM 88240

DISTRICT II
P.O. Drawer DD, Artesia, NM 88210

DISTRICT III
1000 Rio Rancho Rd., Altec, NM 87410

OIL CONSERVATION DIVISION
P.O. Box 2088
Santa Fe, New Mexico 87504-2088

API NO. (assigned by OCD on New Wells)

30-025-32310

5. Indicate Type of Lease

STATE ☒ FEE ☐

6. State Oil & Gas Lease No.

LG 2750

APPLICATION FOR PERMIT TO DRILL, DEEPEN, OR PLUG BACK

1a. Type of Work:

DRILL ☒ RE-ENTER ☐ DEEPEN ☐ PLUG BACK ☐

b. Type of Well:

OIL WELL ☒ GAS WELL ☐ OTHER ☐ SINGLE ZONE ☐ MULTIPLE ZONE ☐

7. Lease Name or Unit Agreement Name

Mobil Lea State

2. Name of Operator

ARMSTRONG ENERGY CORPORATION

8. Well No.

4

3. Address of Operator

P.O. Box 1973, Roswell, New Mexico 88202

9. Pool name or Wildcat

Lea Delaware, Northeast

4. Well Location

Unit Letter N : 1155 Feet From The South Line and 1770 Feet From The West Line

Section 2 Township 20S Range 34E NMMPM Lea County

10. Proposed Depth

6300'

11. Formation

Delaware

12. Rotary or C.T.

Rotary

13. Elevations (Show whether DF, RT, GR, etc.)

3667.9 GR

14. Kind & Status Plug Bond

Blanket

15. Drilling Contractor

L&M Drilling

16. Approx. Date Work will start

12-03-93

17.

PROPOSED CASING AND CEMENT PROGRAM

SIZE OF HOLE	SIZE OF CASING	WEIGHT PER FOOT	SETTING DEPTH	SACKS OF CEMENT	EST. TOP
14 3/4"	9 5/8"	36#	1730' to Top Ann.	1200	Circ.
8 3/4"	5 1/2"	15.5#	6300'	1400	Circ.
				DV tool @ 5000'	

Propose to drill the Mobil Lea State #4 well to test the Delaware formation. 9 5/8" casing will be run for surface casing. If lost circulation were to occur later, this allows us the option to run 7" intermediate casing and then drill to accommodate a 4 1/2" production string.

*Included with this application is Order No. R-10015 granting approval for this unorthodox location.

IN ABOVE SPACE DESCRIBE PROPOSED PROGRAM: IF PROPOSAL IS TO DEEPEN OR PLUG BACK, GIVE DATA ON PRESENT PRODUCTIVE ZONE AND PROPOSED NEW PRODUCTIVE ZONE. GIVE BLOWOUT PREVENTER PROGRAM, IF ANY.

I hereby certify that the information above is true and complete to the best of my knowledge and belief.

SIGNATURE

Thomas K. Scroggin

TITLE

Operations Supervisor

DATE 11-15-93

TYPE OR PRINT NAME

Thomas K. Scroggin

TELEPHONE NO. 623-8726

(This space for State Use)

ORIGINAL SIGNED BY JERRY SEXTON
DISTRICT I SUPERVISOR

APPROVED BY

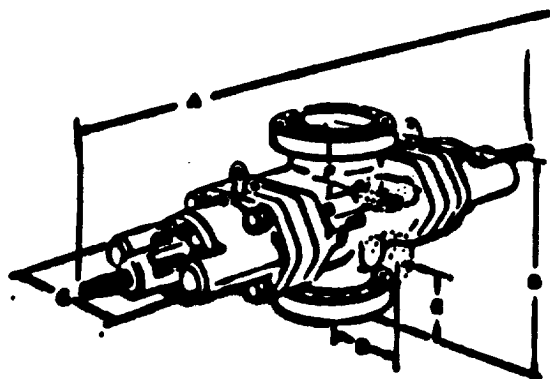
TITLE

DATE NOV 19 1993

CONDITIONS OF APPROVAL, IF ANY:

Permit Expires 6 Months From Approval
Date Unless Drilling Underway.

U BLOWOUT PREVENTER ENGINEERING DATA



Single Open Face Flanged U Blowout Preventer

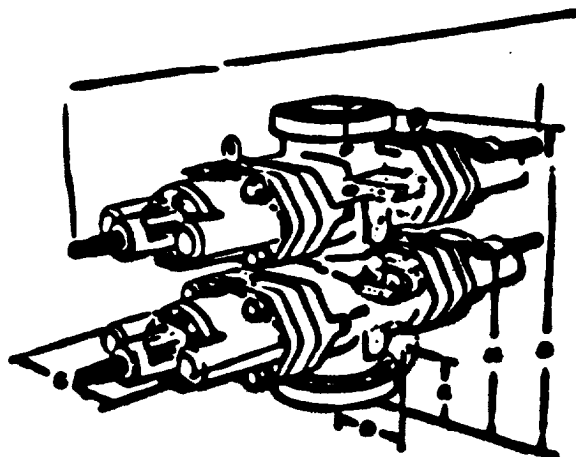
Side Outlets to 4" size (7-1/16" on 26-3/4" preventers) can be provided beneath each set of rams, on either or both sides of U preventers. Side outlet flanges are open face and have the same pressure rating as the vertical run flanges. Valve removal preparations can be provided. To obtain a quotation, the number and size of outlets should be specified.

Flanges conform to API Standard 6A. Type 6BX flanges are standard for 10,000 psi, 15,000 psi, and 20,000 psi working pressures and for 5000 psi working pressures for 13-5/8" and larger bore preventers.

Although most preventers have open face flanges or Cameron clamp hubs, preventers with stubbed flanges can be furnished.

Sizes and Dimensions are in inches. The over-all length "A" given in the tables does not include the optional wedgelocks. No spacers between rams are included in the table of dimensions of double ram models. Preventers with spacers to clear tool joints can be obtained on special order. For information on preventers with spacers, or sizes not listed, consult your Cameron representative.

Hydraulic Control Connections to operate rams and bonnets are 1" NPT. There are two connections for each set of rams. Hydraulic ram lock connections are 1/2" NPT.



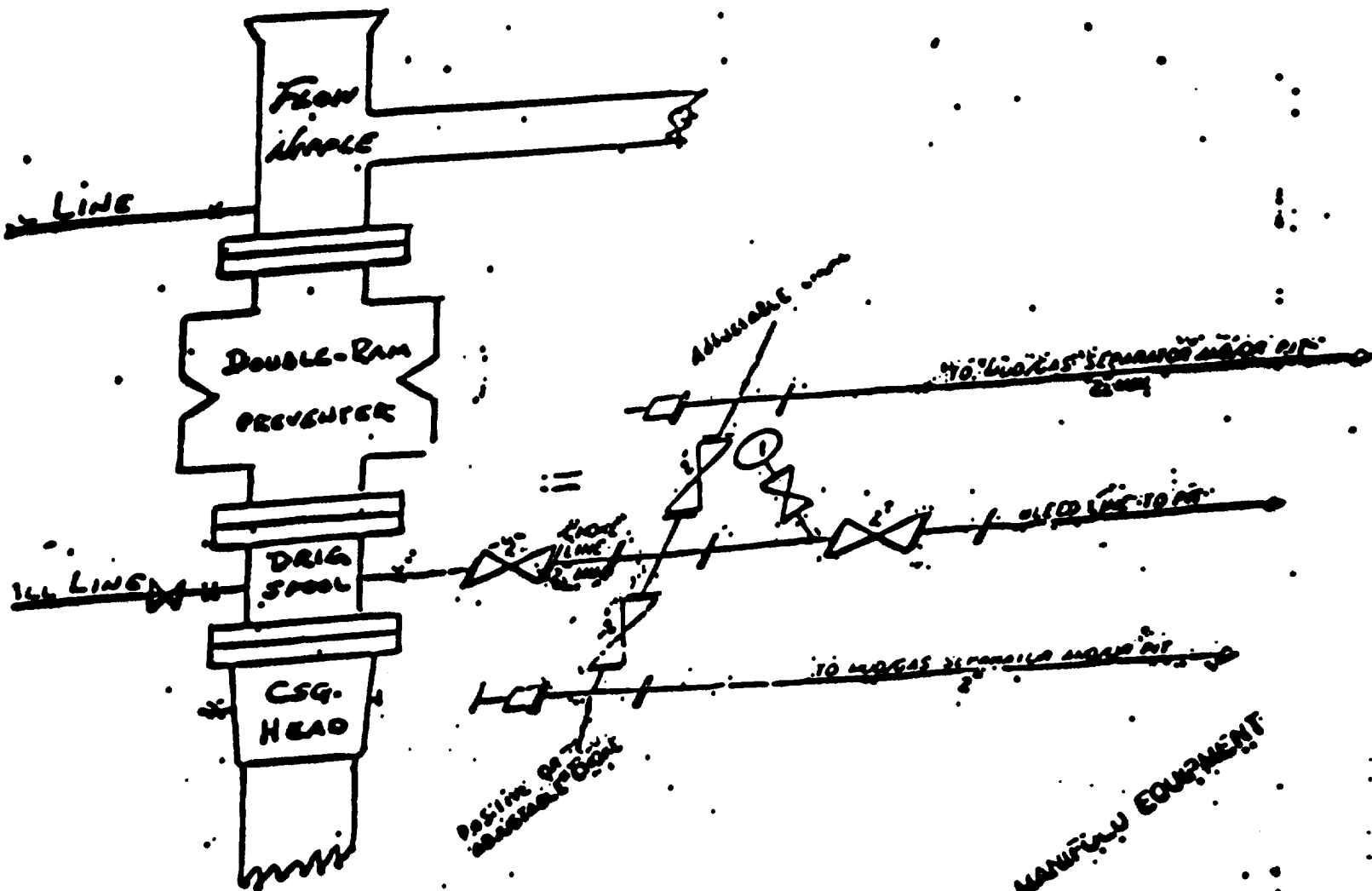
Double Open Face Flanged U Blowout Preventer

Engineering Data Designations. See Charts on Following Page

- A-1 Over-all length, bonnets closed, locking screws locked
- A-2 Over-all length, ram change, bonnets opened, locking screws unlocked
- B-1 Over-all height flanged
- B-2 As above, with Cameron clamp hubs
- C Over-all width without side outlets (max. width)
- D Centerline of preventer to outlet flange or hub face. Distance is variable.
- E-1 Centerline of side outlet (outlet below lower rams in double model) to bottom flange face
- E-2 As above, to bottom hub face
- F-1 Top of upper ram to top flange face
- F-2 As above, to top hub face
- G Ram height
- H-1 Centerline of side outlet between rams to bottom flange face
- H-2 As above, to bottom hub face
- J Top of lower ram to bottom of upper ram

B U P & CHOKE MANIFOLD

10"/900 Cameron SS Space Saver
3000# Working Pressure
3000# Working Pressure Choke Manifold



Form C-102
Revised 1-1-89

All Distances must be from the outer boundaries of the section

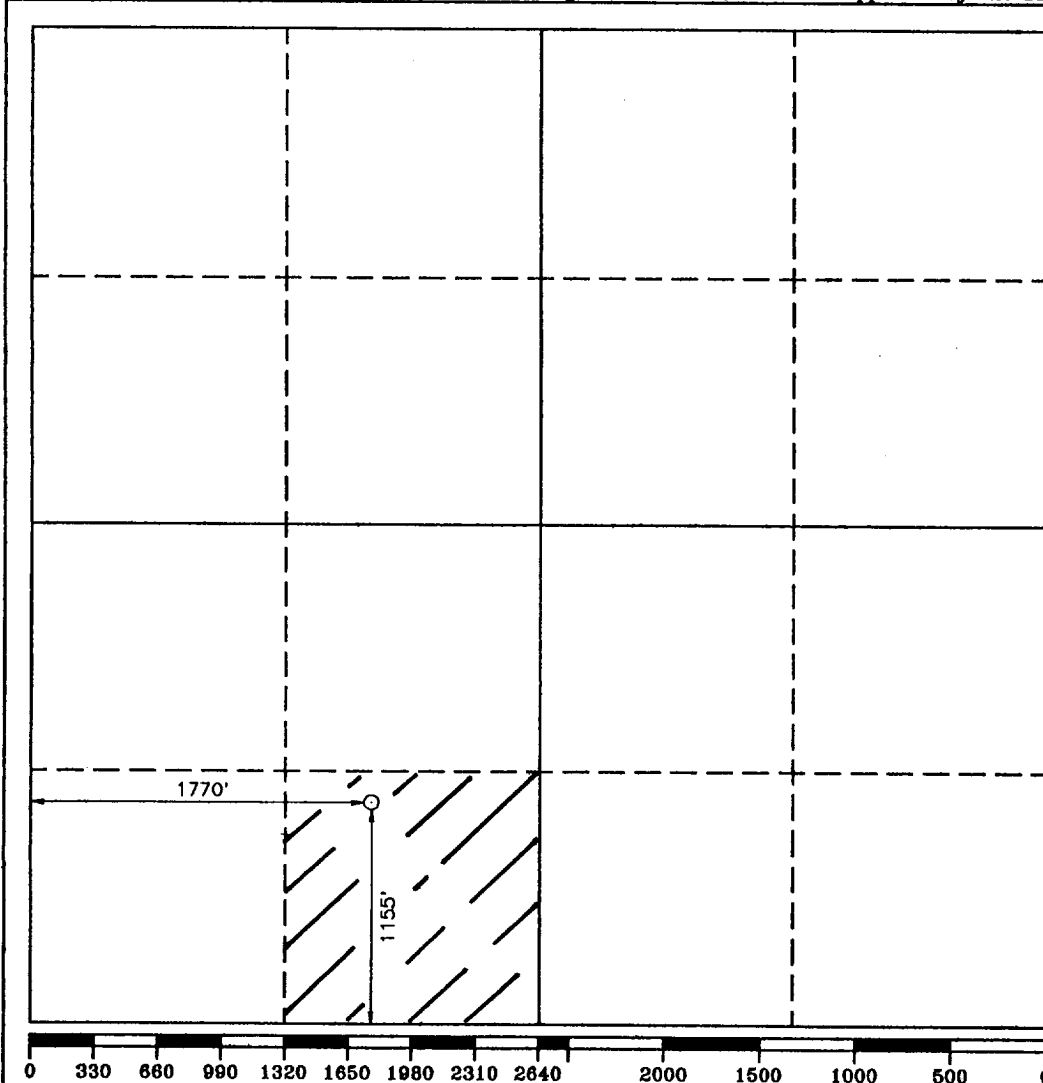
Operator ARMSTRONG ENERGY CORP.			Lease MOBIL LEA STATE		Well No. 4
Unit Letter N	Section 2	Township 20 SOUTH	Range 34 EAST NMPM	County LEA	
Actual Footage Location of Well:					
1155 feet from the SOUTH line and 1770 feet from the WEST line					
Ground Level Elev. 3667.9'	Producing Formation Delaware		Pool Lea Delaware N.E.		Dedicated Acreage: 40 Acres

1. Outline the acreage dedicated to the subject well by colored pencil or hatchure marks on the plat below.
2. If more than one lease is dedicated to the well, outline each and identify the ownership thereof (both as to working interest and royalty).
3. If more than one lease of different ownership is dedicated to the well, have the interest of all owners been consolidated by communitization, unitization, force-pooling, etc.?

☐ Yes ☐ No If answer is "yes" type of consolidation

If answer is "no" list of owners and tract descriptions which have actually been consolidated. (Use reverse side of this form necessary.)

No allowable will be assigned to the well unit all interests have been consolidated (by communitization, unitization, forced-pooling, otherwise) or until a non-standard unit, eliminating such interest, has been approved by the Division.



OPERATOR CERTIFICATION

I hereby certify the the information
contained herein is true and complete to the
best of my knowledge and belief.

Signature

Printed Name _____

Thomas K. Scroggin

Position

Operations Supervisor

Company	
----------------	--

Armstrong Energy Corp.

Date _____

November 15, 1993

SURVEYOR CERTIFICATION

I hereby certify that the well location shown on this plat was plotted from field notes of actual surveys made by me or under my supervision, and that the same is true and correct to the best of my knowledge and belief.

Date Surveyed

NOVEMBER 11, 1993

Signature & Seal of
Professional Surveyor



Certificate No. _____ JOHN W. WEST
RONALD J. EDSON
PROFESSIONAL LAND SURVEYOR

93-11-2245