

DISTRICT I

P.O. Box 1980, Hobbs, NM 88241-1980

DISTRICT II

P.O. Box Drawer DD, Artesia, NM 88211-0719

DISTRICT III

1000 Rio Brazos Rd., Aztec, NM 87410

DISTRICT IV

P.O. Box 2088, Santa Fe, NM 87504-2088

State of New Mexico

Energy, Minerals and Natural Resources Department

## OIL CONSERVATION DIVISION

P.O. Box 2088

Santa Fe, New Mexico 87504-2088

Form C-101

Revised February 10, 1994

Instructions on back  
Submit to Appropriate District Office

State Lease - 6 Copies

Fee Lease - 5 Copies

☐ AMENDED REPORT

## APPLICATION FOR PERMIT TO DRILL, RE-ENTER, DEEPEN, PLUGBACK, OR ADD A ZONE

<sup>1</sup> Operator Name and Address TEXACO EXPLORATION & PRODUCTION INC. 205 E. Bender, HOBBS, NM 88240		<sup>2</sup> OGRID Number 022351
<sup>4</sup> Property Code 11135	<sup>5</sup> Property Name WILLIAM WEIR	<sup>3</sup> API Number 30 025 32624
		<sup>6</sup> Well No. 6

<sup>7</sup> Surface Location									
UI or lot no.	Section	Township	Range	Lot.Idn	Feet From The	North/South Line	Feet From The	East/West Line	County
N	23	19-S	36-E		425	SOUTH	1830	WEST	LEA

<sup>8</sup> Proposed Bottom Hole Location If Different From Surface									
UI or lot no.	Section	Township	Range	Lot.Idn	Feet From The	North/South Line	Feet From The	East/West Line	County
P	23	19-S	36-E		660	SOUTH	330	EAST	LEA
<sup>9</sup> Proposed Pool 1 ABO					<sup>10</sup> Proposed Pool 2				

<sup>11</sup> Work Type Code E	<sup>12</sup> WellType Code O	<sup>13</sup> Rotary or C.T. R	<sup>14</sup> Lease Type Code S	<sup>15</sup> Ground Level Elevation 3687'
<sup>16</sup> Multiple No	<sup>17</sup> Proposed Depth 7450'	<sup>18</sup> Formation ABO	<sup>19</sup> Contractor DAWSON	<sup>20</sup> Spud Date 2/20/98

<sup>21</sup> Proposed Casing and Cement Program					
SIZE OF HOLE	SIZE OF CASING	WEIGHT PER FOOT	SETTING DEPTH	SACKS OF CEMENT	EST. TOP
14 3/4	9 5/8	24#	1350'	200	SURFACE
7 7/8	5 1/2	15.5#	7850'	1015	SURFACE

<sup>22</sup> Describe the proposed program. If this application is to DEEPEN or PLUG BACK give the data on the present productive zone and proposed new productive zone. Describe the blowout prevention program, if any. Use additional sheets if necessary.

IT IS PROPOSED TO DRILL A 3125' HORIZONTAL LATERAL IN THE ABO FORMATION.  
SET A CIBP @ 7322' (CASING COLLARS @ 7298' & 7335') SET A BOTTOM SET RETRIEVABLE 3 DEGREE WHIPSTOCK ON TOP OF THE CIBP (TOP OF WINDOW 7314', BOTTOM OF WINDOW 7321').

DRILL A SHORT RADIUS CURVE USING AN 4 3/4" BIT TO A MEASURED DEPTH OF 7509' (TVD @ 7450') THE FINAL ANGLE WILL BE 84.33 DEGREES FROM VERTICAL.

DRILL 3125' HORIZONTAL SECTION

ACID FRAC THE HORIZONTAL PORTION OF THE WELL. PLACE WELL ON PUMP.

Permit Expires 1 Year From Approval  
Date Unless Drilling Underway

Directional

<sup>23</sup> I hereby certify that the rules and regulations of the Oil Conservation Division have been complied with and that the information given above is true and complete to the best of my knowledge and belief.

Signature *J. Denise Leake*

Printed Name J. Denise Leake

Title Engineering Assistant

Date 2/10/98

Telephone 397-0405

## OIL CONSERVATION DIVISION

Approved By: ORIGINAL SIGNED BY CHRIS WILLIAMS  
DISTRICT I SUPERVISOR

Title:

Approval Date: FEB 10 1998

Expiration Date:

Conditions of Approval:  
Attached ☐

DISTRICT I

P.O. Box 1980, Hobbs, NM 88241-1980

DISTRICT II

P.O. Box Drawer DD, Artesia, NM 88211-0719

DISTRICT III

1000 Rio Brazos Rd., Aztec, NM 87410

DISTRICT IV

P.O. Box 2088, Santa Fe, NM 87504-2088

## State of New Mexico

Energy, Minerals and Natural Resources Department

## OIL CONSERVATION DIVISION

P.O. Box 2088

Santa Fe, New Mexico 87504-2088

Form C-102

Revised February 10, 1994

Instructions on back

Submit to Appropriate District Office

State Lease - 4 Copies

Fee Lease - 3 Copies

☐ AMENDED REPORT

## WELL LOCATION AND ACREAGE DEDICATION PLAT

<sup>1</sup> API Number 30 025 32624		<sup>2</sup> Pool Code 46970		<sup>3</sup> Pool Name MONUMENT ABO	
<sup>4</sup> Property Code 11135		<sup>5</sup> Property Name WILLIAM WEIR			<sup>6</sup> Well No. 6
<sup>7</sup> OGRID Number 022351		<sup>8</sup> Operator Name TEXACO EXPLORATION & PRODUCTION INC.			<sup>9</sup> Elevation 3687'

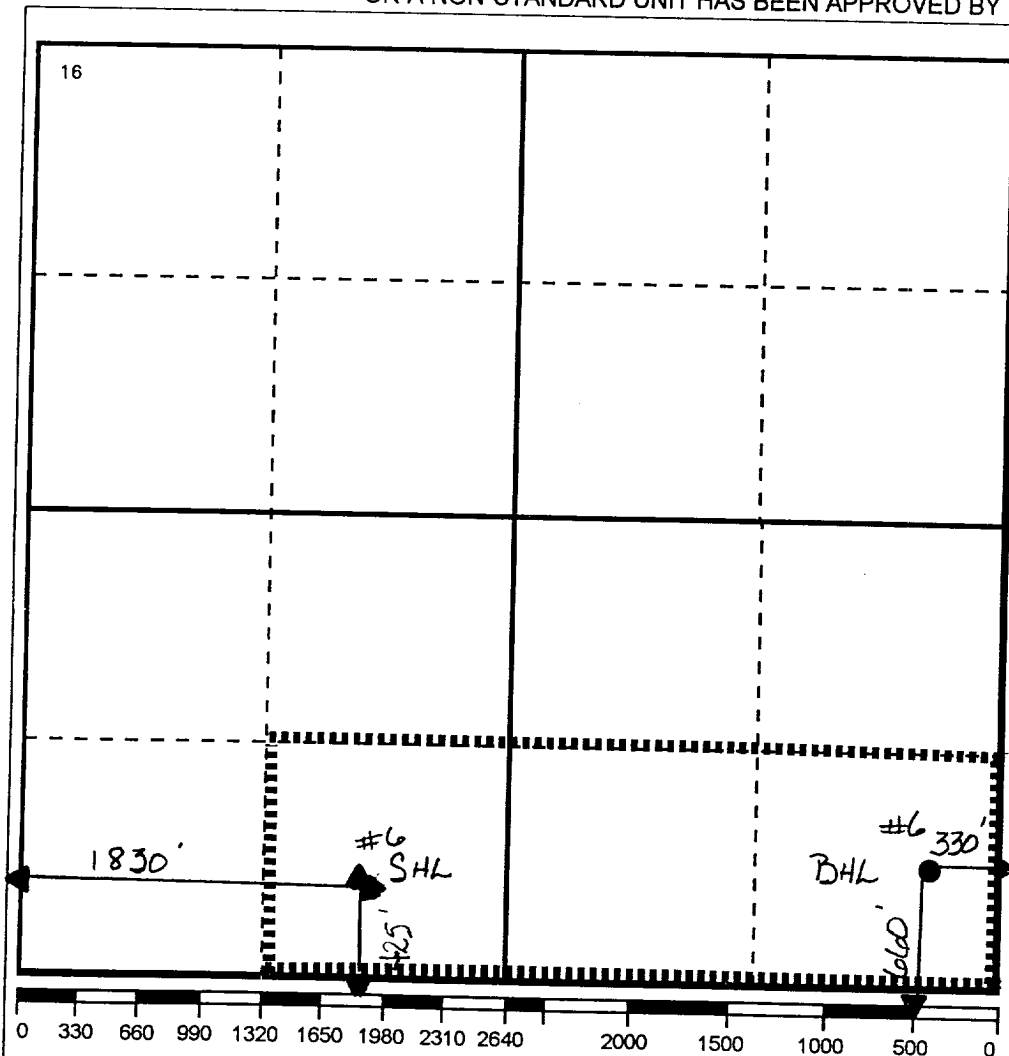
<sup>10</sup> Surface Location

UI or lot no. N	Section 23	Township 19-S	Range 36-E	Lot.Idn	Feet From The 425	North/South Line SOUTH	Feet From The 1830	East/West Line WEST	County LEA
--------------------	---------------	------------------	---------------	---------	----------------------	---------------------------	-----------------------	------------------------	---------------

<sup>11</sup> Bottom Hole Location If Different From Surface

UI or lot no. P	Section 23	Township 19-S	Range 36-E	Lot.Idn	Feet From The 660	North/South Line SOUTH	Feet From The 330	East/West Line EAST	County LEA
<sup>12</sup> Dedicated Acres 120		<sup>13</sup> Joint or Infill No		<sup>14</sup> Consolidation Code		<sup>15</sup> Order No.			

NO ALLOWABLE WILL BE ASSIGNED TO THIS COMPLETION UNTIL ALL INTERESTS HAVE BEEN CONSOLIDATED  
OR A NON-STANDARD UNIT HAS BEEN APPROVED BY THE DIVISION

<sup>17</sup> OPERATOR CERTIFICATION

I hereby certify that the information contained herein is true and complete to the best of my knowledge and belief

Signature

Printed Name

J. Denise Leake

Position

Engineering Assistant

Date

2/10/98

<sup>18</sup> SURVEYOR CERTIFICATION

I hereby certify that the well location shown on this plat was plotted from field notes of actual surveys made by me or under my supervision, and that the same is true and correct to the best of my knowledge and belief.

Date Surveyed

Signature & Seal of  
Professional Surveyor

Certificate No.