

District I
 PO Box 1980, Hobbs, NM 88241-1980
 District II
 PO Drawer DD, Artesia, NM 88211-0719
 District III
 1000 Rio Brazos Rd., Aztec, NM 87410
 District IV
 PO Box 2088, Santa Fe, NM 87504-2088

State of New Mexico
 Energy, Minerals & Natural Resources Department

OIL CONSERVATION DIVISION
 PO Box 2088
 Santa Fe, NM 87504-2088

Form C-102
 Revised February 21, 1994
 Instructions on back
 Submit to Appropriate District Office
 State Lease - 4 Copies
 Fee Lease - 3 Copies

AMENDED REPORT

WELL LOCATION AND ACREAGE DEDICATION PLAT

1 API Number 30-025-32694		2 Pool Code		3 Pool Name Wildcat (Delaware)	
4 Property Code 18385		5 Property Name SINAGUA "18" FEDERAL COM.			6 Well Number 2
7 OGRID No. 020305		8 Operator Name SANTA FE SNYDER CORPORATION			9 Elevation 3626.0

10 Surface Location

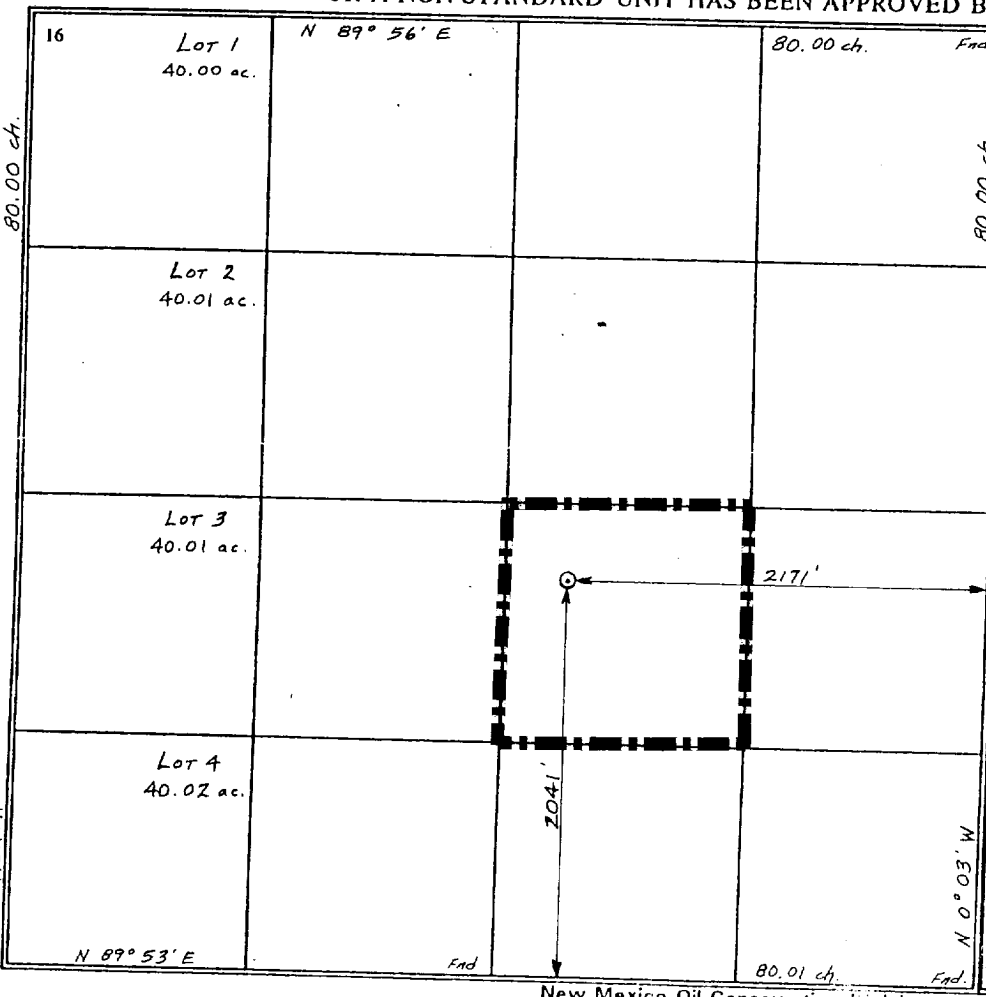
UL or lot no.	Section	Township	Range	Lot Idn	Feet from the	North/South line	Feet from the	East/West line	County
J	18	20 S	34 E		2041	SOUTH	2171	EAST	LEA

11 Bottom Hole Location If Different From Surface

UL or lot no.	Section	Township	Range	Lot Idn	Feet from the	North/South line	Feet from the	East/West line	County

12 Dedicated Acres 40	13 Joint or Infill	14 Consolidation Code	15 Order No.
--------------------------	--------------------	-----------------------	--------------

NO ALLOWABLE WILL BE ASSIGNED TO THIS COMPLETION UNTIL ALL INTERESTS HAVE BEEN CONSOLIDATED OR A NON-STANDARD UNIT HAS BEEN APPROVED BY THE DIVISION



17 OPERATOR CERTIFICATION

I hereby certify that the information contained herein is true and complete to the best of my knowledge and belief

Carolyn Larson
 Signature

Carolyn Larson
 Printed Name

Regulatory Specialist
 Title

July 19, 2000
 Date

18 SURVEYOR CERTIFICATION

I hereby certify that the well location shown on this plat was plotted from field notes of actual surveys made by me or under my supervision, and that the same is true and correct to the best of my belief.

7-21-94
 Date of Survey

Signature and Seal of Professional Surveyor

William E. Mahnke II
 WILLIAM E. MAHNKE II
 REGISTERED PROFESSIONAL LAND SURVEYOR
 #8466

Certificate Number

UNITED STATES
DEPARTMENT OF THE INTERIOR

BUREAU OF LAND MANAGEMENT

(See other in-
structions on
reverse side)

FORM APPROVED
OMB NO. 1004-0137
Expires: February 28, 1995

5. LEASE DESIGNATION AND SERIAL NO.
LC-029512-C

WELL COMPLETION OR RECOMPLETION REPORT AND LOG*

1a. TYPE OF WELL: OIL WELL GAS WELL DRY Other _____

b. TYPE OF COMPLETION: NEW WELL WORK OVER DEEP-EN PLUG BACK DIFF. RESVR Other _____

6. IF INDIAN, ALLOTTEE OR TRIBE NAME

7. UNIT AGREEMENT NAME

2. NAME OF OPERATOR
Santa Fe Snyder Corporation

8. FARM OR LEASE NAME, WELL NO.
Sinagua 18
Fed Com #2

3. ADDRESS AND TELEPHONE NO.
550 W. Texas, Suite 1330, Midland, TX 79701 915/686-6612

9. API WELL NO.
30-025-32694

4. LOCATION OF WELL (Report location clearly and in accordance with any State requirements)*

At surface
(J), 2041' FSL & 2171' FEL

At top prod. interval reported below

At total depth
(P), 1300' FSL & 1300' FEL

10. FIELD AND POOL, OR WILDCAT
Wildcat (*Devonian*)

11. SEC., T., R., M., OR BLK. AND SURVEY OR AREA
Sec. 18, T-20S, R-34E

12. COUNTY OR PARISH
Lea Co.,

13. STATE
NM

14. PERMIT NO. DATE ISSUED

15. DATE SPUNDED
10/15/94

16. DATE T.D. REACHED
12/12/94

17. DATE COMPL. (Ready to prod.)
Recompl. 5-23-00

18. ELEVATIONS (DF, RKB, RT, GR, ETC.)*
3626' GL

19. ELEV. CASINGHEAD

20. TOTAL DEPTH, MD & TVD
13,925'

21. PLUG, BACK T.D., MD & TVD
9450'

22. IF MULTIPLE COMPL., HOW MANY*
N/A

23. INTERVALS DRILLED BY

ROTARY TOOLS
All

CABLE TOOLS
N/A

24. PRODUCING INTERVAL(S), OF THIS COMPLETION - TOP, BOTTOM, NAME (MD AND TVD)*
5670 - 7786' (*Delaware*)
(*Devonian*)

25. WAS DIRECTIONAL SURVEY MADE
Yes

26. TYPE ELECTRIC AND OTHER LOGS RUN
CNL/LDT; DLL/MSFL

27. WAS WELL CORED
No

28. CASING RECORD (Report all strings set in well)

CASING SIZE/GRADE	WEIGHT, LB./FT.	DEPTH SET (MD)	HOLE SIZE	TOP OF CEMENT, CEMENTING RECORD	AMOUNT PULLED
20" H-40 BT&C	94.0#	468'	26"	500 Lite & 200 "C" (Surf)	None
13-3/8" K-55	68.0#	3265'	17-1/2"	2400 Lite & 250 "C" (Surf)	None
8-5/8" K-55&J55	32.0#	5140'	12-1/4"	600 Lite & 400 "C"	None
5-1/2" N-80	17.0#	13,925'	7-7/8"	1800 sx C1 "H"	None

29. LINER RECORD

SIZE	TOP (MD)	BOTTOM (MD)	SACKS CEMENT*	SCREEN (MD)
N/A				

30. TUBING RECORD

SIZE	DEPTH SET (MD)	PACKER SET (MD)
2-7/8"	5706'	

31. PERFORATION RECORD (Interval, size and number)

13,307-857' (Plugged) CIBP @ 12955' W/ 35' cmt

12,611-12,617' (Plugged) CIBP @ 12550' W/ 35' cmt

9462'-9506' (Plugged) CIBP @ 9450' W/ 20' cmt.

5670 - 7786'

32. ACID, SHOT, FRACTURE, CEMENT SQUEEZE, ETC.

DEPTH INTERVAL (MD)	AMOUNT AND KIND OF MATERIAL USED
5670 - 7786	Acid W/4650 gal 15% acid & 161 BS Frac W/ 17,388 gal gel W/47,000# 16/30 Ottawa & 27,100# CR-2000 16/30 Sand.

33.* PRODUCTION

DATE FIRST PRODUCTION
5/27/00

PRODUCTION METHOD (Flowing, gas lift, pumping - size and type of pump)
Pumping

WELL STATUS (Producing or shut-in)
Producing

DATE OF TEST	HOURS TESTED	CHOKE SIZE	PROD'N. FOR TEST PERIOD	OIL - BBL.	GAS - MCF.	WATER - BBL.	GAS - OIL RATIO
6/7/00	24	N/A		11	0	164	N/A
FLOW. TUBING PRESS.	CASING PRESSURE	CALCULATED 24-HOUR RATE	OIL - BBL.	GAS - MCF.	WATER - BBL.	OIL GRAVITY - API (CORR.)	
150	0		11	0	164	41.04	

34. DISPOSITION OF GAS (Sold, used for fuel, vented, etc.)

35. LIST OF ATTACHMENTS
C-104, 3160-5

36. I hereby certify that the foregoing and attached information is complete and correct as determined from all available records

SIGNED *Rick Headley* TITLE Regulatory Specialist DATE 7-7-00

*(See Instructions and Spaces for Additional Data on Reverse Side)

RECEIVED
JUL 1 2 11 PM
1111
1111

1111
1111
1111