

DISTRICT I
P.O. Box 1980, Hobbs, NM 88241-1980
DISTRICT II
P.O. Box Drawer 10D, Artesia, NM 88211-0719
DISTRICT III
1000 Rio Brazos Ltd., Aztec, NM 87410
DISTRICT IV
P.O. Box 2088, Santa Fe, NM 87504-2088

State of New Mexico
Energy, Minerals and Natural Resources Department

Form C-101
Revised February 10, 1994
Instructions on back
Submit to Appropriate District Office
State Lease - 6 Copies
Fee Lease - 5 Copies

OIL CONSERVATION DIVISION

P.O. Box 2088
Santa Fe, New Mexico 87504-2088

AMENDED REPORT

APPLICATION FOR PERMIT TO DRILL, RE-ENTER, DEEPEN, PLUGBACK, OR ADD A ZONE

¹ Operator Name and Address TEXACO EXPLORATION & PRODUCTION INC. P.O. Box 3109, Midland Texas 79702		² OGRID Number 022351
		³ API Number 37-225-32846
⁴ Property Code 1127	⁵ Property Name L. VAN ETTEN	⁶ Well No. 17

⁷ Surface Location

UI or lot no.	Section	Township	Range	Lot.Idn	Feet From The	North/South Line	Feet From The	East/West Line	County
K	9	20-S	37-E		1980	SOUTH	1900	WEST	LEA

⁸ Proposed Bottom Hole Location If Different From Surface

UI or lot no.	Section	Township	Range	Lot.Idn	Feet From The	North/South Line	Feet From The	East/West Line	County

⁹ Proposed Pool 1 EUMONT YATES, SEVEN RIVERS, QUEEN (PRO GAS)	¹⁰ Proposed Pool 2
---	-------------------------------

¹¹ Work Type Code N	¹² Well Type Code G	¹³ Rotary or C.T. ROTARY	¹⁴ Lease Type Code P	¹⁵ Ground Level Elevation 3540'
¹⁶ Multiple No	¹⁷ Proposed Depth 3550'	¹⁸ Formation YATES, 7 RV, QUN	¹⁹ Contractor	²⁰ Spud Date 4/15/95

²¹ Proposed Casing and Cement Program

SIZE OF HOLE	SIZE OF CASING	WEIGHT PER FOOT	SETTING DEPTH	SACKS OF CEMENT	EST. TOP
11	8 5/8	24#	425'	200 SACKS	SURFACE
7 7/8	5 1/2	15.5#	3550'	650 SACKS	SURFACE

²² Describe the proposed program. If this application is to DEEPEN or PLUG BACK give the data on the present productive zone and proposed new productive zone. Describe the blow out prevention program, if any. Use additional sheets if necessary.

CEMENTING PF OGRAM:

SURFACE CASING - 200 SACKS CLASS C w/ 2% CACL2 (14.8 PPG, 1.34 CF/S, 6.31 GW/S).
PRODUCTION CASING - 350 SACKS 35/65 POZ H w/ 6% GEL, 5% SALT, 1/4# FLOCELE (12.4 PPG, 2.14 CF/S, 11.9 GW/S). F/B 300 SACKS 50/50 POZ H w/ 2% GEL, 5% SALT, 1/4# FC (13.5 PPG, 1.54 CF/S, 7.7 GW/S).

THERE ARE NO OTHER OPERATORS IN THIS QUARTER QUARTER SECTION.

NON-STANDARD GAS PRORATION UNIT: ORDER R-520.

Permit Expires 6 Months From Approval
Date: 3/21/95

²³ I hereby certify that the rules and regulations of the Oil Conservation Division have been complied with and that the information given above is true and complete to the best of my knowledge and belief.

Signature

C. Wade Howard

Printed Name

C. Wade Howard

Title

Eng. Assistant

Date

3/21/95

Telephone

688-4606

OIL CONSERVATION DIVISION

Approved ORIGINAL SIGNED BY JERRY SEXTON
DISTRICT I SUPERVISOR

Title:

Approval Date: MAR 23 1995

Expiration Date:

Conditions of Approval:

Attached

RECEIVED

2 1995

ROBBS
OFFICE

DISTRICT I
P. O. Box 1980, Hobbs, NM 88240

DISTRICT II
P. O. Drawer DD, Artesia, NM 88210

DISTRICT III
1000 Rio Brazos Rd., Aztec, NM 87410

DISTRICT IV
P. O. Box 2088, Santa Fe, NM 87504-2088

State of New Mexico
Energy, Minerals and Natural Resources Department

Form C-102
Revised February 10, 1994

Instructions on back

OIL CONSERVATION DIVISION
PO Box 2088
Santa Fe, NM 87504-2088

Submit to Appropriate District Office

State Lease-4 copies
Fee Lease-3 copies

WELL LOCATION AND ACREAGE DEDICATION PLAT

AMENDED REPORT

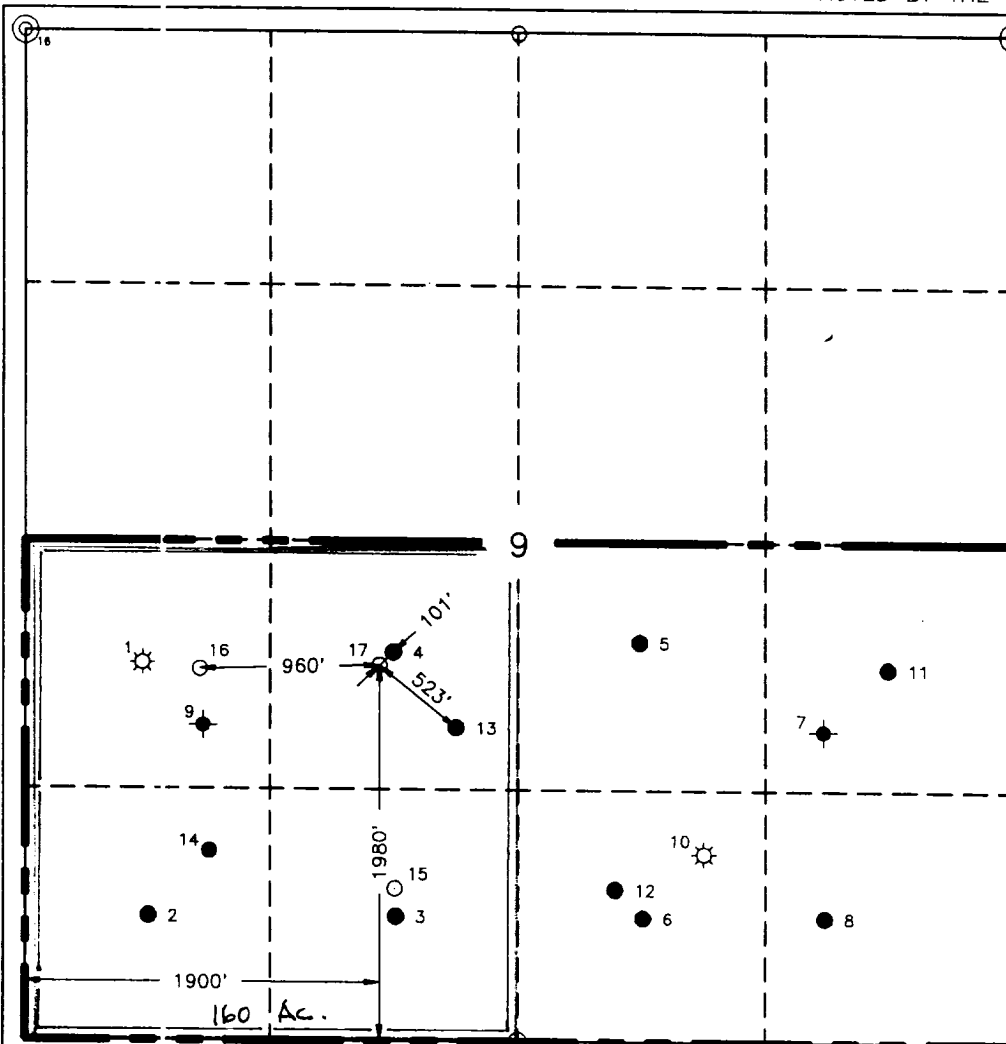
¹ AP Number 35-1-25-32346		² Pool Code 7643E		³ Pool Name Eumont Yates, Seven Rivers, Queen (Pro Gas)	
⁴ Property Code 11127		⁵ Property Name L. Van Etten			⁶ Well Number 17
⁷ OGRID No. 2235		⁸ Operator Name TEXACO EXPLORATION & PRODUCTION, INC.			⁹ Elevation 3540'

¹⁰ Surface Location									
UL or lot no. K	Section 9	Township 20-S	Range 37-E	Lot idn	Feet from the 1980'	North/South line South	Feet from the 1900'	East/West line West	County Lea

¹¹ Bottom Hole Location If Different From Surface									
UL or lot no.	Section	Township	Range	Lot idn	Feet from the	North/South line	Feet from the	East/West line	County

¹² Dedicated Acres 160	¹³ Joint or Infill	¹⁴ Consolidation Code	¹⁵ Order No.
--------------------------------------	-------------------------------	----------------------------------	-------------------------

NO ALLOWABLE WILL BE ASSIGNED TO THIS COMPLETION UNTIL ALL INTERESTS HAVE BEEN CONSOLIDATED OR A NON-STANDARD UNIT HAS BEEN APPROVED BY THE DIVISION.

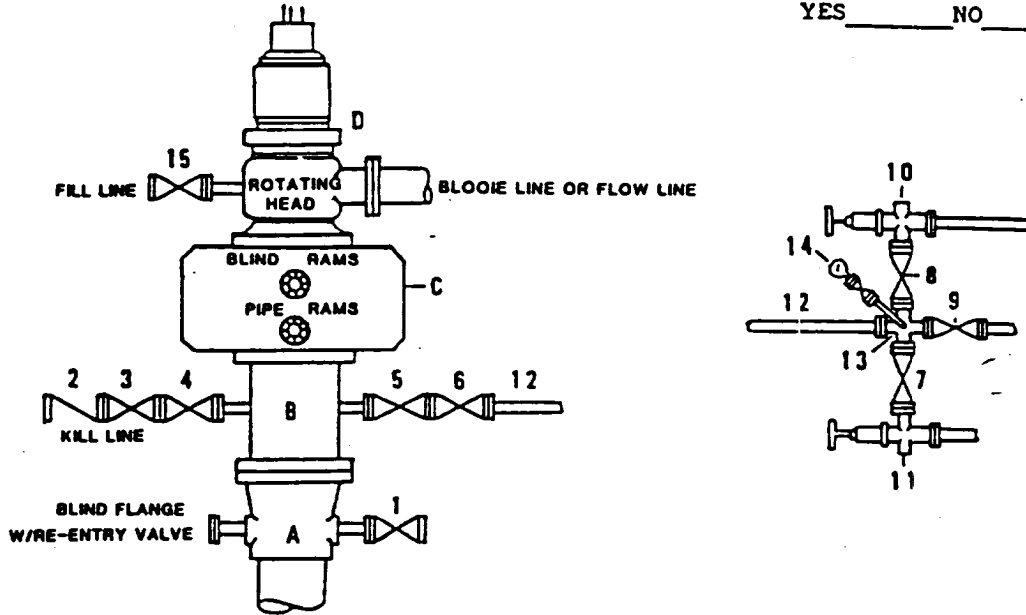


¹⁶ OPERATOR CERTIFICATION
I hereby certify that the information contained herein is true and complete to the best of my knowledge and belief.
Signature <i>C. Wade Howard</i>
Printed Name C. Wade Howard
Position Engineer's Assistant
Company Texaco Expl. & Prod. Inc.
Date March 9, 1995
¹⁷ SURVEYOR CERTIFICATION
I hereby certify that the well location shown on this plat was plotted from field notes of actual surveys made by me or under my supervision, and that the same is true and correct to the best of my knowledge and belief.
Date Surveyed March 3, 1995
Signature & Seal of Professional Surveyor <i>John S. Piper</i>
Certificate No. 7264 John S. Piper
Sheet

see amended location

**DRILLING CONTROL
CONDITION II-B 3000 WP
FOR AIR DRILLING OR
WHERE NITROGEN OR AIR BLOWS ARE EXPECTED**

H₂S TRIM REQUIRED
YES _____ NO _____



DRILLING CONTROL

MATERIAL LIST - CONDITION II - B

- A Texaco Wellhead
- B 3000# W.P. drilling spool with a 2" minimum flanged outlet for kill line and 3" minimum flanged outlet for choke line.
- C 3000# W.P. Dual ram type preventer, hydraulic operated with 1" steel, 3000# W.P. control lines (where sub-structure height is adequate, 2 - 3000# W.P. single ram type preventers may be utilized).
- D Rotating Head with fill up outlet and extended Blooie Line.
- 1,3,4,7,8, 2" minimum 3000# W.P. flanged full opening steel gate valve, or Halliburton Lo Torc Plug valve.
- 2 2" minimum 3000# W.P. back pressure valve.
- 5,6,9 3" minimum 3000# W.P. flanged full opening steel gate valve, or Halliburton Lo Torc Plug valve.
- 12 3" minimum schedule 80, Grade "B", seamless line pipe.
- 13 2" minimum x 3" minimum 3000# W.P. flanged cross.
- 10,11 2" minimum 3000# W.P. adjustable choke bodies.
- 14 Cameron Mud Gauge or equivalent (location optional in choke line).
- 15 2" minimum 3000# W.P. flanged or threaded full opening steel gate valve, or Halliburton Lo Torc Plug valve.

	TEXACO, INC. MIDLAND DIVISION MIDLAND, TEXAS	
EXHIBIT C		

SCALE	DATE	EST. NO.	DRG. NO.
CRAWN BY			
CHECKED BY			
APPROVED BY			