

DISTRICT I
P. O. Box 1980, Hobbs, NM 88240

DISTRICT II
P. O. Drawer DD, Artesia, NM 88210

DISTRICT III
1000 Rio Brazos Rd., Aztec, NM 87410

DISTRICT IV
P. O. Box 2088, Santa Fe, NM 87504-2088

State of New Mexico
Energy, Minerals and Natural Resources Department

OIL CONSERVATION DIVISION
PO Box 2088
Santa Fe, NM 87504-2088

Form C-102
Revised February 10, 1994

Instructions on back

Submit to Appropriate District Office

State Lease-4 copies
Fee Lease-3 copies

AMENDED REPORT

WELL LOCATION AND ACREAGE DEDICATION FLAT

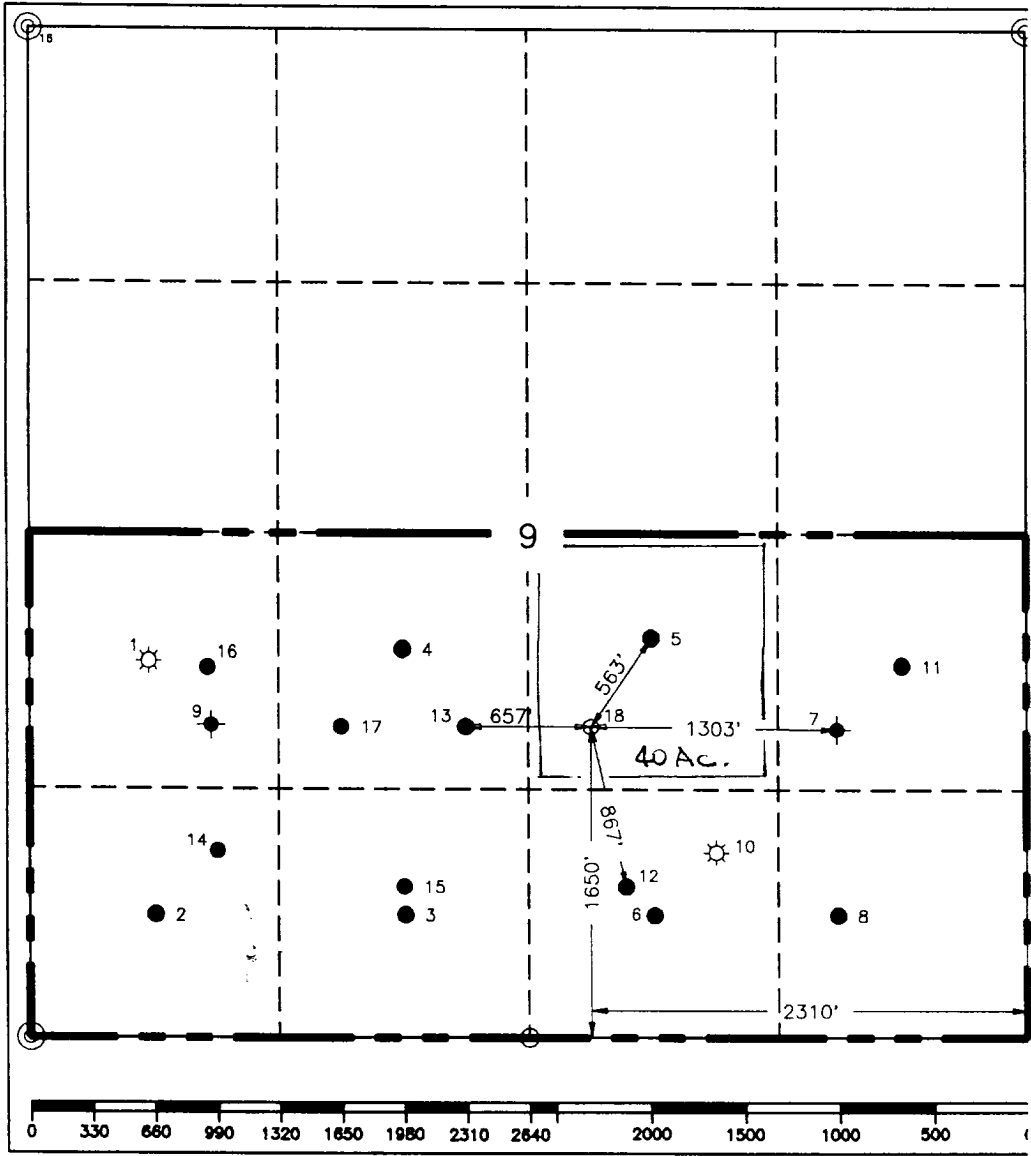
¹ API Number 30-025-33349		² Pool Code 47080		³ Pool Name Monument Paddock	
⁴ Property Code 11127		⁵ Property Name L. Van Etten			⁶ Well Number 18
⁷ GRID No. 22351		⁸ Operator Name TEXACO EXPLORATION & PRODUCTION, INC.			⁹ Elevation 3540'

¹⁰ Surface Location										
UL or lot no. J	Section 9	Township 20-S	Range 37-E	Lot Idn	Feet from the 1650'	North/South line South	Feet from the 231(1)'	East/West line East	⁷ County Lea	

¹¹ Bottom Hole Location If Different From Surface										
UL or lot no.	Section	Township	Range	Lot Idn	Feet from the	North/South line	Feet from the	East/West line	⁷ County	

¹² Dedicated Acres 40	¹³ Joint or Infill	¹⁴ Consolidation Code	¹⁵ Order No.
-------------------------------------	-------------------------------	----------------------------------	-------------------------

NO ALLOWABLE WILL BE ASSIGNED TO THIS COMPLETION UNTIL ALL INTERESTS HAVE BEEN CONSOLIDATED OR A NON-STANDARD UNIT HAS BEEN APPROVED BY THE DIVISION.



¹⁰OPERATOR CERTIFICATION

I hereby certify that the information contained herein is true and complete to the best of my knowledge and belief.

Signature: *C. Wade Howard*

Printed Name: C. Wade Howard

Position: Engineer's Assistant

Company: Texaco Expl. & Prod. Inc.

Date: March 29, 1996

¹⁶SURVEYOR CERTIFICATION

I hereby certify that the well location shown on this plat was plotted from field notes of actual surveys made by me or under my supervision, and that the same is true and correct to the best of my knowledge and belief.

Date Surveyed: March 28, 1996

Signature & Seal of Professional Surveyor: *John S. Piper*

Certificate No.: 7254 John S. Piper

Sheet

APR 2006
Received
Hobbs
OCD

1 2 3 4 5 6 7 8 9 10 11 12 13 14 15 16 17 18 19 20 21 22 23 24 25 26 27 28 29 30 31