

DISTRICT I
P. O. Box 1980, Hobbs, NM 88240

DISTRICT II
P. O. Drawer DD, Artesia, NM 88210

DISTRICT III
1000 Rio Brazos Rd., Aztec, NM 87410

DISTRICT IV
P. O. Box 2088, Santa Fe, NM 87504-2088

State of New Mexico
Energy, Minerals and Natural Resources Department

Form C-102
Revised February 10, 1994

OIL CONSERVATION DIVISION

PO Box 2088
Santa Fe, NM 87504-2088

Submit to Appropriate District Office

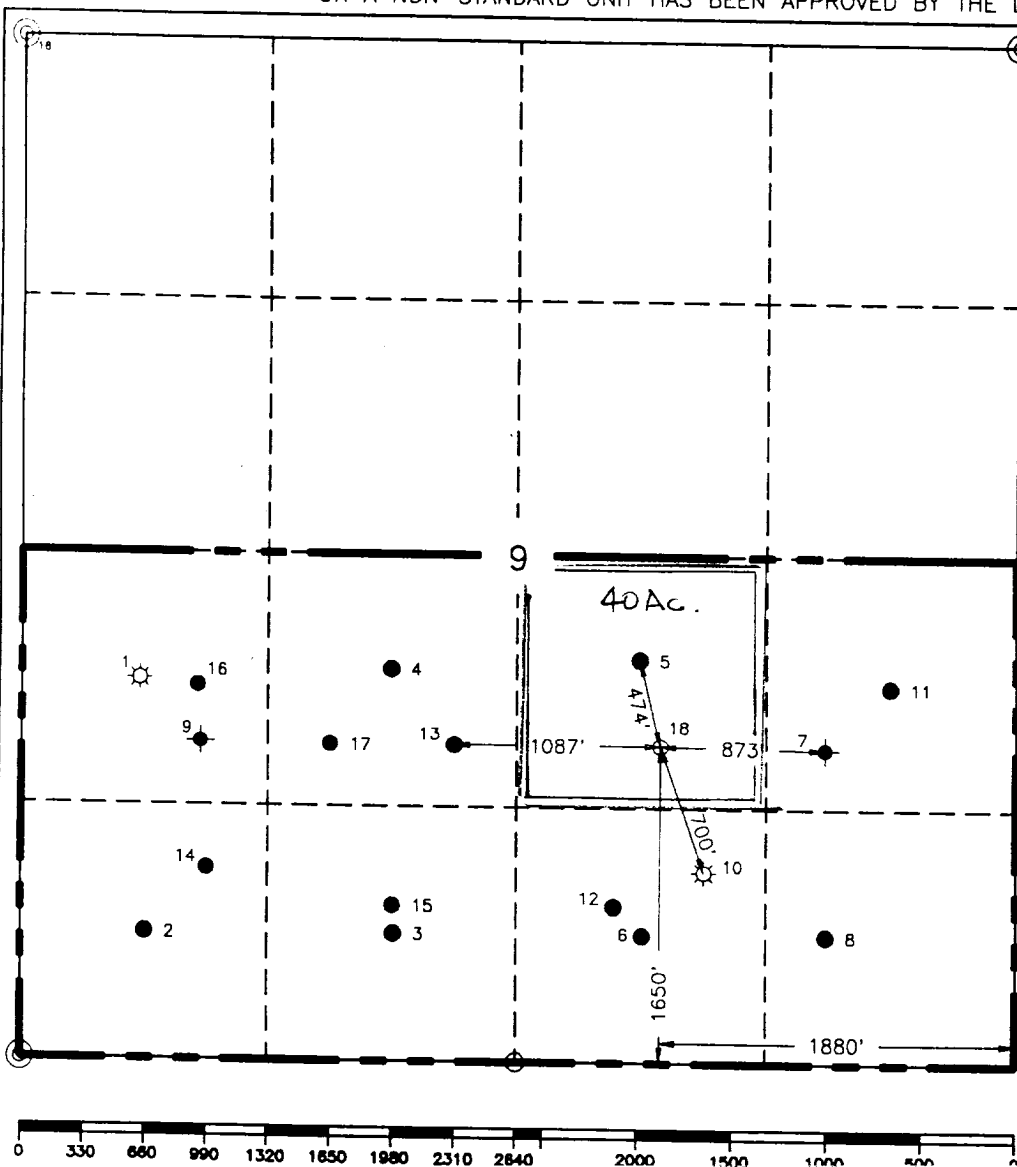
State Lease-4 copies
Fee Lease-3 copies

WELL LOCATION AND ACREAGE DEDICATION PLAT

AMENDED REPORT

¹ API Number 31-22-35349		² Pool Code 4225		³ Pool Name Monument Paddock					
⁴ Property Code 1127		⁵ Property Name L. Van Etten						⁶ Well Number 18	
⁷ GRID No. 22351		⁸ Operator Name TEXACO EXPLORATION & PRODUCTION, INC.						⁹ Elevation 3543'	
¹⁰ Surface Location									
UL or lot no. J	Section 9	Township 20-S	Range 37-E	Lot Idn	Feet from the 1650'	North/South line South	Feet from the 1880'	East/West line East	⁷ County Lea
¹¹ Bottom Hole Location if Different From Surface									
UL or lot no.	Section	Township	Range	Lot Idn	Feet from the	North/South line	Feet from the	East/West line	⁷ County
¹² Dedicated Acres 40		¹³ Joint or Infill		¹⁴ Consolidation Code		¹⁵ Order No.			

NO ALLOWABLE WILL BE ASSIGNED TO THIS COMPLETION UNTIL ALL INTERESTS HAVE BEEN CONSOLIDATED OR A NON-STANDARD UNIT HAS BEEN APPROVED BY THE DIVISION.



¹OPERATOR CERTIFICATION

I hereby certify that the information contained herein is true and complete to the best of my knowledge and belief.

Signature
C. Wade Howard

Printed Name
C. Wade Howard

Position
Engineer's Assistant

Company
Texaco Expl. & Prod. Inc.

Date
March 21, 1996

¹⁶SURVEYOR CERTIFICATION

I hereby certify that the well location shown on this plat was plotted from field notes of actual surveys made by me or under my supervision, and that the same is true and correct to the best of my knowledge and belief.

Date Surveyed
March 19, 1996

Signature & Seal of Professional Surveyor
John S. Piper

Certificate No.
7254 John S. Piper

