

District I
 PO Box 1980, Hobbs, NM 88241-1980
 District II
 PO Drawer DD, Artesia, NM 88211-0719
 District III
 1000 Rio Brazos Rd., Aztec, NM 87410
 District IV
 PO Box 2088, Santa Fe, NM 87504-2088

State of New Mexico
 Energy, Minerals & Natural Resources Department

OIL CONSERVATION DIVISION
 PO Box 2088
 Santa Fe, NM 87504-2088

Form C-101
 Revised February 10, 1994
 Instructions on back
 Submit to Appropriate District Office
 State Lease - 6 Copies
 Fee Lease - 5 Copies

AMENDED REPORT

APPLICATION FOR PERMIT TO DRILL, RE-ENTER, DEEPEN, PLUGBACK, OR ADD A ZONE

Operator Name and Address. Matador Operating Company 415 W. Wall, Ste 1101 Midland, TX 79701		OGRID Number 014245
		API Number 30-025-33383
Property Code 6602	Property Name Lea AQ State	Well No. 8

Surface Location

UL or lot no.	Section	Township	Range	Lot Idn	Feet from the	North/South line	Feet from the	East/West line	County
M	29	19S	35E		330	South	330	West	Lea

Proposed Bottom Hole Location If Different From Surface

UL or lot no.	Section	Township	Range	Lot Idn	Feet from the	North/South line	Feet from the	East/West line	County
Proposed Pool 1 Pearl San Andres West					Proposed Pool 2				

Work Type Code N	Well Type Code 0	Cable/Rotary Rotary	Lease Type Code S	Ground Level Elevation 3743
Multiple No	Proposed Depth 6000	Formation San Andres	Contractor Norton Drilling	Spud Date asap

Proposed Casing and Cement Program


Hole Size	Casing Size	Casing weight/foot	Setting Depth	Sacks of Cement	Estimated TOC
12-1/4	8-5/8	24#	425	300	surface
7-7/8	5-1/2	15.5#	6000	1500	surface

Describe the proposed program. If this application is to DEEPEN or PLUG BACK give the data on the present productive zone and proposed new productive zone. Describe the blowout prevention program, if any. Use additional sheets if necessary.

Drill 6000' San Andres test w/ double ram 3000 psi BOP stack during 7-7/8" hole interval.

Permit Expires 1 Year From Approval
 Date Unless Drilling Underway

I hereby certify that the information given above is true and complete to the best of my knowledge and belief.

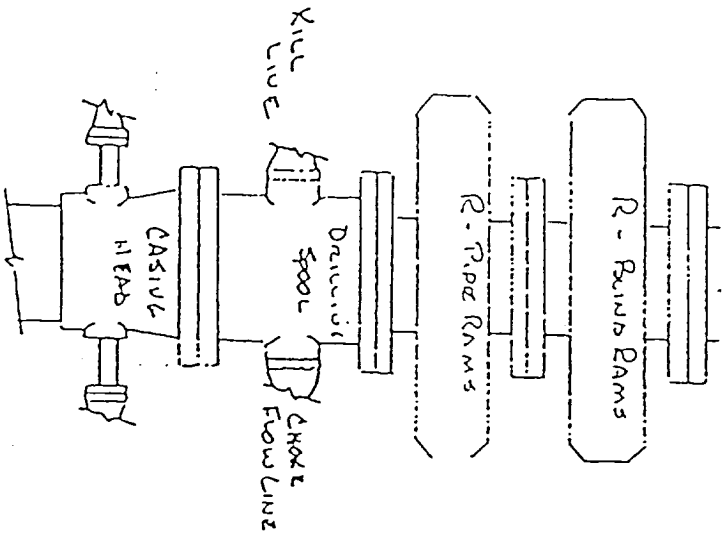
Signature: 
 Printed name: R. F. Burke
 Title: Operations Manager
 Date: 4-15-96
 Phone: 214-373-8795

OIL CONSERVATION DIVISION	
Approved by: ORIGINAL SIGNED BY JERRY SEXTON DISTRICT I SUPERVISOR	
Title:	
Approval Date: APR 22 1996	Expiration Date:
Conditions of Approval: Attached <input type="checkbox"/>	

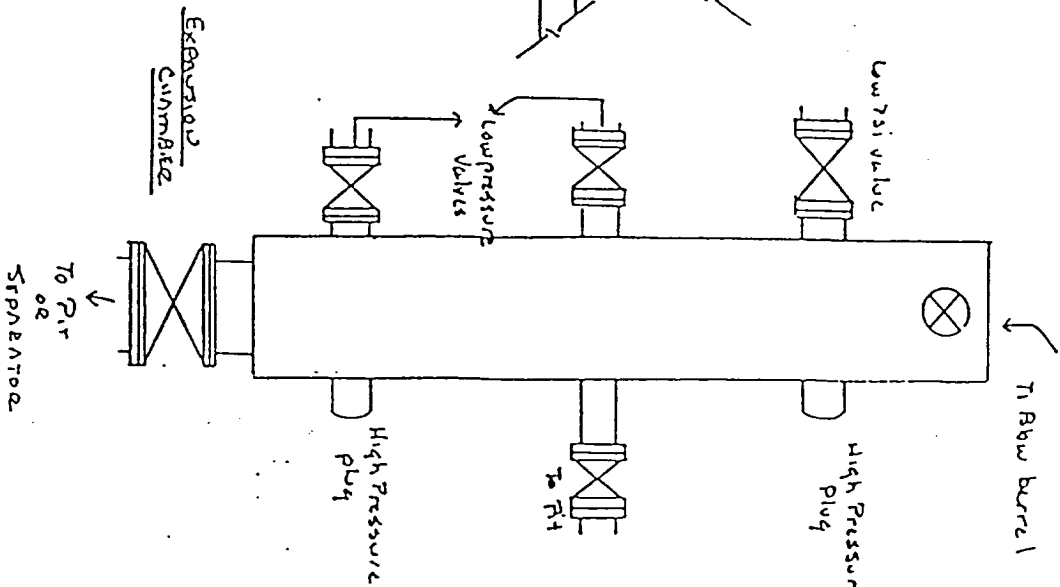
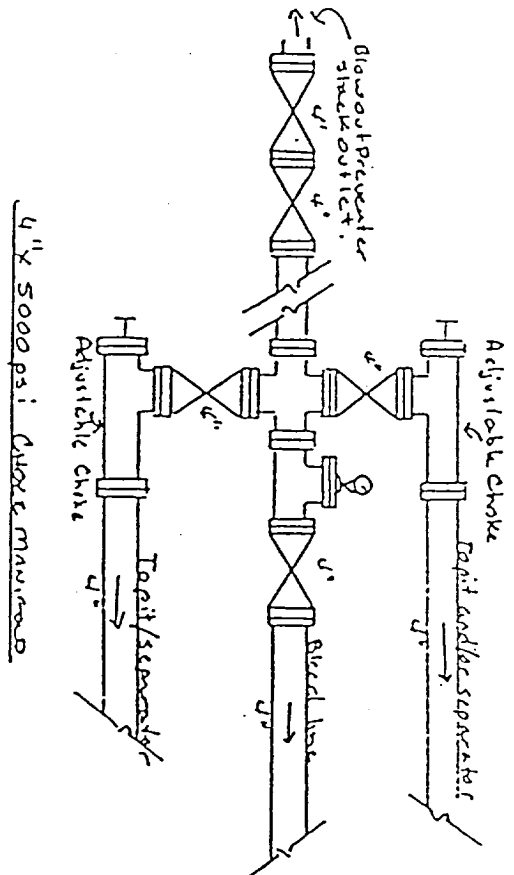
FORM 8-1 1994



Blowout Preventer
 Matador Operating Company
 Lea AQ State #8
 330 FSL, 330 FWL
 Sec. 29-19S-35E
 Lea County, New Mexico



5000 PSI
 WORKING PRESSURE





DISTRICT I
 P. O. Box 1980
 Hobbs, NM 88241-1980

State of New Mexico
 Geology, Minerals, and Natural Resources Department

Form C-102
 Revised 02-10-94

Instructions on back

DISTRICT II
 P. O. Drawer DD
 Artesia, NM 88211-0719

OIL CONSERVATION DIVISION
 P. O. Box 2088
 Santa Fe, New Mexico 87504-2088

Submit to the Appropriate
 District Office
 State Lease - 4 copies
 Fee Lease - 3 copies

DISTRICT III
 1000 Rio Brazos Rd.
 Aztec, NM 87410

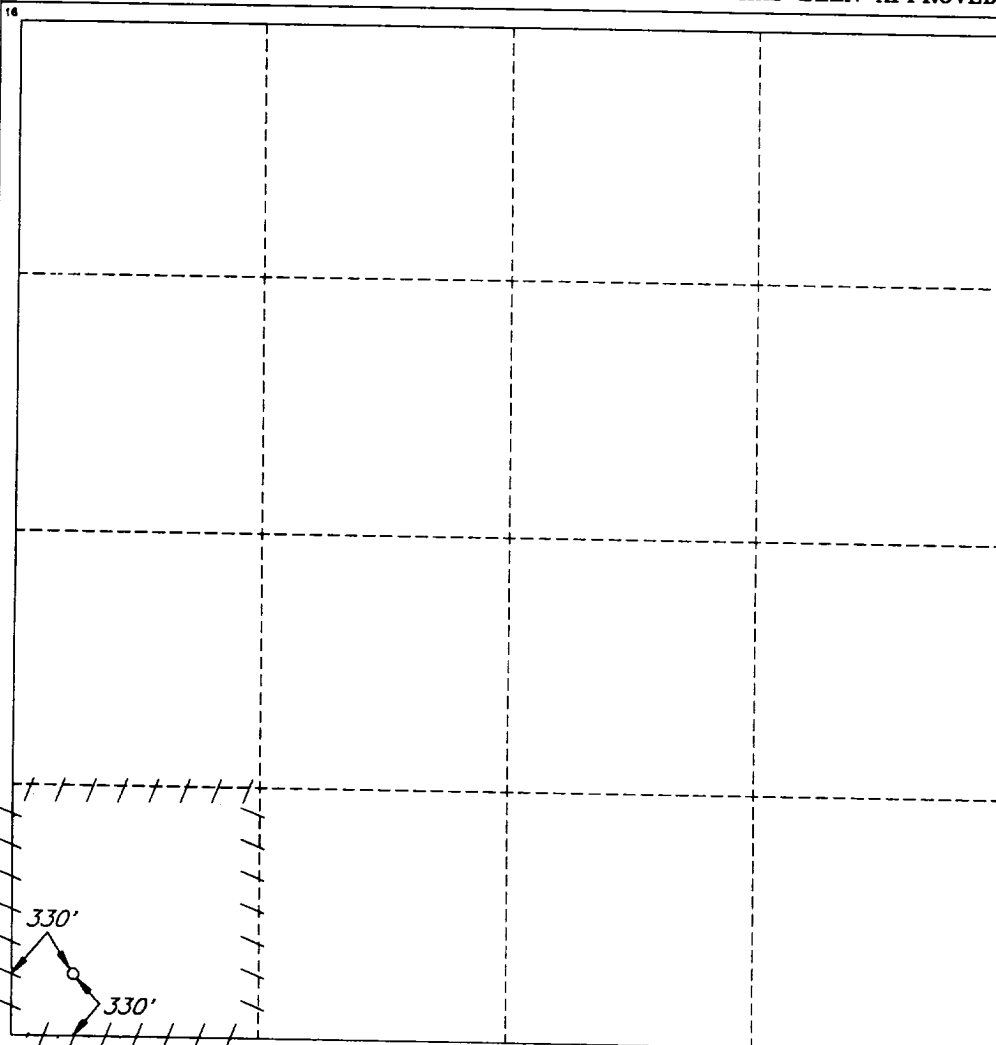
AMENDED REPORT

DISTRICT IV
 P. O. Box 2088
 Santa Fe, NM 87507-2088

WELL LOCATION AND ACREAGE DEDICATION PLAT

1 API Number 30-025-3393		2 Pool Code 49820		3 Pool Name Pearl San Andres West					
4 Property Code 6602		5 Property Name LEA AQ STATE						6 Well Number 8	
7 OGRID No. 014245		8 Operator Name MATADOR OPERATING COMPANY						9 Elevation 3743'	
10 SURFACE LOCATION									
UL or lot no. M	Section 29	Township 19 SOUTH	Range 35 EAST, N.M.P.M.	Lot Ida	Feet from the 330'	North/South line SOUTH	Feet from the 330'	East/West line WEST	County LEA
11 BOTTOM HOLE LOCATION IF DIFFERENT FROM SURFACE									
UL or lot no.	Section	Township	Range	Lot Ida	Feet from the	North/South line	Feet from the	East/West line	County
12 Dedicated Acres 40		13 Joint or Infill		14 Consolidation Code		15 Order No.			

NO ALLOWABLE WELL BE ASSIGNED TO THIS COMPLETION UNTIL ALL INTERESTS HAVE BEEN CONSOLIDATED OR A NON-STANDARD UNIT HAS BEEN APPROVED BY THE DIVISION



OPERATOR CERTIFICATION

I hereby certify that the information contained herein is true and complete to the best of my knowledge and belief.

Signature: *[Handwritten Signature]*
 Printed Name: R. F. Burke
 Title: Operations Manager
 Date: 4-18-96

SURVEYOR CERTIFICATION

I hereby certify that the well location shown on this plat was plotted from field notes of actual surveys made by me or under my supervision, and that the same is true and correct to the best of my belief.

Date of Survey: APRIL 15 1996
 Signature and Seal of Professional Surveyor: *[Handwritten Signature]*
 V. LYNN BEZNER
 NO. 7920
 Certified: *[Handwritten Signature]*
 V. L. BEZNER R.P.S. #7920
 JOB #45006 / 71 NW / V.H.B.

New Mexico Oil Conservation Division
C-102 Instructions

IF THIS IS AN AMENDED REPORT, CHECK THE BOX LABELED
"AMENDED REPORT" AT THE TOP OF THIS DOCUMENT.

Surveyors shall use the latest United States government survey or dependent resurvey. Well locations will be in reference to the New Mexico Principal Meridian. If the land is not surveyed contact the appropriate OCD district office. Independent subdivision surveys will not be acceptable.

1. The OCD assigned API number for this well
2. The pool code for this (proposed) completion
3. The pool name for this (proposed) completion
4. The property code for this (proposed) completion
5. The property name (well name) for this (proposed) completion
6. The well number for this (proposed) completion
7. Operator's OGRID number
8. The operator's name
9. The ground level elevation of this well
10. ~~The surveyed surface location of this well measured from the section lines~~ NOTE: If the United States government survey designates a Lot Number for this location use that number in the "UL or lot no." box. Otherwise use the OCD unit letter.
11. Proposed bottom hole location. If this is a horizontal hole indicate the location of the end of the hole.
12. The calculated acreage dedicated to this completion to nearest hundredth of an acre
13. Put a Y if more than one completion will be sharing this same acreage or N if this is the only completion on this acreage
14. If more than one lease of different ownership has been dedicated to the well show the consolidation code from the following table:
C Communitization
U Unitization

16. This grid represents a standard section. You may superimpose a non-standard section over this grid. Outline the dedicated acreage and the separate leases within that dedicated acreage. Show the well surface location and bottom hole location, if it is directionally drilled, with the dimensions from the section lines in the dimensions from the section lines in the cardinal directions. (Note: A legal location is determined from the perpendicular distance to the edge of the tract.) If this is a high angle or horizontal hole show that portion of the well bore that is open within this pool.

Show all lots, lot numbers, and their respective acreage.

If more than one lease has been dedicated to this completion, outline each one and identify the ownership as to both working interest and royalty.

17. The signature, printed name, and title of the person authorized to make this report, and the date this document was signed.
18. The Registered surveyors certification. This section does not have to be completed if this form has been previously accepted by the OCD and is being filed for a change of pool or dedicated acreage.



9/15/97