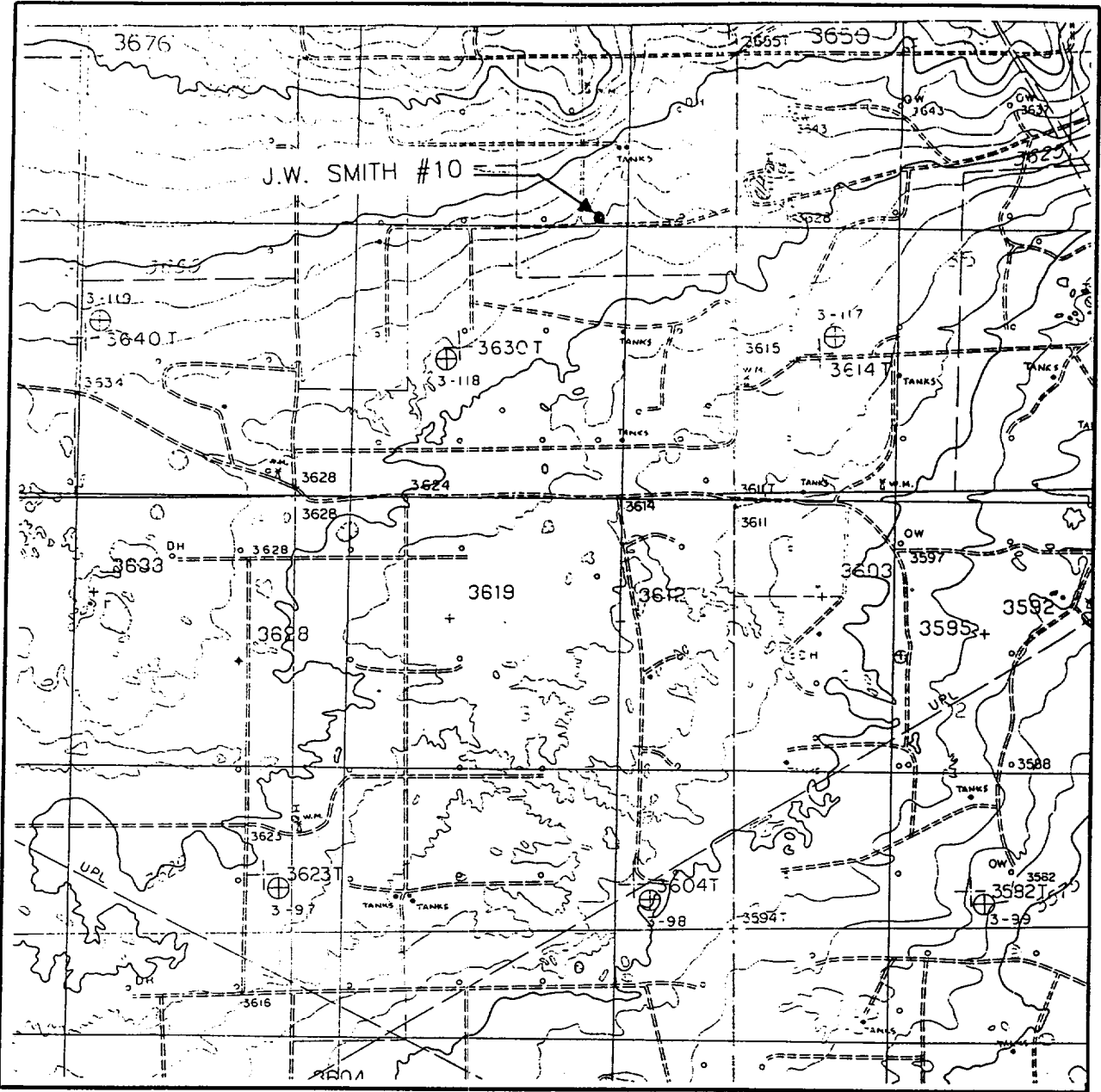


LOCATION VERIFICATION MAP



SCALE: 1" = 2000'

CONTOUR INTERVAL:
MONUMENT SOUTH - 5'

SEC. 34 TWP. 19-S RGE. 36-E

SURVEY N.M.P.M.

COUNTY LEA

DESCRIPTION 1980' FNL & 1650' FEL

ELEVATION 3635

OPERATOR CHEVRON U.S.A. INC.

LEASE J.W. SMITH

U.S.G.S. TOPOGRAPHIC MAP

MONUMENT SOUTH, N.M.

JOHN WEST ENGINEERING
HOBBS, NEW MEXICO
(505) 393-3117

Handwritten text, possibly a signature or date, including the number 10/10/10.

Faint handwritten text or markings in the bottom right corner.