

DISTRICT I  
P. O. Box 1980, Hobbs, NM 88240

DISTRICT II  
P. O. Drawer DD, Artesia, NM 88210

DISTRICT III  
1000 Rio Brazos Rd., Aztec, NM 87410

DISTRICT IV  
P. O. Box 2088, Santa Fe, NM 87504-2088

State of New Mexico  
Energy, Minerals and Natural Resources Department

Form C-102  
Revised February 10, 1994

Instructions on back

OIL CONSERVATION DIVISION  
PO Box 2088  
Santa Fe, NM 87504-2088

Submit to Appropriate District Office

State Lease-4 copies  
Fee Lease-3 copies

AMENDED REPORT

WELL LOCATION AND ACREAGE DEDICATION PLAT

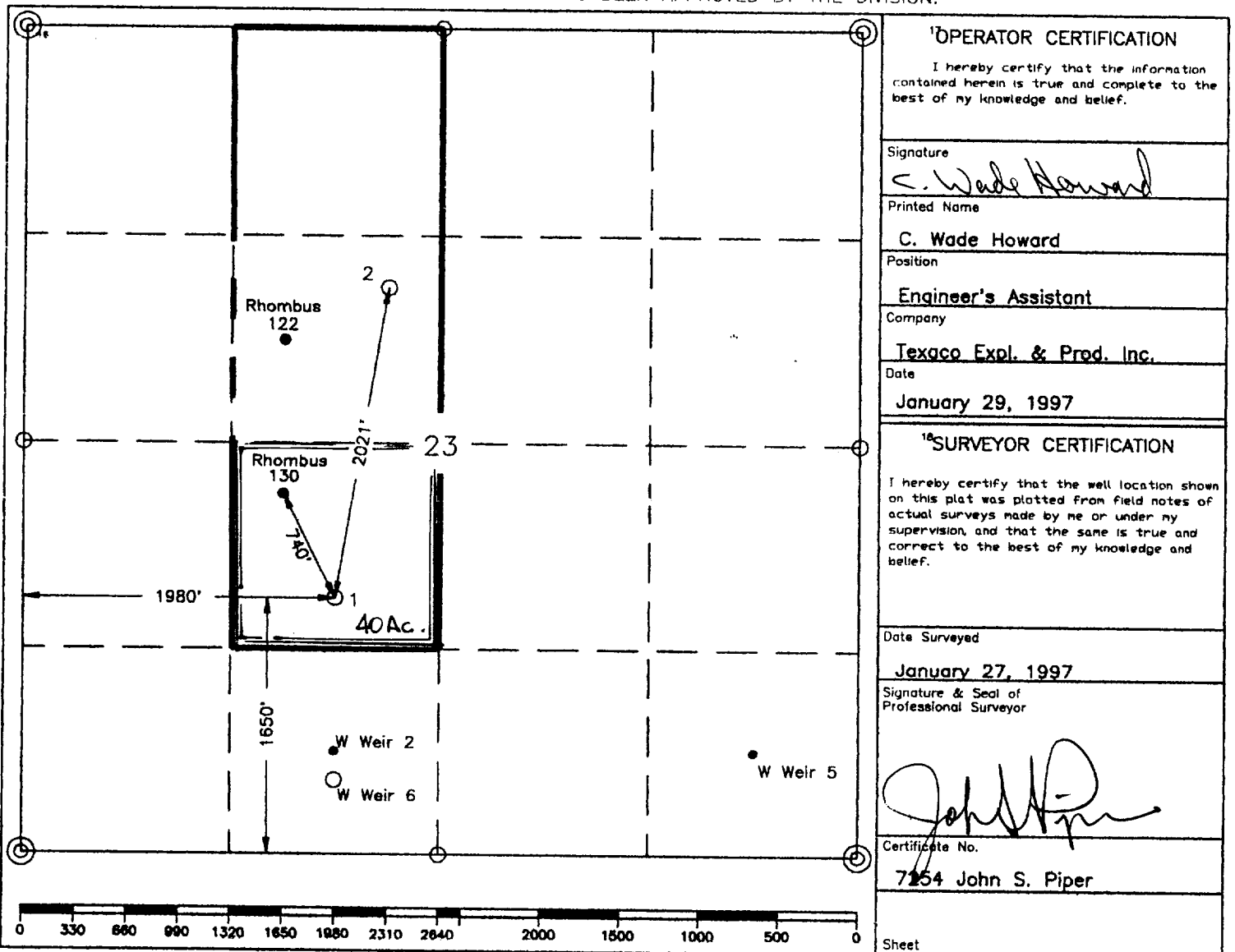
<sup>1</sup> API Number 3D-025-33814		<sup>2</sup> Pool Code 46970		<sup>3</sup> Pool Name Monument ABO	
<sup>4</sup> Property Code 20361		<sup>5</sup> Property Name New Mexico "E" State NCT-2			<sup>6</sup> Well Number 1
<sup>7</sup> GRID No. 22351		<sup>8</sup> Operator Name TEXACO EXPLORATION & PRODUCTION, INC.			<sup>9</sup> Elevation 3729'

<sup>10</sup> Surface Location									
UL or lot no.	Section	Township	Range	Lot Idn	Feet from the	North/South line	Feet from the	East/West line	<sup>7</sup> County
K	23	19-S	36-E		1650'	South	1980'	West	Lea

<sup>11</sup> Bottom Hole Location If Different From Surface									
UL or lot no.	Section	Township	Range	Lot Idn	Feet from the	North/South line	Feet from the	East/West line	<sup>7</sup> County

<sup>12</sup> Dedicated Acres 40	<sup>13</sup> Joint or Infill	<sup>14</sup> Consolidation Code	<sup>15</sup> Order No.
-------------------------------------	-------------------------------	----------------------------------	-------------------------

NO ALLOWABLE WILL BE ASSIGNED TO THIS COMPLETION UNTIL ALL INTERESTS HAVE BEEN CONSOLIDATED OR A NON-STANDARD UNIT HAS BEEN APPROVED BY THE DIVISION.



**<sup>17</sup>OPERATOR CERTIFICATION**

I hereby certify that the information contained herein is true and complete to the best of my knowledge and belief.

Signature: *C. Wade Howard*

Printed Name: C. Wade Howard

Position: Engineer's Assistant

Company: Texaco Expl. & Prod. Inc.

Date: January 29, 1997

**<sup>16</sup>SURVEYOR CERTIFICATION**

I hereby certify that the well location shown on this plat was plotted from field notes of actual surveys made by me or under my supervision, and that the same is true and correct to the best of my knowledge and belief.

Date Surveyed: January 27, 1997

Signature & Seal of Professional Surveyor: *John S. Piper*

Certificate No.: 7254 John S. Piper

○ = Staked Location • = Producing Well = Injection Well ◇ = Water Supply Well ◆ = Plugged & Abandon Well  
 ⊙ = Found Section Corner, 2 or 3" Iron Pipe & GLO B.C. ○ = Found 1/4 Section Corner, 1" Iron Pipe & GLO B.C.