

DISTRICT I
P.O. Box 1980, Hobbs, NM 88240

DISTRICT II
P.O. Drawer DD, Artesia, NM 88210

DISTRICT III
1000 Rio Brazos Rd., Artec, NM 87410

State of New Mexico
Energy, Minerals and Natural Resources Department

Form C-102
Revised February 10, 1994
Instruction on back
Submit to Appropriate District Office
State Lease - 4 Copies
Fee Lease - 3 Copies

OIL CONSERVATION DIVISION

P.O. Box 2088
Santa Fe, New Mexico 87504-2088

AMENDED REPORT

WELL LOCATION AND ACREAGE DEDICATION PLAT

API Number 30-025-33996	Pool Code 23000	Pool Name EUNICE-MONUMENT/GRAYBURG-SAN ANDRES
Property Code 000135	Property Name NMGSAU	Well Number 292
GRID No. 000495	Operator Name Amerada Hess Corporation	Elevation 3589'

Surface Location

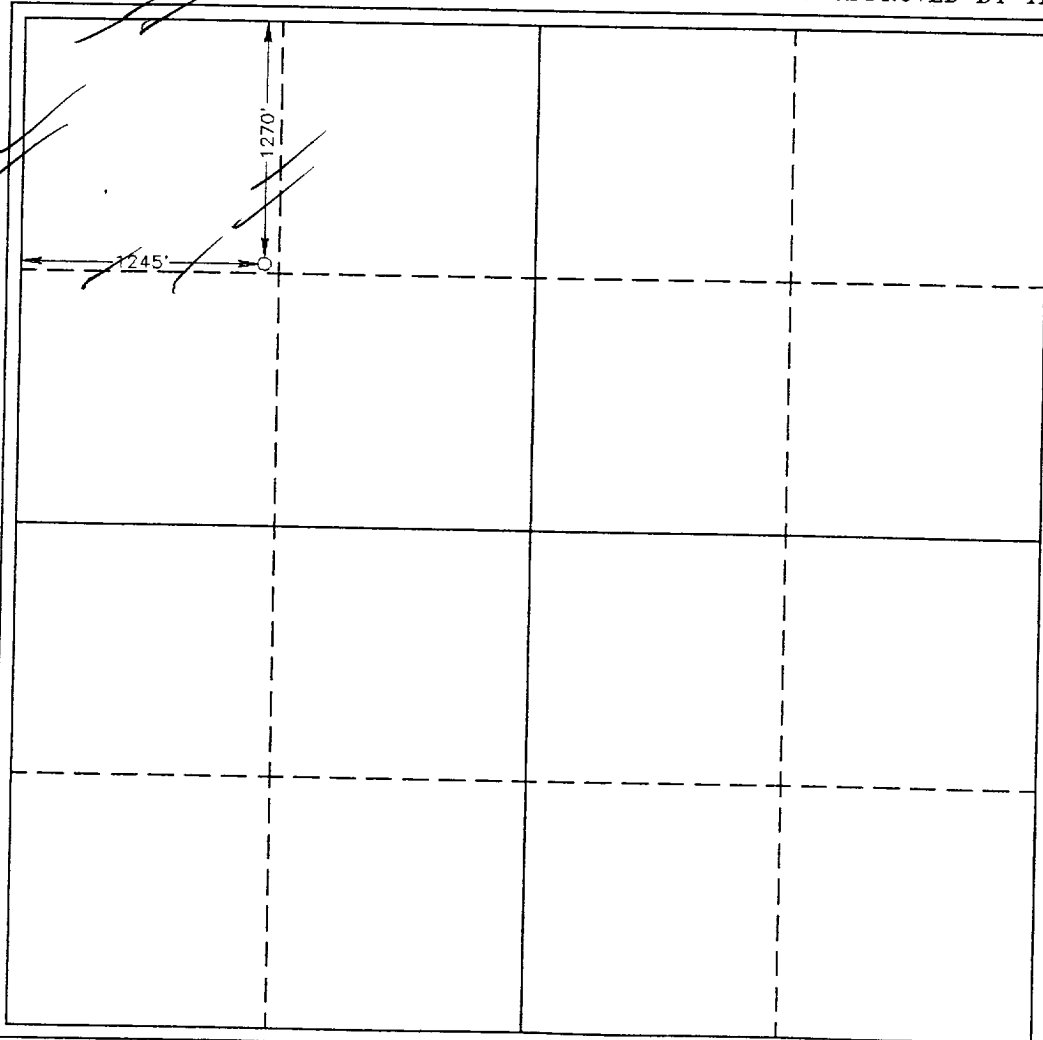
UL or lot No.	Section	Township	Range	Lot Idn	Feet from the	North/South line	Feet from the	East/West line	County
D	32	19 S	37 E		1270	North	1245	West	Lea

Bottom Hole Location If Different From Surface

UL or lot No.	Section	Township	Range	Lot Idn	Feet from the	North/South line	Feet from the	East/West line	County

Dedicated Acres 40	Joint or Infill Y	Consolidation Code U	Order No. UNITIZATION ORDER #R-9494/WF ORDER #R-9596
-----------------------	----------------------	-------------------------	---

NO ALLOWABLE WILL BE ASSIGNED TO THIS COMPLETION UNTIL ALL INTERESTS HAVE BEEN CONSOLIDATED OR A NON-STANDARD UNIT HAS BEEN APPROVED BY THE DIVISION



OPERATOR CERTIFICATION

I hereby certify the the information contained herein is true and complete to the best of my knowledge and belief.

Mike Jumper
Signature

MIKE JUMPER
Printed Name

ADM. SUPERVISOR
Title

05-27-97
Date

SURVEYOR CERTIFICATION

I hereby certify that the well location shown on this plat was plotted from field notes of actual surveys made by me or under my supervision and that the same is true and correct to the best of my belief.

May 6, 1997
Date Surveyed

L. JONES
Signature & Seal of Professional Surveyor

L. Jones
Professional Surveyor

No. 7977
Certificate No.

7977
Professional Land Surveyor

BASIN SURVEYS