

DISTRICT I
P.O. Box 1980, Hobbs, NM 88240

DISTRICT II
P.O. Drawer DU, Artesia, NM 88210

DISTRICT III
1000 Rio Brasow Rd., Aztec, NM 87410

State of New Mexico
Energy, Minerals and Natural Resources Department

Form C-102
Revised February 10, 1994
Instruction on back
Submit to Appropriate District Office
State Lease - 4 Copies
Fee Lease - 3 Copies

OIL CONSERVATION DIVISION
P.O. Box 2088
Santa Fe, New Mexico 87504-2088

AMENDED REPORT

WELL LOCATION AND ACREAGE DEDICATION PLAT

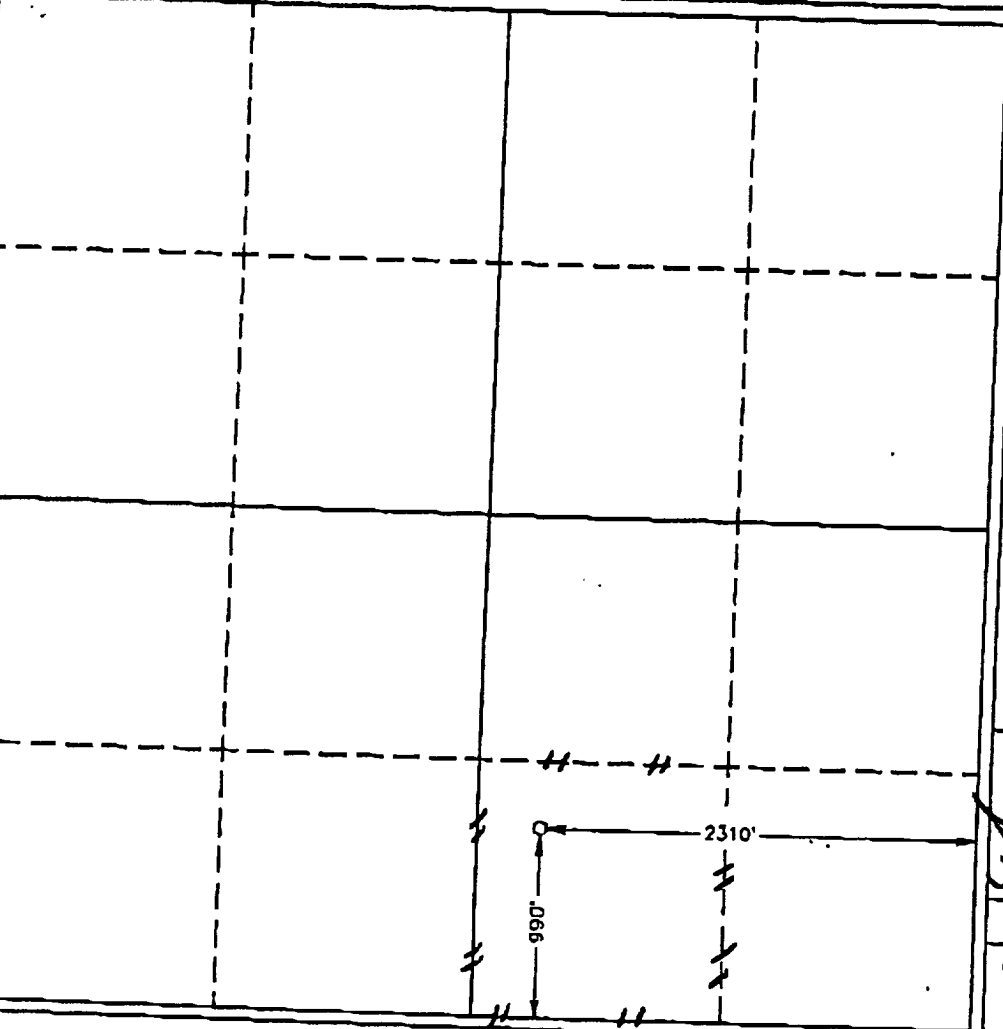
API Number		Pool Code	Pool Name	
Property Code		Property Name		Well Number
OGUHP No.		Operator Name		Elevation
000495		AMERADA HESS CORPORATION		3664'

Surface Location									
UL or lot No.	Section	Township	Range	Lot Idn	Feet from the	North/South line	Feet from the	East/West line	County
0	26	19 S	36 E		990	SOUTH	2310	EAST	LEA

Bottom Hole Location if Different From Surface									
UL or lot No.	Section	Township	Range	Lot Idn	Feet from the	North/South line	Feet from the	East/West line	County

Dedicated Acres	Joint or Infill	Consolidation Code	Order No.
40	NO		

NO ALLOWABLE WILL BE ASSIGNED TO THIS COMPLETION UNTIL ALL INTERESTS HAVE BEEN CONSOLIDATED OR A NON-STANDARD UNIT HAS BEEN APPROVED BY THE DIVISION



OPERATOR CERTIFICATION

I hereby certify the the information contained herein is true and complete to the best of my knowledge and belief.

Mike Jumper
Signature

MIKE JUMPER
Printed Name

ADM. SUPERVISOR DRILLING
Title

06-03-97
Date

SURVEYOR CERTIFICATION

I hereby certify that the well location shown on this plat was plotted from field notes of actual surveys made by me or under my supervision and that the same is true and correct to the best of my belief.

May 22 1997

Into Surveyed by L. JONES
Signature & Seal of Professional Surveyor

L. Jones
Professional Surveyor

7977

N.M. O. Num. 7198

Certified PROFESSIONAL SURVEYOR L. JONES, 7977