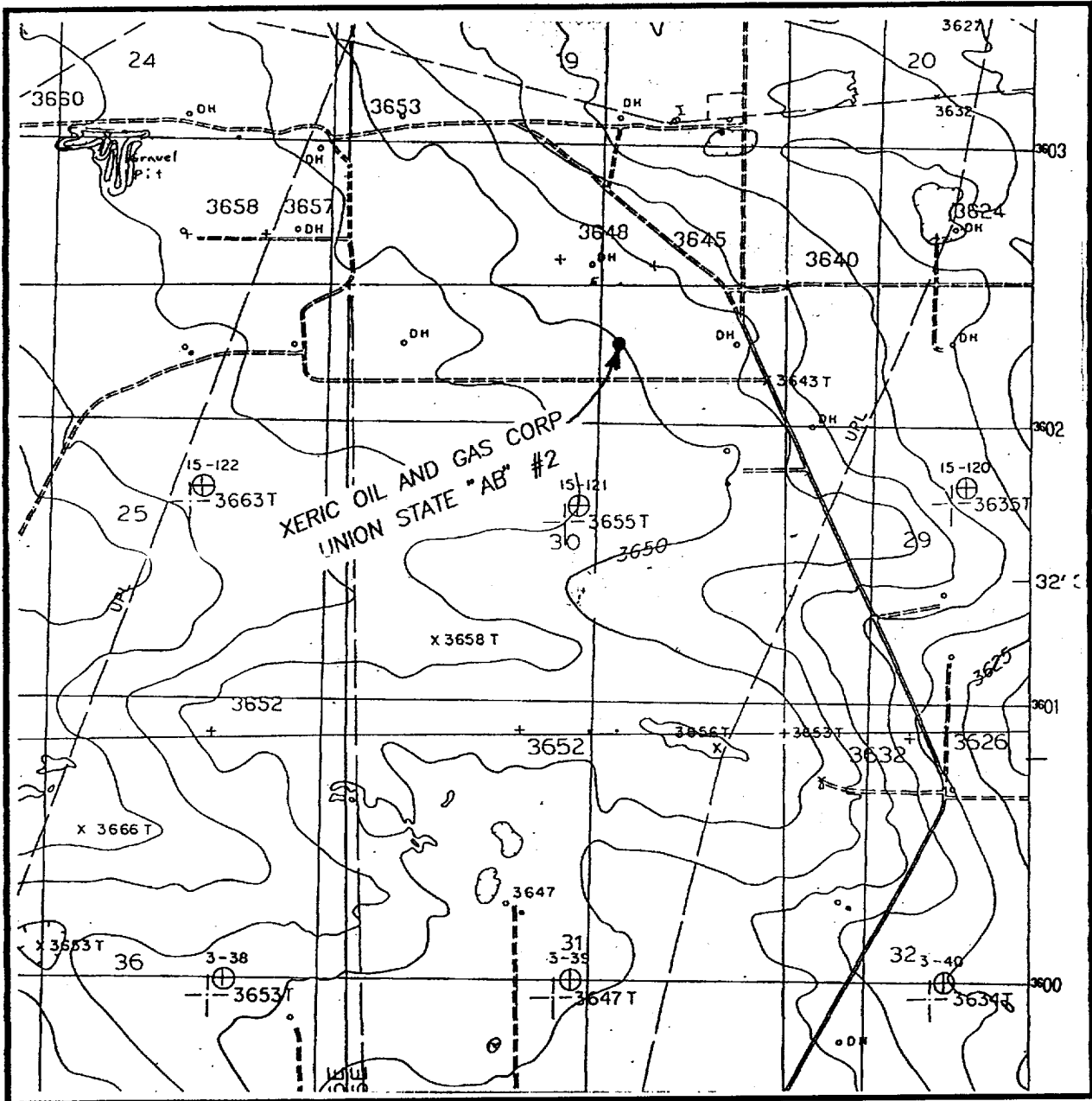


LOCATION VERIFICATION MAP



SCALE: 1" = 2000'

CONTOUR INTERVAL - 5'

SEC. 30 TWP. 20-S RGE. 36-E

SURVEY N.M.P.M.

COUNTY LEA

DESCRIPTION 660' FNL & 1980' FEL

ELEVATION 3648'

OPERATOR XERIC OIL AND GAS CORP.

LEASE UNION STATE "AB"

U.S.G.S. TOPOGRAPHIC MAP

JOHN WEST ENGINEERING
HOBBS, NEW MEXICO
(505) 393-3117