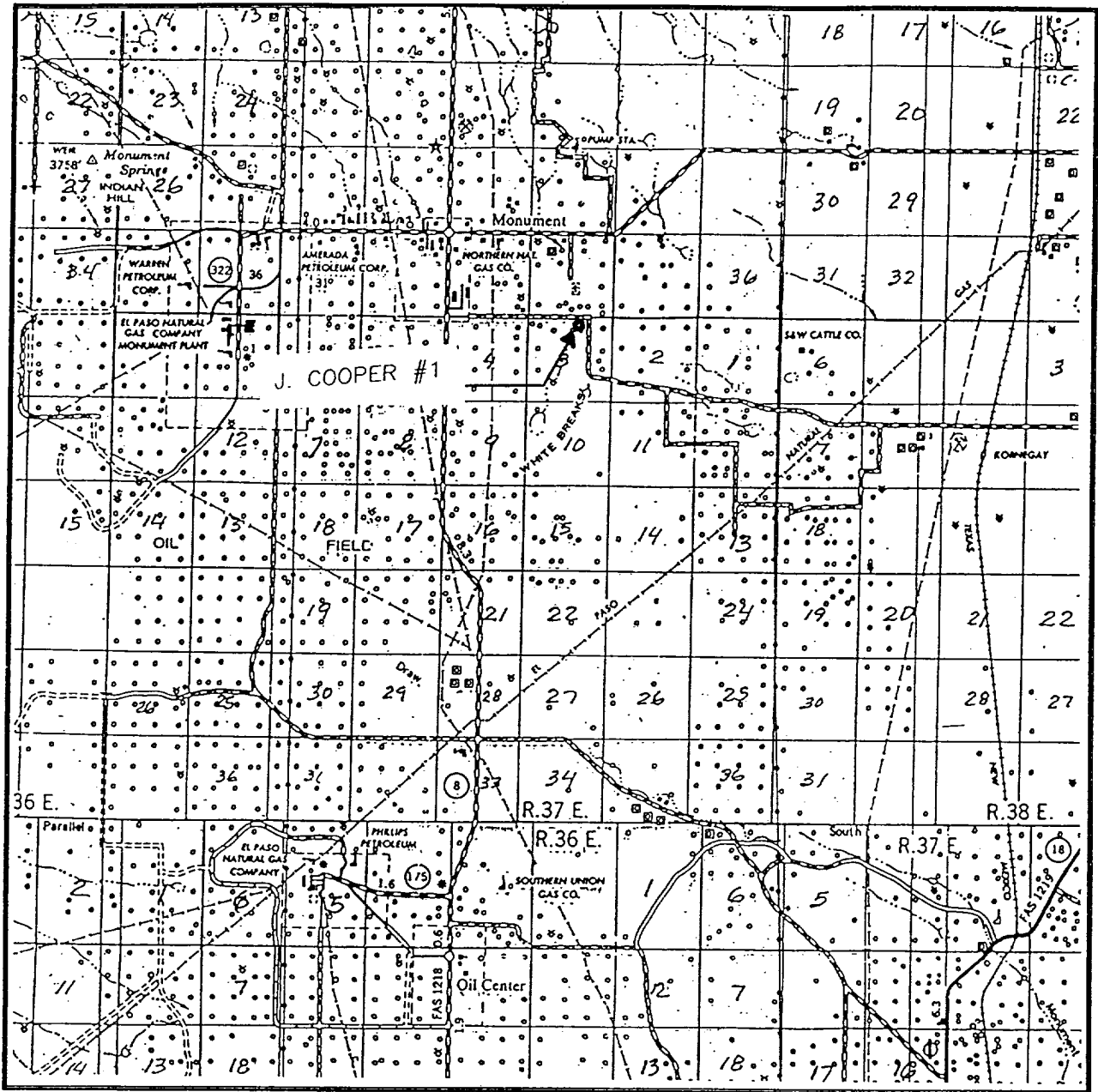


# VICINITY MA.



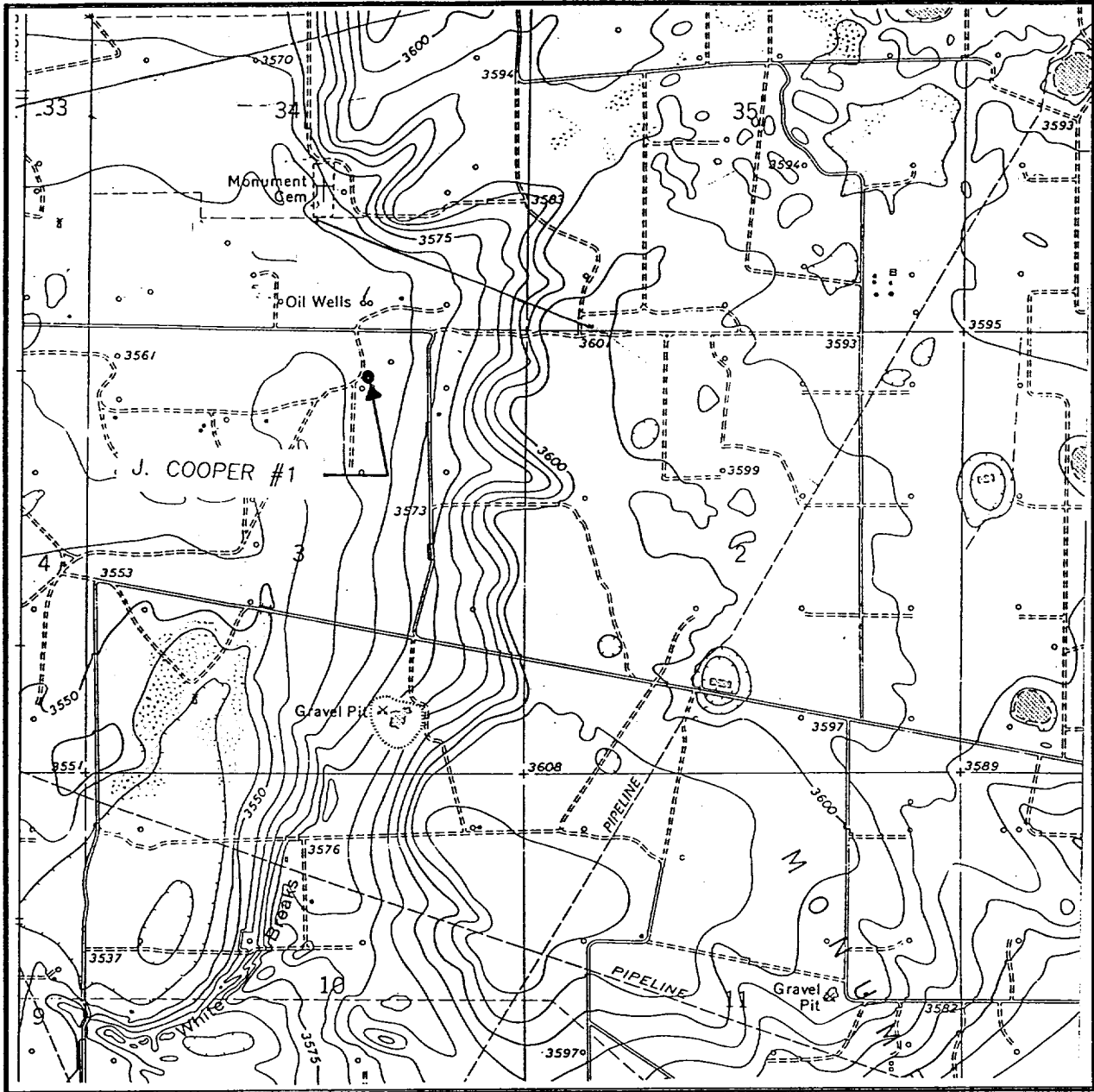
SCALE: 1" = 2 MILES

SEC. 3 TWP. 20-S RGE. 37-E  
 SURVEY N.M.P.M.  
 COUNTY LEA  
 DESCRIPTION 560' FNL & 1864' FEL  
 ELEVATION 3560  
 OPERATOR ME-TEX OIL & GAS, INC.  
 LEASE J. COOPER

**JOHN WEST ENGINEERING**  
**HOBBS, NEW MEXICO**  
**(505) 393-3117**

FEB 19 1998  
Received  
Hobbs  
OCD

# LOCATION VERIFICATION MAP



SCALE: 1" = 2000'

CONTOUR INTERVAL:  
HOBBS SW - 5'

SEC. 3 TWP. 20-S RGE. 37-E

SURVEY N.M.P.M.

COUNTY LEA

DESCRIPTION 560' FNL & 1864' FEL

ELEVATION 3560

OPERATOR ME-TEX OIL & GAS, INC.

LEASE J. COOPER

U.S.G.S. TOPOGRAPHIC MAP

HOBBS SW, N.M.

**JOHN WEST ENGINEERING  
HOBBS, NEW MEXICO**

**(505) 393-3117**

RECEIVED  
FEB 1998  
Hobbs  
OCD