

District I  
 PO Box 1980, Hobbs, NM 88241-1980  
 District II  
 811 S. 1st Street, Artesia, NM 88210-2834  
 District III  
 1000 Rio Brazos Rd., Aztec, NM 87410  
 District IV  
 2040 South Pacheco, Santa Fe, NM 87505

State of New Mexico  
 Energy, Minerals & Natural Resources Dept.

Form C-101  
 Revised October 18, 1994  
 Instructions on back  
 Submit to Appropriate District Office  
 State Lease - 6 Copies  
 Fee Lease - 5 Copies

**OIL CONSERVATION DIVISION**  
 2040 South Pacheco  
 Santa Fe, NM 87505

**AMENDED REPORT**

**APPLICATION FOR PERMIT TO DRILL, RE-ENTER, DEEPEN, PLUGBACK, OR ADD A ZONE**

<sup>1</sup> Operator name and Address		<sup>2</sup> OGRID Number
Chevron U.S.A. Inc. P.O. Box 1150 Midland, TX 79702		4323
		<sup>3</sup> API Number
		30-025-34209
<sup>4</sup> Property Code	<sup>5</sup> Property Name	<sup>6</sup> Well No.
22114	H. T. ORCUTT (NCT-E)	3

<sup>7</sup> Surface Location

UL or lot no.	Section	Township	Range	Lot. Idn	Feet from the	North/South Line	Feet from the	East/West line	County
E	2	20S	37E		1650	NORTH	330	WEST	LEA ✓

<sup>8</sup> Proposed Bottom Hole Location If Different From Surface

UL or lot no.	Section	Township	Range	Lot. Idn	Feet from the	North/South Line	Feet from the	East/West line	County
<sup>9</sup> Proposed Pool 1					<sup>10</sup> Proposed Pool 2				
MONUMENT; TUBB									

<sup>11</sup> Work Type Code	<sup>12</sup> Well Type Code	<sup>13</sup> Cable/Rotary	<sup>14</sup> Lease Type Code	<sup>15</sup> Ground Level Elevation
N	0	ROTARY	S	3600'
<sup>16</sup> Multiple	<sup>17</sup> Proposed Depth	<sup>18</sup> Formation	<sup>19</sup> Contractor	<sup>20</sup> Spud Date
NO	9000'	ABO	UNKNOWN	4/30/98

<sup>21</sup> Proposed Casing and Cement Program

Hole Size	Casing Size	Casing weight/foot	Setting Depth	Sacks of Cement	Estimated TOC
11"	8-5/8"	24	1500'	500	SURFACE
7-7/8"	5-1/2"	15.5	8300'	850	1300'

<sup>22</sup> Describe the proposed program. If this application is to DEEPEN or PLUG BACK give the data on the present productive zone and proposed new productive zone. Describe the blowout prevention program, if any. Use additional sheets if necessary

CHEVRON PROPOSES TO:  
 DRILL WITH BIT TO 1500', RUN 8-5/8" CSG. CMT WITH CLASS "C" TO SURFACE. NU DIVERTER.  
 DRILL WITH BIT TO 8300', RUN 5-1/2" CSG. CMT WITH CLASS "C". NU & TEST BOP.

MUD PROGRAM: SURFACE HOLE: 0' - 1500', FRESH WATER 8.4 PPG. PRODUCTION HOLE: 1500' - 8300',  
 CUT BRINE WATER 8.8 PPG.

<sup>23</sup> I hereby certify that the information given above is true and complete to the best of my knowledge and belief.

Signature: *J. K. Ripley*  
 Printed name: J. K. Ripley  
 Title: T. A.

<b>OIL CONSERVATION DIVISION</b>	
Approved by:	ORIGINAL SIGNED BY
Title:	<b>GARY WINK</b>
Approval Date:	<b>APR 28 1998</b>
Expiration Date:	

4/23/98

(915) 687-7148

*HC*

DISTRICT I  
P.O. Box 1890, Hobbs, NM 88241-1890

State of New Mexico

Energy, Minerals and Natural Resources Department

Form C-102  
Revised February 10, 1994  
Submit to Appropriate District Office  
State Lease - 4 Copies  
Fee Lease - 3 Copies

DISTRICT II  
P.O. Drawer 88, Artesia, NM 88211-0718

DISTRICT III  
1000 Rio Brazos Rd., Artec, NM 87410

OIL CONSERVATION DIVISION

P.O. Box 2088

Santa Fe, New Mexico 87504-2088

DISTRICT IV  
P.O. BOX 2088, SANTA FE, N.M. 87504-2088

AMENDED REPORT

WELL LOCATION AND ACREAGE DEDICATION PLAT

API Number 30-025-34209	Pool Code 47090	Pool Name MONUMENT; TUBB
Property Code 22114	Property Name H.T. ORCUTT NCT-E	Well Number 3
OGRID No. 4323	Operator Name CHEVRON U.S.A. PRODUCTION COMPANY	Elevation 3600'

Surface Location

UL or lot No.	Section	Township	Range	Lot Idn	Feet from the	North/South line	Feet from the	East/West line	County
E	2	20 S	37 E		1650	NORTH	330	WEST	LEA

Bottom Hole Location If Different From Surface

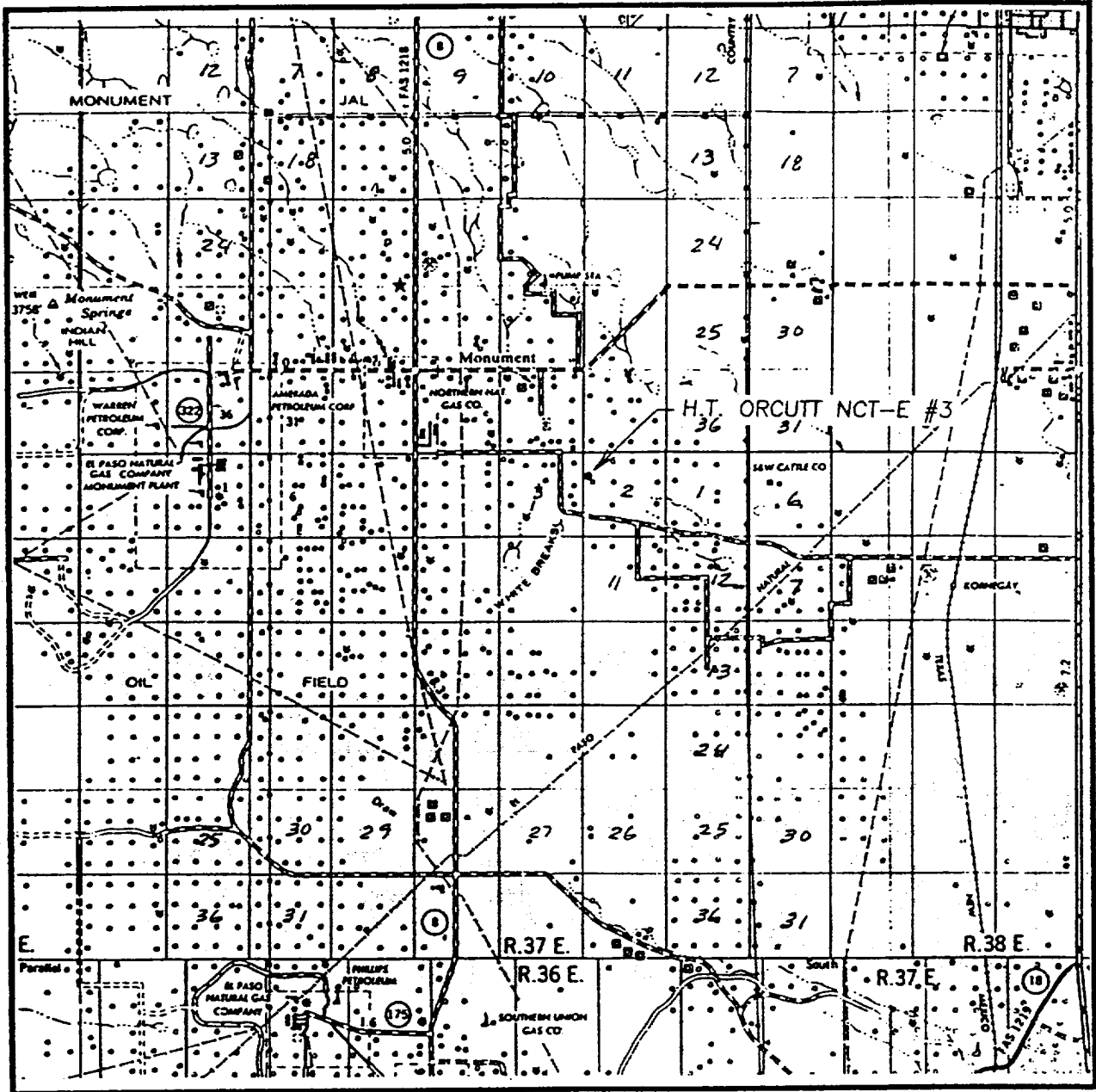
UL or lot No.	Section	Township	Range	Lot Idn	Feet from the	North/South line	Feet from the	East/West line	County

Dedicated Acres 80	Joint or Infill	Consolidation Code	Order No.
-----------------------	-----------------	--------------------	-----------

NO ALLOWABLE WILL BE ASSIGNED TO THIS COMPLETION UNTIL ALL INTERESTS HAVE BEEN CONSOLIDATED OR A NON-STANDARD UNIT HAS BEEN APPROVED BY THE DIVISION

LOT 4 40.68 AC. 1650' 330'	LOT 3 40.59 AC.	LOT 2 40.51 AC.	LOT 1 40.38 AC.	<p><b>OPERATOR CERTIFICATION</b></p> <p>I hereby certify the the information contained herein is true and complete to the best of my knowledge and belief.</p> <p style="text-align: right;"><i>J. K. Ripley</i></p> <p>Signature J. K. RIPLEY Printed Name T.A. Title Date 4/23/98</p>
NEW MEXICO EAST NAD 1927 Y=585515 X=840007 32°36'17.4" N 103°13'45.2" W				

# VICINITY MAP

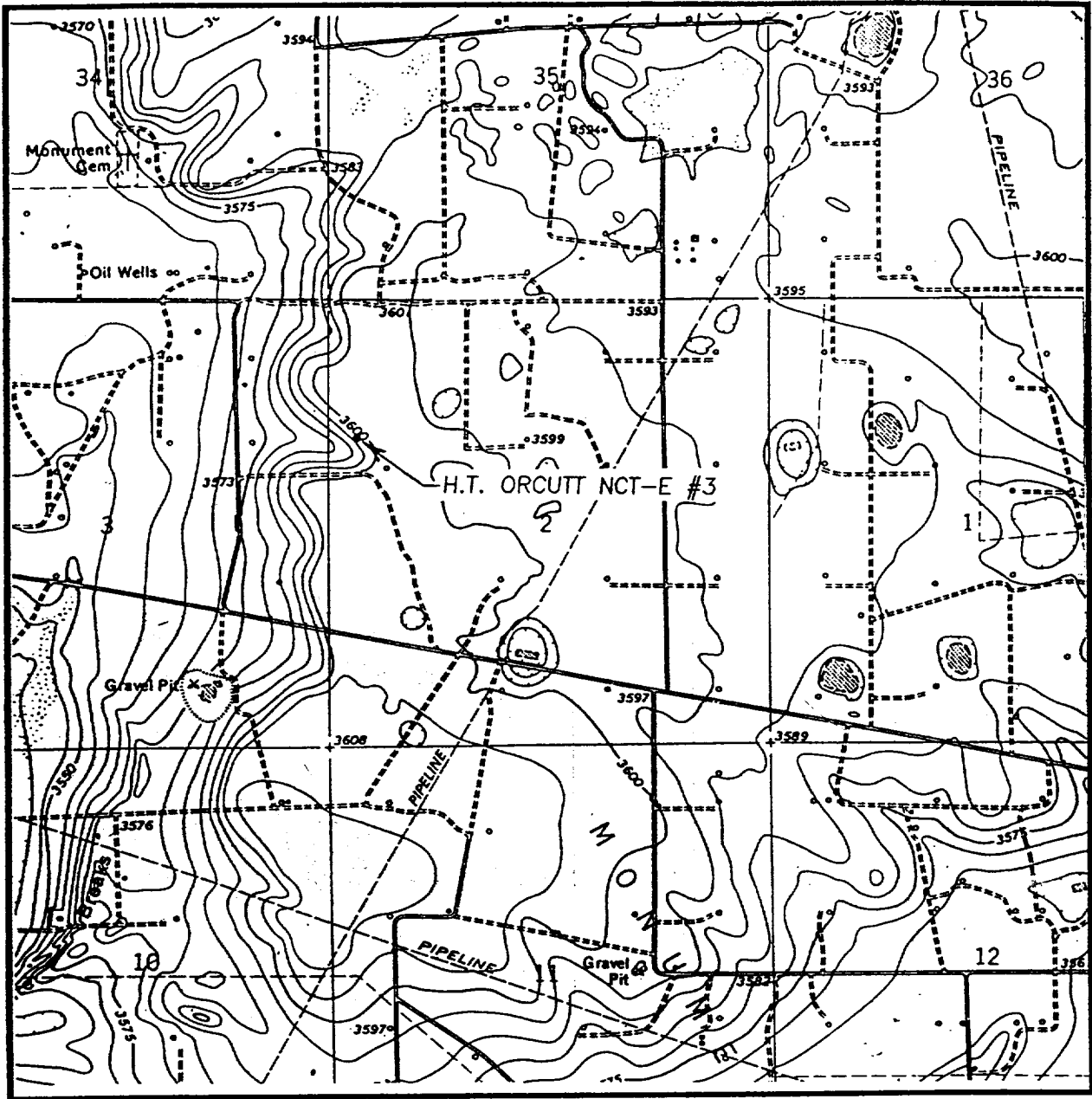


SCALE: 1" = 2 MILES

SEC. 2 TWP. 20-S RGE. 37-E  
 SURVEY N.M.P.M.  
 COUNTY LEA  
 DESCRIPTION 1650' FNL & 330' FWL  
 ELEVATION 3600'  
 OPERATOR CHEVRON U.S.A. PRODUCTION COMPANY  
 LEASE H.T. ORCUTT NCT-E

**JOHN WEST ENGINEERING**  
**HOBBS, NEW MEXICO**  
**(505) 393-3117**

# LOCATION VERIFICATION MAP



SCALE: 1" = 2000'

CONTOUR INTERVAL - 5'

SEC. 2 TWP. 20-S RGE. 37-E

SURVEY N.M.P.M.

COUNTY LEA

DESCRIPTION 1650' FNL & 330' FWL

ELEVATION 3600'

OPERATOR CHEVRON U.S.A. PRODUCTION COMPANY

LEASE H.T. ORCUTT NCT-E

U.S.G.S. TOPOGRAPHIC MAP

MONUMENT, NM

**JOHN WEST ENGINEERING  
HOBBS, NEW MEXICO**

**(505) 393-3117**