

District I  
PO Box 1980, Hobbs, NM 88241-1980

District II  
811 South First, Artesia, NM 88210

District III  
1000 Rio Brazos Rd., Aztec, NM 87410

District IV  
2040 South Pacheco, Santa Fe, NM 87505

State of New Mexico  
Energy, Minerals & Natural Resources Department

OIL CONSERVATION DIVISION  
2040 South Pacheco  
Santa Fe, NM 87505

Form C-101  
Revised October 18, 1994  
Instructions on back  
Submit to Appropriate District Office  
State Lease - 6 Copies  
Fee Lease - 5 Copies

AMENDED REPORT

APPLICATION FOR PERMIT TO DRILL, RE-ENTER, DEEPEN, PLUGBACK, OR ADD A ZONE

Operator Name and Address Matador Operating Company 8340 Meadow Road #158 Dallas, TX 75231		GRID Number 014245
Property Code 006602		Property Name Lea AQ State
		Well No. 12
API Number 30-025-34248		

Surface Location

UL or lot no.	Section	Township	Range	Lot Idn	Feet from the	North/South line	Feet from the	East/West Line	County
C	33	19S	35E		940	North	1654	West	Lea

Proposed Bottom Hole Location If Different From Surface

UL or lot no.	Section	Township	Range	Lot Idn	Feet from the	North/South line	Feet from the	East/West Line	County
Proposed Pool 1 Pearl San Andres, West					Proposed Pool 2				

Work Type Code N	Well Type Code 0	Cable/Rotary Rotary	Lease Type Code S	Ground Level Elevation 3709'
Multiple No	Proposed Depth 6025	Formation San Andres	Contractor Key Energy	Spud Date 1-20-98

Proposed Casing and Cement Program

Hole Size	Casing Size	Casing weight/foot	Setting Depth	Sacks of Cement	Estimated TOC
12-1/4	8-5/8	24#	425'	165 sx	Surface
7-7/8	5-1/2	15.5#	6025'	800 sx	Surface

Describe the proposed program. If this application is to DEEPEN or PLUG BACK give the data on the present productive zone and proposed new productive zone. Describe the blowout prevention program, if any. Use additional sheets if necessary.

Drill 6025' San Andres test. Drill 12-1/4" hole to 425' and run 8-5/8" casing. Circulate cement to surface. NU double ram BOP and test to 1000 psi. Drill 7-7/8" hole to TD of 6025'. Log well and run 5-1/2" casing and cement to surface.

Permit Expires 1 Year From Approval  
Date Unless Drilling Underway

I hereby certify that the information given above is true and complete to the best of my knowledge and belief.		OIL CONSERVATION DIVISION	
Signature: <i>John W. Bell</i>	Printed name: John W. Bell	Title: Drilling Manager	Approval Date: 1-20-98
Date: 1-7-98	Phone: 214-987-7144	Expiration Date:	
Conditions of Approval: Attached: <input type="checkbox"/>		Title: ORIGINAL SIGNED BY CHRIS WILLIAMS DISTRICT SUPERVISOR	

J  
C  
J

9

**DISTRICT I**  
 P. O. Box 1980  
 Hobbs, NM 88241-1980

State of New Mexico  
 Energy, Minerals, and Natural Resources Department

Form C-102  
 Revised 02-10-94

Instructions on back

**DISTRICT II**  
 P. O. Drawer DD  
 Artesia, NM 88211-0719

**OIL CONSERVATION DIVISION**  
 P. O. Box 2088  
 Santa Fe, New Mexico 87504-2088

Submit to the Appropriate  
 District Office  
 State Lease - 4 copies  
 Fee Lease - 3 copies

**DISTRICT III**  
 1000 Rio Brazos Rd.  
 Aztec, NM 87410

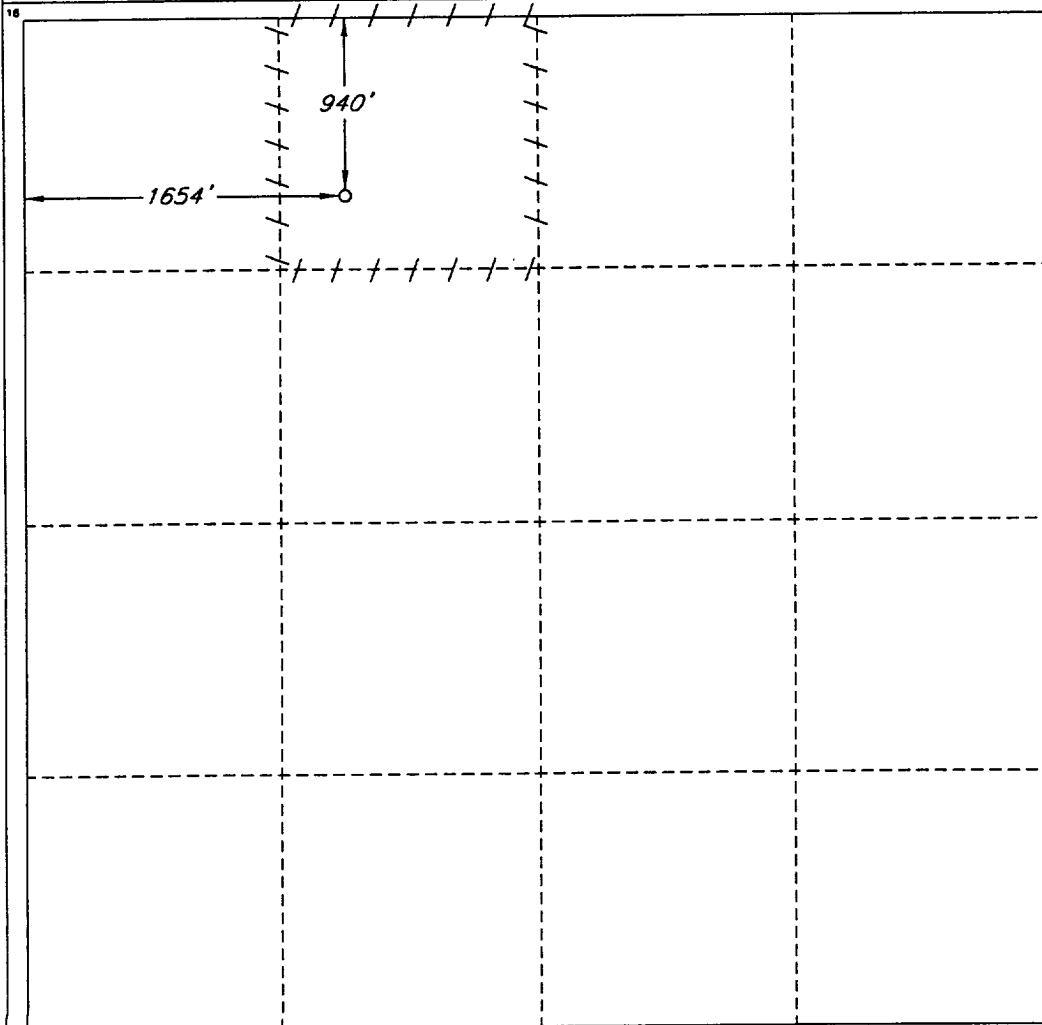
AMENDED REPORT

**DISTRICT IV**  
 P. O. Box 2088  
 Santa Fe, NM 87507-2088

**WELL LOCATION AND ACREAGE DEDICATION PLAT**

<sup>1</sup> API Number 30-025-34248		<sup>2</sup> Pool Code 49820		<sup>3</sup> Pool Name Pearl San Andres, West					
<sup>4</sup> Property Code <del>00602</del> 6602		<sup>5</sup> Property Name LEA AQ STATE						<sup>6</sup> Well Number 12	
<sup>7</sup> OGRID No. 014245		<sup>8</sup> Operator Name MATADOR OPERATING COMPANY						<sup>9</sup> Elevation 3709'	
<sup>10</sup> SURFACE LOCATION									
UL or lot no. C	Section 33	Township 19 SOUTH	Range 35 EAST, N.M.P.M.	Lot Ida	Feet from the 940'	North/South line NORTH	Feet from the 1654'	East/West line WEST	County LEA
<sup>11</sup> BOTTOM HOLE LOCATION IF DIFFERENT FROM SURFACE									
UL or lot no.	Section	Township	Range	Lot Ida	Feet from the	North/South line	Feet from the	East/West line	County
<sup>12</sup> Dedicated Acres 40		<sup>13</sup> Joint or Infill		<sup>14</sup> Consolidation Code		<sup>15</sup> Order No.			

NO ALLOWABLE WELL BE ASSIGNED TO THIS COMPLETION UNTIL ALL INTERESTS HAVE BEEN CONSOLIDATED OR A NON-STANDARD UNIT HAS BEEN APPROVED BY THE DIVISION



**OPERATOR CERTIFICATION**

I hereby certify that the information contained herein is true and complete to the best of my knowledge and belief.

Signature

Printed Name

John W. Bell

Title

Drilling Manager

Date

1-7-98

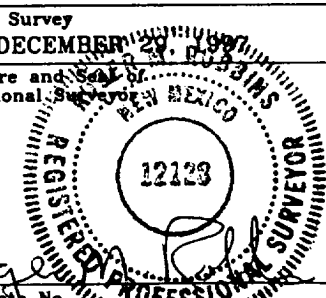
**SURVEYOR CERTIFICATION**

I hereby certify that the well location shown on this plat was plotted from field notes of actual surveys made by me or under my supervision, and that the same is true and correct to the best of my belief.

Date of Survey

DECEMBER 29, 1997

Signature and Seal of Professional Surveyor

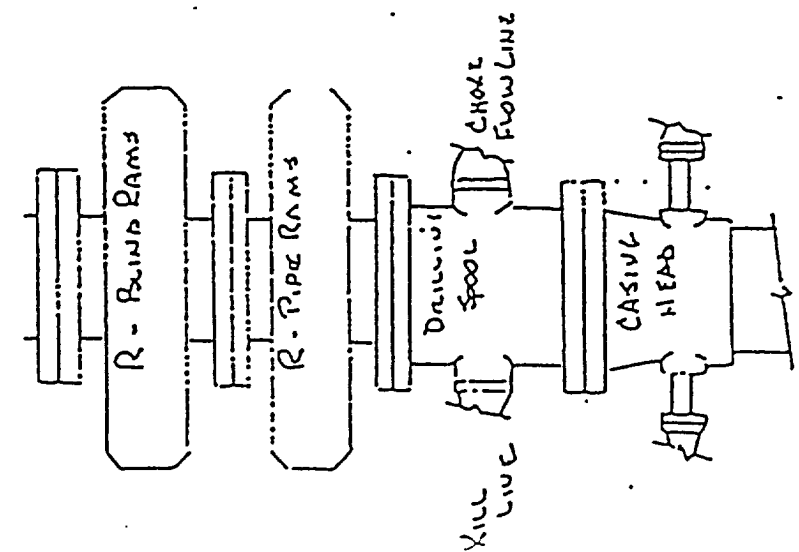
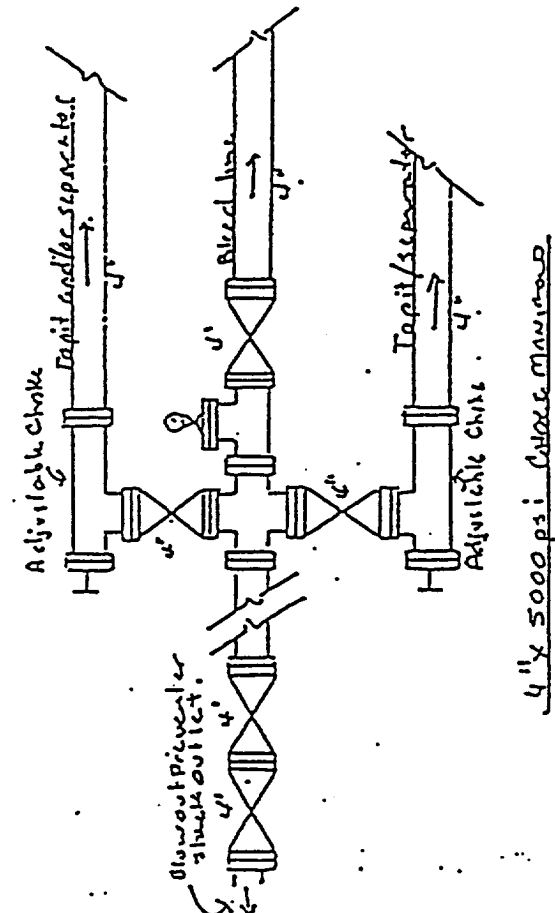
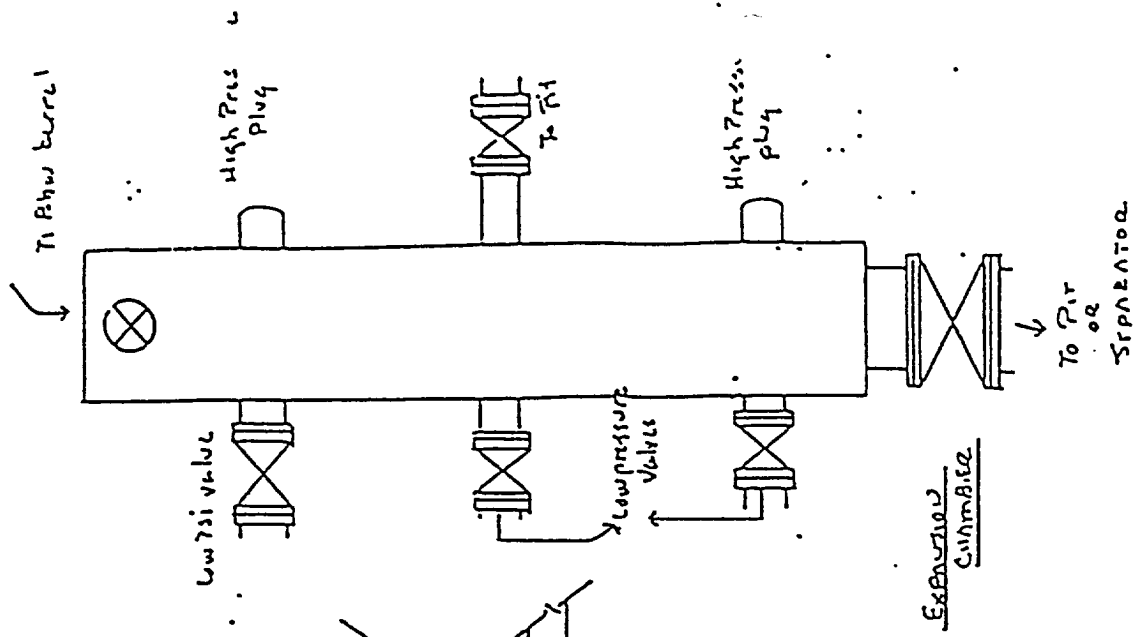


Certificate No.

ROGER M. ROBBINS P.S. #12128

JOB #56004 / 71 SW / V.H.B.

Blowout Preventer  
 Matador Operating Company  
 Lea AQ State #12  
 940 FNL, 1654 FWL  
 Sec 33, 19S-35E  
 Lea County, New Mexico



5000 PSI  
 WORKING PRESSURE