

District I
 PO Box 1980, Hobbs, NM 88241-1980
 District II
 PO Drawer DD, Artesia, NM 88211-0719
 District III
 1000 Rio Brazos Rd., Aztec, NM 87410
 District IV
 PO Box 2088, Santa Fe, NM 87504-2088

State of New Mexico
 Energy, Minerals & Natural Resources Department

OIL CONSERVATION DIVISION
 PO Box 2088
 Santa Fe, NM 87504-2088

Form C-101
 Revised February 10, 1994
 Instructions on back
 Submit to Appropriate District Office
 State Lease - 6 Copies
 Fee Lease - 5 Copies

AMENDED REPORT

APPLICATION FOR PERMIT TO DRILL, RE-ENTER, DEEPEN, PLUGBACK, OR ADD A ZONE

Operator Name and Address. CHEVRON U.S.A., INC. P. O. BOX 1150 MIDLAND, TX 79702		OGRID Number 4323
Property Code 20070		API Number 30-025-34323
		Well No. 19
Property Name MONUMENT "23" STATE		

Permit Expires 1 Year From Approval
 Date Unless Drilling Underway

Surface Location

UL or lot no.	Section	Township	Range	Lot Ida	Feet from the	North/South line	Feet from the	East/West line	County
M	23	19S	36E		753	SOUTH	637	WEST	LEA

Proposed Bottom Hole Location If Different From Surface

UL or lot no.	Section	Township	Range	Lot Ida	Feet from the	North/South line	Feet from the	East/West line	County
Proposed Pool 1 MONUMENT; ABO, NORTH					46980	46970	Proposed Pool 2		

Work Type Code N	Well Type Code O	Cable/Rotary ROTARY	Lease Type Code S	Ground Level Elevation 3703'
Multiple NO	Proposed Depth 8000'	Formation ABO	Contractor UNKNOWN	Spud Date 3/4/98

Proposed Casing and Cement Program

Hole Size	Casing Size	Casing weight/foot	Setting Depth	Sacks of Cement	Estimated TOC
11"	8-5/8"	24	1550'	500	SURFACE
7-7/8"	5-1/2"	15.5	7250'	850	1350'

Describe the proposed program. If this application is to DEEPEN or PLUG BACK give the data on the present productive zone and proposed new productive zone. Describe the blowout prevention program, if any. Use additional sheets if necessary.

CHEVRON PROPOSES TO:
 DRILL WITH BIT TO 1550', RUN 8-5/8" CSG. CMT W/CLASS "C" TO SURFACE. NU DIVERTER.
 DRILL WITH BIT TO 7250', RUN 5-1/2" CSG. CMT W/CLASS "C". NU & TEST BOP.
 MUD PROGRAM: SURFACE HOLE: 0' - 1550', FRESH WATER 8.4 PPG
 PRODUCTION HOLE: 1550' - 8000', CUT BRINE WATER 8.8 PPG

*****PLEASE EXPEDITE*****

I hereby certify that the information given above is true and complete to the best of my knowledge and belief. Signature: <i>J. K. Ripley</i>		OIL CONSERVATION DIVISION	
Printed name: J. K. RIPLEY		Approved by: ORIGINAL SIGNED BY GARY WINK	
Title: TECHNICAL ASSISTANT		Title: FIELD REP. II	
Date: 2/25/98	Phone: (915) 687-7148	Approval Date: MAR 04 1998	Expiration Date:
Conditions of Approval: Attached <input type="checkbox"/>			

15015

DISTRICT I
P.O. Box 1980, Hobbs, NM 88241-1980

State of New Mexico

Energy, Minerals and Natural Resources Department

Form C-102
Revised February 10, 1994
Submit to Appropriate District Office
State Lease - 4 Copies
Fee Lease - 3 Copies

DISTRICT II
P.O. Drawer DD, Artesia, NM 88211-0719

DISTRICT III
1000 Rio Brazos Rd., Aztec, NM 87410

OIL CONSERVATION DIVISION

P.O. Box 2088

Santa Fe, New Mexico 87504-2088

DISTRICT IV
P.O. BOX 2088, SANTA FE, N.M. 87504-2088

AMENDED REPORT

WELL LOCATION AND ACREAGE DEDICATION PLAT

API Number 30-025-34323		Pool Code 46980	Pool Name MONUMENT; ABO, NORTH	
Property Code 20070	Property Name MONUMENT 23 STATE			Well Number 19
OGRID No. 4323	Operator Name CHEVRON U.S.A. PRODUCTION COMPANY			Elevation 3703'

Surface Location

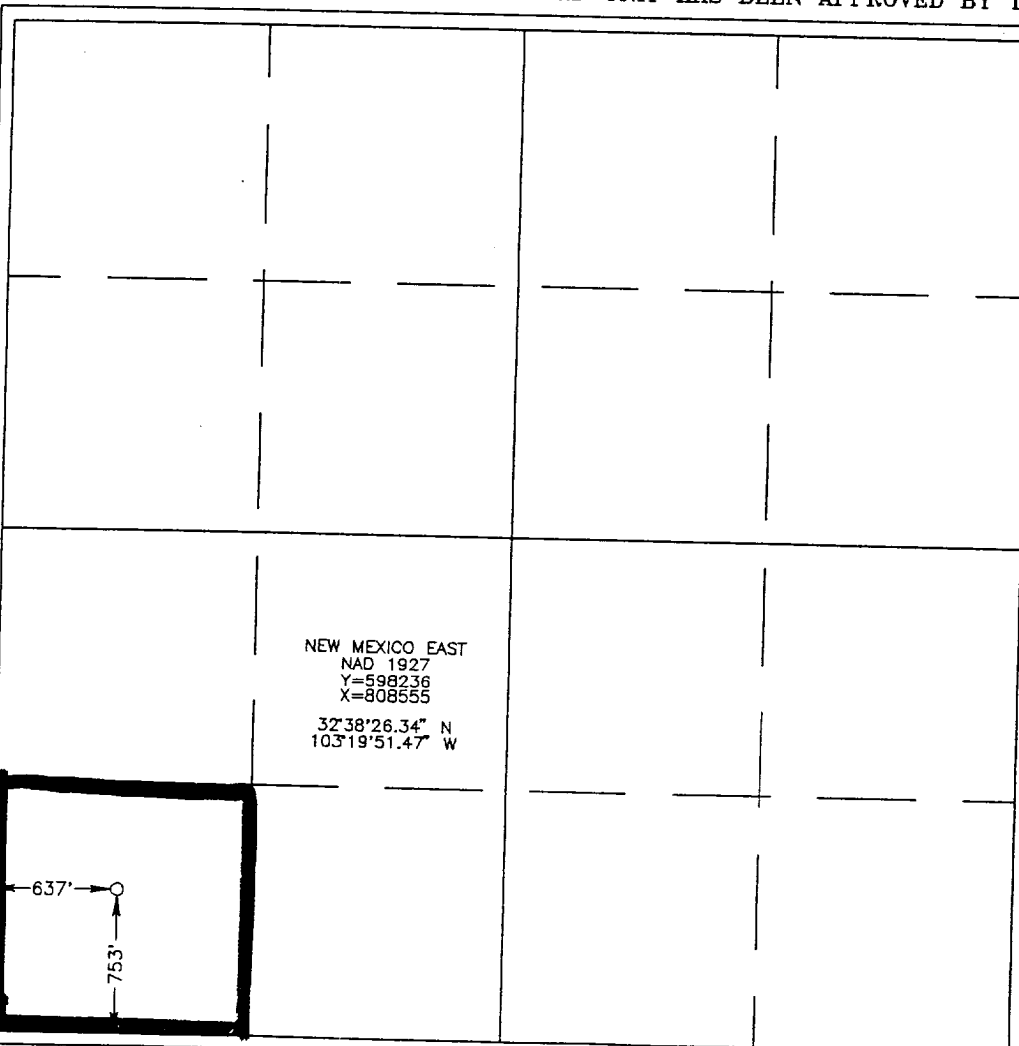
UL or lot No.	Section	Township	Range	Lot Idn	Feet from the	North/South line	Feet from the	East/West line	County
M	23	19 S	36 E		753	SOUTH	637	WEST	LEA

Bottom Hole Location If Different From Surface

UL or lot No.	Section	Township	Range	Lot Idn	Feet from the	North/South line	Feet from the	East/West line	County

Dedicated Acres 40	Joint or Infill	Consolidation Code	Order No.
-----------------------	-----------------	--------------------	-----------

NO ALLOWABLE WILL BE ASSIGNED TO THIS COMPLETION UNTIL ALL INTERESTS HAVE BEEN CONSOLIDATED OR A NON-STANDARD UNIT HAS BEEN APPROVED BY THE DIVISION



OPERATOR CERTIFICATION

I hereby certify the the information contained herein is true and complete to the best of my knowledge and belief.

J. K. Ripley
Signature
J. K. RIPLEY
Printed Name
T.A.
Title
2/25/98
Date

SURVEYOR CERTIFICATION

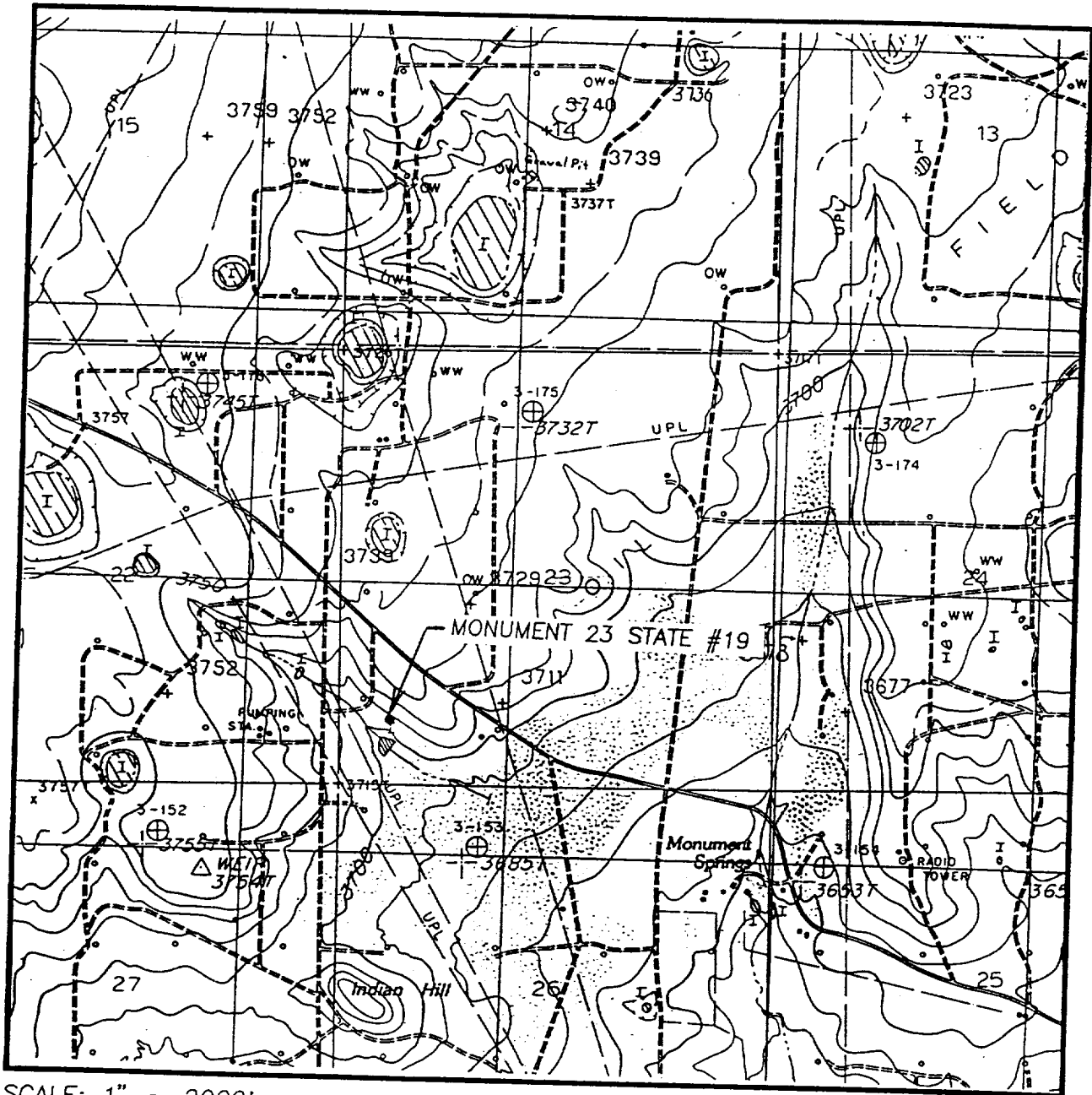
I hereby certify that the well location shown on this plat was plotted from field notes of actual surveys made by me or under my supervision, and that the same is true and correct to the best of my belief.

FEBRUARY 9, 1998
Date Surveyed
CDG

Signature & Seal of Professional Surveyor
Ronald F. Edson
NEW MEXICO
2-19-98
98-11-0199

Certificate No. RONALD F. EDSON 3239
PROFESSIONAL SURVEYOR EDSON 12641

LOCATION VERIFICATION MAP



SCALE: 1" = 2000'

CONTOUR INTERVAL - 10'
SUPPLEMENTAL - 5'

SEC. 23 TWP. 19-S RGE. 36-E

SURVEY N.M.P.M.

COUNTY LEA

DESCRIPTION 753' FSL & 637' FWL

ELEVATION 3703'

OPERATOR CHEVRON U.S.A. PRODUCTION COMPANY

LEASE MONUMENT 23 STATE

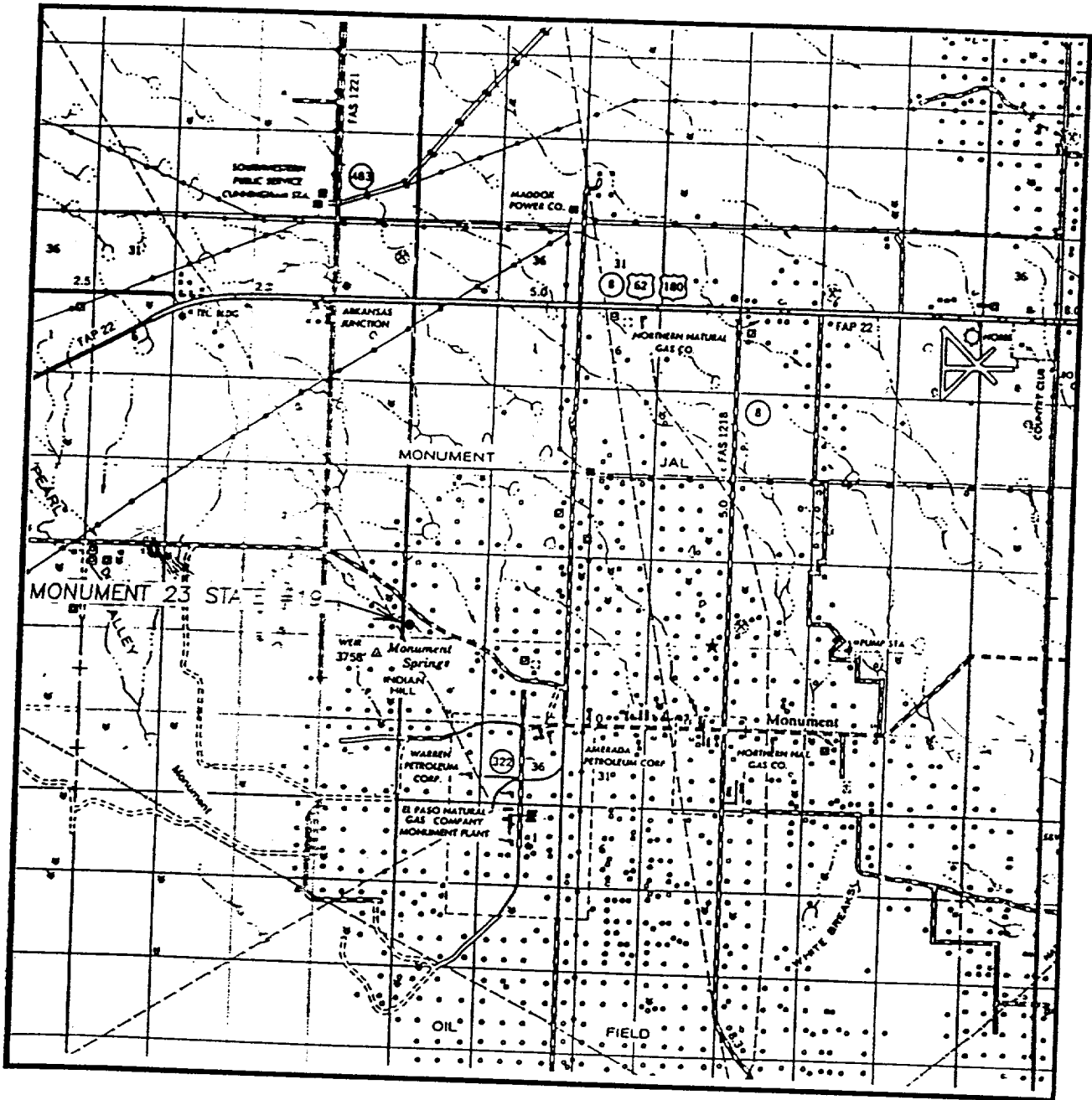
U.S.G.S. TOPOGRAPHIC MAP

MONUMENT NORTH, NM

**JOHN WEST ENGINEERING
HOBBS, NEW MEXICO**

(505) 393-3117

VICINITY MAP



SCALE: 1" = 2 MILES

SEC. 23 TWP. 19-S R. 36-E

SURVEY N.M.P.M.

COUNTY EA

DESCRIPTION 753' FSL & 637' FWL

ELEVATION 3703'

OPERATOR CHEVRON U.S.A. PRODUCTION COMPANY

LEASE MONUMENT 23 STATE

**JOHN WEST ENGINEERING
HOBBS, NEW MEXICO**

(505) 393-3117