

District I
 PO Box 1980, Hobbs, NM 88241-1980
 District II
 811 S. 1st Street, Artesia, NM 88210-2834
 District III
 1000 Rio Brazos Rd., Aztec, NM 87410
 District IV
 2040 South Pacheco, Santa Fe, NM 87505

State of New Mexico
 Energy, Minerals & Natural Resources Department

OIL CONSERVATION DIVISION
 2040 South Pacheco
 Santa Fe, NM 87505

Form C-101
 Revised October 18, 1994
 Instructions on back
 Submit to Appropriate District Office
 State Lease - 6 Copies
 Fee Lease - 5 Copies

AMENDED REPORT

APPLICATION FOR PERMIT TO DRILL, RE-ENTER, DEEPEN, PLUGBACK, OR ADD A ZONE

¹ Operator name and Address Chevron U.S.A. Inc. P.O. Box 1150 Midland, TX 79702		² OGRID Number 4323
⁴ Property Code 18927		³ API Number 30-025-34470
⁵ Property Name MONUMENT "12" STATE		⁶ Well No. 25

⁷ Surface Location

UL or lot no.	Section	Township	Range	Lot. Idn	Feet from the	North/South Line	Feet from the	East/West line	County
D	12	19S	36E		758	NORTH	990	WEST	LEA

⁸ Proposed Bottom Hole Location If Different From Surface

UL or lot no.	Section	Township	Range	Lot. Idn	Feet from the	North/South Line	Feet from the	East/West line	County

⁹ Proposed Pool 1 MONUMENT; ABO, NORTH 46980	¹⁰ Proposed Pool 2
--	-------------------------------

¹¹ Work Type Code N	¹² Well Type Code 0	¹³ Cable/Rotary ROTARY	¹⁴ Lease Type Code S	¹⁵ Ground Level Elevation 3735'
¹⁶ Multiple NO	¹⁷ Proposed Depth 8000'	¹⁸ Formation ABO	¹⁹ Contractor UNKNOWN	²⁰ Spud Date 8/6/98

²¹ Proposed Casing and Cement Program

Hole Size	Casing Size	Casing weight/foot	Setting Depth	Sacks of Cement	Estimated TOC
11"	8-5/8"	24	1525'	500	SURFACE
7-7/8"	5-1/2"	15.5	8000'	850	1325'

²² Describe the proposed program. If this application is to DEEPEN or PLUG BACK give the data on the present productive zone and proposed new productive zone. Describe the blowout prevention program, if any. Use additional sheets if necessary

CHEVRON PROPOSES TO:
 DRILL WITH BIT TO 1525', RUN 8-5/8" CSG. CMT W/CLASS "C" TO SURF. NU DIVERTER.
 DRILL WITH BIT TO 8000', RUN 5-1/2" CSG. CMT W/CLASS "C". NU & TEST BOP.

MUD PROGRAM: SURFACE HOLE: 0' - 1525', FRESH WATER 8.4 PPG
 PRODUCTION HOLE: 1525' - 8000', CUT BRINE WATER 8.8 PPG

*****PLEASE EXPEDITE*****

²³ I hereby certify that the information given above is true and complete to the best of my knowledge and belief.

Signature: *J. K. Ripley*

Printed name: J. K. Ripley

Title: T. A.

OIL CONSERVATION DIVISION	
Approved by: ORIGINAL SIGNED BY CHRIS WILLIAMS DISTRICT I SUPERVISOR	
Approval Date: JUL 29 1998	Expiration Date:

7/23/98

(915)687-7148

MS
5/15

3/10
2/P

DISTRICT I
P.O. Box 1980, Hobbs, NM 88241-1980

State of New Mexico

Energy, Minerals and Natural Resources Department

Form C-102
Revised February 10, 1994
Submit to Appropriate District Office
State Lease - 4 Copies
Fee Lease - 3 Copies

DISTRICT II
P.O. Drawer DD, Artesia, NM 88211-0719

DISTRICT III
1000 Rio Brazos Rd., Antec, NM 87410

DISTRICT IV
P.O. BOX 2088, SANTA FE, N.M. 87504-2088

OIL CONSERVATION DIVISION

P.O. Box 2088
Santa Fe, New Mexico 87504-2088

AMENDED REPORT

WELL LOCATION AND ACREAGE DEDICATION PLAT

API Number 30-025-34470		Pool Code 46980	Pool Name MONUMENT; ABO, NORTH
Property Code 18927	Property Name MONUMENT "12" STATE		Well Number 25
OGRID No. 4323	Operator Name CHEVRON U.S.A. PRODUCTION COMPANY		Elevation 3735

Surface Location

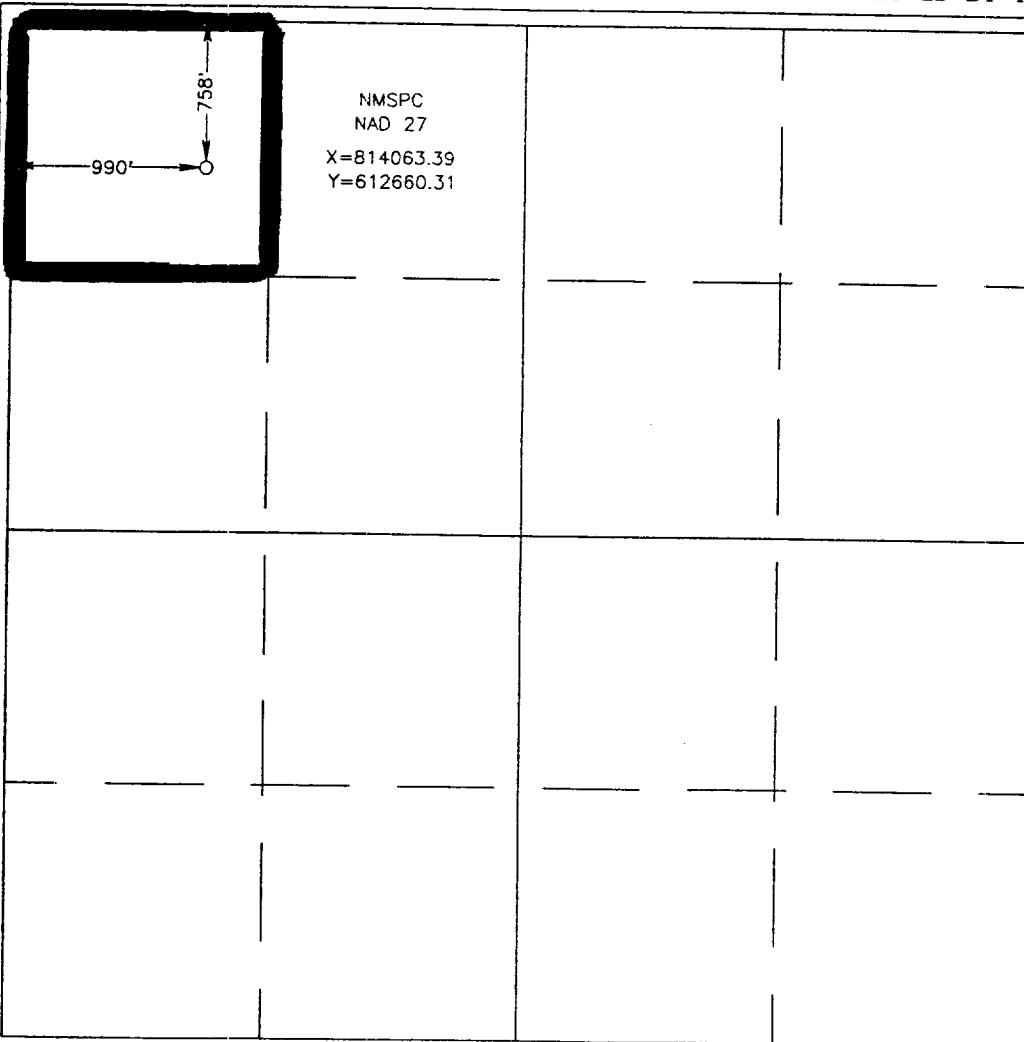
UL or lot No.	Section	Township	Range	Lot Idn	Feet from the	North/South line	Feet from the	East/West line	County
D	12	19 S	36 E		758	NORTH	990	WEST	LEA

Bottom Hole Location If Different From Surface

UL or lot No.	Section	Township	Range	Lot Idn	Feet from the	North/South line	Feet from the	East/West line	County

Dedicated Acres 40	Joint or Infill	Consolidation Code	Order No.
-----------------------	-----------------	--------------------	-----------

NO ALLOWABLE WILL BE ASSIGNED TO THIS COMPLETION UNTIL ALL INTERESTS HAVE BEEN CONSOLIDATED OR A NON-STANDARD UNIT HAS BEEN APPROVED BY THE DIVISION



OPERATOR CERTIFICATION

I hereby certify the the information contained herein is true and complete to the best of my knowledge and belief.

J. K. Ripley
Signature
J. K. RIPLEY
Printed Name
T.A.
Title
7/23/98
Date

SURVEYOR CERTIFICATION

I hereby certify that the well location shown on this plat was plotted from field notes of actual surveys made by me or under my supervision, and that the same is true and correct to the best of my belief.

JULY 17, 1998

Date Surveyed
Signature of Professional Surveyor
Professional Surveyor
DMCC

Ronald D. Edson
Professional Surveyor
NEW MEXICO
3239
88-11-1000
7-21-98

Certificate No. RONALD D. EDSON 3239
GARY EDSON 12641
W. McDONALD 12185

16/8/16