

DISTRICT I  
 P.O. Box 1980, Hobbs, NM 88241-1980  
 DISTRICT II  
 P.O. Box Drawer DD, Artesia, NM 88211-0719  
 DISTRICT III  
 1000 Rio Brazos Rd., Aztec, NM 87410  
 DISTRICT IV  
 P.O. Box 2088, Santa Fe, NM 87504-2088

State of New Mexico  
 Energy, Minerals and Natural Resources Department  
**OIL CONSERVATION DIVISION**  
 P.O. Box 2088  
 Santa Fe, New Mexico 87504-2088

Form C-101  
 Revised February 10, 1994  
 Instructions on back  
 Submit to Appropriate District Office  
 State Lease - 6 Copies  
 Fee Lease - 5 Copies  
 AMENDED REPORT

**APPLICATION FOR PERMIT TO DRILL, RE-ENTER, DEEPEN, PLUGBACK, OR ADD A ZONE:**

<sup>1</sup> Operator Name and Address TEXACO EXPLORATION & PRODUCTION INC. 205 E. Bender, HOBBS, NM 88240		<sup>2</sup> OGRID Number 022351
<sup>4</sup> Property Code 011127	<sup>5</sup> Property Name VAN ET TEN L.	<sup>3</sup> API Number 30 025 34528
		<sup>6</sup> Well No. 19

<sup>7</sup> Surface Location									
Ul or lot no.	Section	Township	Range	Lot.Idn	Feet From The	North/South Line	Feet From The	East/West Line	County
O	9	20S	37E		467	SOUTH	1650	EAST	LEA

<sup>8</sup> Proposed Bottom Hole Location If Different From Surface									
Ul or lot no.	Section	Township	Range	Lot.Idn	Feet From The	North/South Line	Feet From The	East/West Line	County
<sup>9</sup> Proposed Pool 1 Monument Paddock/Weir Blinebry					<sup>10</sup> Proposed Pool 2				

<sup>11</sup> Work Type Code P	<sup>12</sup> WellType Code O	<sup>13</sup> Rotary or C.T. ROTARY	<sup>14</sup> Lease Type Code P	<sup>15</sup> Ground Level Elevation 3544 GIL
<sup>16</sup> Multiple No	<sup>17</sup> Proposed Depth 7500'	<sup>18</sup> Formation Blinebry/Paddock	<sup>19</sup> Contractor	<sup>20</sup> Spud Date 4/15/98

<sup>21</sup> Proposed Casing and Cement Program					
SIZE OF HOLE	SIZE OF CASING	WEIGHT PER FOOT	SETTING DEPTH	SACKS OF CEMENT	EST. TOP
11"	8-5/8"	24#	1150'	450 SX, CIRC.	
7-7/8"	5-1/2"	15.5#LS65	1125'		
7-7/8"	5-1/2"	15.5#K55	7500'	1320 SX, CIRC.	

<sup>22</sup> Describe the proposed program. If this application is to DEEPEN or PLUG BACK give the data on the present productive zone and proposed new productive zone. Describe the blowout prevention program, if any. Use additional sheets if necessary.

Texaco intends to recomplate to the Paddock/Blinebry formations. The intended procedure is as follows:

- Instl BOP. Log w/CBL fr 6000-2500'.
- RU full lubricator w/packoff. TIH w/csg gun & perf 5528-5686'.
- TIH w/sonic hammer tool. Acid wsh perf. After wshng top perf drop dn to 5600'. Set pkr & drop bar & shear sleeve. Pmp 2100 gals 15% HCL. Fish w/35 bbls 2% KCL. Flow or swab back load.
- Prod from Blinebry until prod rates stabilize. SI 3 days prior to Paddock compl.
- Instl BOP. Set CIBP above Blinebry perms @ 5475'. Perf 5158-5216'. Dump 35' cmt on top of plug.
- TIH w/TP, pkr & tbgt to surf. Spot acid acr perms. Acidize perms w/1000 gals 15% NEFE HCL.
- SI 2 hr. Flow or swab back load. If well will not flow, rel pkr. TIH w/pmpng eqpt & place well on test.
- Obtain DHC permit to commingle Blinebry w/Paddock after rates stabilize from Paddock.
- MIRU PU & pull prod eqpt. TIH W/bit, DC's & 2 7/8" tbgt. RU rev unit & drill up CIBP. TIH w/pmpng eqpt & place well on test.

**Permit Expires 1 Year From Approval Date Unless Drilling Intended Plugback**

<sup>23</sup> I hereby certify that the rules and regulations of the Oil Conservation Division have been complied with and that the information given above is true and complete to the best of my knowledge and belief.

Signature *J. Denise Leake*  
 Printed Name J. Denise Leake  
 Title Engineering Assistant  
 Date 3/31/99  
 Telephone 397-0405

<b>OIL CONSERVATION DIVISION</b>	
Approved By: <i>ORIGINA SIGNED BY DENISE WILLIAMS</i>	
Title:	
Approval Date: 3/31/99	Expiration Date:
Conditions of Approval: Attached <input type="checkbox"/>	

DISTRICT I

P.O. Box 1980, Hobbs, NM 88241-1980

DISTRICT II

P.O. Box Drawer DD, Artesia, NM 88211-0719

DISTRICT III

1000 Rio Brazos Rd., Aztec, NM 87410

DISTRICT IV

P.O. Box 2088, Santa Fe, NM 87504-2088

State of New Mexico  
Energy, Minerals and Natural Resources Department

OIL CONSERVATION DIVISION

P.O. Box 2088  
Santa Fe, New Mexico 87504-2088

Form C-102

Revised February 10, 1994

Instructions on back

Submit to Appropriate District Office

State Lease - 4 Copies

Fee Lease - 3 Copies

AMENDED REPORT

WELL LOCATION AND ACREAGE DEDICATION PLAT

<sup>1</sup> API Number 30 025 34528		<sup>2</sup> Pool Code 47080		<sup>3</sup> Pool Name MONUMENT PADDOCK	
<sup>4</sup> Property Code 011127		<sup>5</sup> Property Name VAN ETTEN L.			<sup>6</sup> Well No. 19
<sup>7</sup> OGRID Number 022351		<sup>8</sup> Operator Name TEXACO EXPLORATION & PRODUCTION INC.			<sup>9</sup> Elevation 3544 GL

<sup>10</sup> Surface Location

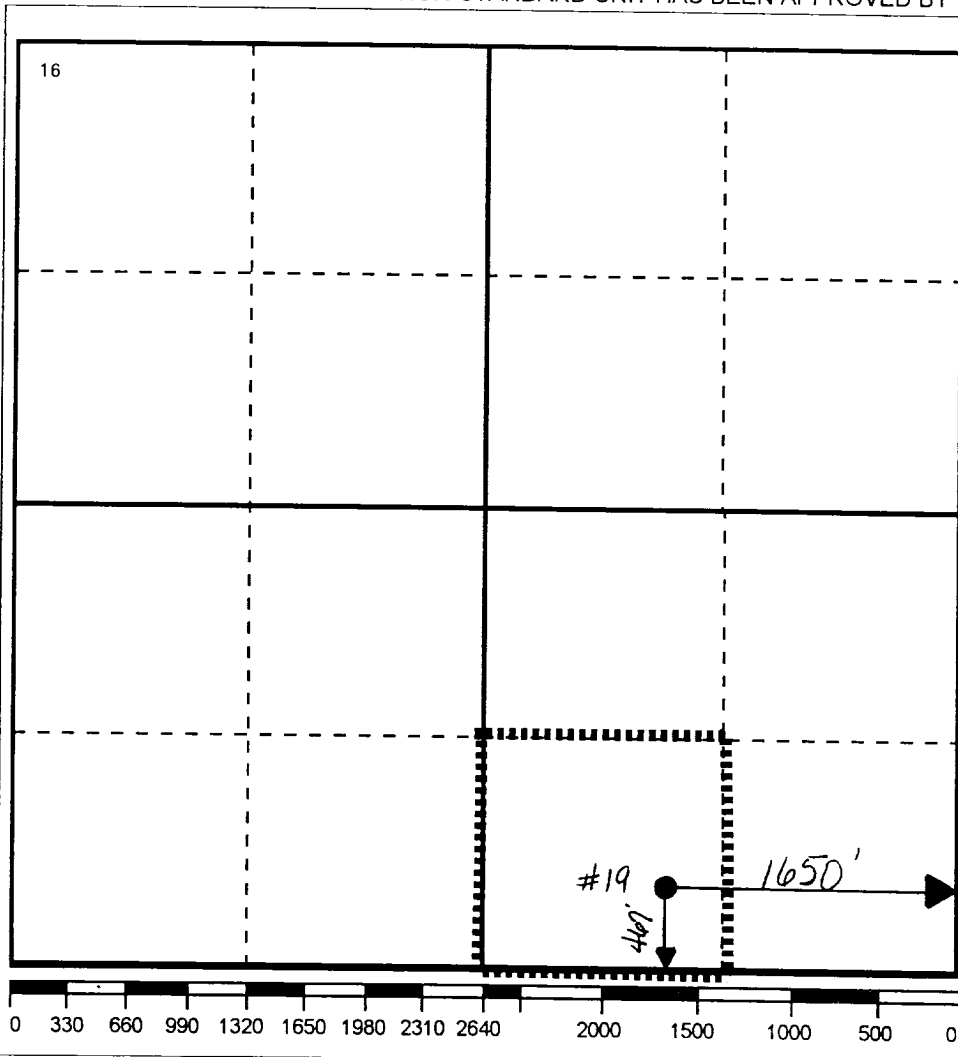
Ul or lot no.	Section	Township	Range	Lot.Idn	Feet From The	North/South Line	Feet From The	East/West Line	County
0	9	20S	37E		467	SOUTH	1650	EAST	LEA

<sup>11</sup> Bottom Hole Location If Different From Surface

Ul or lot no.	Section	Township	Range	Lot.Idn	Feet From The	North/South Line	Feet From The	East/West Line	County

<sup>12</sup> Dedicated Acres 40	<sup>13</sup> Joint or Infill No	<sup>14</sup> Consolidation Code	<sup>15</sup> Order No.
-------------------------------------	-------------------------------------	----------------------------------	-------------------------

NO ALLOWABLE WILL BE ASSIGNED TO THIS COMPLETION UNTIL ALL INTERESTS HAVE BEEN CONSOLIDATED OR A NON-STANDARD UNIT HAS BEEN APPROVED BY THE DIVISION



**17 OPERATOR CERTIFICATION**  
I hereby certify that the information contained herein is true and complete to the best of my knowledge and belief

Signature: *J. Denise Leake*  
Printed Name: J. Denise Leake  
Position: Engineering Assistant  
Date: 3/31/99

**18 SURVEYOR CERTIFICATION**  
I hereby certify that the well location shown on this plat was plotted from field notes of actual surveys made by me or under my supervision, and that the same is true and correct to the best of my knowledge and belief.

Date Surveyed:  
Signature & Seal of Professional Surveyor:  
Certificate No.:

DISTRICT I  
P.O. Box 1980, Hobbs, NM 88241-1980  
DISTRICT II  
P.O. Box Drawer DD, Artesia, NM 88211-0719  
DISTRICT III  
1000 Rio Brazos Rd., Aztec, NM 87410  
DISTRICT IV  
P.O. Box 2088, Santa Fe, NM 87504-2088

State of New Mexico  
Energy, Minerals and Natural Resources Department

Form C-102  
Revised February 10, 1994  
Instructions on back  
Submit to Appropriate District Office  
State Lease - 4 Copies  
Fee Lease - 3 Copies

**OIL CONSERVATION DIVISION**  
P.O. Box 2088  
Santa Fe, New Mexico 87504-2088

AMENDED REPORT

**WELL LOCATION AND ACREAGE DEDICATION PLAT**

<sup>1</sup> API Number 30 025 34528		<sup>2</sup> Pool Code 63780		<sup>3</sup> Pool Name WEIR BLINEBRY	
<sup>4</sup> Property Code 011127		<sup>5</sup> Property Name VAN ETTEN L.			<sup>6</sup> Well No. 19
<sup>7</sup> OGRID Number 022351		<sup>8</sup> Operator Name TEXACO EXPLORATION & PRODUCTION INC.			<sup>9</sup> Elevation 3544 GL

<sup>10</sup> Surface Location

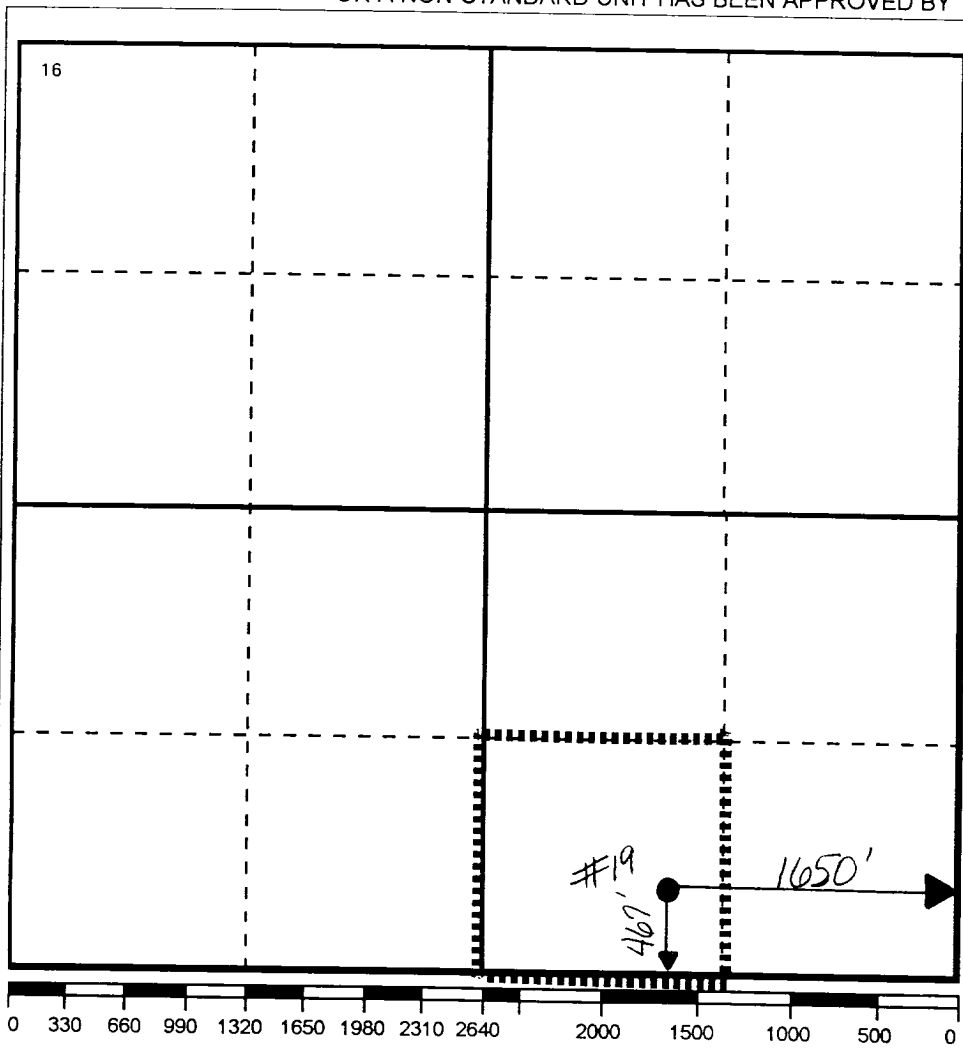
UI or lot no.	Section	Township	Range	Lot.Idn	Feet From The	North/South Line	Feet From The	East/West Line	County
0	9	20S	37E		467	SOUTH	1650	EAST	LEA

<sup>11</sup> Bottom Hole Location If Different From Surface

UI or lot no.	Section	Township	Range	Lot.Idn	Feet From The	North/South Line	Feet From The	East/West Line	County

<sup>12</sup> Dedicated Acres 40	<sup>13</sup> Joint or Infill No	<sup>14</sup> Consolidation Code	<sup>15</sup> Order No.
-------------------------------------	-------------------------------------	----------------------------------	-------------------------

NO ALLOWABLE WILL BE ASSIGNED TO THIS COMPLETION UNTIL ALL INTERESTS HAVE BEEN CONSOLIDATED OR A NON-STANDARD UNIT HAS BEEN APPROVED BY THE DIVISION



**17 OPERATOR CERTIFICATION**  
I hereby certify that the information contained herein is true and complete to the best of my knowledge and belief.

Signature: *J. Denise Leake*  
Printed Name: J. Denise Leake  
Position: Engineering Assistant  
Date: 3/31/99

**18 SURVEYOR CERTIFICATION**  
I hereby certify that the well location shown on this plat was plotted from field notes of actual surveys made by me or under my supervision, and that the same is true and correct to the best of my knowledge and belief.

Date Surveyed: \_\_\_\_\_  
Signature & Seal of Professional Surveyor: \_\_\_\_\_  
Certificate No.: \_\_\_\_\_