

DISTRICT I
P.O. Box 1980, Hobbs, NM 88241-1980

State of New Mexico
Energy, Minerals and Natural Resources Dept.

Form C-101
Revised February 10, 1994

DISTRICT II
P.O. Box Drawer DD, Artesia, NM 88211-0719

OIL CONSERVATION DIVISION

Instructions on back
Submit to Appropriate District Office
State Lease - 6 Copies
Fee Lease - 5 Copies

DISTRICT III
1000 Rio Brazos Rd., Aztec, NM 87410

P.O. Box 2088

Santa Fe, New Mexico 87504-2088

DISTRICT IV
P.O. Box 2088, Santa Fe, NM 87504-2088

AMENDED REPORT

APPLICATION FOR PERMIT TO DRILL, RE-ENTER, DEEPEN, PLUGBACK, OR ADD A ZONE

¹ Operator Name and Address TEXACO EXPLORATION & PRODUCTION INC. P.O. Box 3109, Midland Texas 79702		² OGRID Number 022351
⁴ Property Code 10918		³ API Number 30-025-35044
⁵ Property Name J. W. COOPER		⁶ Well No. 6

⁷ Surface Location

UI or lot no.	Section	Township	Range	Lot.Idn	Feet From The	North/South Line	Feet From The	East/West Line	County
G	5	20-S	37-E		2310	NORTH	2310	EAST	LEA

⁸ Proposed Bottom Hole Location If Different From Surface

UI or lot no.	Section	Township	Range	Lot.Idn	Feet From The	North/South Line	Feet From The	East/West Line	County
⁹ Proposed Pool 1 Monument, Tubb					¹⁰ Proposed Pool 2 Monument, Abo; Monument Blinbery; Wildcat, Drinkard				

¹¹ Work Type Code N	¹² WellType Code O	¹³ Rotary or C.T. ROTARY	¹⁴ Lease Type Code P	¹⁵ Ground Level Elevation 3557'
¹⁶ Multiple No	¹⁷ Proposed Depth 7600'	¹⁸ Formation TUBB	¹⁹ Contractor	²⁰ Spud Date 6/15/00

²¹ Proposed Casing and Cement Program

SIZE OF HOLE	SIZE OF CASING	WEIGHT PER FOOT	SETTING DEPTH	SACKS OF CEMENT	EST. TOP
12 1/4"	8 5/8"	24#	1400'	780 SACKS	CIRCULATE
7 7/8"	5 1/2"	17#	7600'	1880 SACKS	CIRCULATE

²² Describe the proposed program. If this application is to DEEPEN or PLUG BACK give the data on the present productive zone and proposed new productive zone. Describe the blowout prevention program, if any. Use additional sheets if necessary.

CEMENTING PROGRAM:
 SURFACE CASING: 660 SACKS CLASS C w/2% GEL, 2% CaCl₂ (14.2 PPG, 1.50 CF/S, 7.45 GW/S). F/B 120 SACKS CLASS C w/2% CaCl₂ (14.8 PPG, 1.34 CF/S, 6.40 GW/S).
 PRODUCTION CASING: 950 SACKS 50/50 POZ CLASS H w/2% GEL, 5% SALT, 1/4# FC (14.2 PPG, 1.35 CF/S, 6.30 GW/S). F/B 780 SACKS 35/65 POZ CLASS H w/6% GEL, 5% SALT, 1/4# FC (12.4 PPG, 2.14 CF/S, 10.46 GW/S). F/B 150 SACKS 50/50 POZ CLASS H w/2% GEL, 5% SALT, 1/4# FC (14.2 PPG, 1.35 CF/S, 6.30 GW/S).

²³ I hereby certify that the rules and regulations of the Oil Conservation Division have been complied with and that the information given above is true and complete to the best of my knowledge and belief. Signature <i>A. Phil Ryan</i> Printed Name <i>A. Phil Ryan</i> Title <i>Commission Coordinator</i> Date 6/1/00 Telephone 688-4620	OIL CONSERVATION DIVISION	
	Approved By: _____	
	Title: _____	
	Approval Date: <i>JUN 05 2000</i>	Expiration Date: _____
	Conditions of Approval: Attached <input type="checkbox"/>	

Permit Expires 1 Year From Approval
Date Unless Drilling Underway

454

40

DISTRICT I
P. O. Box 1980, Hobbs, NM 88240

DISTRICT II
P. O. Drawer DD, Artesia, NM 88210

DISTRICT III
1000 Rio Brazos Rd., Aztec, NM 87410

DISTRICT IV
P. O. Box 2088, Santa Fe, NM 87504-2088

State of New Mexico
Energy, Minerals and Natural Resources Department

Form C-102
Revised February 10, 1994

Instructions on back

OIL CONSERVATION DIVISION

PO Box 2088
Santa Fe, NM 87504-2088

Submit to Appropriate District Office

State Lease-4 copies
Fee Lease-3 copies

AMENDED REPORT

WELL LOCATION AND ACREAGE DEDICATION PLAT

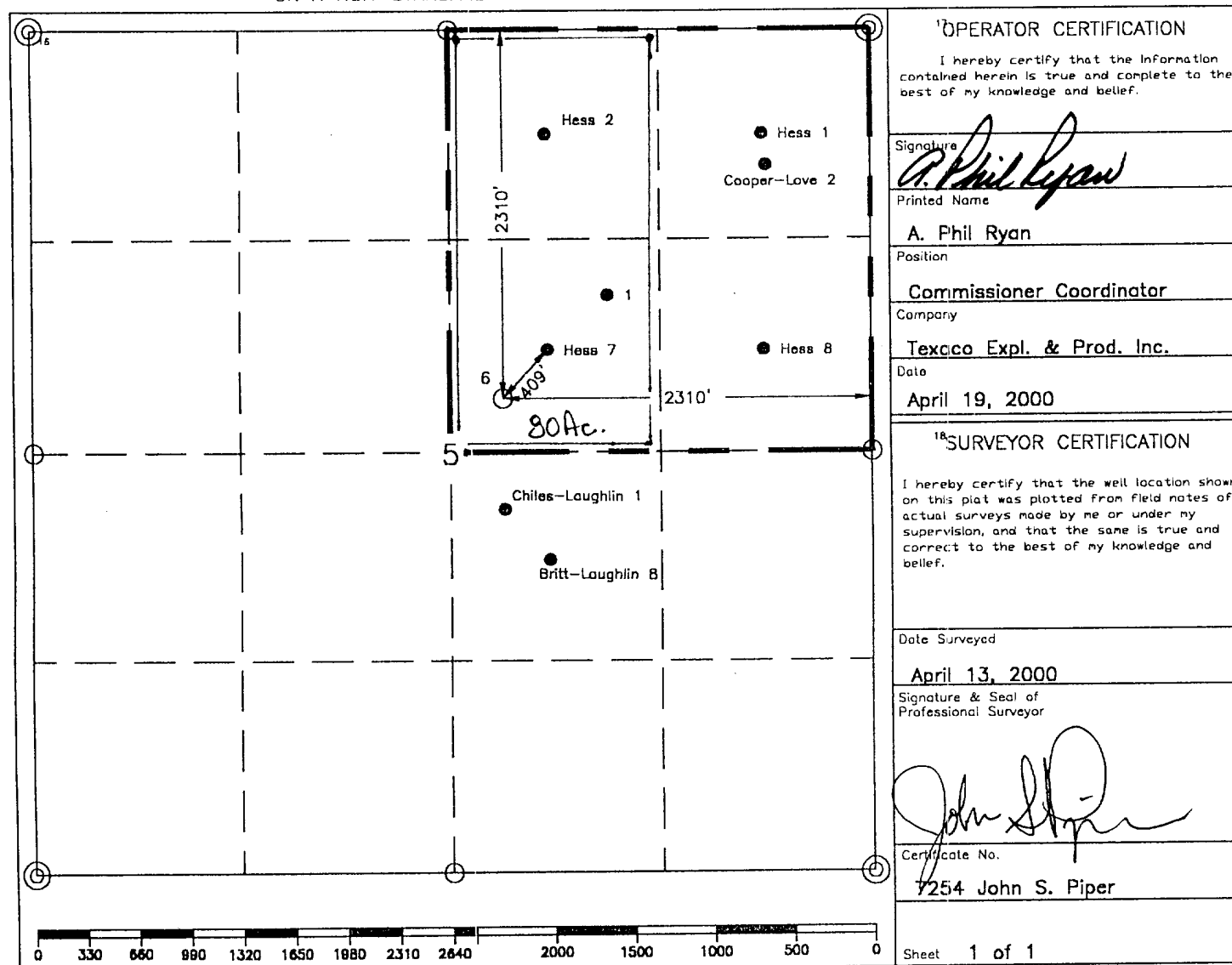
¹ API Number 30-025-35044		² Pool Code 47090		³ Pool Name Monument, Tubb	
⁴ Property Code 10918		⁵ Property Name J. W. Cooper			⁶ Well Number 6
⁷ GRID No. 22351		⁸ Operator Name TEXACO EXPLORATION & PRODUCTION, INC.			⁹ Elevation 3557'

¹⁰ Surface Location									
UL or lot no. G	Section 5	Township 20-S	Range 37-E	Lot Idn	Feet from the 2310'	North/South line North	Feet from the 2310'	East/West line East	⁷ County Lea

¹¹ Bottom Hole Location If Different From Surface									
UL or lot no.	Section	Township	Range	Lot Idn	Feet from the	North/South line	Feet from the	East/West line	⁷ County

¹² Dedicated Acres 80	¹³ Joint or Infill	¹⁴ Consolidation Code	¹⁵ Order No.
--	-------------------------------	----------------------------------	-------------------------

NO ALLOWABLE WILL BE ASSIGNED TO THIS COMPLETION UNTIL ALL INTERESTS HAVE BEEN CONSOLIDATED OR A NON-STANDARD UNIT HAS BEEN APPROVED BY THE DIVISION.



○ = Staked Location ● = Producing Well ◐ = Injection Well ◑ = Water Supply Well ◒ = Plugged & Abandon Well
⊙ = Found Section Corner, 2 or 3" Iron Pipe & GLO B.C. ⊚ = Found 1/4 Section Corner, 1" Iron Pipe & GLO B.C.

ADDITIONAL INFORMATION ON THE LOCATION

State Plane Coordinates			
Northing	584812.954	Easting	868007.589
Latitude	32°36'11.604"	Longitude	103°16'21.144"
Zone	North American Datum	Combined Grid Factor	Coordinate File
East	1983	.9998457	Monumt.cr5
Drawing File	Field Book		
Cooper6.Dwg	Lea Co. #19, Pg. 61		

DISTRICT I
P. O. Box 1980, Hobbs, NM 88240

DISTRICT II
P. O. Drawer DD, Artesia, NM 88210

DISTRICT III
1000 Rio Brazos Rd., Aztec, NM 87410

DISTRICT IV
P. O. Box 2088, Santa Fe, NM 87504-2088

State of New Mexico
Energy, Minerals and Natural Resources Department

Form C-102
Revised February 10, 1994

Instructions on back

OIL CONSERVATION DIVISION

PO Box 2088
Santa Fe, NM 87504-2088

Submit to Appropriate District Office

State Lease-4 copies
Fee Lease-3 copies

AMENDED REPORT

WELL LOCATION AND ACREAGE DEDICATION PLAT

¹ API Number		² Pool Code		³ Pool Name	
				Monument, Abo; Monument, Blinebry; Wildcat, Drinkard	
⁴ Property Code		⁵ Property Name			⁶ Well Number
		J. W. Cooper			6
⁷ OGRID No.		⁸ Operator Name			⁹ Elevation
22351		TEXACO EXPLORATION & PRODUCTION, INC.			3557'

¹⁰ Surface Location									
UL or lat no.	Section	Township	Range	Lot ldn	Feet from the	North/South line	Feet from the	East/West line	⁷ County
G	5	20-S	37-E		2310'	North	2310'	East	Lea

¹¹ Bottom Hole Location if Different From Surface									
UL or lat no.	Section	Township	Range	Lot ldn	Feet from the	North/South line	Feet from the	East/West line	⁷ County

¹² Dedicated Acres	¹³ Joint or Infill	¹⁴ Consolidation Code	¹⁵ Order No.
40			

NO ALLOWABLE WILL BE ASSIGNED TO THIS COMPLETION UNTIL ALL INTERESTS HAVE BEEN CONSOLIDATED OR A NON-STANDARD UNIT HAS BEEN APPROVED BY THE DIVISION.

¹⁶ OPERATOR CERTIFICATION

I hereby certify that the information contained herein is true and complete to the best of my knowledge and belief.

Signature: *A. Phil Ryan*

Printed Name: A. Phil Ryan

Position: Commissioner Coordinator

Company: Texaco Expl. & Prod. Inc.

Date: April 19, 2000

¹⁷ SURVEYOR CERTIFICATION

I hereby certify that the well location shown on this plat was plotted from field notes of actual surveys made by me or under my supervision, and that the same is true and correct to the best of my knowledge and belief.

Date Surveyed: April 13, 2000

Signature & Seal of Professional Surveyor: *John S. Piper*

Certificate No.: 7264 John S. Piper

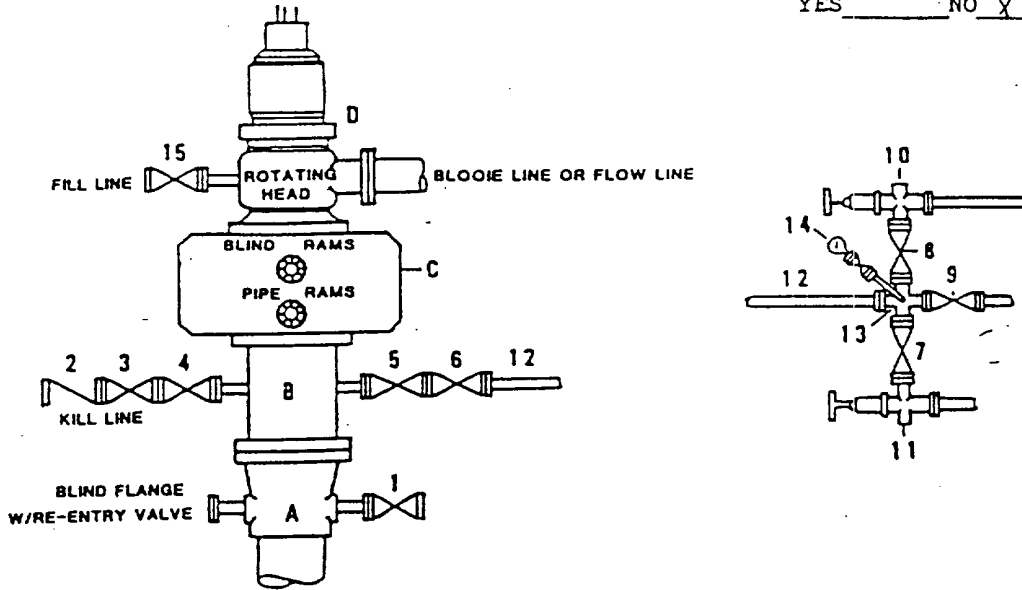
○ = Staked Location ● = Producing Well = Injection Well ∞ = Water Supply Well ⊕ = Plugged & Abandon Well
 ⊙ = Found Section Corner, 2 or 3" Iron Pipe & GLO B.C. ○ = Found /4 Section Corner, 1" Iron Pipe & GLO B.C.

ADDITIONAL INFORMATION ON THE LOCATION

State Plane Coordinates			
Northing 584812.954		Easting 868007.589	
Latitude 32°36'11.604"		Longitude 103°16'21.144"	
Zone North American Datum		Combined Grid Factor	Coordinate File
East 1983		.9998457	Monumt.cr5
Drawing File		Field Book	
Cooper6.Dwg		Lea Co. #19, Pg. 61	

**DRILLING CONTROL
CONDITION II-B 3000 WP
FOR AIR DRILLING OR
WHERE NITROGEN OR AIR BLOWS ARE EXPECTED**

H₂S TRIM REQUIRED
YES _____ NO X



DRILLING CONTROL

MATERIAL LIST - CONDITION II - B

- A Texaco Wellhead
- B 3000# W.P. drilling spool with a 2" minimum flanged outlet for kill line and 3" minimum flanged outlet for choke line.
- C 3000# W.P. Dual ram type preventer, hydraulic operated with 1" steel, 3000# W.P. control lines (where sub-structure height is adequate, 2 - 3000# W.P. single ram type preventers may be utilized).
- D Rotating Head with fill up outlet and extended Bloopie Line.
- 1,3,4, 7,8. 2" minimum 3000# W.P. flanged full opening steel gate valve, or Halliburton Lo Torc Plug valve.
- 2 2" minimum 3000# W.P. back pressure valve.
- 5,6,9 3" minimum 3000# W.P. flanged full opening steel gate valve, or Halliburton Lo Torc Plug valve.
- 12 3" minimum schedule 80, Grade "B", seamless line pipe.
- 13 2" minimum x 3" minimum 3000# W.P. flanged cross.
- 10,11 2" minimum 3000# W.P. adjustable choke bodies.
- 14 Cameron Mud Gauge or equivalent (location optional in choke line).
- 15 2" minimum 3000# W.P. flanged or threaded full opening steel gate valve, or Halliburton Lo Torc Plug valve.



TEXACO, INC.
MIDLAND DIVISION
MIDLAND, TEXAS



SCALE	DATE	EST. NO.	DRG. NO.
DRAWN BY			
CHECKED BY			
APPROVED BY			

EXHIBIT C