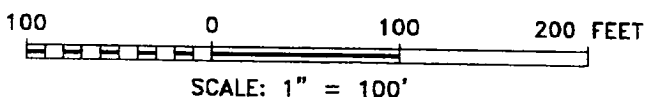
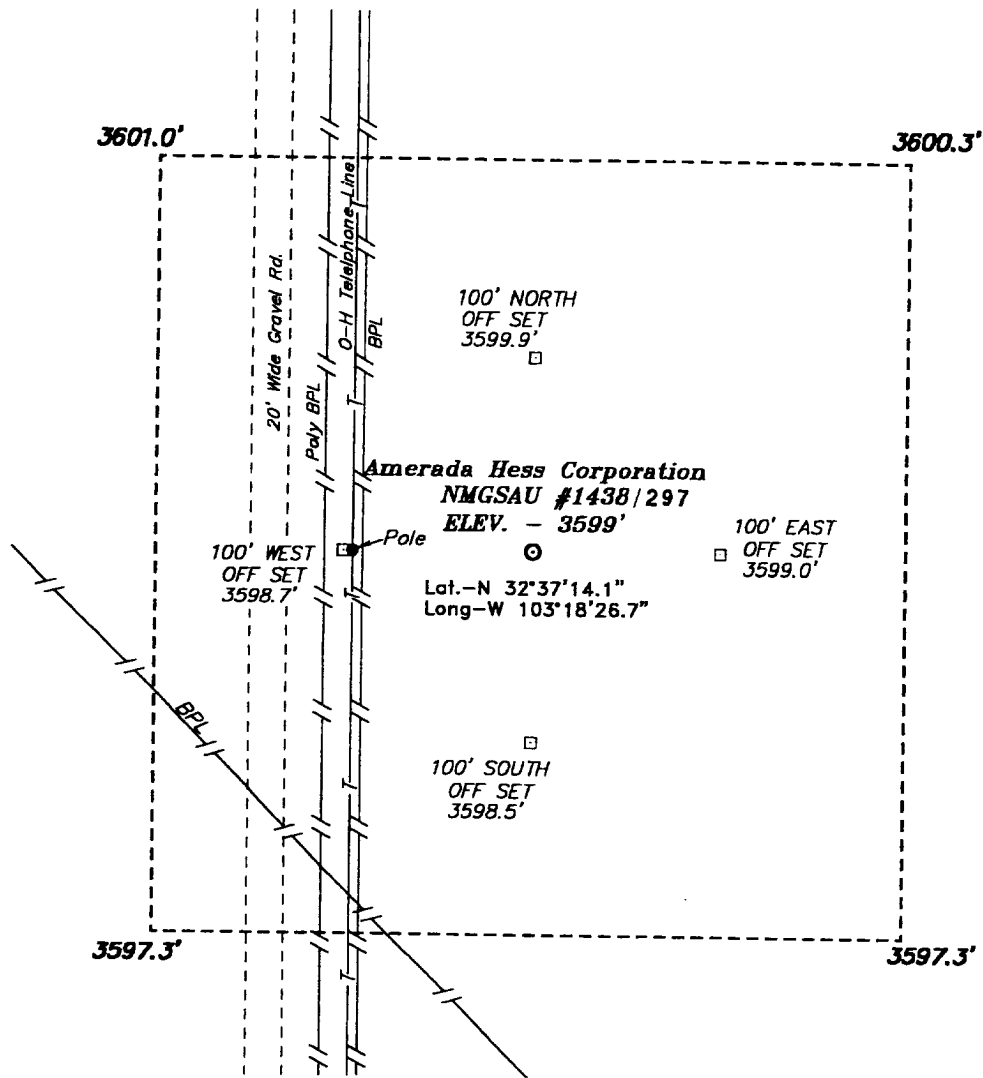


**SECTION 36, TOWNSHIP 19 SOUTH, RANGE 36 EAST, N.M.P.M.,  
LEA COUNTY, NEW MEXICO.**



Directions to Location:

FROM THE JUNCTION OF US HWY 62/180 AND COUNTY ROAD 41. GO SOUTH ON CO. RD. 41 APPROX. 5 MILES TO A POINT WHICH LIES 2525 FEET EAST FROM THE PROPOSED LOCATION.

<b>Amerada Hess Corporation</b>	
REF: NMGSAU #297 / Well Pad Topo	
THE NMGSAU No. 297 LOCATED 1310' FROM THE NORTH LINE AND 2525' FROM THE EAST LINE OF SECTION 36, TOWNSHIP 19 SOUTH, RANGE 36 EAST, N.M.P.M., LEA COUNTY, NEW MEXICO.	

**BASIN SURVEYS** P.O. BOX 1786-HOBBS, NEW MEXICO

W.O. Number: 0437      Drawn By: **K. GOAD**

Date: 08-02-2000      Disk: KJG #122 - 0437A.DWG

Survey Date: 07-27-2000      Sheet 1 of 1 Sheets