

District I
1625 N. French Dr., Hobbs, NM 88240
District II
811 South First, Artesia, NM 88210
District III
1000 Rio Brazos Road, Aztec, NM 87410
District IV
2040 South Pacheco, Santa Fe, NM 87505

State of New Mexico
Energy Minerals and Natural Resources

Form C-101
Revised March 17, 1999

Oil Conservation Division
2040 South Pacheco
Santa Fe, NM 87505

Submit to appropriate District Office
State Lease - 6 Copies
Fee Lease - 5 Copies

AMENDED REPORT

APPLICATION FOR PERMIT TO DRILL, RE-ENTER, DEEPEN, PLUGBACK, OR ADD A ZONE

¹ Operator Name and Address Occidental Permian Limited Partnership P.O. Box 4294 Houston, TX 77210-4294		² OGRID Number 157984
		³ API Number 30-025-35305
³ Property Code 19552	⁵ Property Name South Hobbs (GSA) Unit	⁶ Well No. 242

⁷ Surface Location

U.L. or lot no	Section	Township	Range	Lot Idn	Feet from the	North/South line	Feet from the	East/West line	County
H	5	19-S	38-E		1556	N	1102	E	Lea

⁸ Proposed Bottom Hole Location If Different From Surface

U.L. or lot no	Section	Township	Range	Lot Idn	Feet from the	North/South line	Feet from the	East/West line	County
H	5	19S	38E		1298	N	584	E	Lea

⁹ Proposed Pool 1 <i>Hobbs, GB/SA</i>	¹⁰ Proposed Pool 2
---	-------------------------------

¹¹ Work Type Code N	¹² Well Type Code O	¹³ Cable/Rotary R	¹⁴ Lease Type Code <i>XP</i>	¹⁵ Ground Level Elevation 3617
¹⁶ Multiple No	¹⁷ Proposed Depth 4500'	¹⁸ Formation San Andres	¹⁹ Contractor Key	²⁰ Spud Date December, 2000

²¹ Proposed Casing and Cement Program

Hole Size	Casing Size	Casing weight/foot	Setting Depth	Sacks of Cement	Estimated TOC
18"	14"	Conductor	40'	50	Surface
12.25"	8.625"	24#	1500'	725	Surface
7.875"	5.5"	15.5#	4266.7'	1100	Surface

²² Describe the proposed program. If this application is to DEEPEN or PLUG BACK, give the data on the present productive zone and proposed new productive zone. Describe the blowout prevention program, if any. Use additional sheets if necessary.

Permit Expires 1 Year From Approval
Date Unless Drilling Underway
Directional

See attached for proposed drilling program.

BOP Program 3000# Ram Preventer

Well to be drilled as a directional well due to a surface obstruction situated above the bottomhole target.

²³ I hereby certify that the information given above is true and complete to the best of my knowledge and belief.		OIL CONSERVATION DIVISION	
Signature: <i>[Signature]</i>		Approved by: <i>[Signature]</i>	
Printed name: DAVID W NELSON		Title: <i>DEC 1 - 2000</i>	
Title: ENGINEER		Approval Date:	Expiration Date:
Date: 12-11-00	Phone: 505-397-8211	Conditions of Approval: Attached <input type="checkbox"/>	

5
5

[Handwritten mark]

Proposed Drilling Program
South Hobbs (GSA) Unit No. 242
Lea County, New Mexico

A 14" conductor will be set and cemented to surface with 50 sx. Cement. A 12.25 " hole will be drilled from surface to approximately 1500'. This will allow for protection of all water zones and casing off of the Red Beds. A full string of 8.625", 24 #, J-55 surface casing will be run and set 25' into the top of the Rustler Anhydrite with cement circulated to surface. The cement will be allowed to set for a minimum of eight (8) hours (minimum 500# compressive strength) and will then be tested to 1500 psi for 30 minutes before drilling resumes. After the casing is run and cemented, weld on 8-5/8" X 11" 3M casinghead housing and nipple up BOP stack(3000# Ram Preventer).

A 7.875" hole will be drilled out from surface casing point (1500') to +/- 4300' TVD. A full string of 5.5", 15.5 #, J-55 production casing will be run to TD and cemented to surface (casing test to 1500 psi will be done by the completion rig).

OIL CONSERVATION DIVISION

P.O. Box 2088
Santa Fe, New Mexico 87504-2088

AMENDED REPORT

WELL LOCATION AND ACREAGE DEDICATION PLAT

API Number 30-02.5-35303	Pool Code 31920	Pool Name HOBBS: GRAYBURG - SAN ANDRES
Property Code 19552	Property Name SOUTH HOBBS (GSA) UNIT	Well Number 242
OGRID No. 157984	Operator Name OCCIDENTAL PERMIAN LTD.	Elevation 3617

Surface Location

UL or lot No.	Section	Township	Range	Lot Idn	Feet from the	North/South line	Feet from the	East/West line	County
H	5	19 S	38 E		1556	NORTH	1102	EAST	LEA

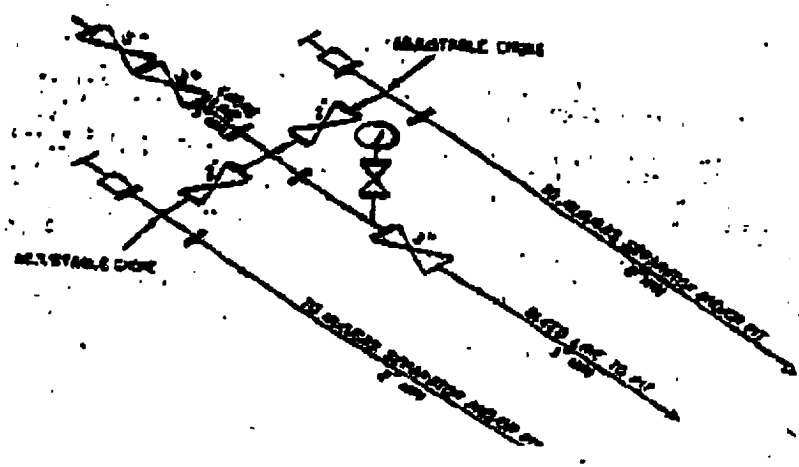
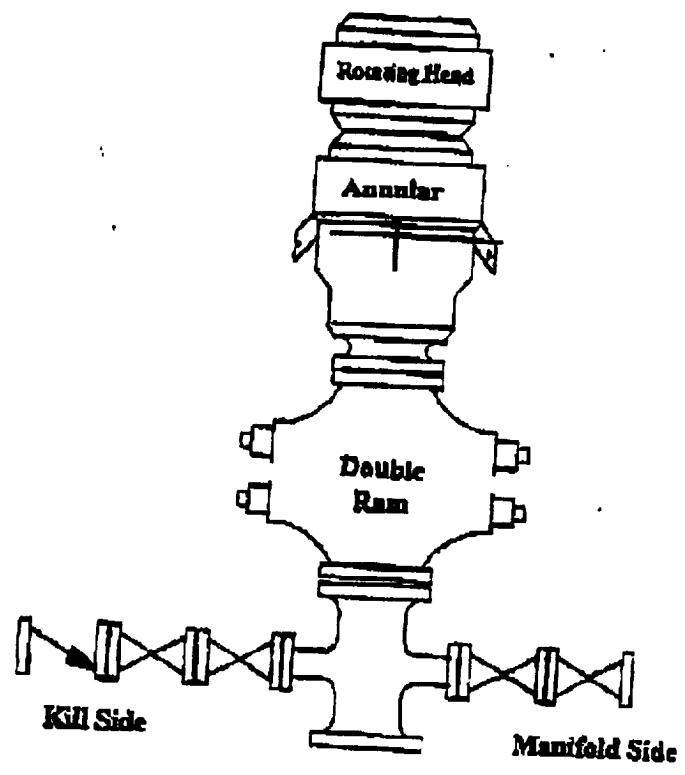
Bottom Hole Location If Different From Surface

UL or lot No.	Section	Township	Range	Lot Idn	Feet from the	North/South line	Feet from the	East/West line	County
1	5	19 S	38 E		1298	NORTH	584	EAST	LEA

Dedicated Acres 46 39.92	Joint or Infill	Consolidation Code	Order No.
------------------------------------	-----------------	--------------------	-----------

NO ALLOWABLE WILL BE ASSIGNED TO THIS COMPLETION UNTIL ALL INTERESTS HAVE BEEN CONSOLIDATED OR A NON-STANDARD UNIT HAS BEEN APPROVED BY THE DIVISION

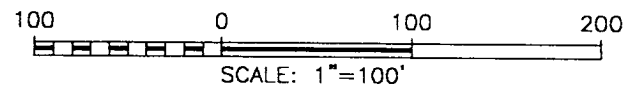
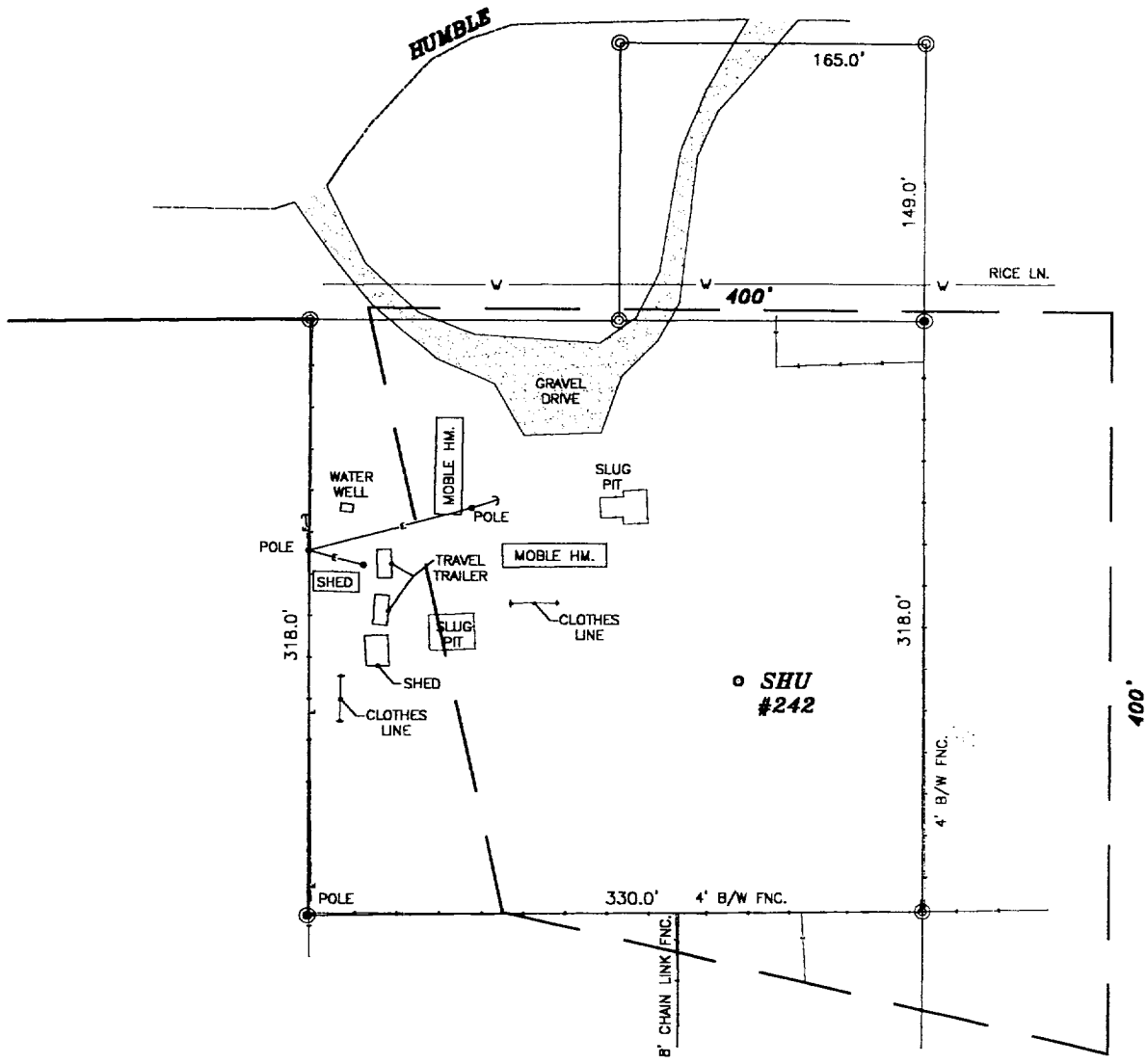
<p>SOUTH HOBBS (GRAYBURG SAN ANDRES) UNIT BOUNDARY</p> <p>330' UNIT BOUNDARY OFFSET LINE</p> <p>LOT 4 39.88 AC.</p> <p>LOT 3 39.90 AC.</p> <p>LOT 2 39.90 AC.</p> <p>LOT 1 39.92 AC.</p>		<p>1556'</p> <p>1334'</p> <p>1298'</p> <p>584'</p> <p>674'</p> <p>1102'</p> <p>3618.0'</p> <p>3617.3'</p> <p>3617.0'</p> <p>3615.5'</p> <p>PROP. B.H.</p> <p>PROP. PENETRATION POINT 3871.7 TVD</p> <p>SEE DETAIL</p>		<p>OPERATOR CERTIFICATION</p> <p>I hereby certify the the information contained herein is true and complete to the best of my knowledge and belief.</p> <p><i>David W Nelson</i> Signature</p> <p>DAVID W NELSON Printed Name</p> <p>ENGINEER Title</p> <p>12-21-00 Date</p>	
<p>PROPOSED SURFACE LOC. NAD 27 NM EAST ZONE N=617517.8 E=859408.6</p> <p>PROPOSED BOTTOM HOLE LOCATION NAD 27 NM EAST ZONE N=617781.3 E=859923.4</p>		<p>DETAIL</p> <p>GEOGRAPHIC LOCATION NAD 27 LAT. = 32°41'31.97" N LONG. = 103°09'54.37" W</p> <p>(TRUE BRG.) N62°35'E - 482' SURF. TO PROP. PENETRATION PT. (TRUE BRG.) N62°54'E - 578' SURF. TO PROP. BOTTOM HOLE LOC.</p>		<p>SURVEYOR CERTIFICATION</p> <p>I hereby certify that the well location shown on this plat was plotted from field notes of actual surveys made by me or under my supervision and that the same is true and correct to the best of my belief.</p> <p>NOVEMBER 13, 2000</p> <p>Date Surveyed: LMP</p> <p>Signature & Seal of Professional Surveyor</p> <p><i>Gary Edson</i> 12/6/00</p> <p>00-11-1446</p> <p>Certificate No. RONALD J. EIDSON 3239 GARY EIDSON 12641</p>	



SECTION 5, TOWNSHIP 19 SOUTH, RANGE 38 EAST, N.M.P.M.,

LEA COUNTY,

NEW MEXICO.



OCCIDENTAL PERMIAN LTD.			
THE SOUTH HOBBS (GSA) UNIT #242 1556 FEET FROM THE NORTH LINE AND 1102 FEET FROM THE EAST LINE OF SECTION 5, TOWNSHIP 19 SOUTH, RANGE 38 EAST, N.M.P.M. LEA COUNTY, NEW MEXICO			
Survey Date: 11/13/00	Sheet 1 of 1 Sheets		
W.O. Number: 00-11-1446	Drawn By: LMP		
Date: 11/21/00	DISK: CD#3	OCCI1446	Scale: 1"=1000'

JOHN WEST SURVEYING COMPANY
412 N. DAL PASO - HOBBS, NEW MEXICO - 505-393-3117

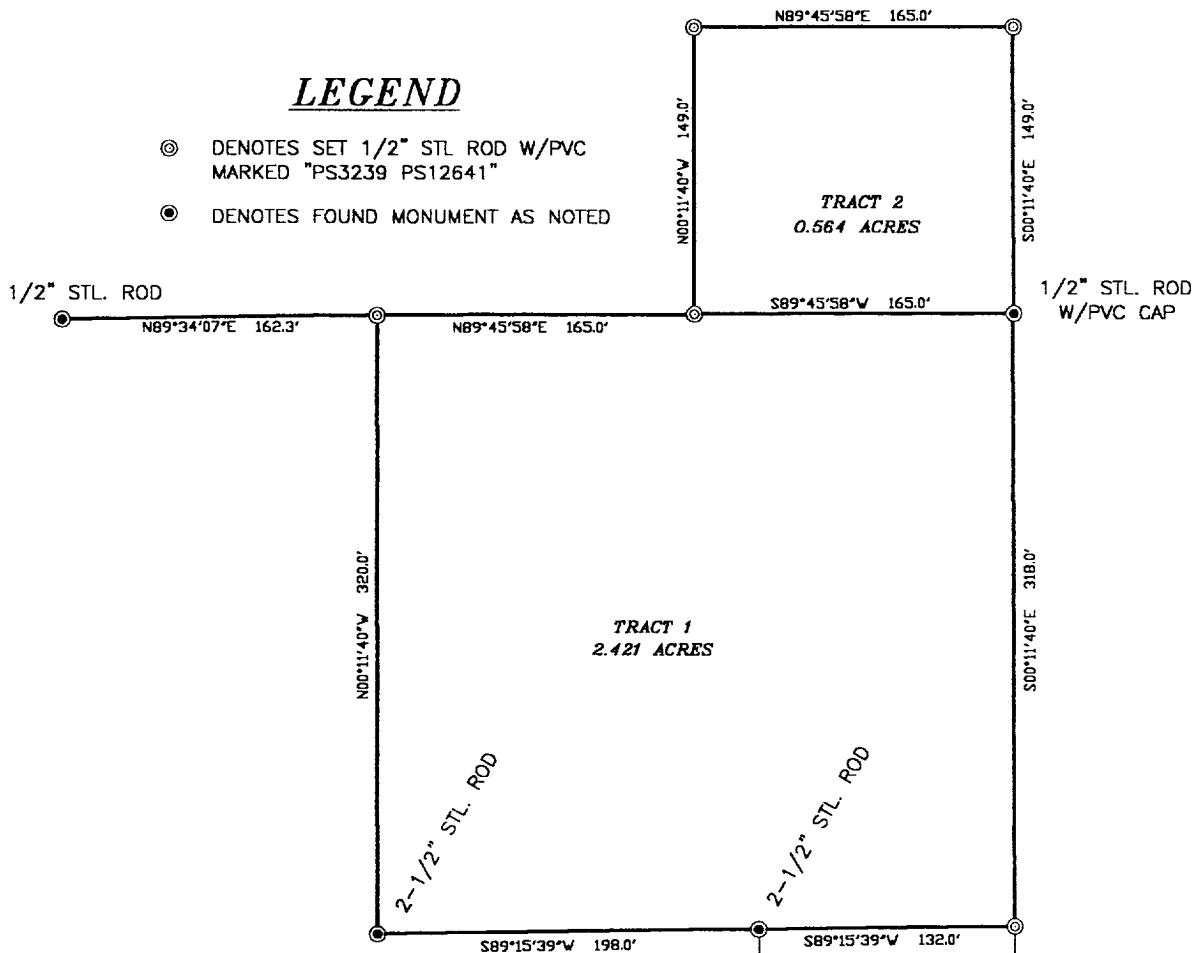
SECTION 5, TOWNSHIP 19 SOUTH, RANGE 38 EAST, N.M.P.M.,

LEA COUNTY,

NEW MEXICO.

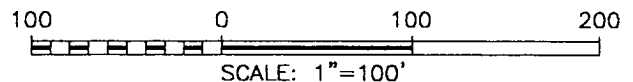
LEGEND

- ⊙ DENOTES SET 1/2" STL ROD W/PVC MARKED "PS3239 PS12641"
- DENOTES FOUND MONUMENT AS NOTED



NOTE:

BEARINGS SHOWN HEREON ARE MERCATOR GRID AND CONFORM TO THE NEW MEXICO COORDINATE SYSTEM, "NEW MEXICO EAST ZONE"; NORTH AMERICAN DATUM 1983. DISTANCES ARE SURFACE VALUE.



I HEREBY CERTIFY THAT I DIRECTED AND AM RESPONSIBLE FOR THIS SURVEY, THAT THIS SURVEY IS TRUE AND CORRECT TO THE BEST OF MY KNOWLEDGE AND BELIEF, AND THAT THIS SURVEY AND PLAT MEET THE MINIMUM STANDARDS FOR SURVEYING IN NEW MEXICO.

Gary G. Eidson 12/6/00

RONALD J. EIDSON, N.M. P.S. No. 3239
 GARY G. EIDSON N.M. P.S. No. 12641

JOHN WEST SURVEYING COMPANY

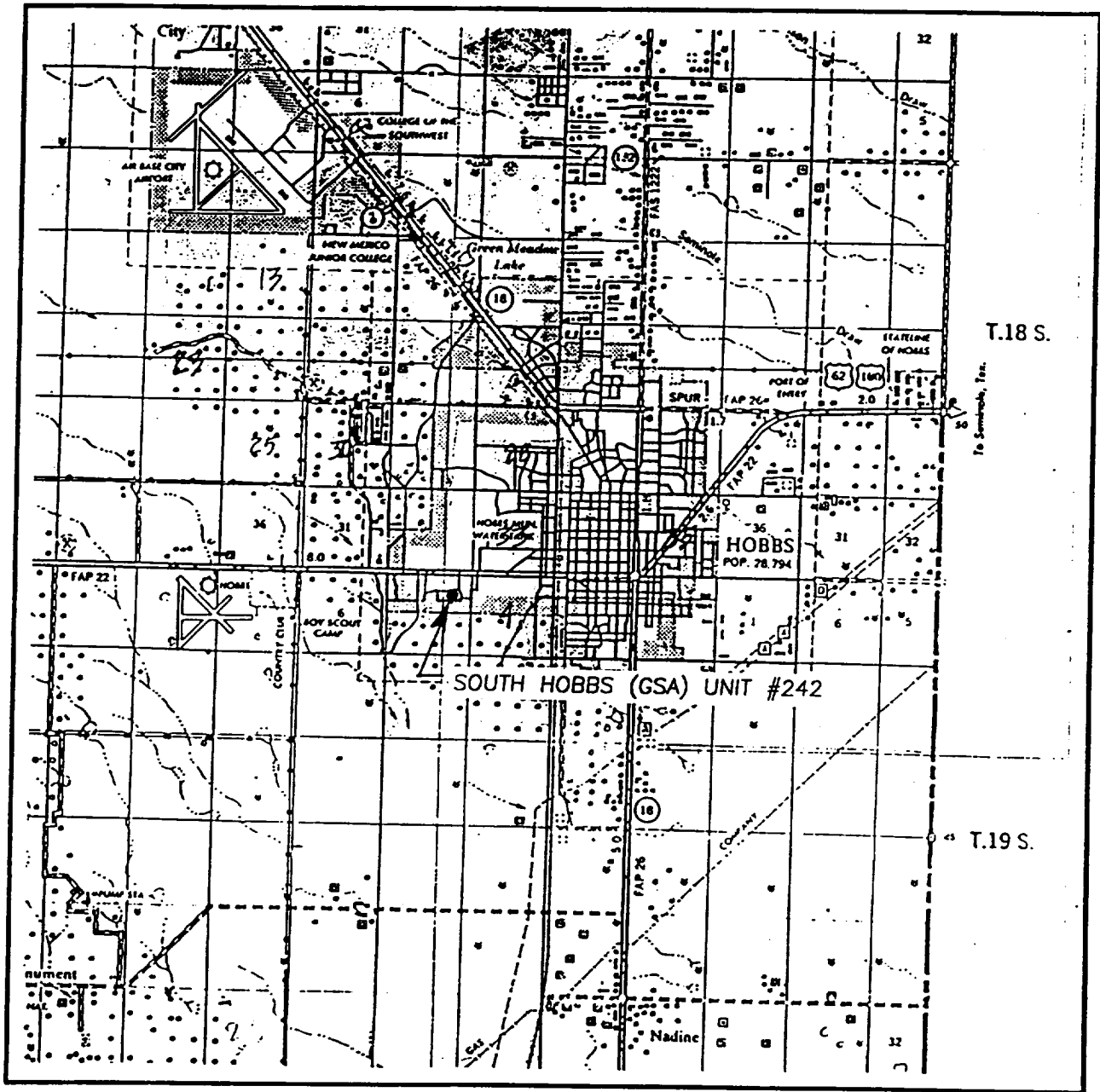
412 N. DAL PASO - HOBBS, NEW MEXICO - 505-393-3117

OCCIDENTAL PERMIAN

SURVEY OF TWO TRACTS IN THE NORTHEAST QUARTER OF SECTION 5, TOWNSHIP 19 SOUTH, RANGE 38 EAST, LEA COUNTY, NEW MEXICO

Survey Date: 11/13/00	Sheet 1 of 1 Sheets
W.O. Number: 00-11-1446	Drawn By: LMP
Date: 11/21/00	DISK: CD#3
OCC1446	Scale: 1"=1000'

VICINITY MAP



SCALE: 1" = 2 MILES

SEC. 5 TWP. 19-S RGE. 38-E

SURVEY N.M.P.M.

COUNTY LEA

DESCRIPTION 1556' FNL & 1102' FEL

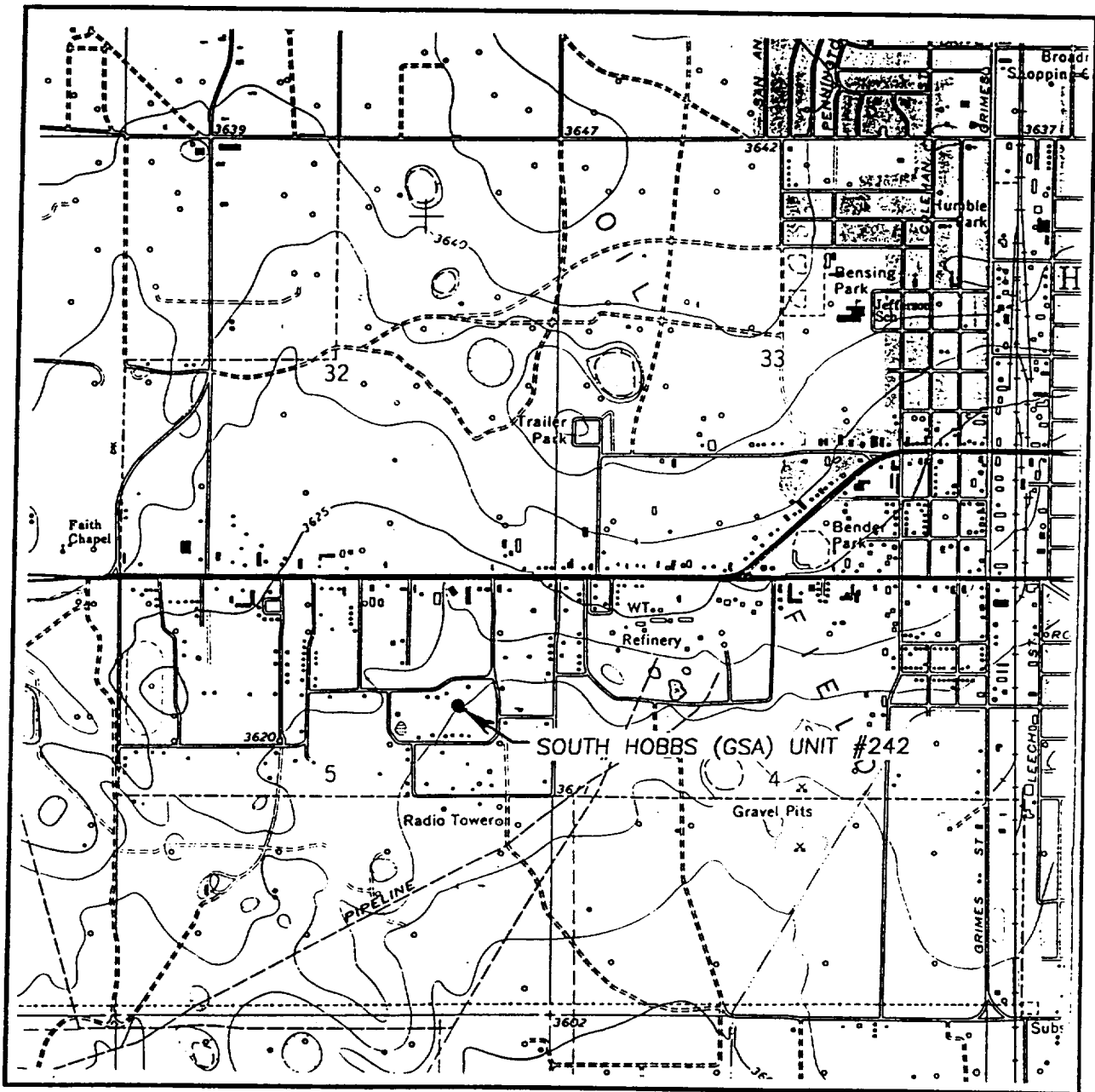
ELEVATION 3617

OPERATOR OCCIDENTAL PERMIAN LTD.

LEASE SOUTH HOBBS (GSA) UNIT

JOHN WEST SURVEYING
HOBBS, NEW MEXICO
(505) 393-3117

LOCATION VERIFICATION MAP



SCALE: 1" = 2000'

CONTOUR INTERVAL:
HOBBS, N.M. - 5'

SEC. 5 TWP. 19-S RGE. 38-E

SURVEY N.M.P.M.

COUNTY LEA

DESCRIPTION 1556' FNL & 1102' FEL

ELEVATION 3617

OPERATOR OCCIDENTAL PERMIAN LTD.

LEASE SOUTH HOBBS (GSA) UNIT

U.S.G.S. TOPOGRAPHIC MAP

HOBBS, N.M.

JOHN WEST SURVEYING
HOBBS, NEW MEXICO
(505) 393-3117

ABOVE DOES NOT
INDICATE WHEN
CONFIDENTIAL LOGS
WILL BE RELEASED

ELF 4/6/21