

District I
PO Box 1980, Hobbs, NM 88241-1980

District II
811 South First, Artesia, NM 88210

District III
1000 Rio Brazos Rd., Aztec, NM 87410

District IV
2040 South Pacheco, Santa Fe, NM 87505

State of New Mexico
Energy, Minerals & Natural Resources Department

Form C-101
Revised October 18, 1994

Instructions on back
Submit to Appropriate District Office
State Lease - 6 Copies
Fee Lease - 5 Copies

OIL CONSERVATION DIVISION
2040 South Pacheco
Santa Fe, NM 87505

AMENDED REPORT

APPLICATION FOR PERMIT TO DRILL, RE-ENTER, DEEPEN, PLUGBACK, OR ADD A ZONE

1 Operator Name and Address Trilogy Operating, Inc P.O. Box 7606 Midland, Texas 79708		2 OGRID Number 021602
		3 API Number 30-025-35483
4 Property Code 27797	5 Property Name Jeannie State	6 Well No. 1

Surface Location

UL or lot no.	Section	Township	Range	Lot Idn	Feet from the	North/South line	Feet from the	East/West Line	County
O	18	20S	36E		660	South	1980	East	Lea

Proposed Bottom Hole Location If Different From Surface

UL or lot no.	Section	Township	Range	Lot Idn	Feet from the	North/South line	Feet from the	East/West Line	County
9 Proposed Pool 1 Eumont Yates-Seven Rivers-Queen					10 Proposed Pool 2				

11 Work Type Code N	12 Well Type Code O	13 Cable/Rotary R	14 Lease Type Code S	15 Ground Level Elevation 3635
16 Multiple No	17 Proposed Depth 5000	18 Formation Queen	19 Contractor Key Drilling	20 Spud Date 04-01-01

Proposed Casing and Cement Program

Hole Size	Casing Size	Casing weight/foot	Setting Depth	Sacks of Cement	Estimated TOC
12 1/4	8 5/8	24	400	275	circulate
7 7/8	5 1/2	15.5	5000	1300	circulate

22 Describe the proposed program. If this application is to DEEPEN or PLUG BACK give the data on the present productive zone and proposed new productive zone. Describe the blowout prevention program, if any. Use additional sheets if necessary.

- 1) Drill 12 1/4" hole w/ fresh water mud to a setting depth of approximately 400'
- 2) Cement w/ 275 sx class "c" cement + 2% CaCl2 - circulate cement to surface - WOC 12 hrs before drill out
- 3) Drill 7 7/8" hole w/ brine mud to 5000' - run open hole logs
- 4) Set 5 1/2" - 15.50# - J55- ST&C csg to 5000' or across deepest potential pay zone
- 5) Cement w/ adequate cement to circulate to surface and cover salt & anhydrite sections - apprx. 1300 sx class "c"
- 6) If logs are not prospective then P&A as per NMOCD-Hobbs instructions

23 I hereby certify that the information given above is true and complete to the best of my knowledge and belief.

Signature: *Michael G. Mooney*
Printed name: Michael G. Mooney

Title: Petroleum Engineer

Date: 03-26-01 Phone: 915/686-2027

OIL CONSERVATION DIVISION

Approved By: _____
Title: _____

Approval Date: _____ Expiration Date: _____

Conditions of Approval:
Attached:

Permit Expires 1 Year From Approval Date Unless Drilling Underway

MP

DISTRICT I
P.O. Box 1980, Hobbs, NM 88241-1980

State of New Mexico
Energy, Minerals and Natural Resources Department

Form C-102
Revised February 10, 1994
Submit to Appropriate District Office
State Lease - 4 Copies
Fee Lease - 3 Copies

DISTRICT II
P.O. Drawer DD, Artesia, NM 88211-0719

OIL CONSERVATION DIVISION

P.O. Box 2088
Santa Fe, New Mexico 87504-2088

DISTRICT III
1000 Rio Brazos Rd., Artec, NM 87410

DISTRICT IV
P.O. BOX 2088, SANTA FE, N.M. 87504-2088

WELL LOCATION AND ACREAGE DEDICATION PLAT

AMENDED REPORT

API Number 30-025-35483	Pool Code 22800	Pool Name Eumont (Yates-Seven Rivers-Queen)
Property Code 27797	Property Name JEANNIE STATE 18	Well Number 1
OGRID No. 021602	Operator Name TRILOGY OPERATING INC.	Elevation 3635'

Surface Location

UL or lot No.	Section	Township	Range	Lot Idn	Feet from the	North/South line	Feet from the	East/West line	County
0	18	20-S	36-E		660	SOUTH	1980	EAST	LEA

Bottom Hole Location If Different From Surface

UL or lot No.	Section	Township	Range	Lot Idn	Feet from the	North/South line	Feet from the	East/West line	County

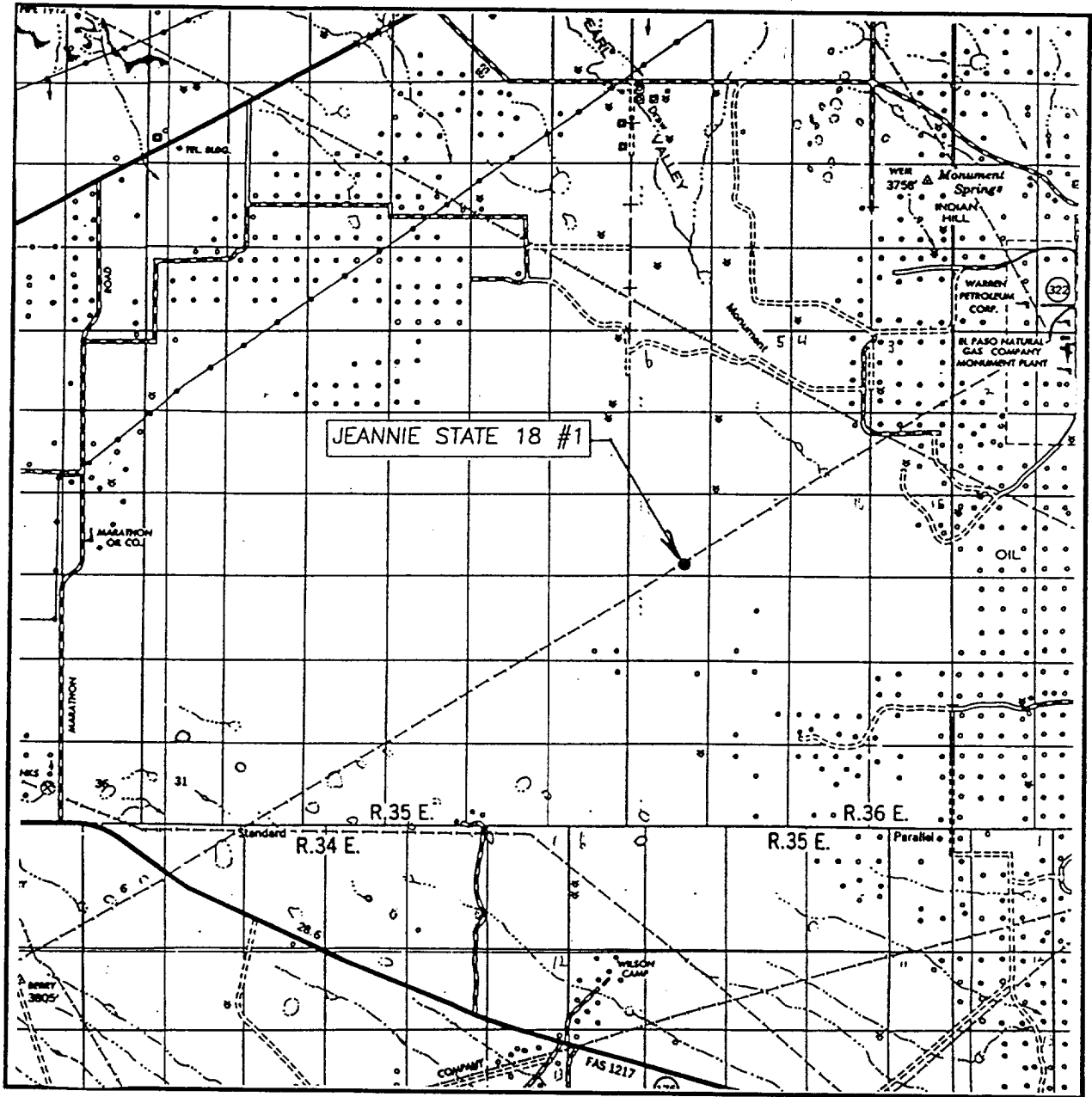
Dedicated Acres	Joint or Infill	Consolidation Code	Order No.
40	I		

NO ALLOWABLE WILL BE ASSIGNED TO THIS COMPLETION UNTIL ALL INTERESTS HAVE BEEN CONSOLIDATED OR A NON-STANDARD UNIT HAS BEEN APPROVED BY THE DIVISION

LOT 1 39.48 AC				<p>OPERATOR CERTIFICATION</p> <p>I hereby certify the the information contained herein is true and complete to the best of my knowledge and belief.</p> <p><i>Michael G. Mooney</i> Signature Michael G. Mooney Printed Name Petroleum Engineer Title 3/26/01 Date</p> <p>SURVEYOR CERTIFICATION</p> <p>I hereby certify that the well location shown on this plat was plotted from field notes of actual surveys made by me or under my supervision, and that the same is true and correct to the best of my belief.</p> <p>MARCH 21, 2001</p> <p>Date Surveyed _____ AWB Signature & Seal of Professional Surveyor <i>Ronald J. Eidson</i> 03/22/01 01-11-0345 Certificate No. RONALD J. EIDSON 3239 GARY EIDSON 12641</p>
LOT 2 39.48 AC				
LOT 3 39.48 AC				
LOT 4 39.48 AC				



VICINITY MAP

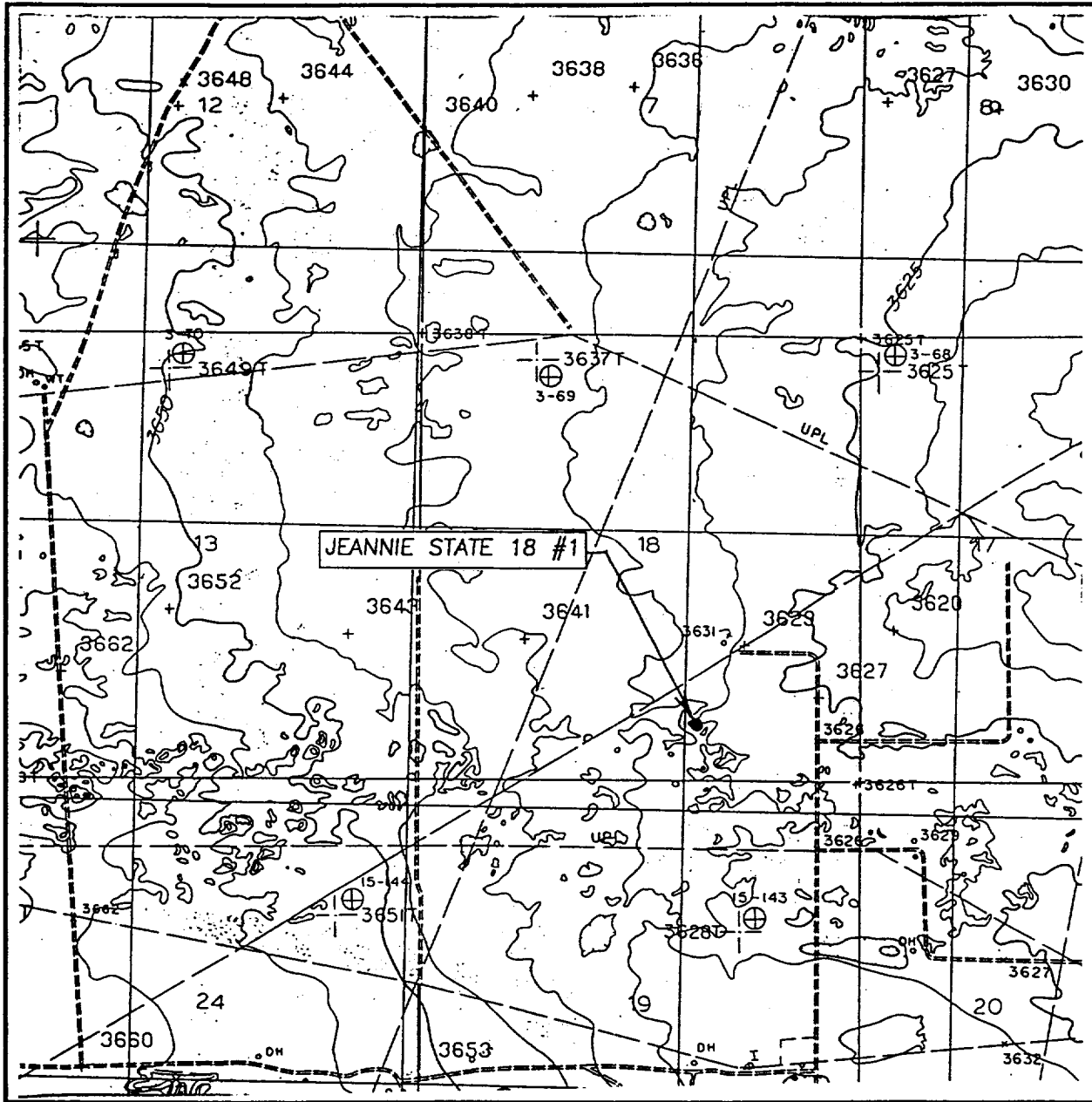


SCALE: 1" = 2 MILES

SEC. 18 TWP. 20-S RGE. 36-E
 SURVEY N.M.P.M.
 COUNTY LEA
 DESCRIPTION 660'FSL & 1980'FEL
 ELEVATION 3635'
 OPERATOR TRILOGY OPERATING INC.
 LEASE JEANNIE STATE 18

JOHN WEST SURVEYING
 HOBBS, NEW MEXICO
 (505) 393-3117

LOCATION VERIFICATION MAP



SCALE: 1" = 2000'

CONTOUR INTERVAL: 5'
MOUNMENT SW, N.M.

SEC. 18 TWP. 20-S RGE. 36-E

SURVEY _____ N.M.P.M. _____

COUNTY _____ LEA _____

DESCRIPTION 660' FSL & 1980' FEL

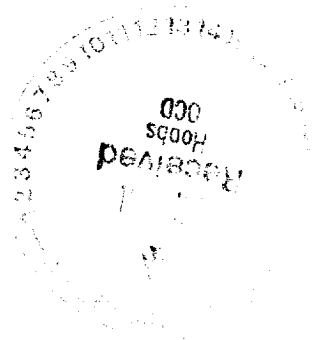
ELEVATION 3635'

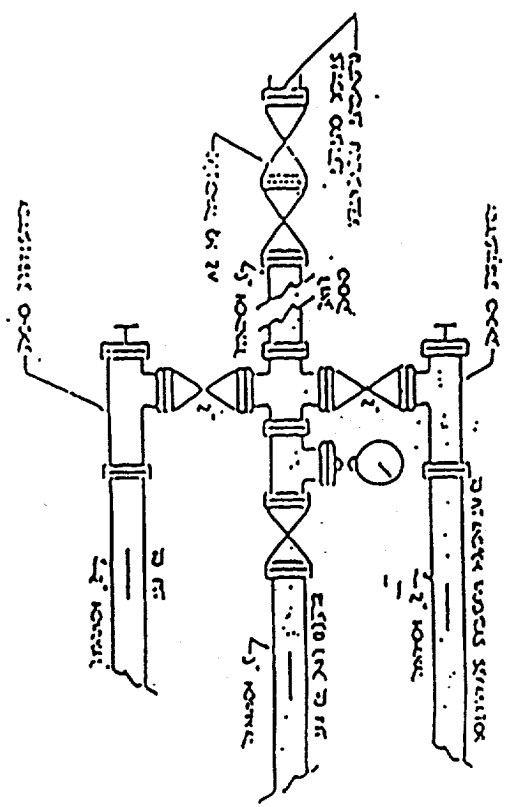
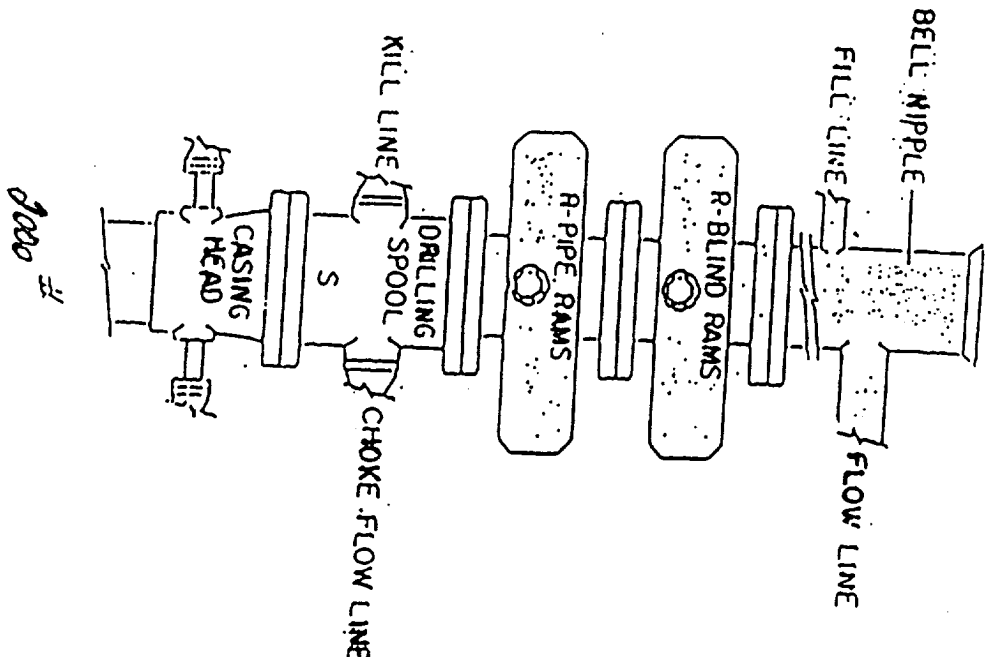
OPERATOR TRILOGY OPERATING INC.

LEASE JEANNIE STATE 18

U.S.G.S. TOPOGRAPHIC MAP
MOUNMENT SW, N.M.

JOHN WEST SURVEYING
HOBBS, NEW MEXICO
(505) 393-3117





PROPOSED BOP CONFIGUREMENT