

District I
P.O. Box 1980, Hobbs, NM 88241-1980

District II
811 South First, Artesia, NM 88210

District III
1000 Rio Brazos Rd., Aztec, NM 87410

District IV
2040 South Pacheco, Santa Fe, NM 87505

State of New Mexico
Energy, Minerals & Natural Resources Department

Form C-101
Revised October 18, 1994
Instructions on back
Submit to Appropriate District Office
State Lease - 6 Copies
Fee Lease - 5 Copies

OIL CONSERVATION DIVISION
2040 South Pacheco
Santa Fe, NM 87505

AMENDED REPORT

APPLICATION FOR PERMIT TO DRILL, RE-ENTER, DEEPEN, PLUGBACK, OR ADD A ZONE

Operator Name and Address Trilogy Operating, Inc. P.O. Box 7606 Midland, Texas 79708		GRID Number 021602
		API Number 30-025-35508
Property Code 27873	Property Name Ruby	Well No. 1

Surface Location

UL or lot no.	Section	Township	Range	Lot Idn	Feet from the	North/South line	Feet from the	East/West Line	County
N	24	19S	38E		330	South	2310	West	Lea

Proposed Bottom Hole Location If Different From Surface

UL or lot no.	Section	Township	Range	Lot Idn	Feet from the	North/South line	Feet from the	East/West Line	County
Proposed Pool 1 Nadine : Drinkard-Abo					Proposed Pool 2 Nadine : Blinebry				

Work Type Code N	Well Type Code O	Cable/Rotary R	Lease Type Code P	Ground Level Elevation 3585
Multiple No	Proposed Depth 8000	Formation Abo	Contractor Patterson # 54	Spud Date 05-01-01

Proposed Casing and Cement Program

Hole Size	Casing Size	Casing weight/foot	Setting Depth	Sacks of Cement	Estimated TOC
12 1/4	8 5/8	24	1700	750	Circulate
7 7/8	5 1/2	17	8000	1500	Circulate

²² Describe the proposed program. If this application is to DEEPEN or PLUG BACK give the data on the present productive zone and proposed new productive zone. Describe the blowout prevention program, if any. Use additional sheets if necessary.

- 1) Drill 12 1/4" surface hole using fresh water mud - TD hole @ approx. 1700' or hard formation
- 2) Set 8 5/8" - 24# - K55 casing @ 1700' - cement w/ approx. 750 sx class "c" cement and circulate to surface
- 3) WOC 12 hrs - Test BOP's to 3000 psi - Begin drilling 7 7/8" hole w/ brine water mud
- 4) TD 7 7/8" hole @ approx. 8000' - run open hole logs
- 5) Set 5 1/2" - 17# - N80 & J55 casing - cement w/ approx. 1500 sx of class "H" cement and circulate cement to surface
- 6) If Non-productive - P&A well as per NMOCD

²³ I hereby certify that the information given above is true and complete to the best of my knowledge and belief.

Signature: *Michael G. Mooney*

Printed name: Michael G. Mooney

Title: Engineer

Date: 04-07-01

Phone: 915-686-2027

OIL CONSERVATION DIVISION

Approved By: _____

Title: _____

Approval Date: _____

Expiration Date: _____

Conditions of Approval: 1 2001

Attached:

10412

mgp

DISTRICT I
P.O. Box 1980, Hobbs, NM 88241-1980

DISTRICT II
P.O. Drawer DD, Artesia, NM 88211-0719

DISTRICT III
1000 Rio Brazos Rd., Aztec, NM 87410

DISTRICT IV
P.O. BOX 2088, SANTA FE, N.M. 87504-2088

State of New Mexico
Energy, Minerals and Natural Resources Department

OIL CONSERVATION DIVISION
P.O. Box 2088
Santa Fe, New Mexico 87504-2088

Form C-102
Revised February 10, 1994
Submit to Appropriate District Office
State Lease - 4 Copies
Fee Lease - 3 Copies

WELL LOCATION AND ACREAGE DEDICATION PLAT

AMENDED REPORT

API Number 30-025-35508	Pool Code 47510	Pool Name Nadine : Drinkard-Abo
Property Code 27873	Property Name RUBY	
OGRID No. 021602	Operator Name TRILOGY OPERATING INC.	Well Number 1
		Elevation 3585'

Surface Location

UL or lot No.	Section	Township	Range	Lot Idn	Feet from the	North/South line	Feet from the	East/West line	County
N	24	19-S	38-E		330	SOUTH	2310	WEST	LEA

Bottom Hole Location If Different From Surface

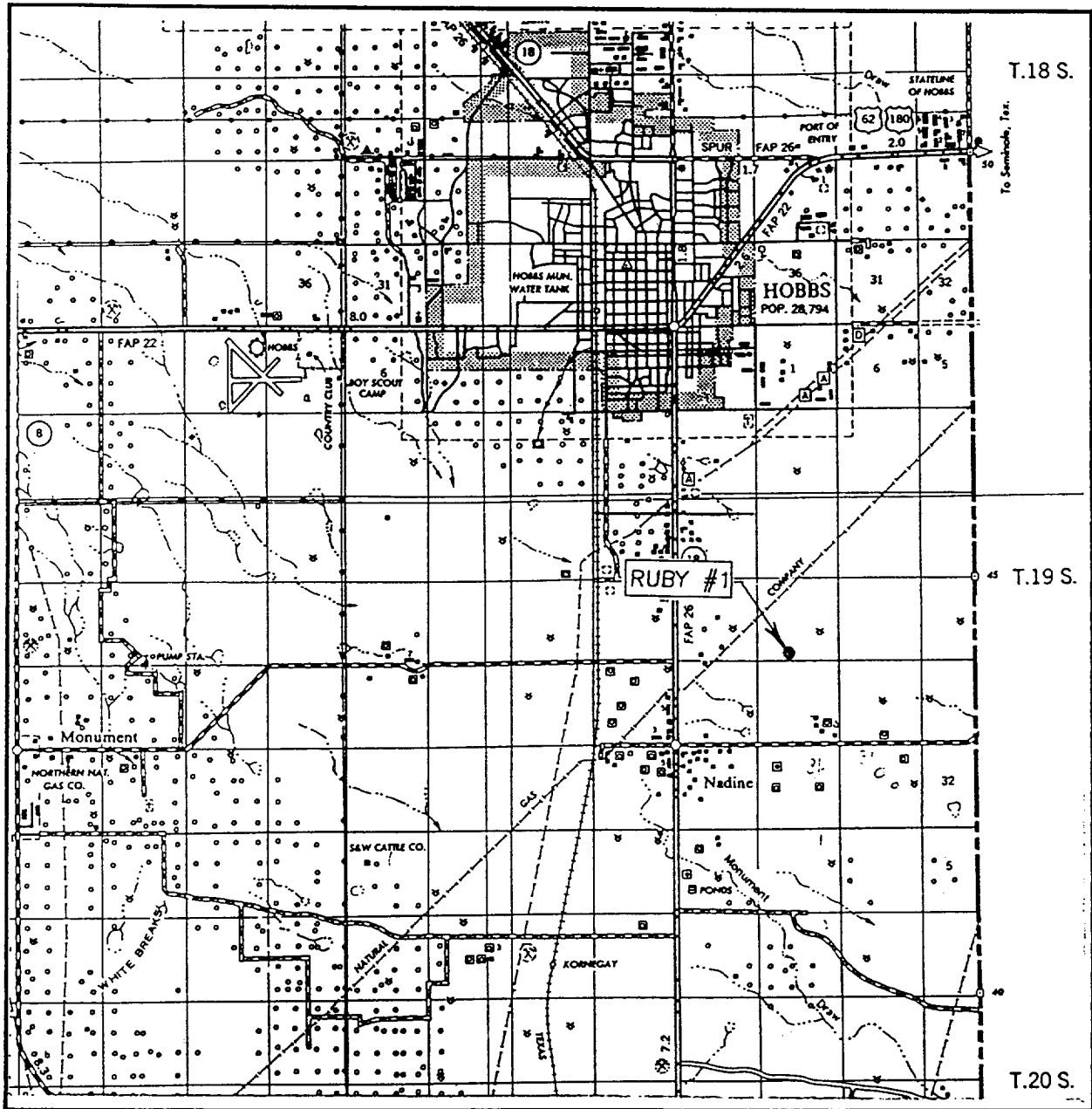
UL or lot No.	Section	Township	Range	Lot Idn	Feet from the	North/South line	Feet from the	East/West line	County

Dedicated Acres 40	Joint or Infill I	Consolidation Code	Order No.
------------------------------	-----------------------------	--------------------	-----------

NO ALLOWABLE WILL BE ASSIGNED TO THIS COMPLETION UNTIL ALL INTERESTS HAVE BEEN CONSOLIDATED OR A NON-STANDARD UNIT HAS BEEN APPROVED BY THE DIVISION

	<p>OPERATOR CERTIFICATION</p> <p>I hereby certify the the information contained herein is true and complete to the best of my knowledge and belief.</p> <p><i>Michael G. Mooney</i> Signature</p> <p>Michael G. Mooney Printed Name</p> <p>Engineer Title</p> <p>4/07/01 Date</p>
	<p>SURVEYOR CERTIFICATION</p> <p>I hereby certify that the well location shown on this plat was plotted from field notes of actual surveys made by me or under my supervision and that the same is true and correct to the best of my belief.</p> <p>MARCH 30, 2001 Date Surveyed</p> <p>AWB Signature & Seal</p> <p>Professional Surveyor</p> <p><i>Ronald E. Edson</i> Signature</p> <p>3239 Professional Surveyor No.</p> <p>3/30/01 Date</p> <p>81-11-0401 Registration No.</p>
	<p>Certificate No. RONALD E. EDSON 3239</p> <p>81-11-0401</p> <p>REGISTERED PROFESSIONAL SURVEYOR</p>
	<p>81-11-0401</p> <p>REGISTERED PROFESSIONAL SURVEYOR</p>

VICINITY MAP



SCALE: 1" = 2 MILES

SEC. 24 TWP. 19-S RGE. 38-E

SURVEY N.M.P.M.

COUNTY LEA

DESCRIPTION 330'FSL & 2310'FWL

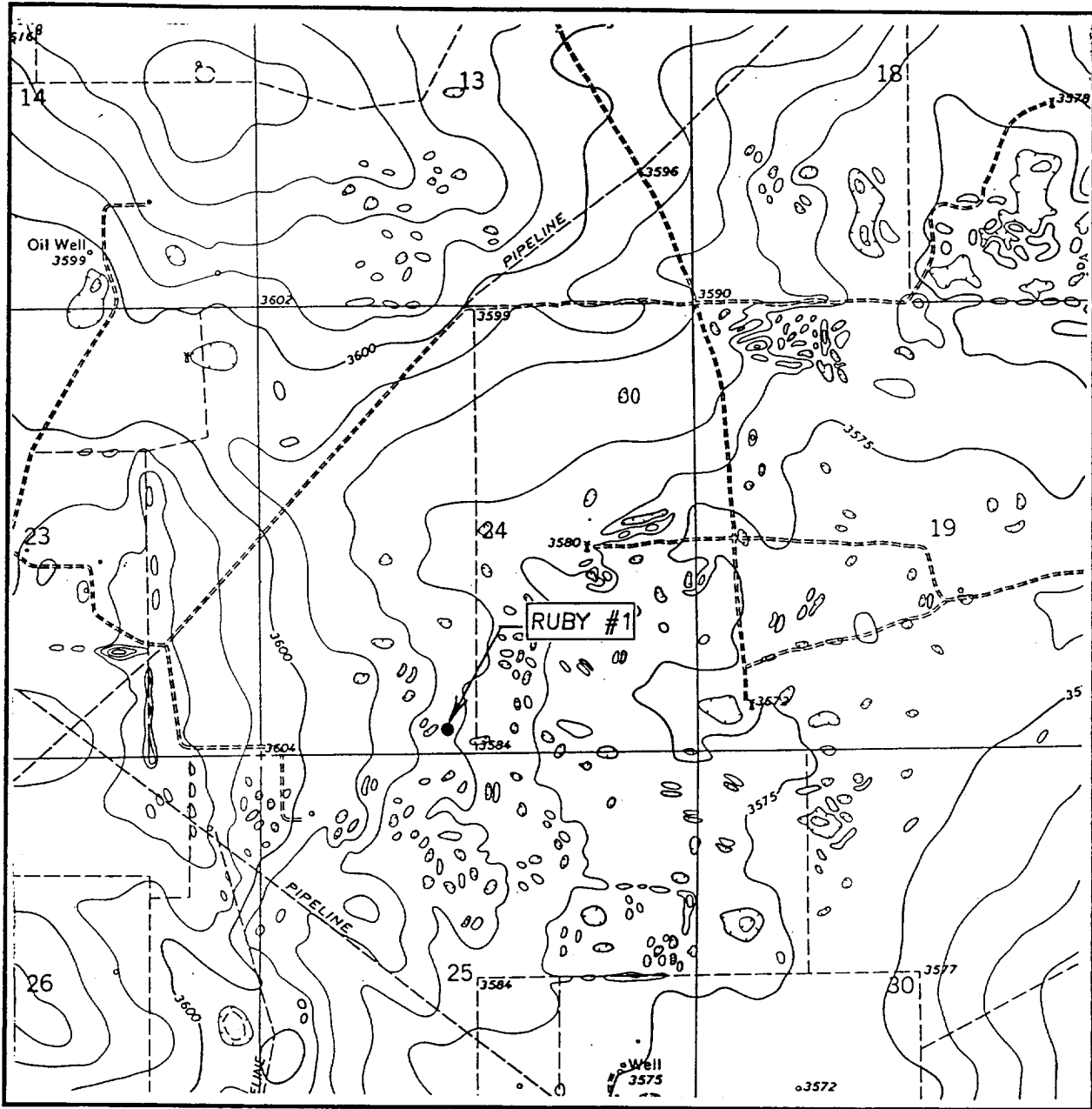
ELEVATION 3585'

OPERATOR TRILOGY OPERATING INC.

LEASE RUBY

JOHN WEST SURVEYING
HOBBS, NEW MEXICO
(505) 393-3117

LOCATION VERIFICATION MAP



SCALE: 1" = 2000'

CONTOUR INTERVAL: 5'
HOBBS EAST, N.M.

SEC. 24 TWP. 19-S RGE. 38-E

SURVEY _____ N.M.P.M. _____

COUNTY LEA

DESCRIPTION 330'FSL & 2310'FWL

ELEVATION 3585'

OPERATOR TRILOGY OPERATING INC.

LEASE RUBY

U.S.G.S. TOPOGRAPHIC MAP
HOBBS EAST, N.M.

JOHN WEST SURVEYING
HOBBS, NEW MEXICO
(505) 393-3117

ELF 6/1/01
ABOVE DATE DOES NOT
INDICATE WHEN
CONFIDENTIAL LOGS
WILL BE RELEASED

