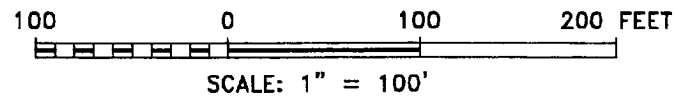
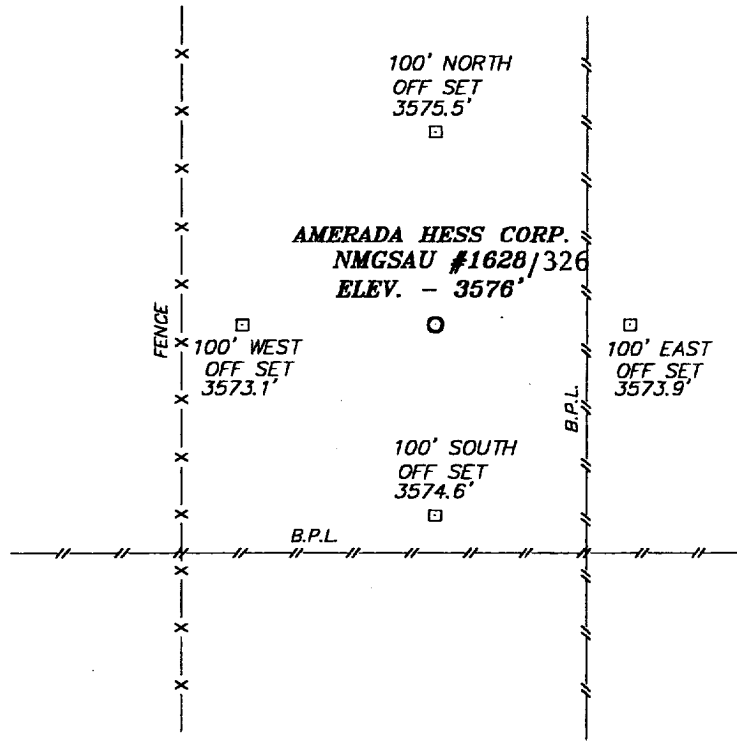


**SECTION 32, TOWNSHIP 19 SOUTH, RANGE 37 EAST, N.M.P.M.,  
LEA COUNTY, NEW MEXICO.**



**AMERADA HESS CORPORATION**

REF: NMGSAU #1628 / Well Pad Topo

NMGSAU #1628 LOCATED 2630' FROM THE  
SOUTH LINE AND 130' FROM THE WEST LINE OF  
SECTION 32, TOWNSHIP 19 SOUTH, RANGE 37 EAST,  
N.M.P.M., LEA COUNTY, NEW MEXICO.

**BASIN SURVEYS** P.O. BOX 1786 - HOBBS, NEW MEXICO

W.O. Number: 1483 | Drawn By: **K. GOAD**

Date: 05-11-2001 | Disk: KJG CD#5 - 1483A.DWG

Survey Date: 05-08-2001 | Sheet 1 of 1 Sheets