

District I
1625 N. French Dr., Hobbs, NM 88240
District II
811 S. 1st Street, Artesia, NM 88210
District III
1000 Rio Brazos Rd., Aztec, NM 87410
District IV
2040 South Pacheco, Santa Fe, NM 87505

Oil Conservation Division
2040 South Pacheco
Santa Fe, NM 87505

Submit to appropriate District Office
State Lease - 6 Copies
Fee Lease - 5 Copies

AMENDED REPORT

APPLICATION FOR PERMIT TO DRILL, RE-ENTER, DEEPEN, PLUGBACK, OR ADD A ZONE

| | | | | | |
|---|--|--|--|--|--|
| ¹ Operator Name and Address Amerada Hess Corporation P.O. Box 2040 | | HOUSTON, TEXAS 77252-2040 | | ² OGRID Number 000495 | |
| ⁴ Property Code 000135 | | ⁵ Property Name NORTH MONUMENT GRAYBURG SAN ANDRES UNIT BLK 11, NO 21 | | ³ API Number 30-025-35695 | |
| | | | | ⁶ Well No. 330 | |

⁷ Surface Location

| UL or lot no. | Section | Township | Range | Lot. Idn | Feet from the | North/South Line | Feet from the | East/West line | County |
|---------------|-----------|-------------|-------------|----------|---------------|------------------|---------------|----------------|------------|
| K | 29 | 19 S | 37 E | | 2530 | SOUTH | 1390 | WEST | LEA |

⁸ Proposed Bottom Hole Location If Different From Surface

| UL or lot no. | Section | Township | Range | Lot. Idn | Feet from the | North/South Line | Feet from the | East/West line | County |
|---------------|---------|----------|-------|----------|---------------|------------------|---------------|----------------|--------|
| | | | | | | | | | |

⁹ Proposed Pool 1

EUNICE-MONUMENT/GRAYBURG-SAN ANDRES

¹⁰ Proposed Pool 2

| | | | | |
|--|--|--|--|--|
| ¹¹ Work Type Code N | ¹² Well Type Code O | ¹³ Cable/Rotary R | ¹⁴ Lease Type Code S | ¹⁵ Ground Level Elevation 3610' |
| ¹⁶ Multiple NO | ¹⁷ Proposed Depth 4000' | ¹⁸ Formation GRYBERG-S.ANDRES | ¹⁹ Contractor PATTERSON | ²⁰ Spud Date 10/09/01 |

²¹ Proposed Casing and Cement Program

| Hole Size | Casing Size | Casing weight/foot | Setting Depth | Sacks of Cement | Estimated TOC |
|---------------|---------------|--------------------|---------------|-----------------|----------------|
| 11" | 8-5/8" | 24# | 1200' | 475 | SURFACE |
| 7-7/8" | 5-1/2" | 15.5# | 4000' | 750 | SURFACE |
| | | | | | |
| | | | | | |

²² Describe the proposed program. If this application is to DEEPEN or PLUG BACK, give the data on the present productive zone and proposed new productive zone. Describe the blowout prevention program, if any. Use additional sheets if necessary.

- DRILL AN 11" HOLE TO 1200' AND SET 1200' OF 24# 8-5/8" SURFACE CASING. CEMENT WITH 475 SK OF 65/35 POZ AND CIRCULATE TO SURFACE.**
- DRILL AN 7-7/8" HOLE TO 4000' AND SET 4000' OF 15.5# 5-1/2" PRODUCTION CASING. CEMENT WITH 750 SK OF CLASS "C" AND CIRCULATE TO SURFACE.**

Permit Expires 1 Year From Approval
Date Unless Drilling Underway

²³ I hereby certify that the information given above is true and complete to the best of my knowledge and belief.

Signature: *Ann Williams*

Printed name: **ANN WILLIAMS**

Title: **SR. STAFF ASSOCIATE**

Date: **09/07/01**

Phone: **713-609-4838**

OIL CONSERVATION DIVISION

Approved by: *[Signature]*

Title:

Approval Date: **SEP 11 2001**

Expiration Date:

Conditions of Approval:

Attached

[Handwritten initials]

DISTRICT I
1625 N. French Dr., Hobbs, NM 88240

DISTRICT II
811 South First, Artesia, NM 88210

DISTRICT III
1000 Rio Brazos Ed., Artesia, NM 87410

DISTRICT IV
2040 South Pacheco, Santa Fe, NM 87505

State of New Mexico
Energy, Minerals and Natural Resources Department

Form C-102
Revised March 17, 1999

Submit to Appropriate District Office
State Lease - 4 Copies
Fee Lease - 3 Copies

OIL CONSERVATION DIVISION

2040 South Pacheco
Santa Fe, New Mexico 87504-2088

AMENDED REPORT

WELL LOCATION AND ACREAGE DEDICATION PLAT

| | | | |
|-----------------------------------|---|--------------------|--|
| API Number 30-025-35695 | | Pool Code 23000 | Pool Name EUNICE-MONUMENT/GRAYBURG-SAN ANDRES |
| Property Code 000135 | Property Name NMGSAU BLK 11, NO. 21 | | Well Number 330 |
| OGRID No. 000495 | Operator Name AMERADA HESS CORPORATION | | Elevation 3610' |

Surface Location

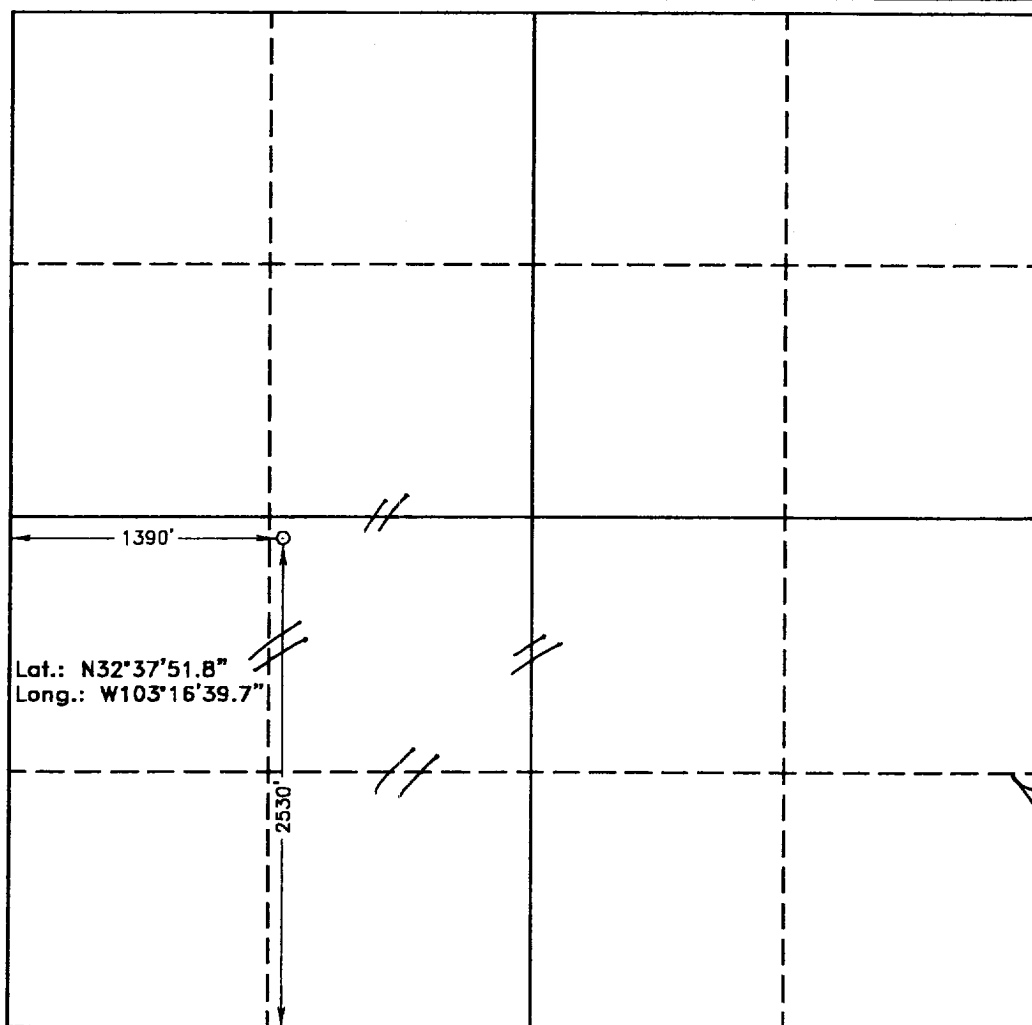
| UL or lot No. | Section | Township | Range | Lot Idn | Feet from the | North/South line | Feet from the | East/West line | County |
|---------------|---------|----------|-------|---------|---------------|------------------|---------------|----------------|--------|
| K | 29 | 19 S | 37 E | | 2530 | SOUTH | 1390 | WEST | LEA |

Bottom Hole Location If Different From Surface

| UL or lot No. | Section | Township | Range | Lot Idn | Feet from the | North/South line | Feet from the | East/West line | County |
|---------------|---------|----------|-------|---------|---------------|------------------|---------------|----------------|--------|
| | | | | | | | | | |

| | | | |
|-----------------------|----------------------|-------------------------|---|
| Dedicated Acres 40 | Joint or Infill Y | Consolidation Code U | Order No. UNITIZATION ORDER #R-1994 / WF ORDER #R-9596 |
|-----------------------|----------------------|-------------------------|---|

NO ALLOWABLE WILL BE ASSIGNED TO THIS COMPLETION UNTIL ALL INTERESTS HAVE BEEN CONSOLIDATED OR A NON-STANDARD UNIT HAS BEEN APPROVED BY THE DIVISION



OPERATOR CERTIFICATION

I hereby certify the the information contained herein is true and complete to the best of my knowledge and belief.

Ann Williams
Signature

ANN WILLIAMS
Printed Name

SR. STAFF ASSOCIATE
Title

09/07/01
Date

SURVEYOR CERTIFICATION

I hereby certify that the well location shown on this plat was plotted from field notes of actual surveys made by me or under my supervision, and that the same is true and correct to the best of my belief.

JUNE 11 2001
Date Surveyed

GARY L. JONES
Signature & Seal of Professional Surveyor

7977
Professional Surveyor No.

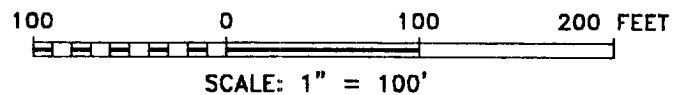
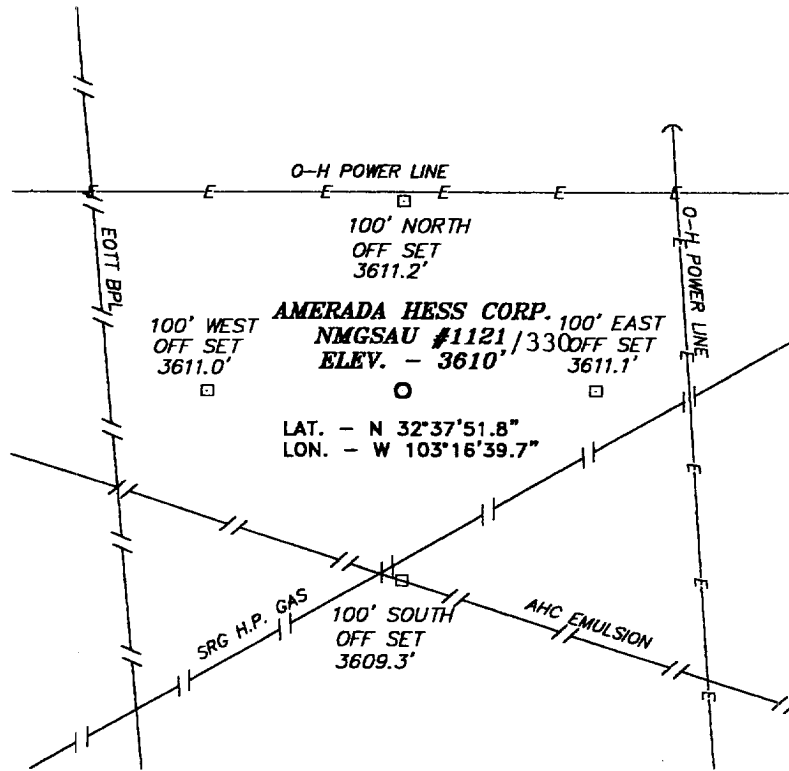
1567A
Certificate No.

Gary L. Jones
Professional Surveyor

7977
Professional Surveyor No.

BASIN SURVEYS

**SECTION 29, TOWNSHIP 19 SOUTH, RANGE 37 EAST, N.M.P.M.,
LEA COUNTY, NEW MEXICO.**



AMERADA HESS CORPORATION

REF: NMGSAU #1121 / Well Pad Topo

NMGSAU #1121 LOCATED 2530' FROM THE SOUTH LINE AND 1390' FROM THE WEST LINE OF SECTION 29, TOWNSHIP 19 SOUTH, RANGE 37 EAST, N.M.P.M., LEA COUNTY, NEW MEXICO.

BASIN SURVEYS P.O. BOX 1786 - HOBBS, NEW MEXICO

W.O. Number: 1567

Drawn By: **K. GOAD**

Date: 06-12-2001 | Disk: KIG CD#5 - 1567A.DWG

Survey Date: 06-01-2001

Sheet 1 of 1 Sheets

3000# B.O.P. STACK

