

DISTRICT I

P.O. Box 1980, Hobbs, NM 88240

DISTRICT II

P.O. Box Drawer DD, Artesia, NM 88210

DISTRICT III

1000 Rio Brazos Rd., Aztec, NM 87410

Oil CONSERVATION DIVISION

P.O. Box 2088

Santa Fe, New Mexico 87504-2088

WELL API NO.	30-025-35839
5. Indicate Type of Lease	STATE <input checked="" type="checkbox"/> FEE <input type="checkbox"/>
6. State Oil / Gas Lease No.	
7. Lease Name or Unit Agreement Name	JAYHAWK 35 STATE
8. Well No.	2
9. Pool Name or Wildcat	SKAGGS DRINKARD NW
10. Elevation (Show whether DF, RKB, RT,GR, etc.)	3600'

SUNDRY NOTICES AND REPORTS ON WELLS  
(DO NOT USE THIS FORM FOR PROPOSALS TO DRILL OR TO DEEPEN OR PLUG BACK TO DIFFERENT RESERVOIR. USE "APPLICATION FOR PERMI (FORM C-101) FOR SUCH PROPOSALS.

1. Type of Well: OIL WELL  GAS WELL  OTHER

2. Name of Operator: CHEVRON USA INC

3. Address of Operator: 15 SMITH ROAD, MIDLAND, TX 79705

4. Well Location  
Unit Letter E : 1650 Feet From The NORTH Line and 660 Feet From The WEST Line  
Section 35 Township 19-S Range 37-E NMPM LEA COUNTY

10. Elevation (Show whether DF, RKB, RT,GR, etc.) 3600'

11. Check Appropriate Box to Indicate Nature of Notice, Report, or Other Data

NOTICE OF INTENTION TO:		SUBSEQUENT REPORT OF:	
PERFORM REMEDIAL WORK <input type="checkbox"/>	PLUG AND ABANDON <input type="checkbox"/>	REMEDIAL WORK <input type="checkbox"/>	ALTERING CASING <input type="checkbox"/>
TEMPORARILY ABANDON <input type="checkbox"/>	CHANGE PLANS <input type="checkbox"/>	COMMENCE DRILLING OPERATION <input type="checkbox"/>	PLUG AND ABANDONMENT <input type="checkbox"/>
PULL OR ALTER CASING <input type="checkbox"/>		CASING TEST AND CEMENT JOB <input type="checkbox"/>	
OTHER: <u>INTENT TO DHC</u> <input checked="" type="checkbox"/>		OTHER: <u></u> <input type="checkbox"/>	

12. Describe Proposed or Completed Operations (Clearly state all pertinent details, and give pertinent dates, including estimated date of starting any proposed work) SEE RULE 1103.

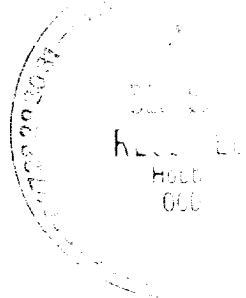
CHEVRON U.S.A. INC. STATES ITS INTENTION TO DOWN-HOLE COMMINGLE THE PRODUCTION FROM THE SUBJECT WELL IN THE SKAGGS DRINKARD NORTHWEST, AND THE MONUMENT TUBB POOLS, AS PRE-APPROVED BY Division Order R-11363. COMMINGLING WILL NOT REDUCE THE VALUE OF THE TOTAL REMAINING PRODUCTION. INSTEAD, COMMINGLING WILL ALLOW CHEVRON TO RECOVER ADDITIONAL RESERVES THAT WOULD NOT HAVE BEEN ECONOMICALLY VIABLE TO CAPTURE OTHERWISE.

THE SUBJECT WELL IS CURRENTLY PRODUCING FROM THE LOWER DRINKARD AT 20-25 BO, 150 MCF, & 8 BW. PRODUCTION SPLITS WILL BE DETERMINED FROM THIS TESTING.

THE PERFORATED INTERVALS FOR EACH POOL ARE AS FOLLOWS:

NW SKAGGS DRINKARD: 6960-7011' POOL CODE: 96768  
MONUMENT TUBB: 6634-6810' POOL CODE: 47090

OWNERSHIP AND PERCENTAGES BETWEEN THE DRINKARD & TUBB ARE IDENTICAL FOR THE SPECIFIED WELL AND LEASE.



I hereby certify that the information above is true and complete to the best of my knowledge and belief.  
SIGNATURE Denise Leake TITLE Regulatory Specialist DATE 11/15/2002  
TYPE OR PRINT NAME Denise Leake Telephone No. 915-687-7375

(This space for State Use)  
APPROVED \_\_\_\_\_ TITLE ORIGINAL SIGNED BY PAUL F. KAUTZ DATE DEC 30 2002  
CONDITIONS OF APPROVAL, IF ANY: \_\_\_\_\_ TITLE PETROLEUM ENGINEER

DISTRICT I

P.O. Box 1980, Hobbs, NM 88241-1980

DISTRICT II

P.O. Box Drawer DD, Artesia, NM 88211-0719

DISTRICT III

1000 Rio Brazos Rd., Aztec, NM 87410

DISTRICT IV

P.O. Box 2088, Santa Fe, NM 87504-2088

State of New Mexico  
Energy, Minerals and Natural Resources Department

# OIL CONSERVATION DIVISION

P.O. Box 2088  
Santa Fe, New Mexico 87504-2088

Form C-102

Revised February 10, 1999

Instructions on back  
Submit to Appropriate District Office

State Lease - 4 Copie

Fee Lease - 3 Copie

AMENDED REPORT

## WELL LOCATION AND ACREAGE DEDICATION PLAT

<sup>1</sup> API Number 30-025-35839	<sup>2</sup> Pool Code 47090	<sup>3</sup> Pool Name MONUMENT TUBB
<sup>4</sup> Property Code 29420	<sup>5</sup> Property Name JAYHAWK 35 STATE	<sup>6</sup> Well No. 2
<sup>7</sup> OGRID Number 4323	<sup>8</sup> Operator Name CHEVRON USA INC	<sup>9</sup> Elevation 3600'

### <sup>10</sup> Surface Location

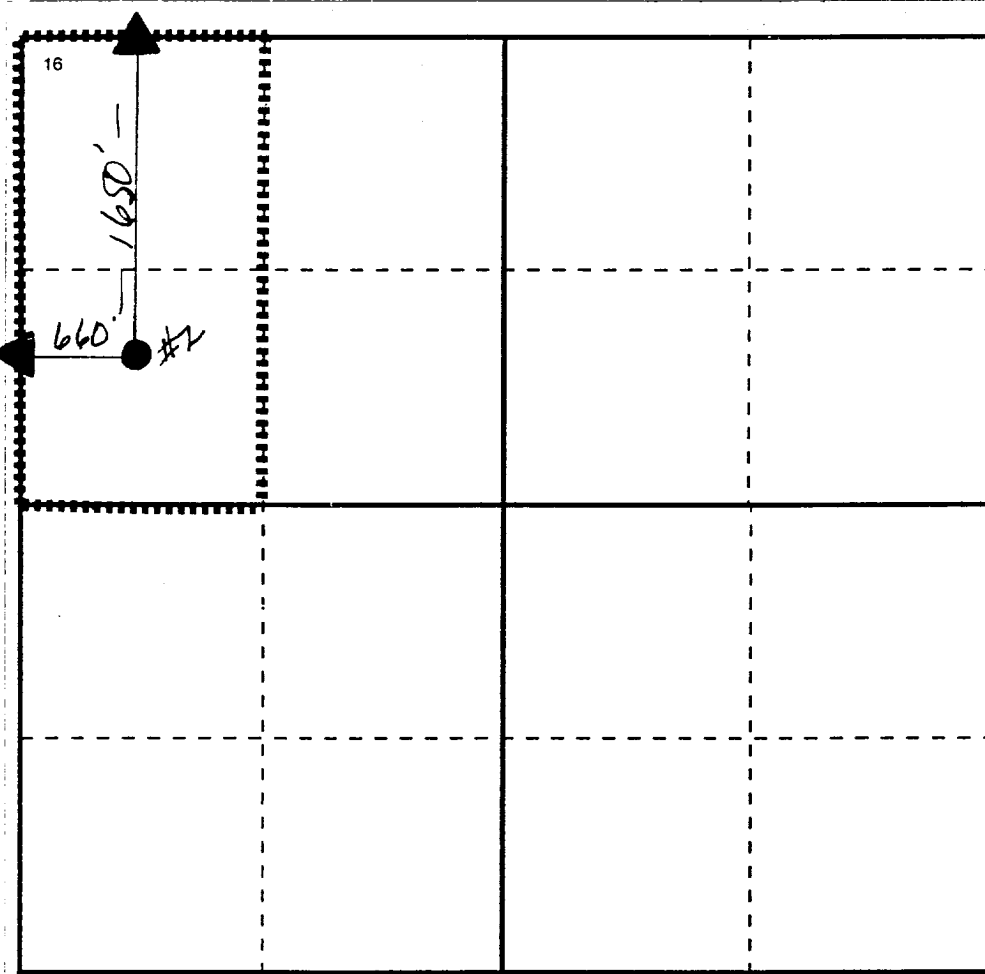
UI or lot no	Section	Township	Range	Lot.Idn	Feet From The	North/South Line	Feet From The	East/West Line	County
E	35	19-S	37-E		1650	NORTH	660	WEST	LEA

### <sup>11</sup> Bottom Hole Location If Different From Surface

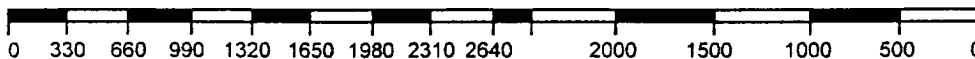
UI or lot no.	Section	Township	Range	Lot.Idn	Feet From The	North/South Line	Feet From The	East/West Line	County

<sup>12</sup> Dedicated Acre 80	<sup>13</sup> Joint or Infill No	<sup>14</sup> Consolidation Code	<sup>15</sup> Order No.
------------------------------------	-------------------------------------	----------------------------------	-------------------------

NO ALLOWABLE WILL BE ASSIGNED TO THIS COMPLETION UNTIL ALL INTERESTS HAVE BEEN CONSOLIDATED OR A NON-STANDARD UNIT HAS BEEN APPROVED BY THE DIVISION



<b>17 OPERATOR CERTIFICATION</b> I hereby certify that the information contained herein is true and complete to the best of my knowledge and belief
Signature <i>Denise Leake</i>
Printed Name Denise Leake
Positio Regulatory Specialist
Date 11/15/2002
<b>18 SURVEYOR CERTIFICATION</b> I hereby certify that the well location shown on this plat was plotted from field notes of actual surveys made by me or under my supervision, and that the same is true and correct to the best of my knowledge and belief.
Date Surveyed
Signature & Seal of Professional Surveyor
Certificate No.



DISTRICT I

P.O. Box 1980, Hobbs, NM 88241-1980

DISTRICT II

P.O. Box Drawer DD, Artesia, NM 88211-0719

DISTRICT III

1000 Rio Brazos Rd., Aztec, NM 87410

DISTRICT IV

P.O. Box 2088, Santa Fe, NM 87504-2088

State of New Mexico  
Energy, Minerals and Natural Resources Department

OIL CONSERVATION DIVISION

P.O. Box 2088  
Santa Fe, New Mexico 87504-2088

Form C-102

Revised February 10, 1999

Instructions on back

Submit to Appropriate District Office

State Lease - 4 Copie

Fee Lease - 3 Copie

AMENDED REPORT

WELL LOCATION AND ACREAGE DEDICATION PLAT

<sup>1</sup> API Number 30-025-35839	<sup>2</sup> Pool Code 96768	<sup>3</sup> Pool Name SKAGGS DRINKARD NW
<sup>4</sup> Property Code 29420	<sup>5</sup> Property Name JAYHAWK 35 STATE	
<sup>7</sup> OGRID Number 4323	<sup>8</sup> Operator Name CHEVRON USA INC	<sup>6</sup> Well No. 2
		<sup>9</sup> Elevation 3600'

<sup>10</sup> Surface Location

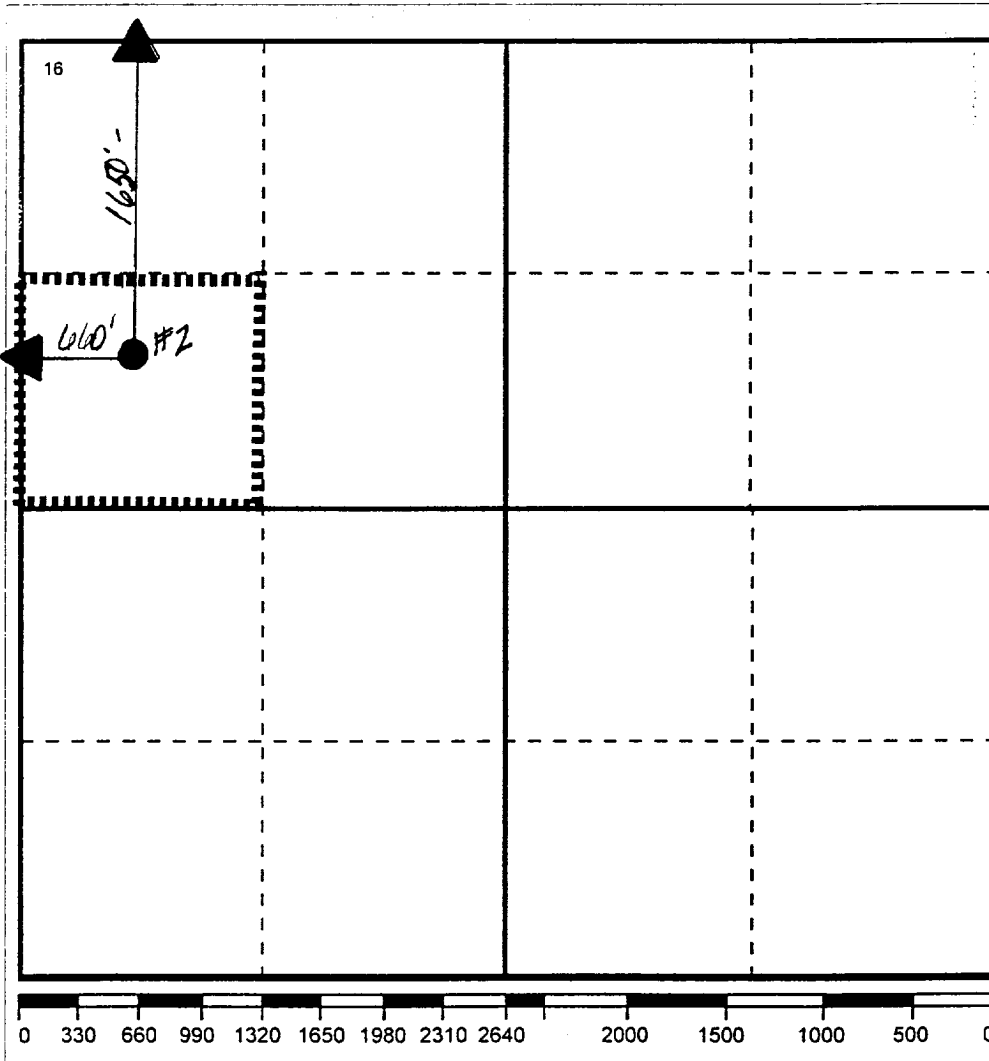
UI or lot no	Section	Township	Range	Lot.Idn	Feet From The	North/South Line	Feet From The	East/West Line	County
E	35	19-S	37-E		1650	NORTH	660	WEST	LEA

<sup>11</sup> Bottom Hole Location If Different From Surface

UI or lot no	Section	Township	Range	Lot.Idn	Feet From The	North/South Line	Feet From The	East/West Line	County

<sup>12</sup> Dedicated Acre 40	<sup>13</sup> Joint or Infill No	<sup>14</sup> Consolidation Code	<sup>15</sup> Order No.
------------------------------------	-------------------------------------	----------------------------------	-------------------------

NO ALLOWABLE WILL BE ASSIGNED TO THIS COMPLETION UNTIL ALL INTERESTS HAVE BEEN CONSOLIDATED OR A NON-STANDARD UNIT HAS BEEN APPROVED BY THE DIVISION



**17 OPERATOR CERTIFICATION**  
I hereby certify that the information contained herein is true and complete to the best of my knowledge and belief

Signature: *Denise Leake*  
Printed Name: Denise Leake  
Position: Regulatory Specialist  
Date: 11/15/2002

**18 SURVEYOR CERTIFICATION**  
I hereby certify that the well location shown on this plat was plotted from field notes of actual surveys made by me or under my supervision, and that the same is true and correct to the best of my knowledge and belief.

Date Surveyed:  
Signature & Seal of Professional Surveyor:  
Certificate No.: