

**NEW MEXICO OIL CONSERVATION COMMISSION  
WELL LOCATION AND ACREAGE DEDICATION PLAT**

Form C-102,  
Supersedes C-128  
Effective 1-4-65

All distances must be from the outer boundaries of the Section.

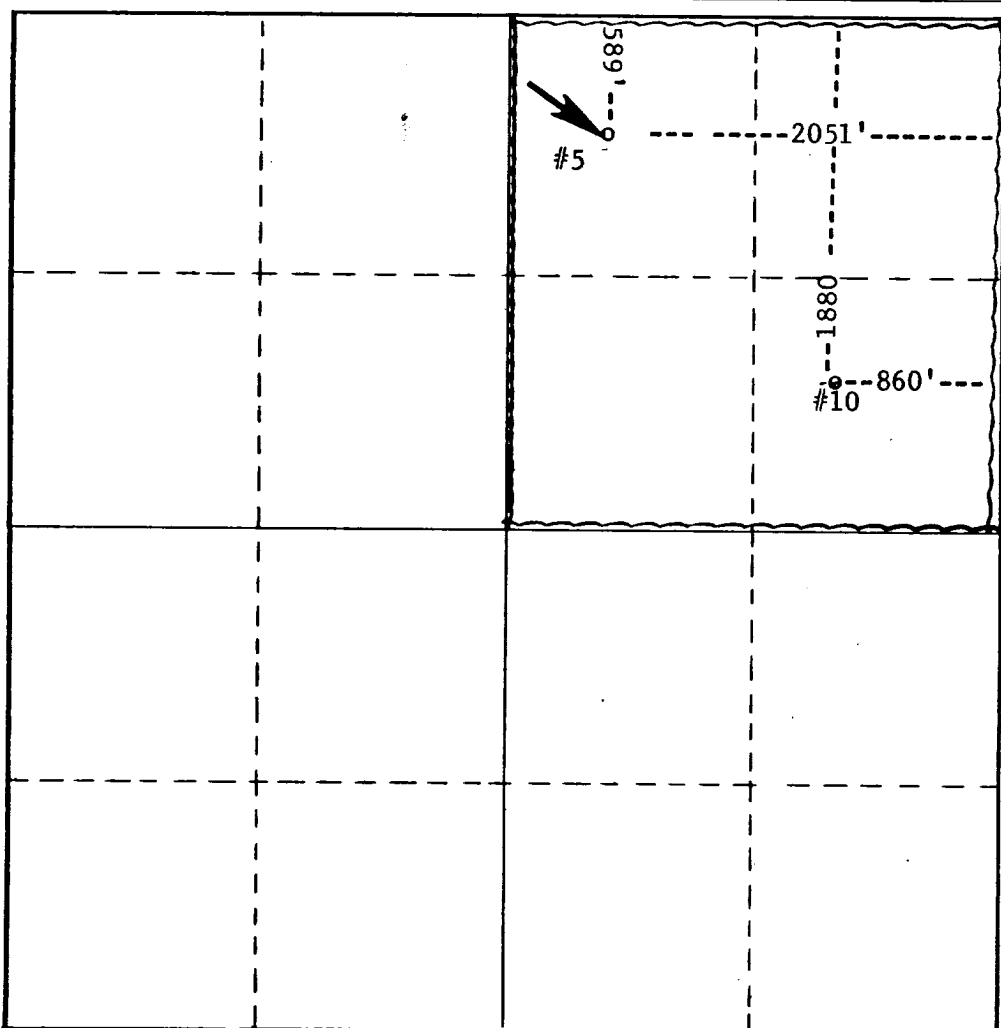
Operator <b>Amerada Hess Corporation</b>			Lease <b>E. Wood</b>		Well No. <b>5</b>
Unit Letter <b>B</b>	Section <b>22</b>	Township <b>22-S</b>	Range <b>37-E</b>	County <b>Lea</b>	
Actual Footage Location of Well: <b>589</b> feet from the <b>North</b> line and <b>2051</b> feet from the <b>East</b> line					
Ground Level Elev. <b>m</b>	Producing Formation <b>Blinebry Gas</b>		Pool <b>Blinebry Gas</b>		Dedicated Acreage: <b>160</b> Acres

1. Outline the acreage dedicated to the subject well by colored pencil or hachure marks on the plat below.
2. If more than one lease is dedicated to the well, outline each and identify the ownership thereof (both as to working interest and royalty).
3. If more than one lease of different ownership is dedicated to the well, have the interests of all owners been consolidated by communitization, unitization, force-pooling, etc?

☐ Yes    ☐ No    If answer is "yes," type of consolidation \_\_\_\_\_

If answer is "no," list the owners and tract descriptions which have actually been consolidated. (Use reverse side of this form if necessary.) \_\_\_\_\_

No allowable will be assigned to the well until all interests have been consolidated (by communitization, unitization, forced-pooling, or otherwise) or until a non-standard unit, eliminating such interests, has been approved by the Commission.



**CERTIFICATION**

*I hereby certify that the information contained herein is true and complete to the best of my knowledge and belief.*

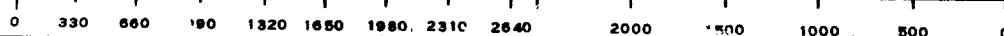
Name  
*MR. R. Blum*  
 Position  
**Supver., Admin. Services**  
 Company  
**Amerada Hess Corporation**  
 Date  
**9-15-75**

*I hereby certify that the well location shown on this plat was plotted from field notes of actual surveys made by me or under my supervision, and that the same is true and correct to the best of my knowledge and belief.*

Date Surveyed \_\_\_\_\_

Registered Professional Engineer  
and/or Land Surveyor

Certificate No. \_\_\_\_\_



SPD CSG	Re CMP	7-25-75	WELL CLASS: INIT DX FIN DO			
13 3/8" at 173' w/200 sx 8 5/8" at 2747' w/1550 sx 5 1/2" at 8116' w/650 sx			FORMATION	DATUM	FORMATION	DATUM
			TD 8116' (GRNT)	PBD 5985'		

IP (Blinebry) Perfs 3470-3579' @ 42 BOPD + 18 BLM. Pot based on  
24 hr test thru 3/4" chk, GOR 25,952, Grav NR, TP 150#

TEXT# OPB'S FILE 3574 WO

(Blinebry)

(Orig. Amerada Petroleum Corp., comp 10-21-47  
thru (Ellenburger) Perfs 7845-7940', OGD 8116',  
OPB 8040')

10-6-75

TD 8116'; PBD 5985'; Complete  
PB to 5985'

Perf (Blinebry) @ 5470', 5477', 5479', 5485',  
5490', 5500', 5501', 5506', 5514', 5533', 5535',  
5560', 5561', 5569', 5573', 5579' w/3 SPI

Acid (5470-5579') 3400 gals

Frac (5470-5579') 32,000 gals + 65,000# sd

10-11-75

COMPLETION ISSUED

10-2-12 NM