

NEW MEXICO OIL CONSERVATION COMMISSION

FORM C-128
Revised 5/1/57

WELL LOCATION AND ACREAGE DEDICATION PLAT

SEE INSTRUCTIONS FOR COMPLETING THIS FORM ON THE REVERSE SIDE

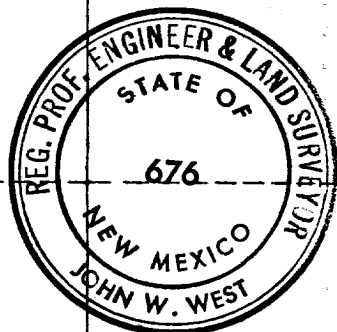
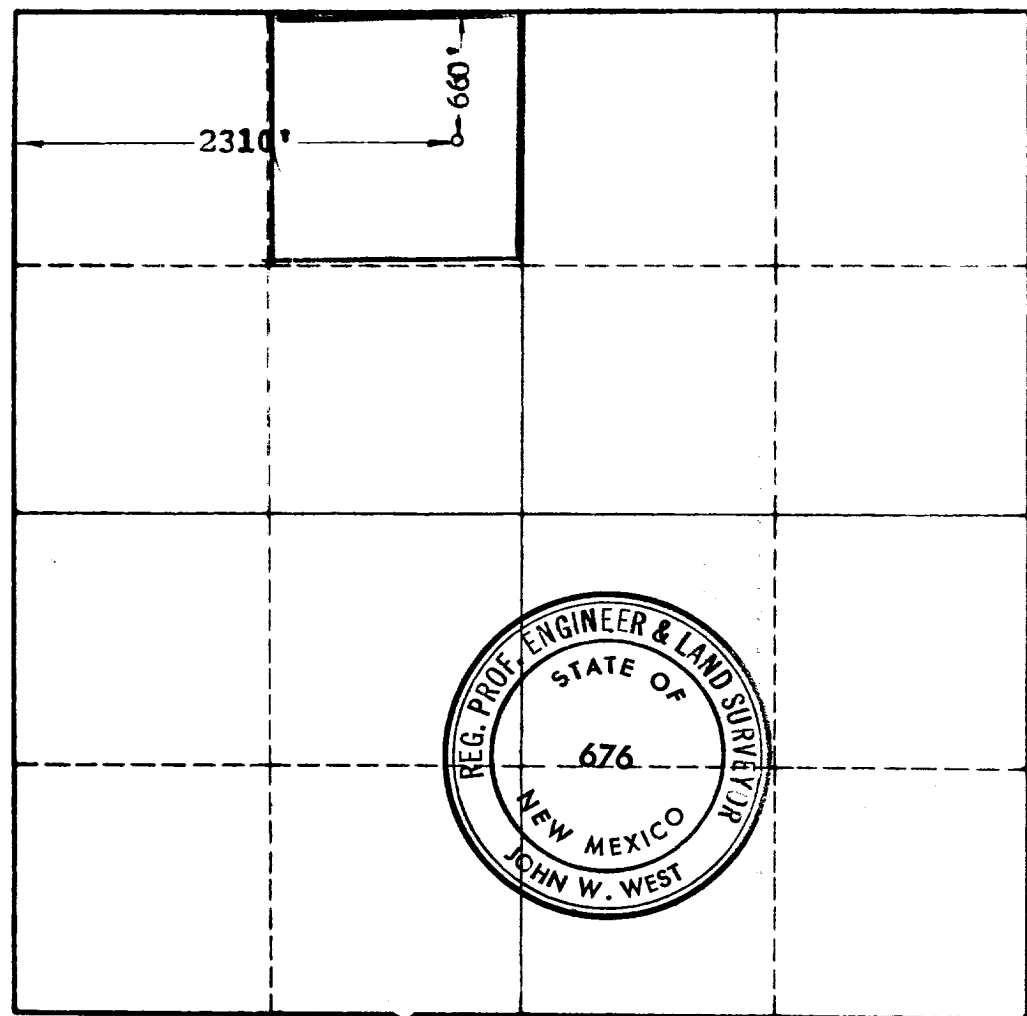
SECTION A

| | | | | |
|---|--|---------------------------------------|---------------------------------------|-----------------------|
| Operator Texas Pacific Coal & Oil Co. | | Lease 1960 MAY 10 1 AM 9:54 | | Well No. 91 |
| Unit Letter C | Section 15 | Township 23S | Range 36E | County Lea |
| Actual Footage Location of Well: 660 feet from the North line and 2310 feet from the West line | | | | |
| Ground Level Elev. | Producing Formation 7-Rivers | Pool Langlie-Mattix | Dedicated Acreage: 40 Acres | |

1. Is the Operator the only owner in the dedicated acreage outlined on the plat below? YES NO ("Owner" means the person who has the right to drill into and to produce from any pool and to appropriate the production either for himself or for himself and another. (65-3-29 (e) NMSA 1935 Comp.)
2. If the answer to question one is "no," have the interests of all the owners been consolidated by communitization agreement or otherwise? YES NO . If answer is "yes," Type of Consolidation _____
3. If the answer to question two is "no," list all the owners and their respective interests below:

| Owner | Land Description |
|-------|------------------|
| | |

SECTION B



CERTIFICATION

I hereby certify that the information in SECTION A above is true and complete to the best of my knowledge and belief.

Name: *[Signature]*
Position: **Manager of Production**
Company: **Texas Pacific Coal & Oil Co.**

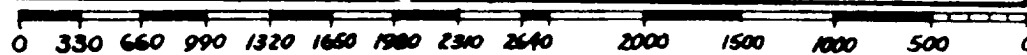
Date: **May 9, 1960**

I hereby certify that the well location shown on the plat in SECTION B was plotted from field notes of actual surveys made by me or under my supervision, and that the same is true and correct to the best of my knowledge and belief.

Date Surveyed: **5/7/60**

Registered Professional Engineer and/or Land Surveyor, **JOHN W. WEST**

[Signature]
Certificate No. **N.M. - P.E. & L.S. NO. 676**



District I
1625 N. French Dr., Hobbs. NM 88240
District II
PO Drawer DD, Artesia, NM 88211-0719
District III
1000 Rio Brazos Rd. Aztec, NM 87410
District IV
PO Box 2088, Santa Fe. NM 87504-2088

State of New Mexico
Energy, Minerals & Natural Resources Department

OIL CONSERVATION DIVISION
PO Box 2088
Santa Fe, NM 87504-2088

Form C-102
Revised February 21, 1994
instructions on back
Submit to Appropriate District Office
State Lease - 4 Copies
Fee Lease - 3 Copies

AMENDED REPORT

WELL LOCATION AND ACREAGE DEDICATION PLAT

| | | | | | |
|-----------------------------|--|-------------------------------------|--|---|---------------------|
| API Number 30-025- 10721 | | 2 Pool Code 79240 | | 3 Pool Name Jalmat: Tan-Yates-7 rvrs (Pro Gas) | |
| 4 Property Code 24669 | | 5 Property Name State "A" A/C 1 | | | 6 Well Number 91 |
| 7 OGRID No. 162791 | | 8 Operator Name Raptor Resources | | | 9 Elevation |

10 Surface Location

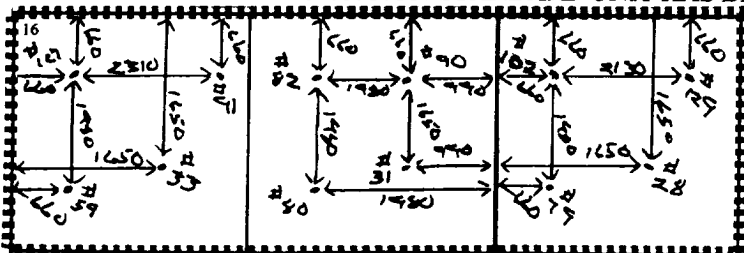
| UL or lot no. | Section | Township | Range | Lot Idn | Feet from the | North/South line | Feet from the | East/West line | County |
|---------------|---------|----------|-------|---------|---------------|------------------|---------------|----------------|--------|
| C | 15 | 23S | 36E | | 660 | North | 2310 | West | Lea |

11 Bottom Hole Location If Different From Surface

| UL or lot no. | Section | Township | Range | Lot Idn | Feet from the | North/South line | Feet from the | East/West line | County |
|---------------|---------|----------|-------|---------|---------------|------------------|---------------|----------------|--------|
| | | | | | | | | | |

| | | | |
|---------------------------|-------------------|-----------------------|--------------|
| 12 Dedicated Acres 480 | 13 Joint or Infil | 14 Consolidation Code | 15 Order No. |
|---------------------------|-------------------|-----------------------|--------------|

NO ALLOWABLE WILL BE ASSIGNED TO THIS COMPLETION UNTIL ALL INTERESTS HAVE BEEN CONSOLIDATED OR A NON-STANDARD UNIT HAS BEEN APPROVED BY THE DIVISION



| | | | |
|------------|--|------------|--|
| Section 15 | | Section 14 | |
| | | | |
| | | | |
| | | | |

17 OPERATOR CERTIFICATION

I hereby certify that the information contained herein is true and complete to the best of my knowledge and belief

Bill R. Keathly

Signature
Bill R. Keathly

Printed Name
Regulatory Agent

Title
5-8-00

Date

18 SURVEYOR CERTIFICATION

I hereby certify that the well location shown on this plat was plotted from field notes of actual surveys made by me or under my supervision, and that the same is true and correct to the best of my belief.

Date of Survey

Signature and Seal of Professional Surveyor:

Certificate Number

District I
PO Box 1980, Hobbs, NM 88241 1980

State of New Mexico
Energy, Minerals & Natural Resources Department

Revised February 21, 1994
instructions on back

District II
PO Drawer DD, Artesia, NM 88211-0719

OIL CONSERVATION DIVISION

Submit to Appropriate District Office

District III
1000 Rio Brazos Rd. Aztec, NM 87410

PO Box 2088
Santa Fe, NM 87504-2088

State Lease - 4 Copies
Fee Lease - 3 Copies

District IV
PO Box 2088, Santa Fe, NM 87504-2088

AMENDED REPORT

WELL LOCATION AND ACREAGE DEDICATION PLAT

| | | | | | |
|----------------------------|--|---|--|--|---------------------|
| API Number 30-025-10721 | | 2 Pool Code 79240 | | 3 Pool Name Jalmat, Tnsl, Yts, 7-Rivers (Pro Gas) | |
| 4 Property Code 24669 | | 5 Property Name State 'A' A/C 1 | | | 6 Well Number 91 |
| 7 OGRID No. 162791 | | 8 Operator Name Raptor Resources, Inc, | | | 9 Elevation |

10 Surface Location

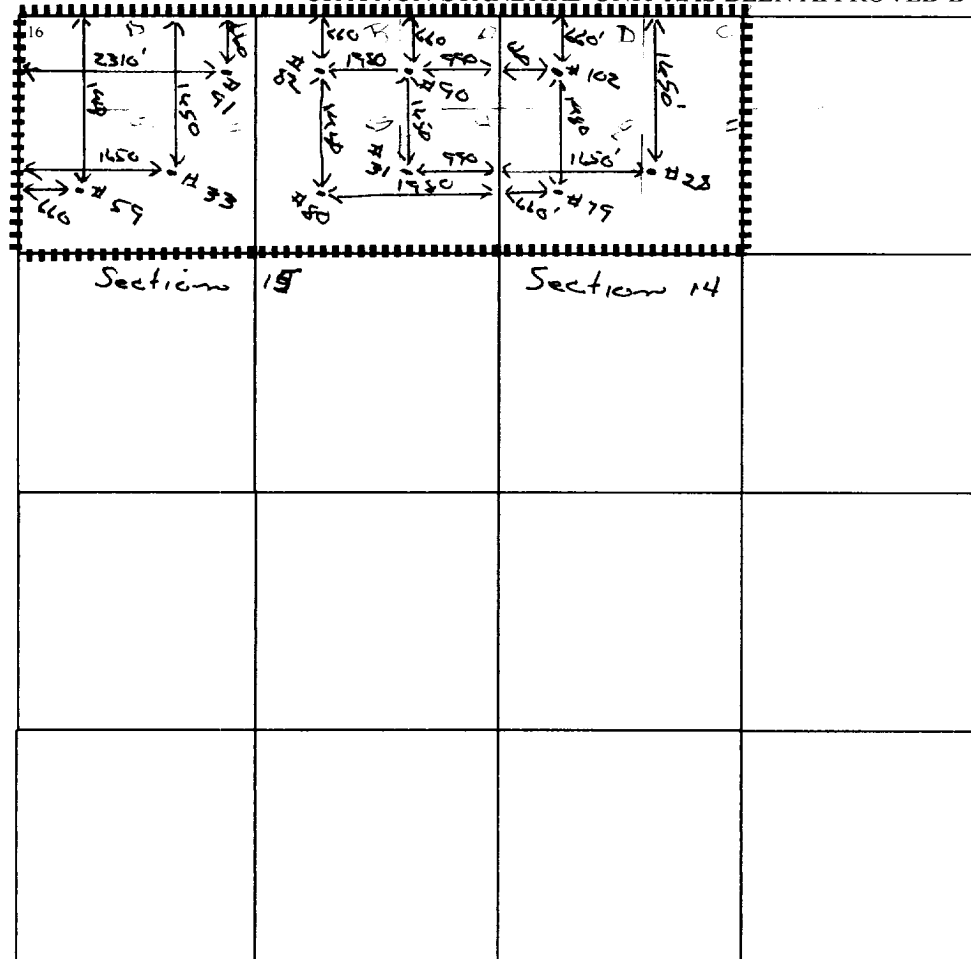
| UL or lot no. | Section | Township | Range | Lot Idn | Feet from the | North/South line | Feet from the | East/West line | County |
|---------------|---------|----------|-------|---------|---------------|------------------|---------------|----------------|--------|
| C | 15 | 23S | 36E | | 660 | North | 2310 | West | Lea |

11 Bottom Hole Location If Different From Surface

| UL or lot no. | Section | Township | Range | Lot Idn | Feet from the | North/South line | Feet from the | East/West line | County |
|---------------|---------|----------|-------|---------|---------------|------------------|---------------|----------------|--------|
| | | | | | | | | | |

| | | | |
|---------------------------|--------------------|-----------------------|--|
| 12 Dedicated Acres 480 | 13 Joint or Infill | 14 Consolidation Code | 15 Order No. NSL-273D-C(50) Applied For |
|---------------------------|--------------------|-----------------------|--|

NO ALLOWABLE WILL BE ASSIGNED TO THIS COMPLETION UNTIL ALL INTERESTS HAVE BEEN CONSOLIDATED OR A NON-STANDARD UNIT HAS BEEN APPROVED BY THE DIVISION



17 OPERATOR CERTIFICATION

I hereby certify that the information contained herein is true and complete to the best of my knowledge and belief

Bill R. Keathly
Signature
Bill R. Keathly
Printed Name
Regulatory Agent - Raptor
Title
11-18-99
Date

18 SURVEYOR CERTIFICATION

I hereby certify that the well location shown on this plat was plotted from field notes of actual surveys made by me or under my supervision, and that the same is true and correct to the best of my belief.

Date of Survey
Signature and Seal of Professional Surveyor:
Certificate Number

11/17/99