

UNITED STATES DEPARTMENT OF THE INTERIOR
GEOLOGICAL SURVEY

APPLICATION FOR PERMIT TO DRILL, DEEPEN, OR PLUG BACK

1a. TYPE OF WORK

DRILL ☒DEEPEN ☐PLUG BACK ☐

b. TYPE OF WELL

OIL
WELL ☒GAS
WELL ☐

OTHER

SINGLE
ZONE ☐MULTIPLE
ZONE ☒

2. NAME OF OPERATOR

Texaco Inc.

3. ADDRESS OF OPERATOR

P. O. Box 3109, Midland, Texas

4. LOCATION OF WELL (Report location clearly and in accordance with any State requirements.)

At surface

1980'FNL&1650'FWL, Section 28

At proposed prod. zone

14. DISTANCE IN MILES AND DIRECTION FROM NEAREST TOWN OR POST OFFICE*

7 miles Southeast of Eunice, New Mexico

15. DISTANCE FROM PROPOSED*

LOCATION TO NEAREST
PROPERTY OR LEASE LINE, FT.
(Also to nearest drlg. unit line, if any)

1193'

16. NO. OF ACRES IN LEASE

1855.12

17. NO. OF ACRES ASSIGNED
TO THIS WELL

46.11

18. DISTANCE FROM PROPOSED LOCATION*
TO NEAREST WELL, DRILLING COMPLETED,
OR APPLIED FOR, ON THIS LEASE, FT.

1320'

19. PROPOSED DEPTH

7330'

20. ROTARY OR CABLE TOOLS

Rotary

21. ELEVATIONS (Show whether DF, RT, GR, etc.)

Not available

22. APPROX. DATE WORK WILL START*

At once

23.

PROPOSED CASING AND CEMENTING PROGRAM

| SIZE OF HOLE | SIZE OF CASING | WEIGHT PER FOOT | SETTING DEPTH | QUANTITY OF CEMENT |
|--------------|-------------------|------------------|---------------|----------------------------|
| 11" | 8 5/8" | 24#, 17.28#, 20# | 1400' | 530 *250% of vol. to circ. |
| 7 7/8" | 2 7/8" (Tubb) | 6.5# | 7330' | 1000*150% of vol. to base |
| | 2 7/8" (Drinkard) | 6.5# | 7330' | of salt section |

*Cement with 430 sx TLW 110% mix water, 12.0#/gal followed by 100 sx Class "C" neat 14.8#/gal. with 1% caci. **Cement with 650 sx TLW, 110% mix water, 12.0#/gal. followed by 350 sx Incon 4% gel. Use FRA in first 200 sx TLW for 10 min. turbulent flow period. Mixing time - 52 min. Displacement time - 14 min., pump plugs down w/500 gal. acet.

1-Drinkard 1. Perforate 15 selective intervals from 7000' to 7290' w/1jspi. 2. Breakdown with acetic acid. 3. Acidize with 10,000 gal 15% NE acid in 5 stages w/3 ball sealers per stage.

1-Tubb 1. Perforate 10 selective intervals from 6375' to 6570' w/1jspi. 2. Breakdown with acetic acid. 3. Acidize with 1500 gal. 15% NE acid in 5 stages w/2 ball sealers per stage. 4. Frac w/5000 gal gelled lse. crude w/ 1/20# adomite followed by 10,000 gal. gelled lse. crude with 1/40# adomite & 1# sand per gal.

FORMATION TOPS EXPECTED

Anhydrite

1370'

Tubb

6375'

Base of Salt

2620'

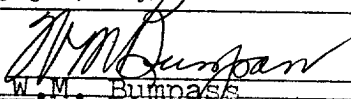
Total Depth

7330'

IN ABOVE SPACE DESCRIBE PROPOSED PROGRAM: If proposal is to deepen or plug back, give data on present productive zone and proposed new productive zone. If proposal is to drill or deepen directionally, give pertinent data on subsurface locations and measured and true vertical depths. Give blowout preventer program, if any.

24.

SIGNED



TITLE Senior Civil Engineer

DATE 8/26/65

(This space for Federal or State office use)

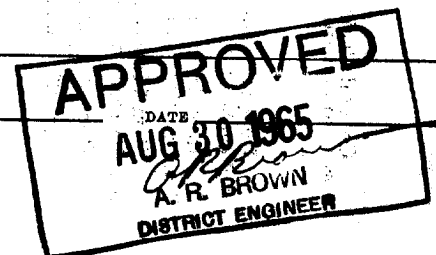
PERMIT NO.

APPROVAL DATE

APPROVED BY

TITLE

CONDITIONS OF APPROVAL, IF ANY:



*See Instructions On Reverse Side

NEW MEXICO OIL CONSERVATION COMMISSION
WELL LOCATION AND ACREAGE DEDICATION PLAT

Form C-102
Supersedes C-128
Effective 1-1-65

All distances must be from the outer boundaries of the Section.

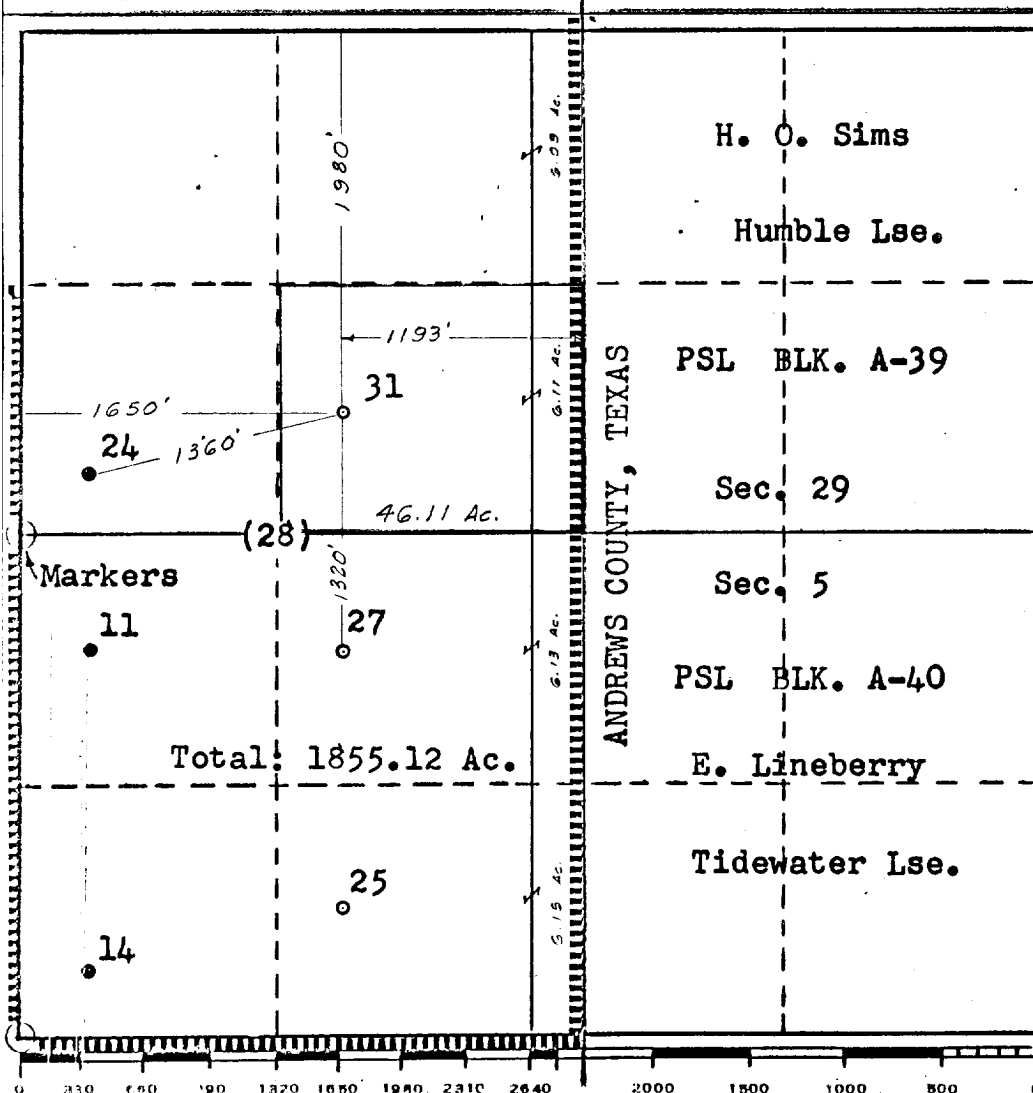
| | | | | |
|---|---|--|------------------------------------|--|
| Operator TEXACO Inc. | | Lease A. H. Blinebry NCT-1 Fed | | Well No. 31 |
| Unit Letter F | Section 28 | Township 22 South | Range 38 East | County Lea |
| Actual Footage Location of Well: 1980 feet from the North line and 1650 feet from the West line Sec. 28 | | | | |
| Ground Level Elev: Not Available | Producing Formation Tubb & Drinkard | | Pool Tubb & Drinkard | Dedicated Acreage: 46.11 Acres |

1. Outline the acreage dedicated to the subject well by colored pencil or hachure marks on the plat below.
2. If more than one lease is dedicated to the well, outline each and identify the ownership thereof (both as to working interest and royalty).
3. If more than one lease of different ownership is dedicated to the well, have the interests of all owners been consolidated by communitization, unitization, force-pooling, etc?

☐ Yes ☐ No If answer is "yes," type of consolidation _____

If answer is "no," list the owners and tract descriptions which have actually been consolidated. (Use reverse side of this form if necessary.) _____

No allowable will be assigned to the well until all interests have been consolidated (by communitization, unitization, forced-pooling, or otherwise) or until a non-standard unit, eliminating such interests, has been approved by the Commission.



CERTIFICATION

I hereby certify that the information contained herein is true and complete to the best of my knowledge and belief.

Name
W. M. Bumpass
 Position
Senior Civil Engineer
 Company
TEXACO Inc.
 Date
8/26/65

I hereby certify that the well location shown on this plat was plotted from field notes of actual surveys made by me or under my supervision, and that the same is true and correct to the best of my knowledge and belief.

Date Surveyed
8/24/65
 Registered Professional Engineer and/or Land Surveyor
W. M. Bumpass
 Certificate No.
4882