

NO. OF COPIES RECEIVED	
DISTRIBUTION	
SANTA FE	
FILE	
U.S.G.S.	
LAND OFFICE	
OPERATOR	

NEW MEXICO OIL CONSERVATION COMMISSION

Form O-100
Revised 10-65

5A. Indicate Type of Lease
STATE FEE
 5B. State Oil & Gas Lease No.

APPLICATION FOR PERMIT TO DRILL, DEEPEN, OR PLUG BACK

1a. Type of Work
 b. Type of Well DRILL DEEPEN PLUG BACK
 OIL WELL GAS WELL OTHER SINGLE ZONE MULTIPLE ZONE
 2. Name of Operator
William F. Grauten
 3. Address of Operator
c/o Oil Reports & Gas Services, Inc., Box 763, Hobbs, N.M. 88240
 4. Location of Well UNIT LETTER **L** LOCATED **1666** FEET FROM THE **South** LINE
 AND **330** FEET FROM THE **West** LINE OF SEC. **16** TWP. **26 S** RGE. **32 E** NMPM
 7. Unit Agreement Name
 8. Term of Lease (Years)
State
 9. Well No.
1
 10. Field name, city, or place
East Mason Delaware
 11. County
Lea
 12. Proposed Depth
4550
 13A. Formation
Delaware
 13B. Rotary or C.T.
Rotary
 14. Elevations (Show whether DF, RT, etc.)
3107 Gr
 15A. Kind & Value Plug. Bond
1 well bond
 16. Drilling Contractor
Cactus
 17. Approx. Date Work will start
7/7/75

PROPOSED CASING AND CEMENT PROGRAM

SIZE OF HOLE	SIZE OF CASING	WEIGHT PER FOOT	SETTING DEPTH	SACKS OF CEMENT	EST. TOP
12 1/4	8 5/8	24 1/2	350	250	circ
7 7/8	4 1/2	9.5 1/2	4550	75	4125

BOP: 10" 900 series Cameron "SS" double hydraulic with Payne closing unit.

Mud: Fresh water to 350'; brine water to 4300'; salt gel with starch 4300' to total depth.

Completion: Conventional perforation and treatment.

APPROVAL VALID FOR 90 DAYS UNLESS DRILLING COMMENCED,

EXPIRES 10/9/75

IN ABOVE SPACE DESCRIBE PROPOSED PROGRAM; IF PROPOSAL IS TO DEEPEN OR PLUG BACK, GIVE DATA ON PRESENT PRODUCTIVE ZONE AND PROPOSED NEW PRODUCTIVE ZONE. GIVE BLOWOUT PREVENTER PROGRAM, IF ANY.

I hereby certify that the information above is true and complete to the best of my knowledge and belief.

Signed William F. Grauten Title Agent Date 7/3/75

(This space for State Use)

APPROVED BY Leslie A. Clements TITLE Oil DATE 7/3/75

CONDITIONS OF APPROVAL, IF ANY:

NEW MEXICO OIL CONSERVATION COMMISSION
WELL LOCATION AND ACREAGE DEDICATION FORM

Form C-102
Supersedes C-128
Effective 1-1-65

All distances must be from the outer boundaries of the Section.

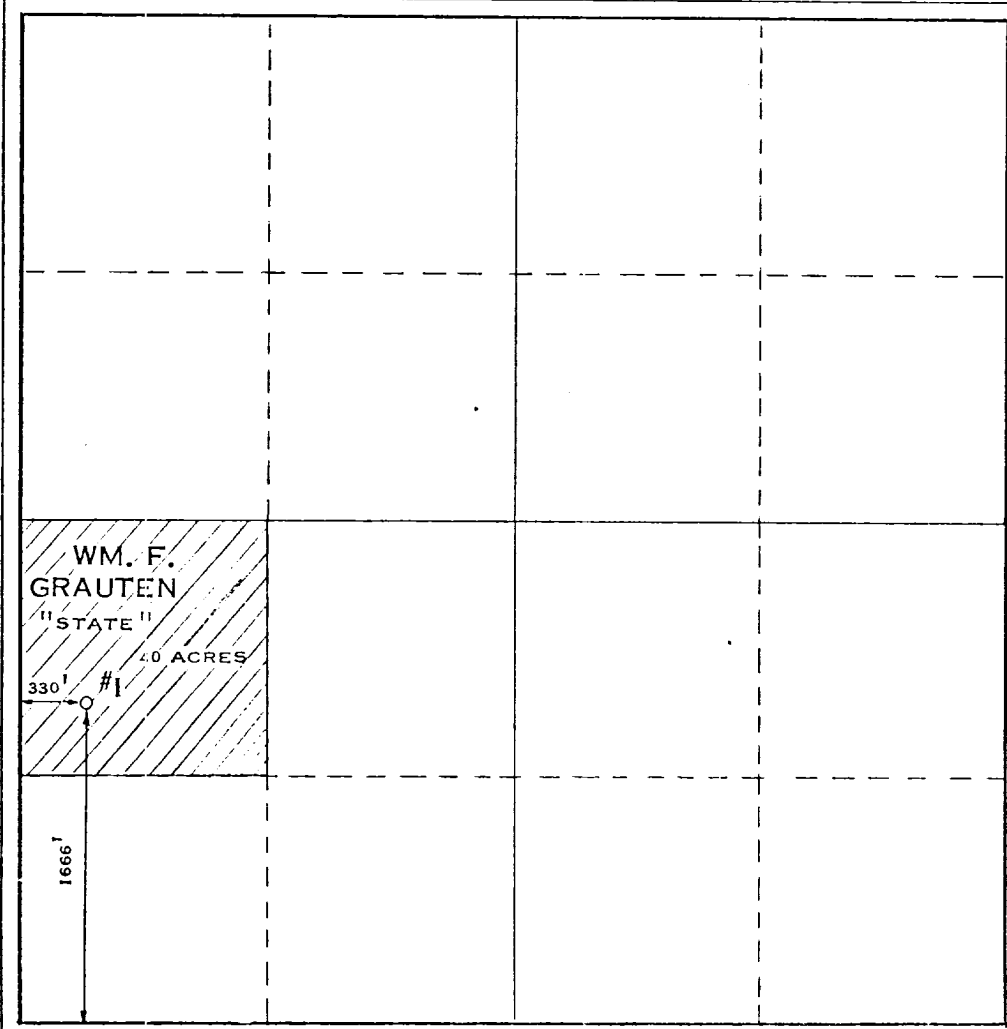
Operator WM. F. GRAUTEN		Lease STATE			Well No. 1
Unit Letter "L"	Section 16	Township 26-S	Range 32-E	County LEA	
Actual Footage Location of Well: 1666 feet from the SOUTH line and 330 feet from the WEST line					
Ground Level Elev. 3102	Producing Formation DELAWARE SAND	Pool EAST MASON FIELD		Dedicated Acreage: 40 Acres	

- Outline the acreage dedicated to the subject well by colored pencil or hachure marks on the plat below.
- If more than one lease is dedicated to the well, outline each and identify the ownership thereof (both as to working interest and royalty).
- If more than one lease of different ownership is dedicated to the well, have the interests of all owners been consolidated by communitization, unitization, force-pooling, etc?

Yes No If answer is "yes," type of consolidation _____

If answer is "no," list the owners and tract descriptions which have actually been consolidated. (Use reverse side of this form if necessary.) _____

No allowable will be assigned to the well until all interests have been consolidated (by communitization, unitization, force-pooling, or otherwise) or until a non-standard unit, eliminating such interests, has been approved by the Commission.



CERTIFICATION

I hereby certify that the information contained herein is true and complete to the best of my knowledge and belief.

Name: *William F. Grauten*
 Position: *Agent*
 Agent
 Company: *William F. Grauten*
 Date: *July 3, 1975*

I hereby certify that the well location shown on this plat was plotted from field notes of actual surveys made by me or under my supervision, and that the same is true and correct to the best of my knowledge and belief.

Date Surveyed: *JULY 1, 1975*
 Registered Professional Engineer and/or Land Surveyor
Max A. Schumann Jr.
 MAX A. SCHUMANN JR.
 Certificate No. **1510**

