

NEW MEXICO OIL CONSERVATION COMMISSION
WELL LOCATION AND ACREAGE DEDICATION PLAT

Form C-102
Supersedes C-128
Effective 1-1-65

All distances must be from the outer boundaries of the Section

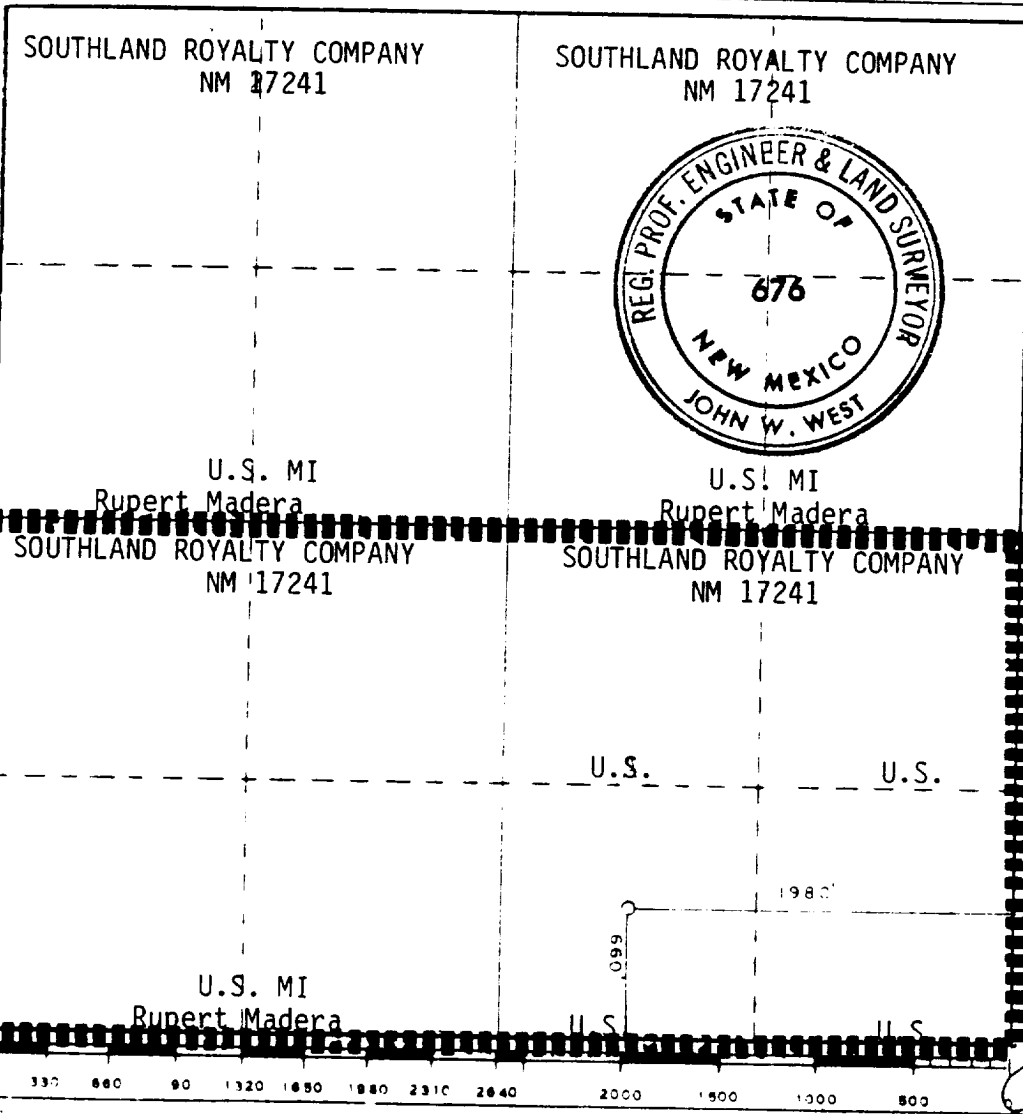
SOUTHLAND ROYALTY CO.			LEASE VACA RIDGE 20 FED.			Well No. 1		
Section Letter 0	Section 20	Township 24 SOUTH	Range 34 EAST	County LEA				
Actual Well Location of Well:								
1980 feet from the EAST			line and 660			feet from the SOUTH		
Well Elev. 3519.0	Producing Formation Morrow		Pool Pitchfork Ranch			Dedicated Acreage: 320		

- Outline the acreage dedicated to the subject well by colored pencil or hachure marks on the plat below.
- If more than one lease is dedicated to the well, outline each and identify the ownership thereof (both as to working interest and royalty).
- If more than one lease of different ownership is dedicated to the well, have the interests of all owners been consolidated by communitization, unitization, force-pooling, etc?

Yes No If answer is "yes," type of consolidation _____

If answer is "no," list the owners and tract descriptions which have actually been consolidated. (Use reverse side of this form if necessary.) _____

No allowable will be assigned to the well until all interests have been consolidated (by communitization, unitization, forced-pooling, or otherwise) or until a non-standard unit, eliminating such interests, has been approved by the Commission.



CERTIFICATION

I hereby certify that the information contained herein is true and complete to the best of my knowledge and belief.

K. W. Harbin
Name
K. W. Harbin
Position
District Production Manager
Company
Southland Royalty Company
Date
11-29-83

I hereby certify that the well location shown on this plat was plotted from field notes of actual surveys made by me or under my supervision, and that the same is true and correct to the best of my knowledge and belief.

Date Surveyed
NOVEMBER 4, 1983
Registered Professional Engineer and Land Surveyor
John W. West
Certificate No. JOHN W. WEST, 676
RONALD J. EDSON, 3239

RE-ISSUED COMPLETION

COUNTY LEA FIELD Pitchfork Ranch STATE NM
 OPR SOUTHLAND ROYALTY API 30-025-28534
 NO 1 LEASE Vaca Ridge "20" Federal MAP
 Sec 20, T24S, T34E CO-ORD
 660 FSL, 1980 FEL of Sec 6-3-51 NM
 29 mj SE/Halfway SPD 12-30-83 CMP 6-3-85

CSG	WELL CLASS: INIT D FIN DG LSE. CODE			
	FORMATION	DATUM	FORMATION	DATUM
13 3/8-600-500 sx				
9 5/8-5173-2250 sx				
7 1/2-12,990-1550 sx				
4 1/2-nr-12,590-15,136-270 sx				
2 7/8-12,562				
	TD 15,136 (MRRW)		PBD 15,055	

IP (Morrow) Perfs 14,386-14,662 CAOF 915 MCFGPD. GOR Dry;
 gty (Gas) .575; SIWHP 7250; SIBHP 9336

P.L.C.: None

CONTR Parker Drlg #65 OPRS GR 3519 GR SUBS 25

F.R. 12-19-83
 PD 15,300 RT (Morrow)
 1-17-84 Drlg 3180
 1-24-84 Drlg 5260
 1-31-84 Drlg 9933
 2-28-84 Drlg Tight
 3-6-84 Drlg 14,518
 3-13-84 Drlg Tight
 3-20-84 Drlg Tight
 3-27-84 Drlg Tight
 4-3-84 TD 15,136; Tight
 No Cores or DST's
 6-24-85 TD 15,136; PBD 15,055; Complete
 Perf (Morrow) 14,386-14,662
 Acid (14,386-14,662) 750G gals (7 1/2%) + 1000
 SCF N2 per bbl
 (Morrow) FOUR POINT GAUGES:
 Flwd 176 MCFGPD, (NR) chk, 60 mins, TP 6980
 6-3-51 NM

LEA
SOUTHLAND ROYALTY

Pitchfork Ranch NM
1 Vaca Ridge "20" Federal Page 2
Sec 20, T24S, T34E

6-24-85

Continued

Flwd 289 MCFGPD, (NR) chk, 60 mins, TP 6620
Flwd 357 MCFGPD, (NR) chk, 60 mins, TP 6120
Flwd 535 MCFGPD, (NR) chk, 60 mins, TP 5120

*LOG TOPS: Delaware 5314, Wolfcamp 12,030,
Strawn 13,248, Atoka 13,678, Morrow 13,730,
Morrow A-2 14,380, Morrow A-1 14,626,
Morrow E 14,930

LOGS RUN: CNL, FDC, GRL, CAL, BILL.
BHT 208 deg @ 14,800

*Denotes changes & additions

6-3-51 NM

6-18-84

TEMPORARY COMPLETION ISSUED

6-29-85

RE-ISSUE OF SUSPENDED COMPLETION

8-3-85

RE-ISSUED COMPLETION

6-3-51 NM

IC 30-025-70924-83

COUNTY LEA FIELD Pitchfork Ranch STATE NM
 OPR SOUTHLAND ROYALTY API 30-025-28534
 NO 1 LEASE Vaca Ridge "20" Federal MAP
Sec 20, T24S, T34E CO-ORD
660 FSL, 1980 FEL of Sec 6-3-51 NM
29 mi SE/Halfway SPD *12-30-83 CMP *6-3-85

CSC	WELL CLASS: INIT D FIN *DGLSE. CODE			
	FORMATION	DATUM	FORMATION	DATUM
13 3/8-600-500 sx				
9 5/8-5173-2250 sx				
7 1/2-12,990-1550 sx				
4 1/2-1nr-12,590-15,136-270 sx				
*2 7/8-12,562				
	TD *15,136 (MRRW)		PBD *15,055	

*IP (Morrow) Perfs 14,386-14,662 CAOF 915 MCFGPD. GOR Dry;
 gty (Gas) .575; SIWHP 7250; SIBHP 9336

*P.L.C.: None

CONTR Parker Drlg #65 OPRSELEV 3519 GR SUBS 25

F.R. 12-19-83
 PD 15,300 RT (Morrow)
 1-17-84 Drlg 3180
 1-24-84 Drlg 5260
 1-31-84 Drlg 9933
 2-28-84 Drlg Tight
 3-6-84 Drlg 14,518
 3-13-84 Drlg Tight
 3-20-84 Drlg Tight
 3-27-84 Drlg Tight
 4-3-84 TD *15,136; Tight
 *No Cores
 *6-24-85 TD 15,136; PBD 15,055; Complete
 *Perf (Morrow) 14,386-14,662
 *Acid (14,386-14,662) 7500 gals (7 1/2%) +
 1000 SCF N2 per bbl
*(Morrow) FOUR POINT GAUGES:
 *Flwd 176 MCFGPD, (NR) chk, 60 mins, TP 6980
 6-3-51 NM

LEA
SOUTHLAND ROYALTY

Pitchfork Ranch
1 Vaca Ridge "20"
Federal
Sec 20, T24S, T34E

NM
Page #2

6-24-85

Continued

*Flwd 289 MCFGPD, (NR) chk, 60 mins, TP 6620
*Flwd 357 MCFGPD, (NR) chk, 60 mins, TP 6120
*Flwd 535 MCFGPD, (NR) chk, 60 mins, TP 5120
*Well drilled tight, will re-issue when
additional information becomes available
*LOGS RUN: CNL, FDC, GRL, CAL, DILL
*BHT 208 deg @ 14,800

*Denotes changes & additions

6-3-51 NM

6-18-84
6-29-85

TEMPORARY COMPLETION ISSUED
RE-ISSUE OF SUSPENDED COMPLETION

6-3-51 NM
IC 30-025-70924-83