

UNITED STATES
DEPARTMENT OF THE INTERIOR
GEOLOGICAL SURVEY(Other instructions on
reverse side)

30-025-30693

APPLICATION FOR PERMIT TO DRILL, DEEPEN, OR PLUG BACK

1a. TYPE OF WORK

DRILL ☒DEEPEN ☐PLUG BACK ☐

b. TYPE OF WELL

OIL
WELL ☒GAS
WELL ☐OTHER ☐SINGLE
ZONE ☒MULTIPLE
ZONE ☐

2. NAME OF OPERATOR

Arch Petroleum Inc.

3. ADDRESS OF OPERATOR

10 Desta Drive, Suite 420 E., Midland, Texas 79705

4. LOCATION OF WELL (Report location clearly and in accordance with any State requirements.)*

At surface

2310 FSL & 660 FWL, SECTION 35, T23S, R37E Unit L

At proposed prod. zone

Same

14. DISTANCE IN MILES AND DIRECTION FROM NEAREST TOWN OR POST OFFICE*

9 miles north of Jal

15. DISTANCE FROM PROPOSED*

LOCATION TO NEAREST
PROPERTY OR LEASE LINE, FT.
(Also to nearest drlg. unit line, if any)

330

16. NO. OF ACRES IN LEASE

120

17. NO. OF ACRES ASSIGNED
TO THIS WELL

40

18. DISTANCE FROM PROPOSED LOCATION*

TO NEAREST WELL, DRILLING, COMPLETED,
OR APPLIED FOR, ON THIS LEASE, FT.

330

19. PROPOSED DEPTH

7650

20. ROTARY OR CABLE TOOLS

Rotary (0-7650)

21. ELEVATIONS (Show whether DF, RT, GR, etc.)

3246.2 GR

22. APPROX. DATE WORK WILL START*

23.

PROPOSED CASING AND CEMENTING PROGRAM

SIZE OF HOLE	SIZE OF CASING	WEIGHT PER FOOT	SETTING DEPTH	QUANTITY OF CEMENT
12 1/4	8 5/8	24#	1175	750 sx Circulated
7 7/8	4 1/2	10.5#	7650	1430 sx

CEMENT PROGRAM:

PUMP & PLUG METHOD

SURFACE:

Guide Shoe, float collar, 5 centralizers, 750 sx Class 'C' w/2% CaCl + 1/4#/sx Flocele.

PRODUCTION:

Float Shoe, float collar, 15 centralizers, 800 sx Class 'H' Lite w/.5% Fluid Loss additive + 1/4#/sx Flocele, 630 sx Class 'H' 50/50 Pozmix w/.5% Fluid Loss additive + 1/4#/sx Flocele.

MUD PROGRAM:

0-1200' Fresh Spud Mud; 8.7-9.4#/gal; 33-35 Visc.; No WL.

1200-7000' Brine Water; 10#/gal; 26-28 Visc.; No WL. If WL control 10 cc or less; 32-35 Visc.

7000-7650' possible mud up due to loss; (9.2) to 10.0#/gal; 34-38 Visc; 30 cc WL.

BOP PROGRAM:

Shaeffer - Double Hydraulic w/accumulator, 10" - 900 Series - Type E w/11" opening, Tested Daily.

IN ABOVE SPACE DESCRIBE PROPOSED PROGRAM: If proposal is to deepen or plug back, give data on present productive zone and proposed new productive zone. If proposal is to drill or deepen directionally, give pertinent data on subsurface locations and measured and true vertical depths. Give blowout preventer program, if any.

24.

SIGNED



TITLE

Operations Manager

DATE

8/29/89

(This space for Federal or State office use)

PERMIT NO.

APPROVAL DATE

APPROVED BY

TITLE

DATE

9-21-89

CONDITIONS OF APPROVAL, IF ANY:

RECEIVED

OCT 5 1989

DDO
HONOLULU

Submit to Appropriate
District Office
State Lease - 4 copies
Fee Lease - 3 copies

State of New Mexico
Energy, Minerals and Natural Resources Department

Form C-102
Revised 1-1-89

OIL CONSERVATION DIVISION

P.O. Box 2088
Santa Fe, New Mexico 87504-2088

DISTRICT I
P.O. Box 1980, Hobbs, NM 88240

DISTRICT II
P.O. Drawer DD, Artesia, NM 88210

DISTRICT III
1000 Rio Brazos Rd., Aztec, NM 87410

WELL LOCATION AND ACREAGE DEDICATION PLAT

All Distances must be from the outer boundaries of the section

Operator Arch Petroleum Inc.			Lease Baylus Cade Federal		Well No. 4
Unit Letter L	Section 35	Township 23 South	Range 37 East	County Lea	
Actual Footage Location of Well: 2310 feet from the south line and 660 feet from the west line					
Ground level Elev. 3246.2'	Producing Formation Devonian		Pool Teague Devonian	Dedicated Acreage: 40 Acres	

1. Outline the acreage dedicated to the subject well by colored pencil or hatchure marks on the plat below.

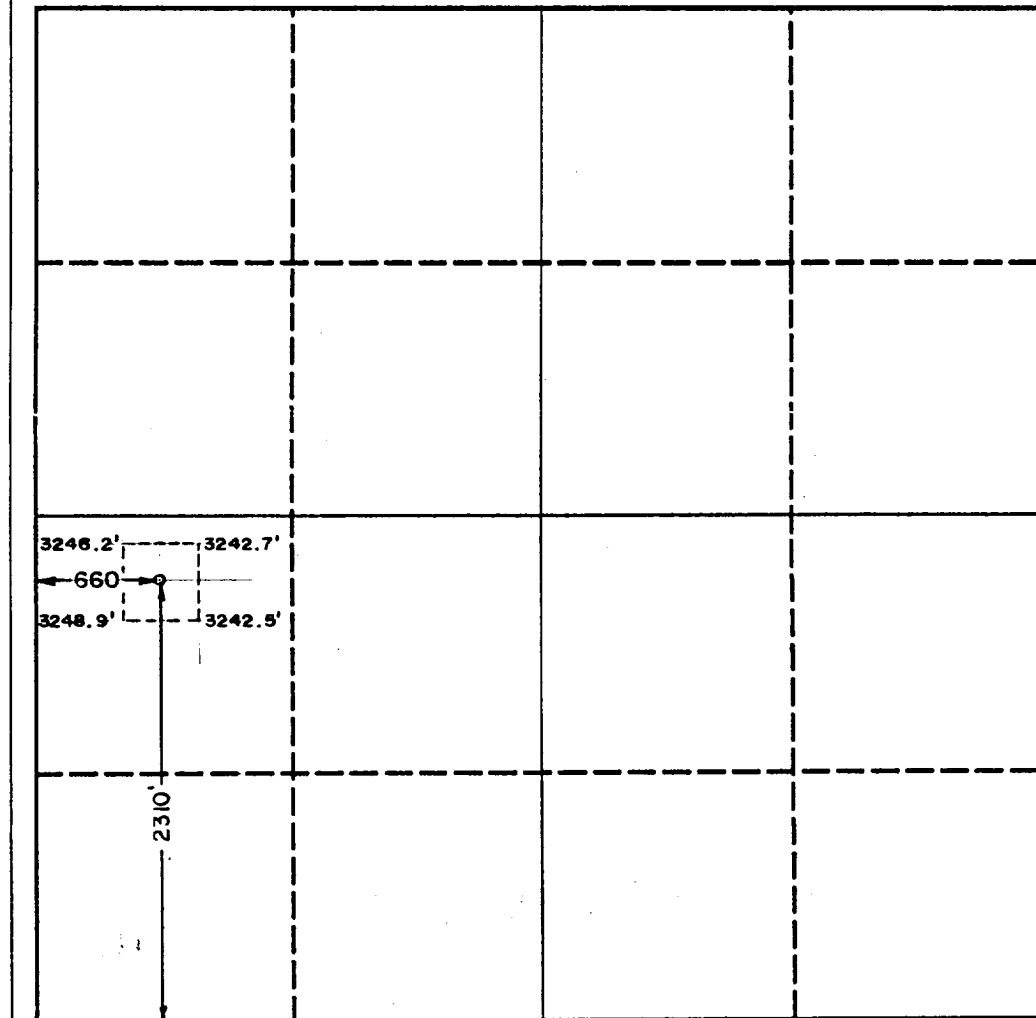
2. If more than one lease is dedicated to the well, outline each and identify the ownership thereof (both as to working interest and royalty).

3. If more than one lease of different ownership is dedicated to the well, have the interest of all owners been consolidated by communitization, unitization, force-pooling, etc.?

☐ Yes ☐ No If answer is "yes" type of consolidation _____

If answer is "no" list the owners and tract descriptions which have actually been consolidated. (Use reverse side of this form if necessary.) _____

No allowable will be assigned to the well until all interests have been consolidated (by communitization, unitization, forced-pooling, or otherwise) or until a non-standard unit, eliminating such interest, has been approved by the Division.



OPERATOR CERTIFICATION

I hereby certify that the information contained herein is true and complete to the best of my knowledge and belief.

Signature

David Miller

Printed Name

Operations Manager

Position

Arch Petroleum Inc.

Company

10-6-89

Date

SURVEYOR CERTIFICATION

I hereby certify that the well location shown on this plat was plotted from field notes of actual survey made under my supervision, and that the same are true and correct to the best of my knowledge and belief.

Date Surveyed

August 23, 1989

Signature of Registered Professional Surveyor

JOHN W. WEST

Certificate No. JOHN W. WEST,

676

RONALD J. EIDSON, 3230

RECEIVED

OCT 9 1989

OCR

MOBRS

RECEIVED

OCT 5 1989

PHOTOGRAPHY

3000 psi WORKING PRESSURE BOP

Arch Petroleum Inc.

EXHIBIT "C"

10 DESTA DRIVE SUITE 420 EAST MIDLAND, TEXAS 79705

BAYLUS CADE FEDERAL NO. 4
2310 FSL & 660 FWL
SECTION 35, T23S, R37E
LEA COUNTY, NEW MEXICO

