

Submit to Appropriate  
District Office  
State Lease - 6 copies  
Fee Lease - 5 copies

State of New Mexico  
Energy, Minerals and Natural Resources Department

Form C-101  
Revised 1-1-89

**OIL CONSERVATION DIVISION**

**DISTRICT I**  
P.O. Box 1980, Hobbs, NM 88240

**DISTRICT II**  
P.O. Drawer DD, Artesia, NM 88210

**DISTRICT III**  
1000 Rio Brazos Rd., Aztec, NM 87410

P.O. Box 2088  
Santa Fe, New Mexico 87504-2088

API NO. (assigned by OCD on New Wells)  
30-025-31201

5. Indicate Type of Lease  
STATE ☐ FEE ☒

6. State Oil & Gas Lease No.  
313721

**APPLICATION FOR PERMIT TO DRILL, DEEPEN, OR PLUG BACK**

**1a. Type of Work:**

DRILL ☐ RE-ENTER ☐ DEEPEN ☐ PLUG BACK ☒

**b. Type of Well:**

OIL WELL ☒ GAS WELL ☐ OTHER ☐ SINGLE ZONE ☒ MULTIPLE ZONE ☐

**7. Lease Name or Unit Agreement Name**

B. F. HARRISON -B-

**2. Name of Operator**

TEXACO EXPLORATION AND PRODUCTION INC.

**8. Well No.**

5

**3. Address of Operator**

P. O. Box 3109, Midland, Texas 79702

**9. Pool name or Wildcat**

\*UNDESIGNATED

**4. Well Location**

Unit Letter E : 1950 Feet From The NORTH Line and 560 Feet From The WEST Line

Section 9 Township 23-SOUTH Range 37-EAST NMPM LEA County

**10. Proposed Depth**

10307'

**11. Formation**

\*\*

**12. Rotary or C.T.**

R

**13. Elevations (Show whether DF, RT, GR, etc.)**

GR-3316', KB-3334'

**14. Kind & Status Plug. Bond**

BLANKET

**15. Drilling Contractor**

**16. Approx. Date Work will start**

08-30-91

**17. PROPOSED CASING AND CEMENT PROGRAM**

SIZE OF HOLE	SIZE OF CASING	WEIGHT PER FOOT	SETTING DEPTH	SACKS OF CEMENT	EST. TOP
22 1/2	18 5/8	87.5#	40'	REDI-MIX	SURFACE
17 1/2	13 3/8	54.5#	1180'	1100	SURFACE
12 1/4	9 5/8	40#	3685'	1450	SURFACE
8 3/4	5 1/2	17#	10307'	2550	SURFACE

THERE ARE NO OTHER OPERATORS IN THIS QUARTER/QUARTER SECTION.

CEMENTING PROGRAM: CONDUCTOR - REDI-MIX

SURFACE - 900 SACKS CLASS H w/ 2% GEL & 2% CaCl<sub>2</sub> (14.7ppg, 1.36f3/s, 6.5gw/s). F/B 200 SACKS CLASS H w/ 2% CaCl<sub>2</sub> (15.6ppg, 1.19f3/s, 5.2gw/s).

INTERMEDIATE - 1st STAGE: 900 SACKS 50/50 POZ CLASS H w/ 2% GEL & 5% SALT (14.25ppg, 1.28f3/s, 5.75gw/s).

F/B 250 SACKS CLASS H w/ 2% CaCl<sub>2</sub> (15.6ppg, 1.19f3/s, 5.2gw/s). 2nd STAGE: DV TOOL @ 1207'. 300 SACKS CLASS H w/ 2% CaCl<sub>2</sub> (15.6ppg, 1.19f3/s, 5.2gw/s).

PRODUCTION - 1st STAGE: 900 SACKS 35/65 POZ CLASS H w/ 6% GEL, 5% SALT & 1/4# FLOCELE (12.8ppg, 1.87f3/s, 9.9gw/s). F/B 250 SACKS CLASS H w/ 1/4# FLOCELE & 0.6% HALAD-9 (15.6ppg, 1.18f3/s, 5.2gw/s). 2nd STAGE: DV TOOL @ 7017'. 1400 SACKS 35/65 POZ CLASS H w/ 6% GEL, 5% SALT & 1/4# FLOCELE (12.8ppg, 1.87f3/s, 9.9gw/s).

\*UNDESIGNATED (WILDCAT ABOVE ELLENBURGER IN TEAGUE NORTH FIELD).

\*\*FORMATIONS: FUSSELMAN, DEVONIAN, ABO, DRINKARD, BLINEBRY, GRAYBURG.

IN ABOVE SPACE DESCRIBE PROPOSED PROGRAM: IF PROPOSAL IS TO DEEPEN OR PLUG BACK, GIVE DATA ON PRESENT PRODUCTIVE ZONE AND PROPOSED NEW PRODUCTIVE ZONE. GIVE BLOWOUT PREVENTER PROGRAM, IF ANY.

I hereby certify that the information above is true and complete to the best of my knowledge and belief.

SIGNATURE C.P. Basham /cwl TITLE DRILLING OPERATIONS MANAGER DATE 08-30-91

TYPE OR PRINT NAME C. P. BASHAM

TELEPHONE NO. 915-688-4620

(This space for State Use)

APPROVED BY \_\_\_\_\_ TITLE \_\_\_\_\_ DATE \_\_\_\_\_

CONDITIONS OF APPROVAL, IF ANY:

Submit to Appropriate  
District Office  
State Lease - 4 copies  
Fee Lease - 3 copies

State of New Mexico  
Energy, Minerals and Natural Resources Department

Form C-102  
Revised 1-1-89

OIL CONSERVATION DIVISION

P.O. Box 2088  
Santa Fe, New Mexico 87504-2088

DISTRICT I  
P.O. Box 1980, Hobbs, NM 88240

DISTRICT II  
P.O. Drawer DD, Artesia, NM 88210

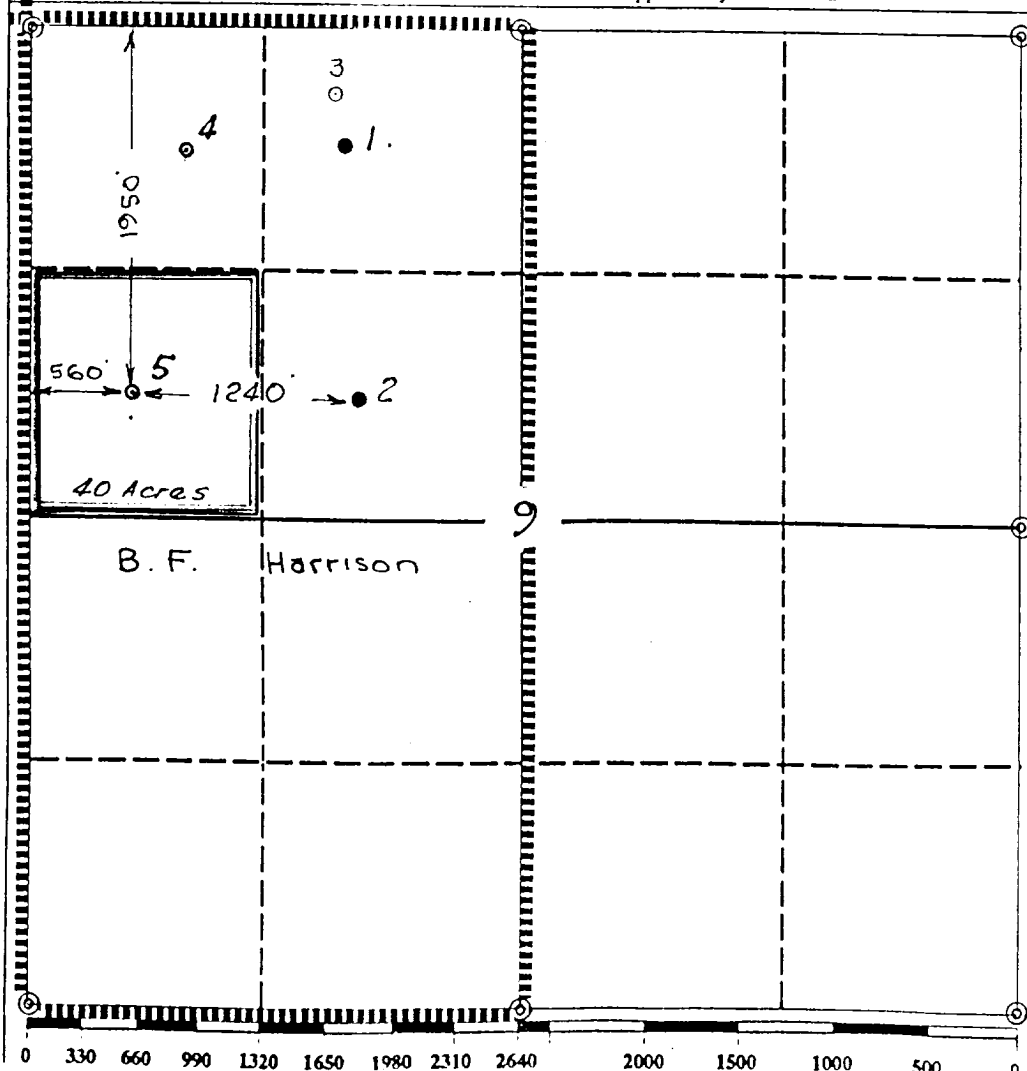
DISTRICT III  
1000 Rio Brazos Rd., Aztec, NM 87410

WELL LOCATION AND ACREAGE DEDICATION PLAT

All Distances must be from the outer boundaries of the section

Operator TEXACO PRODUCING INC.		Lease B. F. Harrison "B"		Well No. 5
Unit Letter E	Section 9	Township 23-South	Range 37-East	County Lea
Actual Footage Location of Well: 1950 feet from the North line and 560 feet from the West line				
Ground level Elev. 3316	Producing Formation Devonian * See C-101		Pool Wildcat	Dedicated Acreage: 40 Acres

- Outline the acreage dedicated to the subject well by colored pencil or hatchure marks on the plat below.
- If more than one lease is dedicated to the well, outline each and identify the ownership thereof (both as to working interest and royalty).
- If more than one lease of different ownership is dedicated to the well, have the interest of all owners been consolidated by communitization, unitization, force-pooling, etc?  
☐ Yes ☐ No If answer is "yes" type of consolidation \_\_\_\_\_  
If answer is "no" list the owners and tract descriptions which have actually been consolidated. (Use reverse side of this form if necessary).  
No allowable will be assigned to the well until all interests have been consolidated (by communitization, unitization, forced-pooling, or otherwise) or until a non-standard unit, eliminating such interest, has been approved by the Division.



OPERATOR CERTIFICATION

I hereby certify that the information contained herein is true and complete to the best of my knowledge and belief.

Signature  
Royce D. Mariott  
Printed Name  
Royce D. Mariott  
Position  
Division Surveyor  
Company  
Texaco Producing Inc.  
Date  
Aug. 30, 1991

SURVEYOR CERTIFICATION

I hereby certify that the well location shown on this plat was plotted from field notes of actual surveys made by me or under my supervision, and that the same is true and correct to the best of my knowledge and belief.

Date Surveyed  
March 7, 1991  
Signature & Seal of  
Professional Surveyor  
John S. Piper  
Certificate No. 7254  
John S. Piper