

NEW MEXICO OIL CONSERVATION COMMISSION  
 WELL LOCATION AND ACREAGE DEDICATION FORM

Form - 102  
 Super to C-128  
 Effective 1-1-65

All distances must be from the outer boundaries of the Section

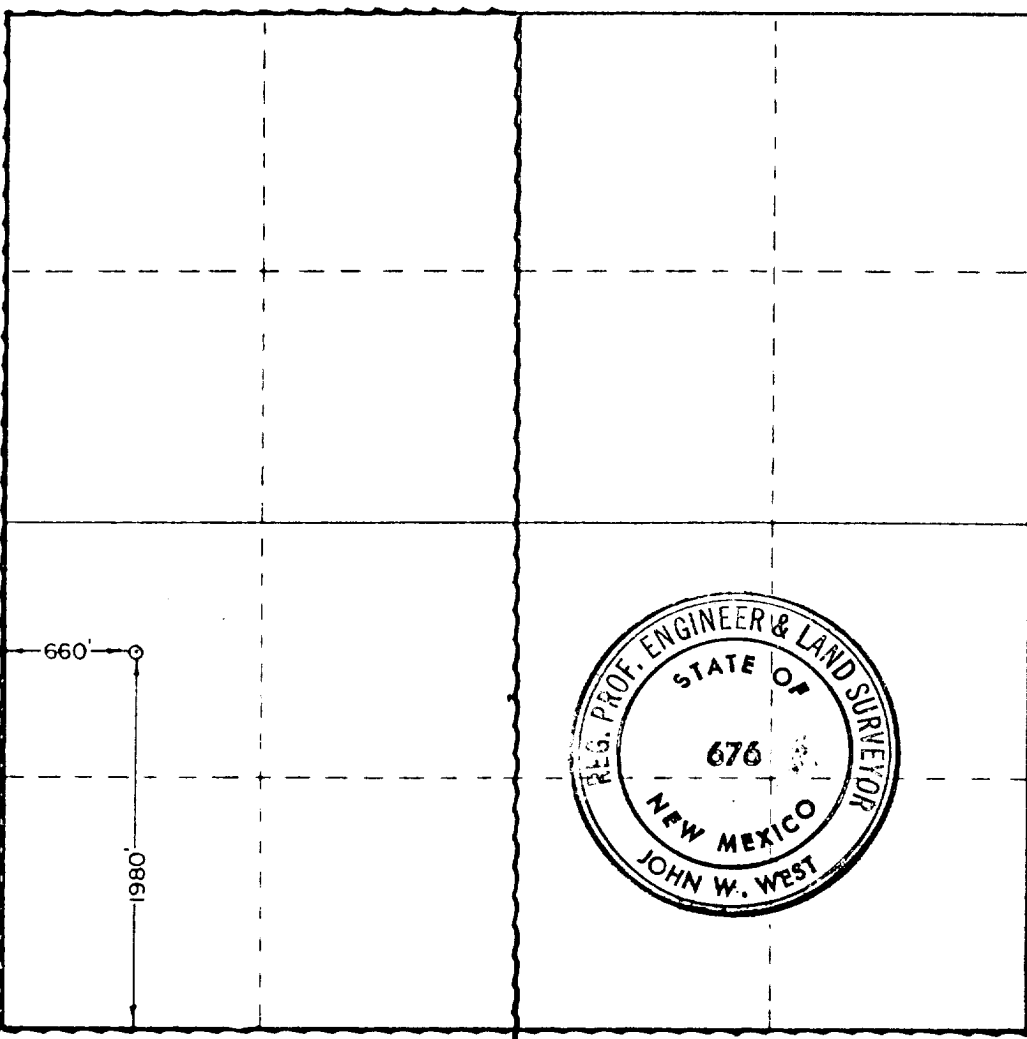
Operator <b>AMOCO PRODUCTION COMPANY</b>		Lease <b>ANDRIKOPOULOS FED.</b>		Well No. <b>1</b>
Unit Letter <b>L</b>	Section <b>24</b>	Township <b>25 SOUTH</b>	Range <b>33 EAST</b>	County <b>LEA</b>
Actual Well Location of Well:				
<b>1980</b>	feet from the <b>SOUTH</b>	line and <b>660</b>	feet from the <b>WEST</b>	line
Ground Level Elev. <b>3335.3</b>	Producing Formation <b>Morrow</b>	Pool <b>Wildcat Morrow</b>	Dedicated Acreage: <b>320</b> Acres	

- Outline the acreage dedicated to the subject well by colored pencil or hachure marks on the plat below.
- If more than one lease is dedicated to the well, outline each and identify the ownership thereof (both as to working interest and royalty).
- If more than one lease of different ownership is dedicated to the well, have the interests of all owners been consolidated by communitization, unitization, force-pooling, etc?

Yes  No If answer is "yes," type of consolidation \_\_\_\_\_

If answer is "no," list the owners and tract descriptions which have actually been consolidated. (Use reverse side of this form if necessary.) \_\_\_\_\_

No allowable will be assigned to the well until all interests have been consolidated (by communitization, unitization, forced-pooling, or otherwise) or until a non-standard unit, eliminating such interests, has been approved by the Commission.



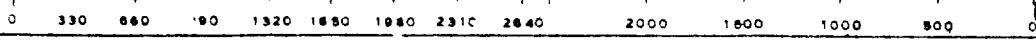
CERTIFICATION

I hereby certify that the information contained herein is true and complete to the best of my knowledge and belief.

Name: *Ray Cox*  
 Position: **Administrative Supervisor**  
 Company: **Amoco Production Company**  
 Date: **7-20-79**

I hereby certify that the well location shown on this plat was plotted from field notes of actual surveys made by me or under my supervision, and that the same is true and correct to the best of my knowledge and belief.

Date Surveyed: **JULY 3RD, 1979**  
 Registered Professional Engineer and/or Land Surveyor:  
*John W. West*  
 Certificate No. **John W. West 676**  
**Ronald J. Eidson 3239**





12-4-79 Continued  
RO 6000' WB + 20' DM w/tr Gas (Sampler rec  
1.55 CFG + 800 cc's mud), 1 hr 30 min ISIP  
9893#, FP 2598-2598#, 2 hr FSIP 9837#, HP  
9614-9502#

12-7-79 TD 15,800'; TIH W/DP  
12-20-79 TD 15,800'; WOCT  
2-8-80 TD 15,800'; PBD 15,754'; Tstg Tbg  
2-20-80 TD 15,800'; PBD 15,754'; Tstg Tbg  
2-27-80 TD 15,800'; PBD 15,754'; Prep Swb tst  
Perf (Morrow) 15,554-564' w/2 SPF

3-3-80 TD 15,800'; PBD 15,754'; SI  
Acid (15,5574-564') 2000 gals (7 1/2%)

3-7-80 TD 15,800'; PBD 15,754'; SI 5-3-26 NM

3-7-80 Continued

4-11-80 Swbd 15 BLW w/NS (15,554-564')  
TD 15,800'; PBD 15,400'; Flwg  
Set CIBP @ 15,400'  
Perf (Morrow) 14,986-995', 15,096-102',  
15,206-209' w/2 SPF  
Acid (14,986-15,209') 5000 gals (7 1/2%)  
Flwd @ 1083 MCFGPD + 1 BW in 24 hrs thru  
23/64" chk, TP 630# (14,986-15,209')

4-14-80 TD 15,800'; PBD 15,400'; WOSP  
5-12-80 TD 15,800'; PBD 15,400'; Complete  
Morrow Discovery; No Suggested Field Name  
Will Re-issue if Log Tops Become available

5-17-80 COMPLETION ISSUED

5-3-26 NM  
IC 30-025-70325-79