

DISTRICT I  
P.O. Box 1980, Hobbs, NM 88241-1980

DISTRICT II  
P.O. Box Drawer DD, Artesia, NM 88211-0719

DISTRICT III  
1000 Rio Brazos Rd., Aztec, NM 87410

DISTRICT IV  
P.O. Box 2088, Santa Fe, NM 87504-2088

State of New Mexico  
Energy, Minerals and Natural Resources Department

OIL CONSERVATION DIVISION

P.O. Box 2088  
Santa Fe, New Mexico 87504-2088

Form C-101  
Revised February 10, 1994

Instructions on back  
Submit to Appropriate District Office

State Lease - 6 Copies  
Fee Lease - 5 Copies

APPLICATION FOR PERMIT TO DRILL, RE-ENTER, DEEPEN, PLUGBACK, OR ADD A ZONE

AMENDED REPORT

<sup>1</sup> Operator Name and Address TEXACO EXPLORATION & PRODUCTION INC. P.O. Box 3109, Midland Texas 79702		<sup>2</sup> OGRID Number 022351
<sup>4</sup> Property Code 10926	<sup>5</sup> Property Name WEST DOLLARHIDE DRINKARD UNIT	<sup>3</sup> API Number 30-025-32767
		<sup>6</sup> Well No. 110

<sup>7</sup> Surface Location										
Ul or lot no.	Section	Township	Range	Lot.Idn	Feet From The	North/South Line	Feet From The	East/West Line	County	
J	32	24-S	38-E		2630	SOUTH	1945	EAST	LEA	

<sup>8</sup> Proposed Bottom Hole Location If Different From Surface										
Ul or lot no.	Section	Township	Range	Lot.Idn	Feet From The	North/South Line	Feet From The	East/West Line	County	
<sup>9</sup> Proposed Pool 1 DOLLARHIDE TUBB DRINKARD (18830)					<sup>10</sup> Proposed Pool 2					

<sup>11</sup> Work Type Code N	<sup>12</sup> WellType Code O	<sup>13</sup> Rotary or C.T. ROTARY	<sup>14</sup> Lease Type Code S	<sup>15</sup> Ground Level Elevation 3190'
<sup>16</sup> Multiple No	<sup>17</sup> Proposed Depth 7575'	<sup>18</sup> Formation TUBB, DRINKARD, ABO	<sup>19</sup> Contractor	<sup>20</sup> Spud Date 2/1/95

<sup>21</sup> Proposed Casing and Cement Program					
SIZE OF HOLE	SIZE OF CASING	WEIGHT PER FOOT	SETTING DEPTH	SACKS OF CEMENT	EST. TOP
12 1/4	8 5/8	24#	1200'	600 SACKS	SURFACE
7 7/8	5 1/2	15.5#, 17#	7575'	2000 SACKS	SURFACE

<sup>22</sup> Describe the proposed program. If this application is to DEEPEN or PLUG BACK give the data on the present productive zone and proposed new productive zone. Describe the blowout prevention program, if any. Use additional sheets if necessary.

CEMENTING PROGRAM:  
SURFACE CASING - 400 SACKS CLASS C w/4% GEL, 2% CACL2 (13.5 PPG, 1.74 CF/S, 9.1 GW/S). F/B 200 SACKS CLASS C w/ 2% CACL2 (14.8, 1.34 CF/S, 6.3 GW/S).  
PRODUCTION CASING - 1500 SACKS 35/65 POZ CLASS H w/ 6% GEL, 5% SALT, 1/4# FLOCELE (12.8 PPG, 1.94 CF/S, 10.4 GW/S). F/B 500 SACKS CLASS H (15.6 PPG, 1.18 CF/S, 5.2 GW/S).

UNORTHODOX LOCATION: EXCEPTION HAS BEEN APPLIED FOR. (COPY ATTACHED)

OXY OPERATES A WELL IN THIS QUARTER QUARTER SECTION AND HAS BEEN FURNISHED A COPY OF THIS APPLICATION.

NSU-3441

<sup>23</sup> I hereby certify that the rules and regulations of the Oil Conservation Division have been complied with and that the information given above is true and complete to the best of my knowledge and belief.		<b>OIL CONSERVATION DIVISION</b>	
Signature <i>C. Wade Howard</i>	Approved By: <i>DEBRA SUTTON</i> DISTRICT SUPERVISOR		
Printed Name C. Wade Howard	Title:		
Title Eng. Assistant	Approval Date: <b>DEC 12 1994</b>	Expiration Date:	
Date 12/9/94	Telephone 688-4606	Conditions of Approval: Attached <input type="checkbox"/>	

Permit Expires 6 Months From Approval  
Date Unless Drilling Underway.

8

**RECEIVED**

DEC 09 1994

O O D HOBBS  
OFFICE

Submit to Appropriate  
 District Office  
 State Lease - 4 copies  
 Fee Lease - 3 copies

State of New Mexico  
 Energy, Minerals and Natural Resources Department

Form C-102  
 Revised 1-1-81

OIL CONSERVATION DIVISION  
 P.O. Box 2088  
 Santa Fe, New Mexico 87504-2088

DISTRICT I  
 P.O. Box 1980, Hobbs, NM 88240

DISTRICT II  
 P.O. Drawer DD, Artesia, NM 88210

DISTRICT III  
 1000 Rio Brazos Rd., Aztec, NM 87410

(022351)

Operator <b>TEXACO EXPLORATION &amp; PRODUCTION INC.</b>		Lease <b>WEST DOLLARHIDE DRINKARD UNIT</b>		Well No. <b>110</b>
Unit Letter <b>J</b>	Section <b>32</b>	Township <b>24-SOUTH</b>	Range <b>38-EAST</b>	County <b>LEA</b>
Actual Footage Location of Well: <b>2630.0</b> feet from the <b>SOUTH</b> line and <b>1945.0</b> feet from the <b>EAST</b> line				
Ground Level Elev. <b>3190'</b>	Producing Formation <b>(ABO) TUBB DRINKARD (DRINKARD)</b>	Pool <b>(18830) DOLLARHIDE TUBB DRINKARD</b>	Dedicated Acreage: <b>40</b> Acres	

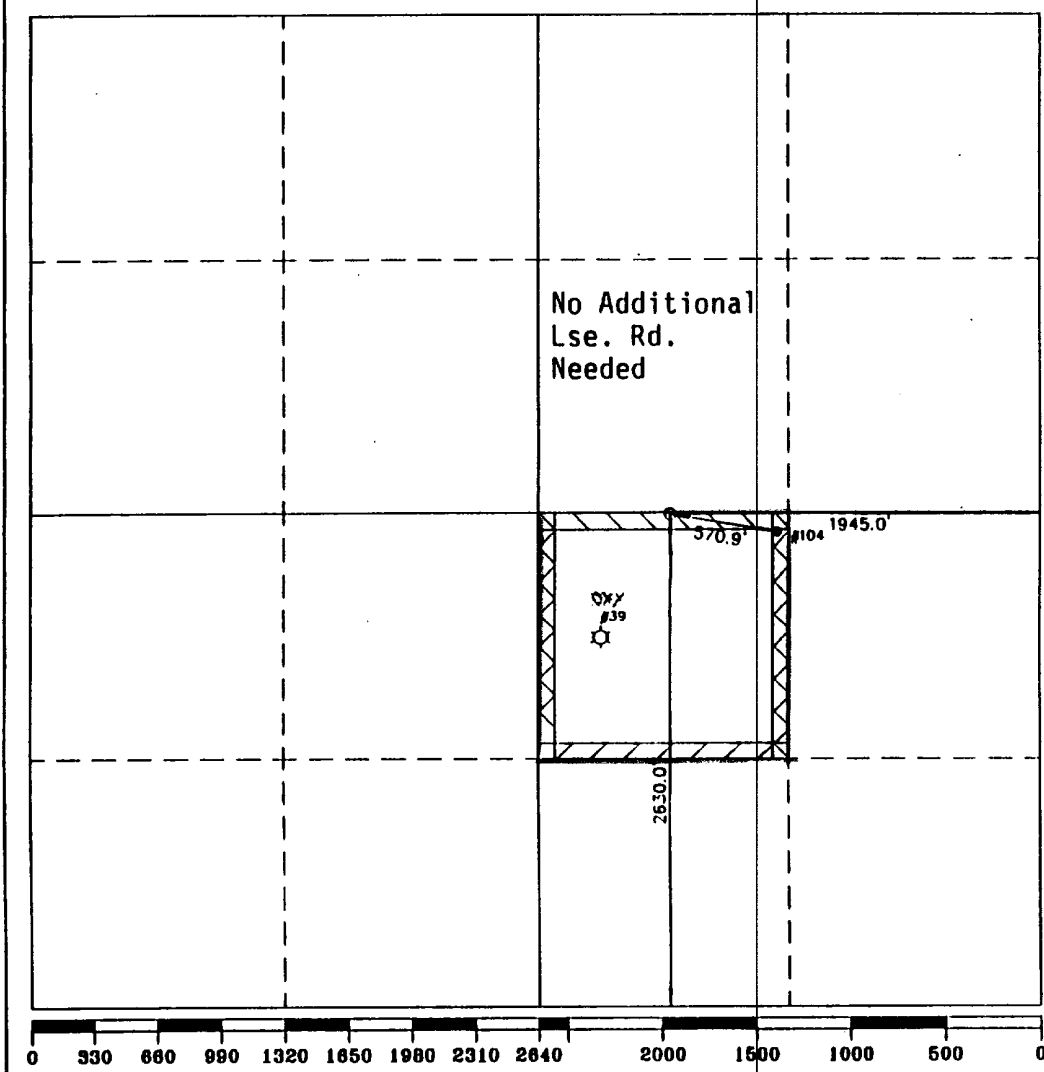
1. Outline the acreage dedicated to the subject well by colored pencil or hachure marks on the plat below.

2. If more than one lease is dedicated to the well, outline each and identify the ownership thereof (both as to working interest and royalty).

3. If more than one lease of different ownership is dedicated to the well, have the interest of all owners been consolidated by communitization, unitization, force-pooling, etc.?  
 Yes     No    If answer is "yes" type of consolidation \_\_\_\_\_

If answer is "no" list of owners and tract descriptions which have actually been consolidated. (Use reverse side of this form necessary.) \_\_\_\_\_

No allowable will be assigned to the well unit all interests have been consolidated (by communitization, unitization, forced-pooling, otherwise) or until a non-standard unit, eliminating such interest, has been approved by the Division.



**OPERATOR CERTIFICATION**

I hereby certify the the information contained herein is true and complete to the best of my knowledge and belief.

Signature  
*C. Wade Howard*

Printed Name  
**C. WADE HOWARD**

Position  
**ENGR'S. ASSISTANT**

Company  
**TEXACO EXPL. + PROD. INC.**

Date  
**11-21-94**

**SURVEYOR CERTIFICATION**

I hereby certify that the well location shown on this plat was plotted from field notes of actual surveys made by me or under my supervision, and that the same is true and correct to the best of my knowledge and belief.

Date Surveyed  
**11-15-94**

Signature & Seal of Professional Surveyor  
*[Signature]*

Certificate No. **16 MEX 4882**

REGISTERED SURVEYOR STATE OF NEW MEXICO

RECEIVED

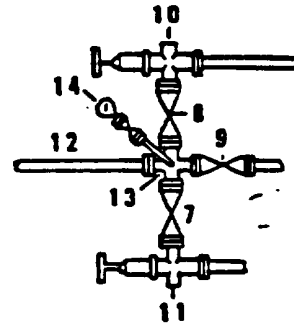
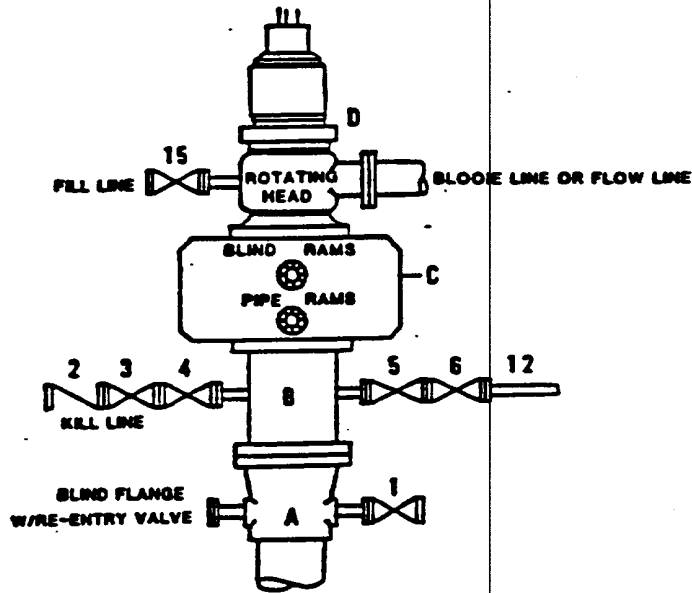
APR 18 1994

W. G. HOBBES  
OFFICE

# DRILLING CONTROL CONDITION II-B 3000 WP

FOR AIR DRILLING OR  
WHERE NITROGEN OR AIR BLOWS ARE EXPECTED

H<sub>2</sub>S TRIM REQUIRED  
YES   X   NO       



### DRILLING CONTROL

#### MATERIAL LIST - CONDITION II - B

- |                |                                                                                                                                                                                                     |
|----------------|-----------------------------------------------------------------------------------------------------------------------------------------------------------------------------------------------------|
| A              | Texaco Wellhead                                                                                                                                                                                     |
| B              | 3000# W.P. drilling spool with a 2" minimum flanged outlet for kill line and 3" minimum flanged outlet for choke line.                                                                              |
| C              | 3000# W.P. Dual ram type preventer, hydraulic operated with 1" steel, 3000# W.P. control lines (where sub-structure height is adequate, 2 - 3000# W.P. single ram type preventers may be utilized). |
| D              | Rotating Head with fill up outlet and extended Bloop Line.                                                                                                                                          |
| 1,3,4,<br>7,8, | 2" minimum 3000# W.P. flanged full opening steel gate valve, or Halliburton Lo Torc Plug valve.                                                                                                     |
| 2              | 2" minimum 3000# W.P. back pressure valve.                                                                                                                                                          |
| 5,6,9          | 3" minimum 3000# W.P. flanged full opening steel gate valve, or Halliburton Lo Torc Plug valve.                                                                                                     |
| 12             | 3" minimum schedule 80, Grade "B", seamless line pipe.                                                                                                                                              |
| 13             | 2" minimum x 3" minimum 3000# W.P. flanged cross.                                                                                                                                                   |
| 10,11          | 2" minimum 3000# W.P. adjustable choke bodies.                                                                                                                                                      |
| 14             | Cameron Mud Gauge or equivalent ( location optional in choke line).                                                                                                                                 |
| 15             | 2" minimum 3000# W.P. flanged or threaded full opening steel gate valve, or Halliburton Lo Torc Plug valve.                                                                                         |



**TEXACO, INC.**  
MIDLAND DIVISION  
MIDLAND, TEXAS



SCALE	DATE	EST. NO.	DRO. NO.
DRAWN BY:			
CHECKED BY:			
APPROVED BY:			

EXHIBIT C

**RECEIVED**

DEC 09 1994

COD HOBBS  
OFFICE



November 30, 1994

GOV - STATE AND LOCAL GOVERNMENTS

Unorthodox Locations

West Dollarhide Drinkard Unit  
Well Nos. 109, 110, 111, 112, 148,  
and 149  
Lea County, New Mexico

State of New Mexico  
Energy and Minerals Department  
Oil Conservation Division  
P. O. Box 2088  
Santa Fe, New Mexico 87501-2088

Attention: Mr. Michael E. Stogner

Gentlemen:

An exception, by administrative approval, to Rule 104 F.I. is requested for Texaco Exploration and Production Inc.'s West Dollarhide Drinkard Unit Well Nos. 109, 110, 111, 112, 148, and 149. The wells are located as follows:

Well No. 109:	1500' FSL & 525' FEL,	Sec.32, T-24-S, R-38-E
Well No. 110:	2630' FSL & 1945' FEL,	Sec.32, T-24-S, R-38-E
Well No. 111:	1360' FSL & 2055' FWL,	Sec.32, T-24-S, R-38-E
Well No. 112:	1475' FSL & 790' FWL,	Sec.32, T-24-S, R-38-E
Well No. 148:	2530' FSL & 1150' FEL,	Sec.31, T-24-S, R-38-E
Well No. 149:	165' FSL & 165' FWL,	Sec.32, T-24-S, R-38-E

The wells must be drilled in these locations to ensure proper development on 10-acre spacing. Wells drilled previously on 10-acre spacing have proven to be viable wells. These wells will be producing wells completed in the Drinkard/Abo formation.

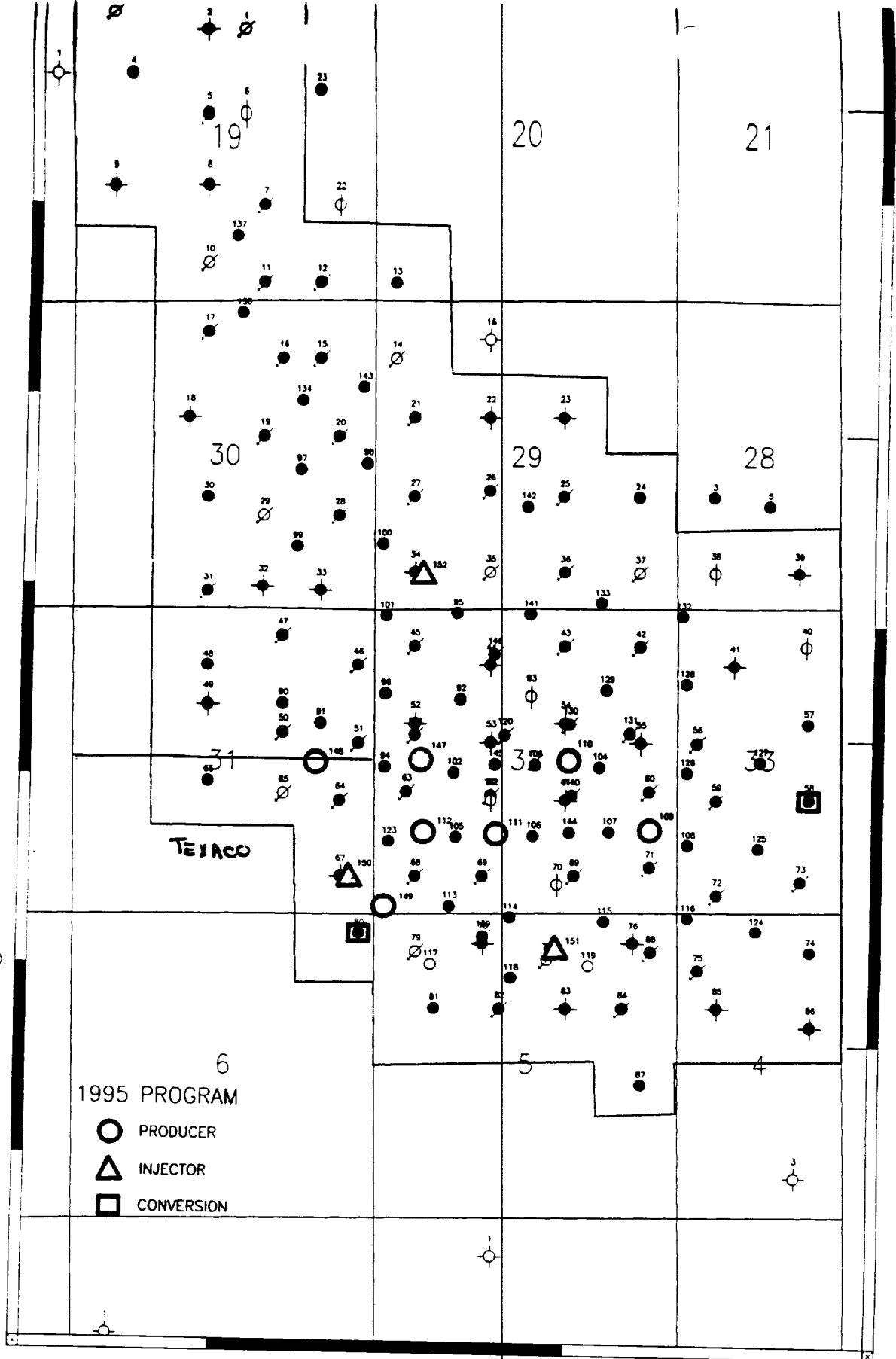
It should be noted that there are no affected offset operators to Well Nos. 109, 110, 111, 112, or 149. The affected offset operator to Well No. 148 is Texaco Exploration and Production Inc. and we grant ourselves a waiver to this request.

Attached are Forms C-102 for each well and a lease plat showing the existing wells, and locations of the subject wells.

Yours very truly,

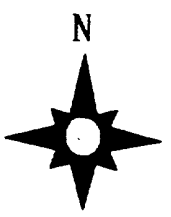
J. A. Head  
Asset Team Manager

CWH:cwh  
cc: NMOC, P. O. Box 1980, Hobbs, NM 88240



32.200

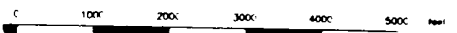
3560000



6  
1995 PROGRAM  
○ PRODUCER  
△ INJECTOR  
□ CONVERSION

-103.100

Scale 1:29713.32



LEGEND	
●	Oil Producer
⊛	Water Injector
⊕	Shut-in Producer

TEXACO E & P, INC
WEST DOLLARHIDE DRINKARD UNIT



RECEIVED

ELF  
12/21/00  
ABOVE DATE DOES NOT  
INDICATE WHEN  
CONFIDENTIAL LOGS  
WILL BE RELEASED

CONFIDENTIAL