

**District I**  
1625 N. French Dr., Hobbs, NM 88240  
**District II**  
1301 W. Grand Avenue, Artesia, NM 88210  
**District III**  
1000 Rio Brazos Road, Aztec, NM 87410  
**District IV**  
1220 S. St. Francis Dr., Santa Fe, NM 87505

State of New Mexico  
Energy Minerals and Natural Resources

Form C-101  
May 27, 2004

Oil Conservation Division  
1220 South St. Francis Dr.  
Santa Fe, NM 87505

RECEIVED

JUN 23 2005

Submit to appropriate District Office

AMENDED REPORT

OOD-ARTESIA

**APPLICATION FOR PERMIT TO DRILL, RE-ENTER, DEEPEN, PLUGBACK, OR ADD A ZONE**

<sup>1</sup> Operator Name and Address Bass Enterprises Production Co. P. O. Box 2760 Midland, TX 79702		<sup>2</sup> OGRID Number 001801
<sup>3</sup> Property Code 001796	<sup>5</sup> Property Name POKER LAKE UNIT	<sup>4</sup> API Number 30-015-39317
<sup>9</sup> Proposed Pool 1 - DELAWARE		<sup>10</sup> Proposed Pool 2

Unders. Corral Canyon

<sup>7</sup> Surface Location

UL or lot no.	Section	Township	Range	Lot Idn	Feet from the	North/South line	Feet from the	East/Westline	County
L	32	24S	30E		2290	FSL	100	FWL	EDDY

<sup>8</sup> Proposed Bottom Hole Location If Different From Surface

UL or lot no.	Section	Township	Range	Lot Idn	Feet from the	North/South line	Feet from the	East/Westline	County

Additional Well Information

<sup>11</sup> Work Type Code N	<sup>12</sup> Well Type Code O	<sup>13</sup> Cable/Rotary R	<sup>14</sup> Lease Type Code S	<sup>15</sup> Ground Level Elevation 3195' GL
<sup>16</sup> Multiple NO	<sup>17</sup> Proposed Depth 7700'	<sup>18</sup> Formation DELAWARE	<sup>19</sup> Contractor GREY WOLF	<sup>20</sup> Spud Date 08/15/2005
Depth to Groundwater 150'		Distance from nearest fresh water well 2-1/2 MILES		Distance from nearest surface water 6 MILES
Pit: Liner: Synthetic <input checked="" type="checkbox"/> 12 milsthick Clay <input type="checkbox"/>		Pit Volume: 11,500 bbls		Drilling Method: Fresh Water <input checked="" type="checkbox"/> Brine <input checked="" type="checkbox"/> Diesel/Oil-based <input checked="" type="checkbox"/> Gas/Air <input type="checkbox"/>
Closed-Loop System <input type="checkbox"/>				

<sup>21</sup> Proposed Casing and Cement Program

Hole Size	Casing Size	Casing weight/foot	Setting Depth	Sacks of Cement	Estimated TOC
14-3/4"	11-3/4"	42#	240'	200	SURFACE *
11"	8-5/8"	32#	3540'	1000	1000' **
7-7/8"	5-1/2"	15.5 & 17#	7700'	900	3100'

<sup>22</sup> Describe the proposed program. If this application is to DEEPEN or PLUG BACK, give the data on the present productive zone and proposed new productive zone. Describe the blowout prevention program, if any. Use additional sheets if necessary.

SURFACE IS OWNED BY THE STATE OF NEW MEXICO. ATTACHED IS A DRILLING PROGNOSIS AND A BOP DIAGRAM. THIS IS AN UNORTHODOX LOCATION.

\*Bass proposes to drill 10' into the salt section to insure all zones above the salt are penetrated. The casing will be set 10'-20' above the total depth and cemented to surface.

\*\*This intermediate casing is a contingency string to be installed only if we encounter "free flowing sand" as was found in our Poker Lake Unit #217 located in section 19, T24S,R30E.

In Poker Lake Unit #217 this sand occurred at several depths (+ 1500', + 1800', + 1950', + 2300') and we were only able to control it by "Mudding Up" with a high vis drilling fluid which with the resultant mud weight exceeded the low frac gradient in the Delaware Lower Brushy Canyon Sands. Therefore, the 11" casing is proposed in order to put this problem behind pipe and thereby allow for the drilling of the Delaware Sands with a fresh water low weight drilling fluid. If the flowing sand problem is not encountered the intermediate casing will not be run. Hole size will be reduced to 7-7/8" at 3550' and the production hole drilled with a brine water/diesel emulsion mud. This drilling fluid has been used successfully on 37 wells drilled by Bass in the (Nash Draw) Delaware Field.

<sup>23</sup> I hereby certify that the information given above is true and complete to the best of my knowledge and belief. I further certify that the drilling pit will be constructed according to NMOCD guidelines , a general permit , or an (attached) alternative OCD-approved plan .

OIL CONSERVATION DIVISION

Approved by:

TIM W. GUM

DISTRICT II SUPERVISOR

Printed name: Cindi Goodman

Title:

Title: Production Clerk

Approval Date: SEP 02 2005 Expiration Date: SEP 02 2006

E-mail Address: cdgoodman@basspet.com

Date: 06/17/2005

Phone: (432)683-2277

Conditions of Approval Attached

NSL-5271

DISTRICT I  
1625 N. French Dr., Hobbs, NM 88240

DISTRICT II  
811 South First, Artesia, NM 88210

DISTRICT III  
1000 Rio Brazos Rd., Aztec, NM 87410

DISTRICT IV  
2040 South Pacheco, Santa Fe, NM 87505

State of New Mexico  
Energy, Minerals and Natural Resources Department

Form C-102  
Revised March 17, 1999

Submit to Appropriate District Office  
State Lease - 4 Copies  
Fee Lease - 3 Copies

OIL CONSERVATION DIVISION

2040 South Pacheco  
Santa Fe, New Mexico 87504-2088

AMENDED REPORT

WELL LOCATION AND ACREAGE DEDICATION PLAT

API Number	Pool Code	Pool Name
	13360	DELAWARE
Property Code	Property Name	Well Number
001796	Oude's Canal Canyon POKER LAKE UNIT	244
OGRID No.	Operator Name	Elevation
001801	BASS ENTERPRISES PRODUCTION COMPANY	3195'

Surface Location

UL or lot No.	Section	Township	Range	Lot Idn	Feet from the	North/South line	Feet from the	East/West line	County
L	32	24 S	30 E		2290	SOUTH	100	WEST	EDDY

Bottom Hole Location If Different From Surface

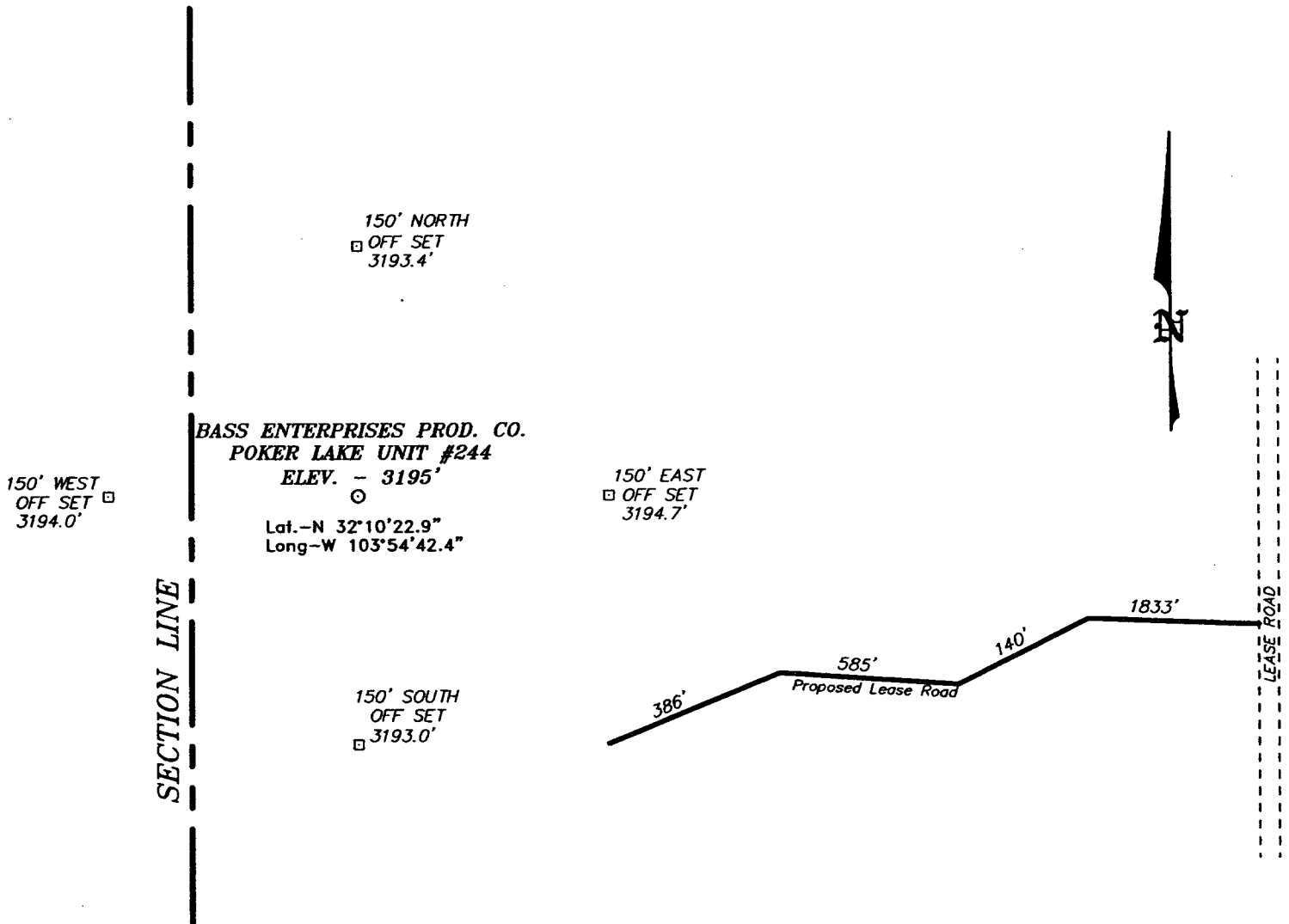
UL or lot No.	Section	Township	Range	Lot Idn	Feet from the	North/South line	Feet from the	East/West line	County

Dedicated Acres	Joint or Infill	Consolidation Code	Order No.
40	N		

NO ALLOWABLE WILL BE ASSIGNED TO THIS COMPLETION UNTIL ALL INTERESTS HAVE BEEN CONSOLIDATED OR A NON-STANDARD UNIT HAS BEEN APPROVED BY THE DIVISION

	<p><b>OPERATOR CERTIFICATION</b></p> <p>I hereby certify the the information contained herein is true and complete to the best of my knowledge and belief.</p> <p><i>W.R. Dannels</i> Signature</p> <p>W.R. DANNELS Printed Name</p> <p>DIVISION DRILLING SUPT. Title</p> <p>6-21-05 Date</p>	
	<p><b>SURVEYOR CERTIFICATION</b></p> <p>I hereby certify that the well location shown on this plat was plotted from field notes of actual surveys made by me or under my supervision, and that the same is true and correct to the best of my belief.</p> <p>JUNE 2, 2005 Date Surveyed</p> <p>GARY L. JONES Signature &amp; Seal of Professional Surveyor</p> <p>W.C. No. 5391</p> <p>Certificate No. Gary L. Jones 7977</p> <p>BASIN SURVEYS</p>	
	<p>162.60 acres</p>	
	<p>162.55 acres</p>	

SECTION 32, TOWNSHIP 24 SOUTH, RANGE 30 EAST, N.M.P.M.,  
 EDDY COUNTY, NEW MEXICO.



BASS ENTERPRISES PROD. CO.  
 POKER LAKE UNIT #244  
 ELEV. - 3195'  
 Lat.-N 32°10'22.9"  
 Long-W 103°54'42.4"

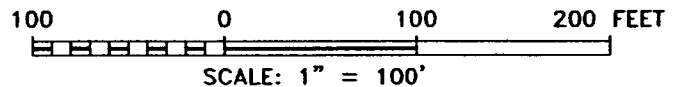
150' WEST  
 OFF SET □  
 3194.0'

150' EAST  
 OFF SET □  
 3194.7'

150' SOUTH  
 OFF SET □  
 3193.0'

SECTION LINE

LEASE ROAD



DIRECTIONS TO LOCATION:

FROM THE JUNCTION OF STATE HWY 128 AND  
 RAWHIDE ROAD, GO SOUTH FOR 10.2 MILES TO OLD  
 WINDMILL; THENCE WEST FOR 1.2 MILE; THENCE  
 SOUTHEAST FOR 1.8 MILE PAST A CATTLE GUARD;  
 THENCE SOUTH FOR 0.6 MILE TO PROPOSED LEASE  
 ROAD.

**BASS ENTERPRISES PRODUCTION CO.**

REF: POKER LAKE UNIT No. 244 / Well Pad Topo

THE POKER LAKE UNIT No. 244 LOCATED 2290' FROM  
 THE SOUTH LINE AND 100' FROM THE WEST LINE OF  
 SECTION 32, TOWNSHIP 24 SOUTH, RANGE 30 EAST,  
 N.M.P.M., EDDY COUNTY, NEW MEXICO.

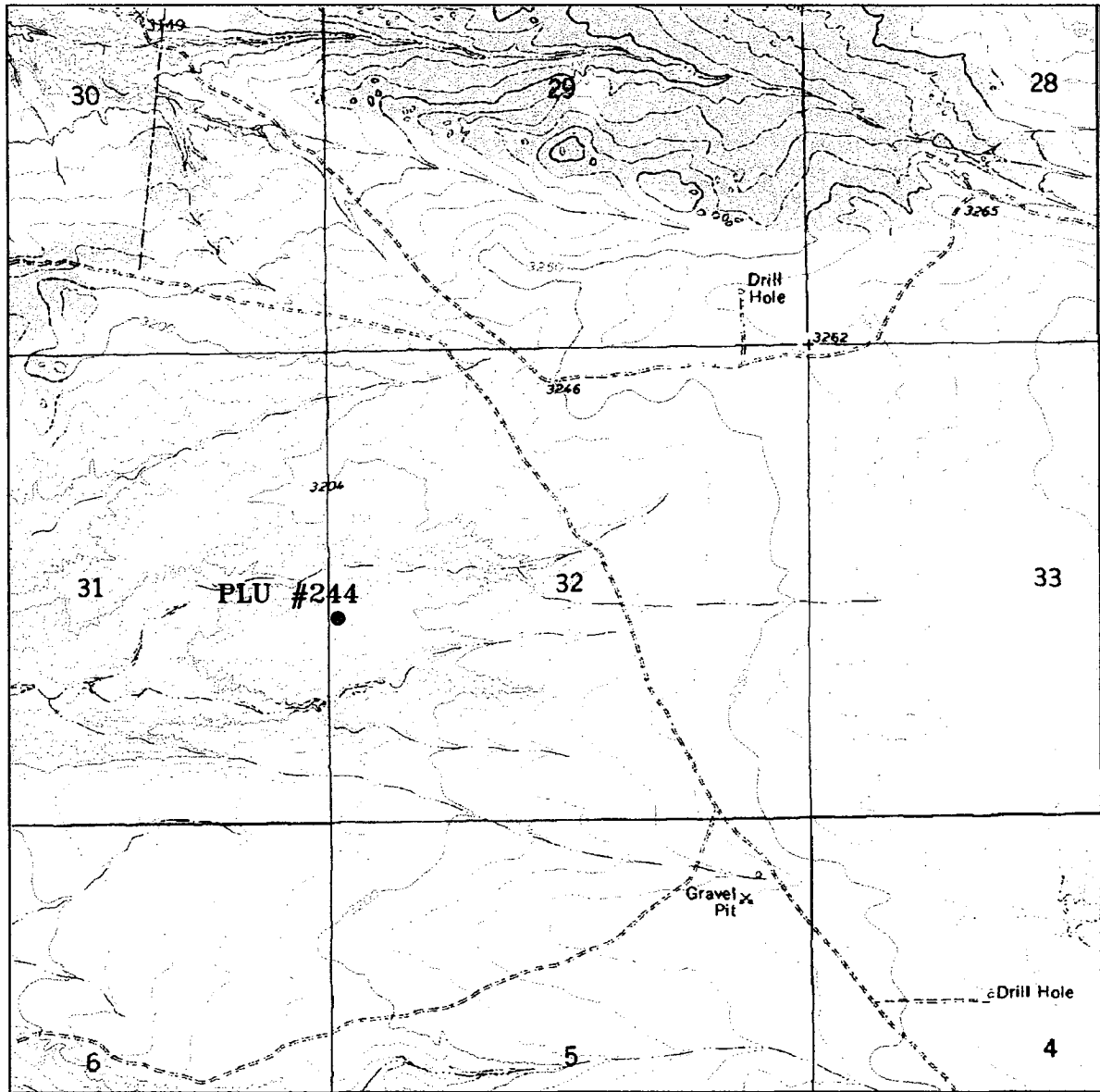
**BASIN SURVEYS** P.O. BOX 1786-HOBBS, NEW MEXICO

W.O. Number: 5391

Drawn By: K. GOAD

Date: 06-03-2005 Disk: KIG CD#7 - 5391A DWG

Survey Date: 06-02-2005 Sheet 1 of 1 Sheets



**POKER LAKE UNIT #244**

Located at 2290' FSL and 100' FWL  
 Section 32, Township 24 South, Range 30 East,  
 N.M.P.M., Eddy County, New Mexico.



focused on excellence  
 in the oilfield

P.O. Box 1786  
 1120 N. West County Rd.  
 Hobbs, New Mexico 88241  
 (505) 393-7316 - Office  
 (505) 392-3074 - Fax  
 basinsurveys.com

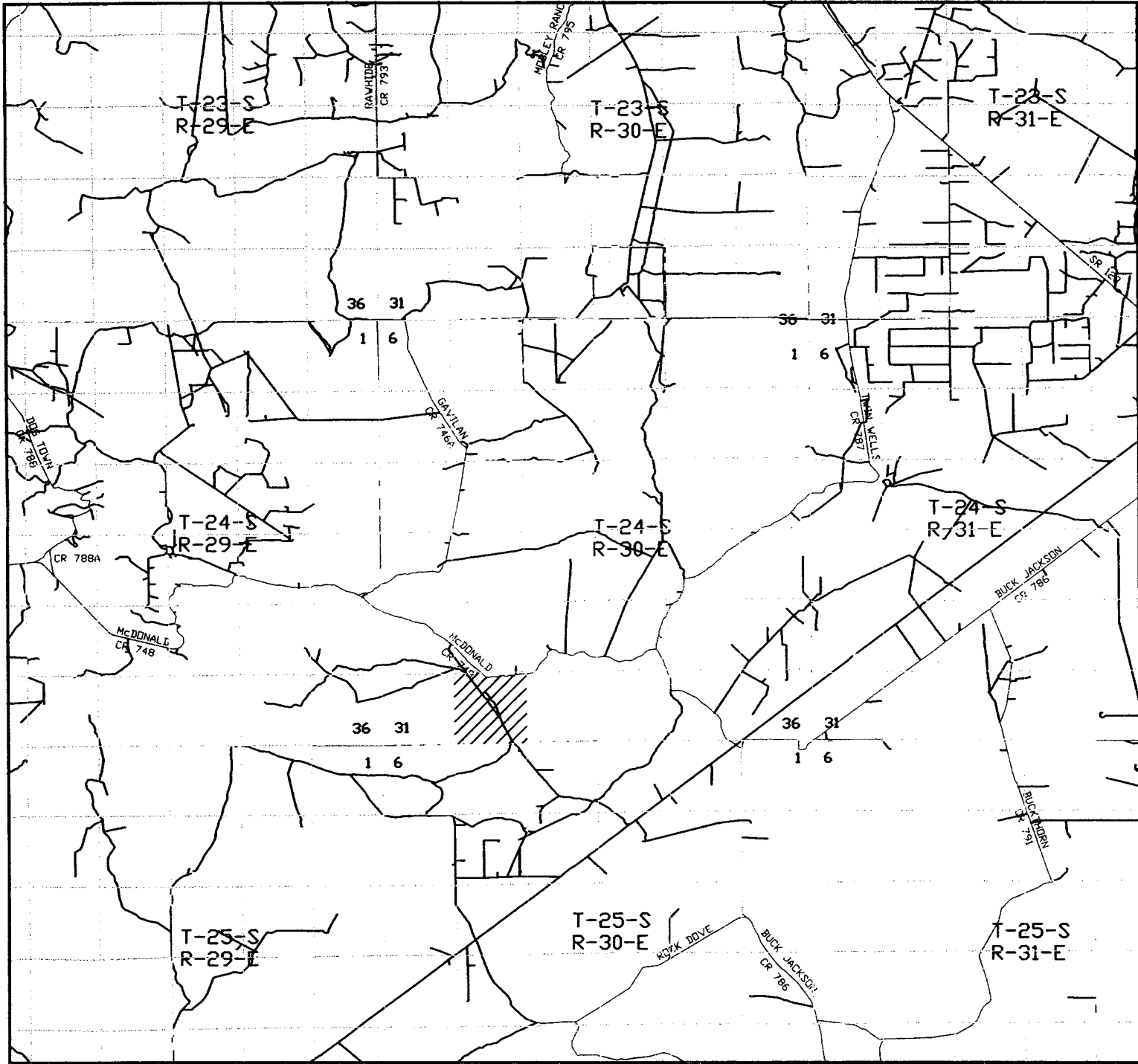
W.O. Number: 5391AA - KJG #7

Survey Date: 05-27-2005

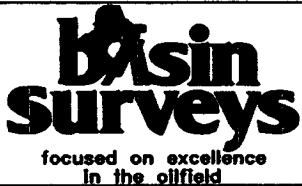
Scale: 1" = 2000'

Date: 06-03-2005

**BASS ENTERPRISES  
 PRODUCTION CO.**



**POKER LAKE UNIT #244**  
 Located at 2290' FSL and 100' FWL  
 Section 32, Township 24 South, Range 30 East,  
 N.M.P.M., Eddy County, New Mexico.



P.O. Box 1786  
 1120 N. West County Rd.  
 Hobbs, New Mexico 88241  
 (505) 393-7316 - Office  
 (505) 392-3074 - Fax  
 basinsurveys.com

W.O. Number: 5391AA - KJG #7

Survey Date: 05-27-2005

Scale: 1" = 2 MILES

Date: 06-03-2005

**BASS ENTERPRISES  
 PRODUCTION CO.**

**EIGHT POINT DRILLING PROGRAM  
BASS ENTERPRISES PRODUCTION CO.**

**NAME OF WELL: POKER LAKE UNIT #244**

**LEGAL DESCRIPTION - SURFACE: 2290' FSL & 100' FWL, Section 32, T-24-S, R-30-E, Eddy County, New Mexico.**

**POINT 1: ESTIMATED FORMATION TOPS**

(See No. 2 Below)

**POINT 2: WATER, OIL, GAS AND/OR MINERAL BEARING FORMATIONS**

Anticipated Formation Tops: KB 3215' (est)  
GL 3195'

<u>FORMATION</u>	<u>ESTIMATED TOP FROM KB</u>	<u>ESTIMATED SUBSEA TOP</u>	<u>BEARING</u>
T/Salt	245'	+ 2,970'	Barren
B/Salt	3,335'	- 120'	Barren
T/Lamar	3,540'	- 325'	Barren
T/Ramsey	3,574'	- 359'	Oil/Gas
T/Lwr Brushy Canyon	7,103'	- 3,888'	Oil/Gas
T/"Y" Sand	7,220'	- 4,005'	Oil/Gas
T/Bone Springs Lime	7,395'	- 4,180'	Oil/Gas
TD	7,700'	- 4,485'	

**POINT 3: CASING PROGRAM**

<u>TYPE</u>	<u>INTERVALS</u>	<u>PURPOSE</u>	<u>CONDITION</u>
16"	0' - 60'	Conductor	Contractor Discretion
11-3/4", 42#, WC-50, ST&C	0' - 245'	Surface	New
8-5/8", 32#, WC-50, LT&C	0' - 3,540'	Intermediate	New
5-1/2", 15.50#, K-55, LT&C	0' - 6,500'	Production	New
5-1/2", 17#, K-55, LT&C	6,500' - 7,700'	Production	New

**POINT 4: PRESSURE CONTROL EQUIPMENT (SEE ATTACHED DIAGRAM)**

A BOPE equivalent to requirements of Onshore Oil & Gas Order No. 2 – 2000 psi system (Diagram 1) will be nipped up on the surface casing head. The BOP stack, choke, kill lines, kelly cocks, inside BOP, etc. when installed on the surface casing head will be hydro-tested to 70% of internal yield pressure of casing or 1000 psig whichever is less with the rig pump. The BOPE when rigged up on the intermediate casing spool will be as described in Diagram 2 and will be tested to 3000 psig by independent tester. (As per Onshore Oil & Gas Order No 2 – 3000 psig system) In addition to the high pressure test, a low pressure (200 psig) test will be required. These tests will be performed:

- a) Upon installation
- b) After any component changes
- c) Fifteen days after a previous test
- d) As required by well conditions

A function test to insure that the preventers are operating correctly will be performed on each trip.

**POINT 5: MUD PROGRAM**

<u>DEPTH</u>	<u>MUD TYPE</u>	<u>WEIGHT</u>	<u>FV</u>	<u>PV</u>	<u>YP</u>	<u>FL</u>	<u>Ph</u>
0' - 245'	FW Spud Mud	8.5 - 9.2	45-35	NC	NC	NC	10.0
245' - 3540'	BW	10.0	28-30	NC	NC	NC	9.5-10.5
3550' - 6000'	Fresh Water	8.4 - 8.9	28-30	NC	NC	NC	9.5-10.5
6000' - 6900'	FW/Starch	8.7 - 8.9	30-35	4	8	<100	9.5-10.5
6900' - 7700'	FW/Starch	8.7 - 8.9	40-45	4	8	<25	9.5-10.5

*\*Will increase vis for logging purposes only.*

**POINT 6: TECHNICAL STAGES OF OPERATION****A) TESTING**

None anticipated.

**B) LOGGING**

GR-CNL-LDT-LLD from TD to Base of Salt (+/-3,335). Run GR-CNL from Base of Salt to surface.

**C) CONVENTIONAL CORING**

None anticipated.

**D) CEMENT**

<u>INTERVAL</u>	<u>AMOUNT SXS</u>	<u>FT OF FILL</u>	<u>TYPE</u>	<u>GALS/SX</u>	<u>PPG</u>	<u>FT<sup>3</sup>/SX</u>	<u>COMPRESSIVE</u>	
<u>SURFACE:</u> Circulate cement to surface.								
Lead 0'-245' (100% excess)	200	240	Premium Plus+2% CaCl <sub>2</sub> 1/ 4# Flocele	6.33	14.8	1.35		
<u>INTERMEDIATE:</u>								
Lead 1000'-3040' (200% excess)	700	2040	Interfill C+0.3% Halad R-322	14.11	11.9	2.45		
Tail 3040' - 3540 (200% excess)	300	500	Premium Plus+2% CaCl <sub>2</sub>	6.33	14.8	1.35		
<u>PRODUCTION:</u>								
Lead 3075'-7700' (50% excess)	900	4625	Premium Plus + 1% Zone Sealant 2000	6.32	11.9	1.65	Nitrogen 300/600 scf/bbl	Strength 1200

**E) DIRECTIONAL DRILLING**

No directional services anticipated.

**POINT 7: ANTICIPATED RESERVOIR CONDITIONS**

Normal pressures are anticipated throughout Delaware section. A BHP of 3322 psi (max) or MWE of 8.7 ppg is expected. Lost circulation may exist in the Delaware section from 3,574'- 7,700'. No H<sub>2</sub>S is anticipated.

Estimated BHT is 140° F.

**POINT 8: OTHER PERTINENT INFORMATION****A) Auxiliary Equipment**

Upper and lower kelly cocks. Full opening stab in valve on the rig floor.

**B) Anticipated Starting Date**

Upon approval

12 days drilling operations

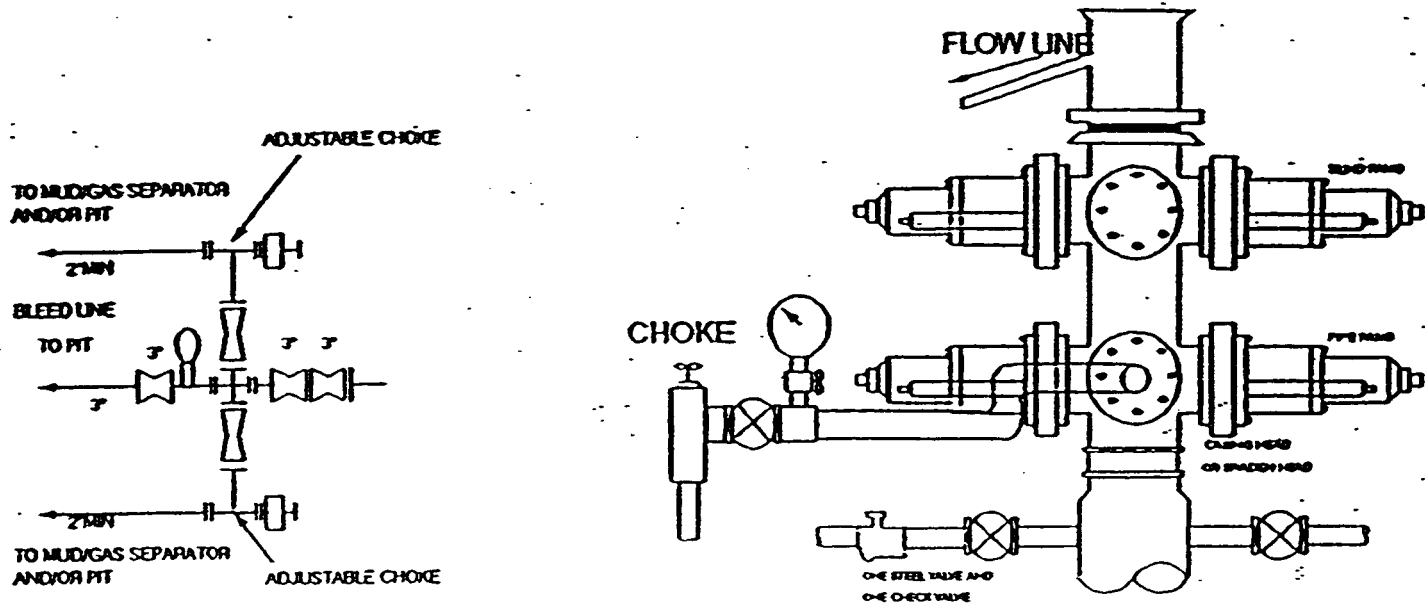
14 days completion operations

GEG/cdg

June 17, 2005



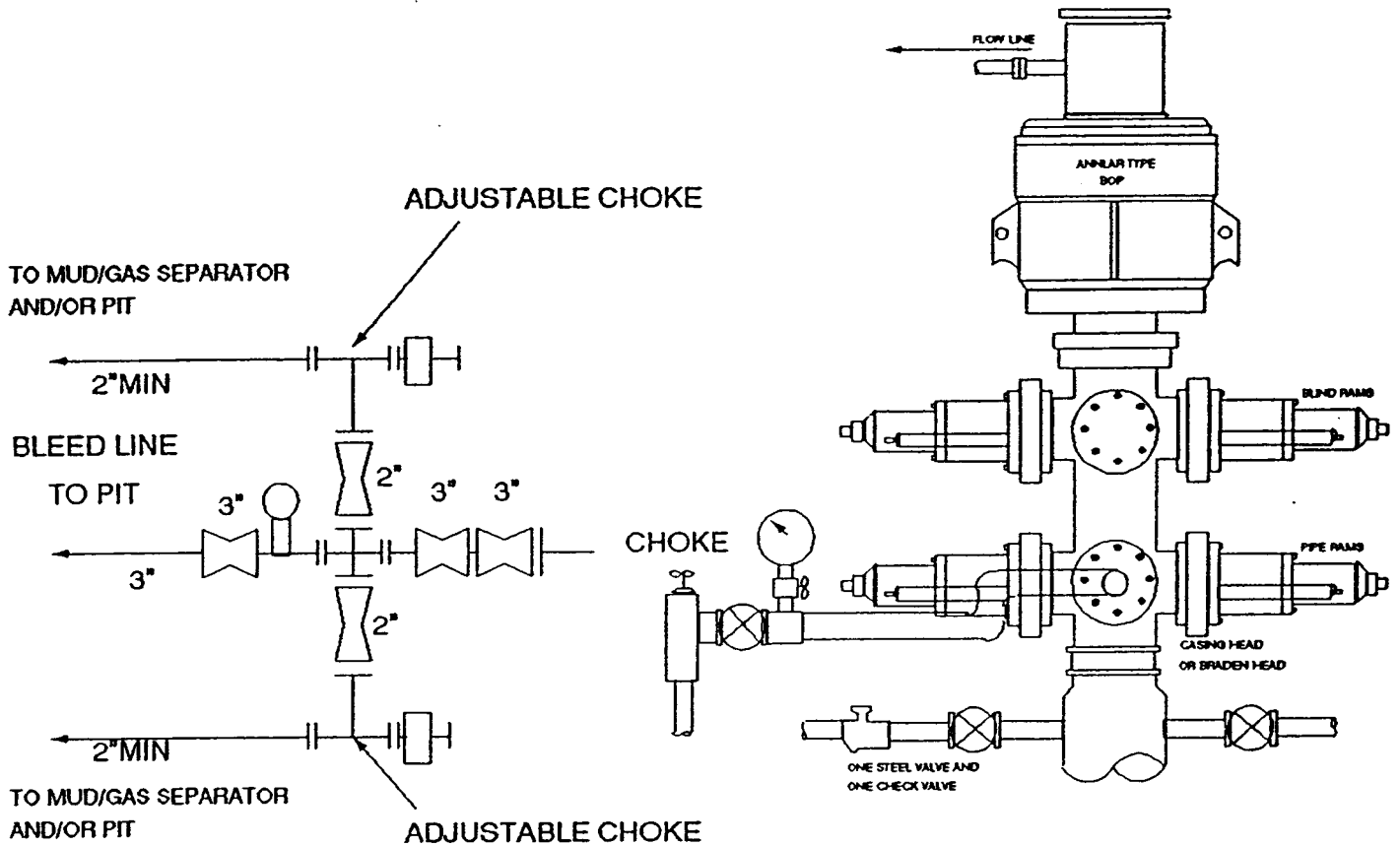
# 2000 PSI WP



## THE FOLLOWING CONSTITUTE MINIMUM BLOWOUT PREVENTER REQUIREMENTS

- A. One double gate blowout preventer with lower rams for pipe and upper rams blind, all hydraulically controlled.
- B. Opening on preventers between rams to be flanged, studded or clamped and at least two inches in diameter.
- C. All connections from operating manifold to preventers to be all steel hose or tube a minimum of one inch in diameter.
- D. The available closing pressure shall be at least 15% in excess of that required with sufficient volume to operate (close, open, and re-close) the preventers.
- E. All connections to and from preventers to have a pressure rating equivalent to that of the BOP's.
- F. Manual controls to be installed before drilling cement plug.
- G. Valve to control flow through drill pipe to be located on rig floor.
- H. All chokes will be adjustable. Choke spool may be used between rams.

# 3000 PSI WP



## THE FOLLOWING CONSTITUTE MINIMUM BLOWOUT PREVENTER REQUIREMENTS

- A. One double gate blowout preventer with lower rams for pipe and upper rams blind, all hydraulically controlled.
- B. Opening on preventers between rams to be flanged, studded or clamped and at least two inches in diameter.
- C. All connections from operating manifold to preventers to be all steel hose or tube a minimum of one inch in diameter.
- D. The available closing pressure shall be at least 15% in excess of that required with sufficient volume to operate (close, open, and re-close) the preventers.
- E. All connections to and from preventers to have a pressure rating equivalent to that of the BOP's.
- F. Manual controls to be installed before drilling cement plug.
- G. Valve to control flow through drill pipe to be located on rig floor.
- H. All chokes will be adjustable. Choke spool may be used between rams.