

Drilling 12 1/4" hole
below 13 3/8" Casing

30-025-43292

Fill Line

Flowline

OCD - HOBBS
06/07/2016
RECEIVED

SRR & A

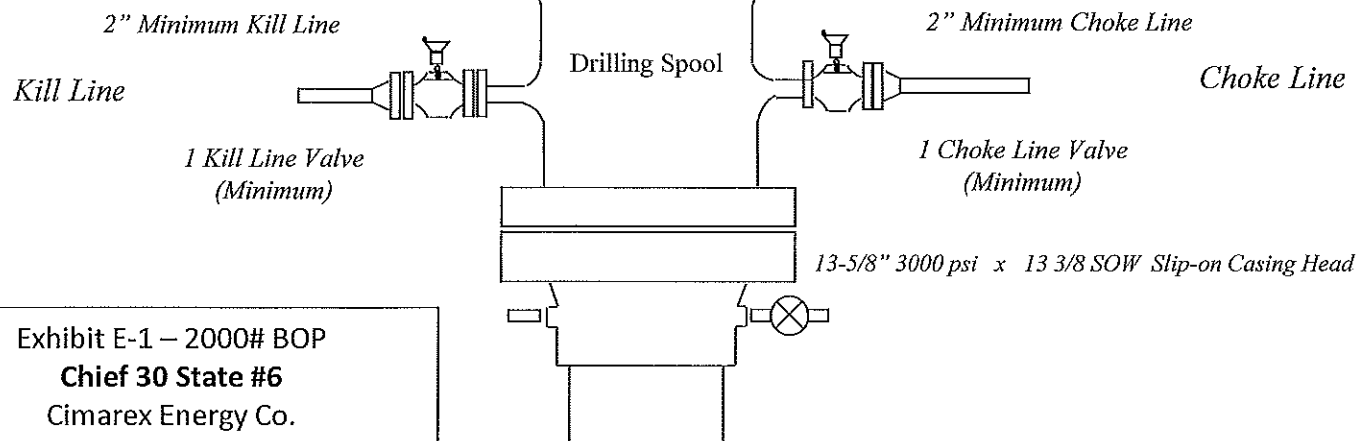
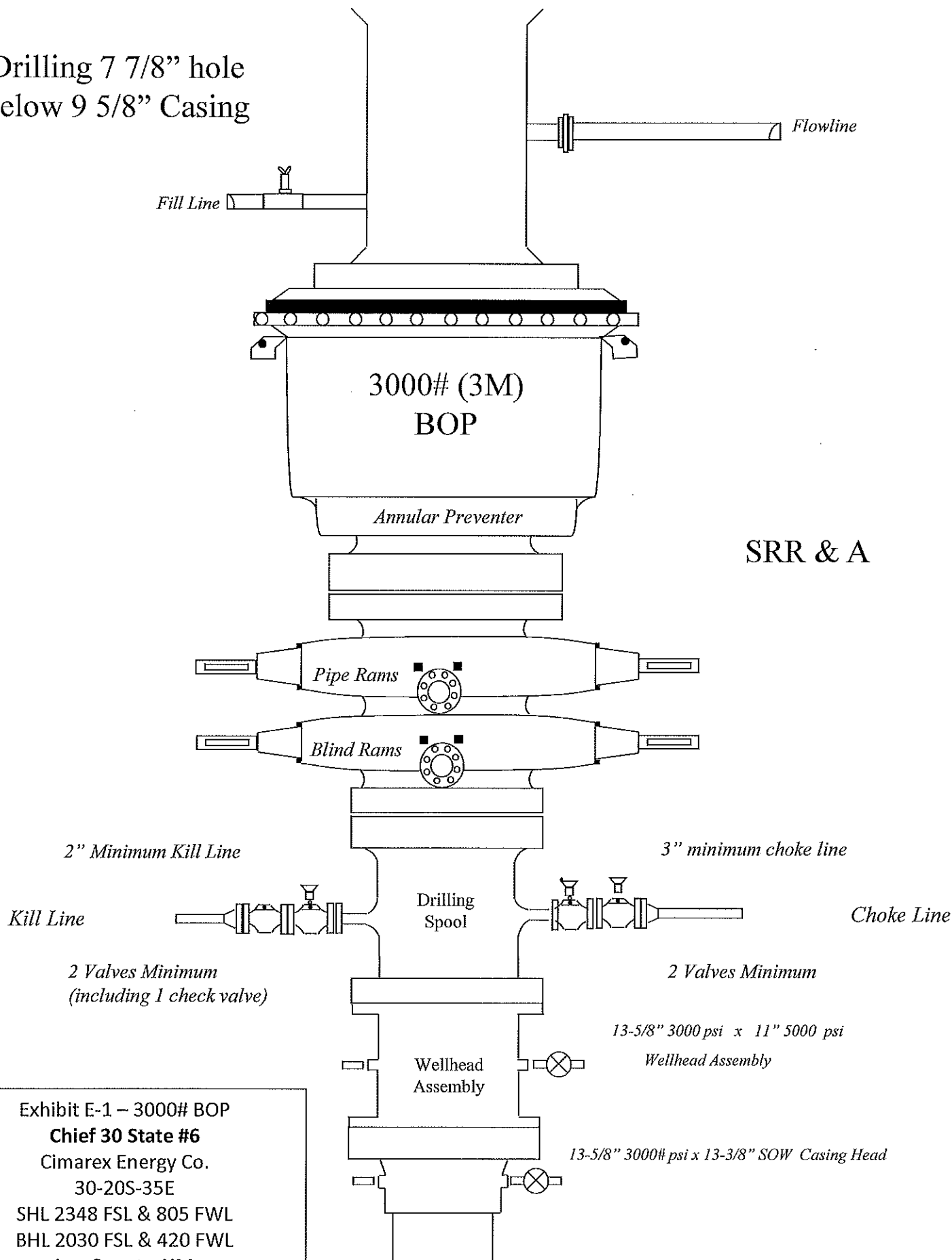


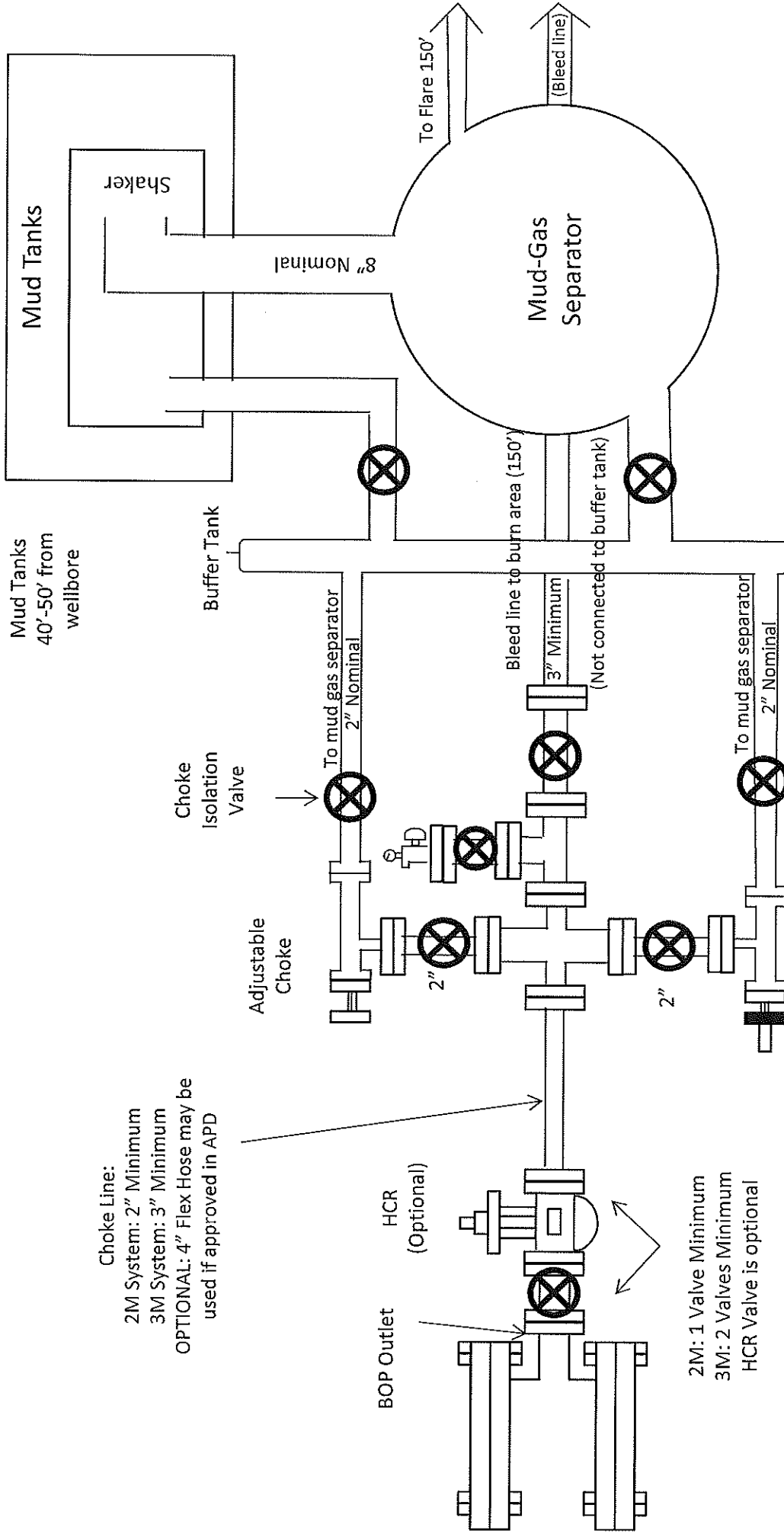
Exhibit E-1 – 2000# BOP
Chief 30 State #6
Cimarex Energy Co.
30-20S-35E
SHL 2348 FSL & 805 FWL
BHL 2030 FSL & 420 FWL
Lea County, NM

Drilling 7 7/8" hole
below 9 5/8" Casing



SRR & A

Exhibit E-1 – 3000# BOP
Chief 30 State #6
Cimarex Energy Co.
30-20S-35E
SHL 2348 FSL & 805 FWL
BHL 2030 FSL & 420 FWL
Lea County, NM



Choke Line:
 2M System: 2" Minimum
 3M System: 3" Minimum
 OPTIONAL: 4" Flex Hose may be
 used if approved in APD

BOP Outlet
 HCR
 (Optional)

2M: 1 Valve Minimum
 3M: 2 Valves Minimum
 HCR Valve is optional

REMOTELY
 OPERATED
 Adjustable
 Choke

Drilling Operations Choke Manifold 2M/3M Service

Exhibit E-1 – Choke Manifold Diagram
Chief 30 State #6
 Cimarex Energy Co.
 30-20S-35E
 SHL 2348 FSL & 805 FWL
 BHL 2030 FSL & 420 FWL
 Lea County, NM