

**OCD - HOBBS**  
**07/12/2016**  
**RECEIVED**



COMPANY: Mewbourne Oil Company  
 WELL: Salado Draw 9 A3CN Fed Com #1H  
 COUNTY: Lea County N.M.  
 DATUM: NAD 1927 (NADCON CONUS)



GRID CORRECTION: To convert a Magnetic Direction to a Grid Direction, Add 6.79°

OFFICE: 936.582.7296

GEODETTIC ZONE: New Mexico East 3001  
 3308 + 20 @ 3328.0usft (Patterson 36)  
 GROUND ELEVATION: 3308.0

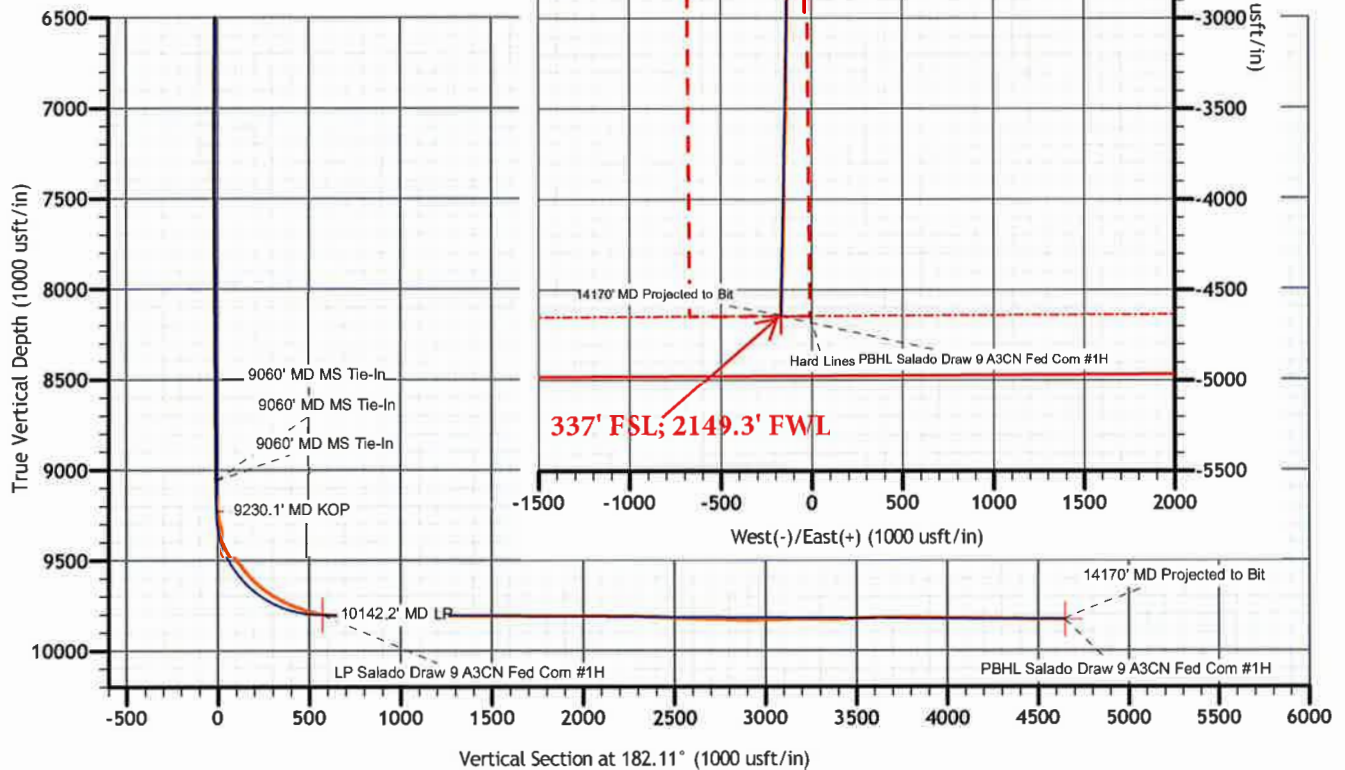
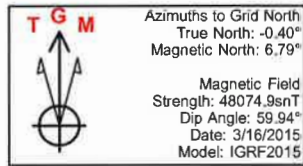
+N/-S +E/-W Northing Easting Latitude Longitude  
 0.0 0.0 387941.30 734081.30 32° 3' 51.528 N 103° 34' 39.724 W

Slot

#### PLAN SECTIONS

Sec	MD	Inc	Azi	TVD	+N/-S	+E/-W	Dleg	TFace	Vsect	Target
1	9060.0	0.49	267.87	9058.9	10.9	-18.4	0.00	0.00	-10.2	
2	9230.1	0.49	267.87	9229.0	10.8	-19.8	0.00	0.00	-10.1	
3	10019.8	79.01	187.22	9790.9	-448.9	-82.1	10.00	-80.74	451.6	LP Salado Draw 9 A3CN Fed Com #1H
4	10142.2	89.65	181.13	9803.0	-570.2	-90.9	10.00	-30.04	573.2	PBHL Salado Draw 9 A3CN Fed Com #1H
5	14217.4	89.65	181.13	9828.0	-4644.6	-171.1	0.00	0.00	4647.7	

Hardlines  
 330' FNL/FSL  
 1650' ; 2310' FWL





# **Mewbourne Oil Company .**

**Lea County N.M.**

**Section 9-26S-33E Salado Draw 9 A3CN Fed Com #1H**

**Salado Draw 9 A3CN Fed Com #1H**

**Original Hole**

**Design: Original Hole**

## **Standard Survey Report**

**20 April, 2015**





# Stryker Directional Survey Report



<b>Company:</b>	Mewbourne Oil Company .	<b>Local Co-ordinate Reference:</b>	Well Salado Draw 9 A3CN Fed Com #1H
<b>Project:</b>	Lea County N.M.	<b>TVD Reference:</b>	3308 + 20 @ 3328.0usft (Patterson 36)
<b>Site:</b>	Section 9-26S-33E Salado Draw 9 A3CN Fed Com #1H	<b>MD Reference:</b>	3308 + 20 @ 3328.0usft (Patterson 36)
<b>Well:</b>	Salado Draw 9 A3CN Fed Com #1H	<b>North Reference:</b>	Grid
<b>Wellbore:</b>	Original Hole	<b>Survey Calculation Method:</b>	Minimum Curvature
<b>Design:</b>	Original Hole	<b>Database:</b>	Stryker_EDM

<b>Project</b>	Lea County N.M.		
<b>Map System:</b>	US State Plane 1927 (Exact solution)	<b>System Datum:</b>	Mean Sea Level
<b>Geo Datum:</b>	NAD 1927 (NADCON CONUS)		
<b>Map Zone:</b>	New Mexico East 3001		

<b>Site</b>	Section 9-26S-33E Salado Draw 9 A3CN Fed Com #1H		
<b>Site Position:</b>		<b>Northing:</b>	387,941.30 usft
<b>From:</b>	Map	<b>Easting:</b>	734,081.30 usft
<b>Position Uncertainty:</b>	0.0 usft	<b>Slot Radius:</b>	13-3/16 "
		<b>Latitude:</b>	32° 3' 51.528 N
		<b>Longitude:</b>	103° 34' 39.724 W
		<b>Grid Convergence:</b>	0.40 °

<b>Well</b>	Salado Draw 9 A3CN Fed Com #1H		
<b>Well Position</b>	<b>+N/-S</b>	0.0 usft	<b>Northing:</b> 387,941.30 usft
	<b>+E/-W</b>	0.0 usft	<b>Easting:</b> 734,081.30 usft
<b>Position Uncertainty</b>	0.0 usft	<b>Wellhead Elevation:</b>	0.0 usft
		<b>Latitude:</b>	32° 3' 51.528 N
		<b>Longitude:</b>	103° 34' 39.724 W
		<b>Ground Level:</b>	3,308.0 usft

<b>Wellbore</b>	Original Hole
-----------------	---------------

<b>Magnetics</b>	<b>Model Name</b>	<b>Sample Date</b>	<b>Declination (°)</b>	<b>Dip Angle (°)</b>	<b>Field Strength (nT)</b>
	IGRF2015	3/16/2015	7.19	59.94	48,075

<b>Design</b>	Original Hole
---------------	---------------

<b>Audit Notes:</b>	
<b>Version:</b>	1.0
<b>Phase:</b>	ACTUAL
<b>Tie On Depth:</b>	0.0

<b>Vertical Section:</b>	<b>Depth From (TVD) (usft)</b>	<b>+N/-S (usft)</b>	<b>+E/-W (usft)</b>	<b>Direction (°)</b>
	0.0	0.0	0.0	182.11

<b>Survey Program</b>	<b>Date</b> 4/20/2015		
<b>From (usft)</b>	<b>To (usft)</b>	<b>Survey (Wellbore)</b>	<b>Tool Name</b>
100.0	9,060.0	Survey #3 (Original Hole)	
9,120.0	14,170.0	Survey #1 (Original Hole)	MWD
			MWD v3:standard declination

<b>Survey</b>										
<b>Measured Depth (usft)</b>	<b>Inclination (°)</b>	<b>Azimuth (°)</b>	<b>Vertical Depth (usft)</b>	<b>+N/-S (usft)</b>	<b>+E/-W (usft)</b>	<b>Vertical Section (usft)</b>	<b>Dogleg Rate (°/100usft)</b>	<b>Build Rate (°/100usft)</b>	<b>Turn Rate (°/100usft)</b>	
0.0	0.00	0.00	0.0	0.0	0.0	0.0	0.00	0.00	0.00	
100.0	0.83	123.33	100.0	-0.4	0.6	0.4	0.83	0.83	0.00	
200.0	0.81	123.39	200.0	-1.2	1.8	1.1	0.02	-0.02	0.06	
300.0	0.65	120.38	300.0	-1.9	2.9	1.8	0.16	-0.16	-3.01	
400.0	0.37	89.69	400.0	-2.1	3.7	2.0	0.38	-0.28	-30.69	
500.0	0.45	4.87	500.0	-1.8	4.0	1.6	0.56	0.08	-84.82	
600.0	1.34	341.54	600.0	-0.3	3.7	0.1	0.94	0.89	-23.33	
700.0	1.96	338.65	699.9	2.4	2.7	-2.5	0.63	0.62	-2.89	
800.0	1.90	335.03	799.9	5.5	1.4	-5.6	0.14	-0.06	-3.62	



# Stryker Directional Survey Report



<b>Company:</b>	Mewbourne Oil Company	<b>Local Co-ordinate Reference:</b>	Well Salado Draw 9 A3CN Fed Com #1H
<b>Project:</b>	Lea County N.M.	<b>TVD Reference:</b>	3308 + 20 @ 3328.0usft (Patterson 36)
<b>Site:</b>	Section 9-26S-33E Salado Draw 9 A3CN Fed Com #1H	<b>MD Reference:</b>	3308 + 20 @ 3328.0usft (Patterson 36)
<b>Well:</b>	Salado Draw 9 A3CN Fed Com #1H	<b>North Reference:</b>	Grid
<b>Wellbore:</b>	Original Hole	<b>Survey Calculation Method:</b>	Minimum Curvature
<b>Design:</b>	Original Hole	<b>Database:</b>	Stryker_EDM

## Survey

Measured Depth (usft)	Inclination (°)	Azimuth (°)	Vertical Depth (usft)	+N/-S (usft)	+E/-W (usft)	Vertical Section (usft)	Dogleg Rate (°/100usft)	Build Rate (°/100usft)	Turn Rate (°/100usft)
900.0	2.03	340.98	899.8	8.7	0.1	-8.7	0.24	0.13	5.95
1,000.0	1.88	337.95	999.7	11.9	-1.1	-11.9	0.18	-0.15	-3.03
1,100.0	0.93	279.41	1,099.7	13.6	-2.5	-13.5	1.60	-0.95	-58.54
1,200.0	1.10	171.93	1,199.7	12.8	-3.2	-12.6	1.64	0.17	-107.48
1,300.0	1.22	110.03	1,299.7	11.4	-2.0	-11.4	1.20	0.12	-61.90
1,400.0	1.13	31.98	1,399.7	11.9	-0.5	-11.9	1.48	-0.09	-78.05
1,500.0	0.96	292.13	1,499.7	13.1	-0.8	-13.0	1.60	-0.17	-99.85
1,600.0	1.30	206.86	1,599.7	12.4	-2.0	-12.3	1.55	0.34	-85.27
1,700.0	1.31	145.01	1,699.6	10.4	-1.9	-10.3	1.34	0.01	-61.85
1,800.0	1.23	62.13	1,799.6	10.0	-0.3	-10.0	1.68	-0.08	-82.88
1,900.0	0.97	339.78	1,899.6	11.3	0.4	-11.3	1.46	-0.26	-82.35
2,000.0	1.08	248.35	1,999.6	11.7	-0.8	-11.7	1.47	0.11	-91.43
2,100.0	1.36	177.70	2,099.6	10.2	-1.6	-10.1	1.43	0.28	-70.65
2,200.0	1.24	102.87	2,199.6	8.8	-0.5	-8.7	1.58	-0.12	-74.83
2,300.0	1.52	44.11	2,299.5	9.5	1.4	-9.5	1.38	0.28	-58.76
2,400.0	1.43	12.46	2,399.5	11.6	2.6	-11.7	0.81	-0.09	-31.65
2,500.0	1.01	325.44	2,499.5	13.6	2.4	-13.7	1.05	-0.42	-47.02
2,600.0	0.84	266.82	2,599.5	14.3	1.2	-14.3	0.92	-0.17	-58.62
2,700.0	1.06	191.69	2,699.5	13.3	0.3	-13.3	1.17	0.22	-75.13
2,800.0	0.97	96.12	2,799.4	12.3	0.9	-12.4	1.50	-0.09	-95.57
2,900.0	1.36	21.41	2,899.4	13.3	2.2	-13.4	1.45	0.39	-74.71
3,000.0	1.22	338.23	2,999.4	15.4	2.2	-15.5	0.96	-0.14	-43.18
3,100.0	1.06	283.61	3,099.4	16.6	0.9	-16.7	1.06	-0.16	-54.62
3,200.0	0.57	181.62	3,199.4	16.4	0.0	-16.4	1.30	-0.49	-101.99
3,300.0	1.04	72.93	3,299.4	16.1	0.9	-16.2	1.34	0.47	-108.69
3,400.0	1.24	1.34	3,399.4	17.5	1.8	-17.5	1.34	0.20	-71.59
3,500.0	1.35	290.22	3,499.3	19.0	0.7	-19.0	1.51	0.11	-71.12
3,600.0	1.04	238.15	3,599.3	18.9	-1.2	-18.8	1.09	-0.31	-52.07
3,700.0	0.71	126.62	3,699.3	18.1	-1.5	-18.0	1.46	-0.33	-111.53
3,800.0	0.65	40.84	3,799.3	18.1	-0.6	-18.1	0.93	-0.06	-85.78
3,900.0	1.32	307.19	3,899.3	19.2	-1.1	-19.2	1.51	0.67	-93.65
4,000.0	1.55	226.67	3,999.3	19.0	-3.0	-18.9	1.86	0.23	-80.52
4,100.0	1.38	165.59	4,099.2	16.9	-3.7	-16.8	1.50	-0.17	-61.08
4,200.0	1.02	95.77	4,199.2	15.7	-2.5	-15.6	1.40	-0.36	-69.82
4,300.0	1.13	33.16	4,299.2	16.4	-1.1	-16.3	1.12	0.11	-62.61
4,400.0	1.27	338.85	4,399.2	18.3	-1.0	-18.2	1.10	0.14	-54.31
4,500.0	0.63	272.43	4,499.2	19.3	-1.9	-19.2	1.17	-0.64	-66.42
4,600.0	0.88	112.48	4,599.2	19.0	-1.8	-19.0	1.49	0.25	-159.95
4,700.0	0.83	78.96	4,699.2	18.9	-0.3	-18.9	0.50	-0.05	-33.52
4,800.0	1.03	350.67	4,799.2	19.9	0.2	-19.9	1.30	0.20	-88.29
4,900.0	1.02	259.90	4,899.2	20.6	-0.8	-20.6	1.46	-0.01	-90.77
5,000.0	1.20	223.59	4,999.1	19.7	-2.4	-19.6	0.71	0.18	-36.31





## Stryker Directional Survey Report



<b>Company:</b>	Mewbourne Oil Company .	<b>Local Co-ordinate Reference:</b>	Well Salado Draw 9 A3CN Fed Com #1H
<b>Project:</b>	Lea County N.M.	<b>TVD Reference:</b>	3308 + 20 @ 3328.0usft (Patterson 36)
<b>Site:</b>	Section 9-26S-33E Salado Draw 9 A3CN Fed Com #1H	<b>MD Reference:</b>	3308 + 20 @ 3328.0usft (Patterson 36)
<b>Well:</b>	Salado Draw 9 A3CN Fed Com #1H	<b>North Reference:</b>	Grid
<b>Wellbore:</b>	Original Hole	<b>Survey Calculation Method:</b>	Minimum Curvature
<b>Design:</b>	Original Hole	<b>Database:</b>	Stryker_EDM

### Survey

Measured Depth (usft)	Inclination (°)	Azimuth (°)	Vertical Depth (usft)	+N/-S (usft)	+E/-W (usft)	Vertical Section (usft)	Dogleg Rate (°/100usft)	Build Rate (°/100usft)	Turn Rate (°/100usft)
5,100.0	1.48	222.98	5,099.1	18.0	-4.0	-17.9	0.28	0.28	-0.61
5,200.0	1.16	215.69	5,199.1	16.3	-5.5	-16.0	0.36	-0.32	-7.29
5,300.0	1.08	245.14	5,299.1	15.0	-6.9	-14.8	0.57	-0.08	29.45
5,400.0	0.69	235.83	5,399.1	14.3	-8.3	-14.0	0.41	-0.39	-9.31
5,500.0	0.71	273.05	5,499.0	14.0	-9.4	-13.6	0.45	0.02	37.22
5,600.0	0.43	247.65	5,599.0	13.9	-10.4	-13.5	0.37	-0.28	-25.40
5,700.0	0.66	267.34	5,699.0	13.7	-11.3	-13.3	0.29	0.23	19.69
5,800.0	0.37	273.45	5,799.0	13.7	-12.2	-13.3	0.29	-0.29	6.11
5,900.0	0.68	296.95	5,899.0	14.0	-13.0	-13.5	0.37	0.31	23.50
6,000.0	0.50	269.25	5,999.0	14.3	-14.0	-13.7	0.33	-0.18	-27.70
6,100.0	0.51	326.58	6,099.0	14.6	-14.7	-14.1	0.48	0.01	57.33
6,200.0	0.55	287.03	6,199.0	15.1	-15.4	-14.6	0.36	0.04	-39.55
6,300.0	0.59	333.15	6,299.0	15.7	-16.1	-15.1	0.45	0.04	46.12
6,400.0	0.25	309.98	6,399.0	16.3	-16.5	-15.7	0.37	-0.34	-23.17
6,500.0	0.63	319.34	6,499.0	16.9	-17.0	-16.3	0.39	0.38	9.36
6,600.0	0.42	348.12	6,599.0	17.7	-17.4	-17.0	0.33	-0.21	28.78
6,700.0	0.62	316.69	6,699.0	18.4	-17.9	-17.8	0.34	0.20	-31.43
6,800.0	0.50	358.27	6,799.0	19.3	-18.3	-18.6	0.41	-0.12	41.58
6,900.0	0.28	290.05	6,899.0	19.8	-18.5	-19.1	0.47	-0.22	-68.22
7,000.0	0.22	11.62	6,999.0	20.0	-18.7	-19.3	0.33	-0.06	81.57
7,100.0	0.10	12.05	7,099.0	20.3	-18.6	-19.6	0.12	-0.12	0.43
7,200.0	0.25	202.38	7,199.0	20.2	-18.7	-19.5	0.35	0.15	-169.67
7,300.0	0.14	10.18	7,299.0	20.1	-18.8	-19.4	0.39	-0.11	167.80
7,400.0	0.50	172.71	7,399.0	19.8	-18.7	-19.1	0.63	0.36	162.53
7,500.0	0.20	136.53	7,499.0	19.2	-18.5	-18.6	0.36	-0.30	-36.18
7,600.0	0.36	200.97	7,599.0	18.8	-18.5	-18.1	0.33	0.16	64.44
7,700.0	0.33	177.47	7,699.0	18.2	-18.6	-17.6	0.14	-0.03	-23.50
7,800.0	0.31	140.68	7,799.0	17.8	-18.4	-17.1	0.20	-0.02	-36.79
7,900.0	0.06	175.58	7,899.0	17.5	-18.2	-16.8	0.26	-0.25	34.90
8,000.0	0.33	196.88	7,999.0	17.2	-18.3	-16.5	0.27	0.27	21.30
8,100.0	0.52	145.92	8,099.0	16.5	-18.2	-15.8	0.40	0.19	-50.96
8,200.0	0.61	136.99	8,199.0	15.7	-17.5	-15.1	0.13	0.09	-8.93
8,300.0	0.46	137.00	8,299.0	15.1	-16.9	-14.4	0.15	-0.15	0.01
8,400.0	0.43	154.01	8,399.0	14.4	-16.5	-13.8	0.13	-0.03	17.01
8,500.0	0.53	166.48	8,499.0	13.6	-16.2	-13.0	0.14	0.10	12.47
8,600.0	0.42	187.62	8,599.0	12.8	-16.1	-12.2	0.21	-0.11	21.14
8,700.0	0.42	202.52	8,699.0	12.1	-16.3	-11.5	0.11	0.00	14.90
8,800.0	0.45	201.39	8,799.0	11.4	-16.6	-10.8	0.03	0.03	-1.13
8,900.0	0.36	235.88	8,898.9	10.9	-17.0	-10.3	0.26	-0.09	34.49
9,000.0	0.64	283.07	8,998.9	10.8	-17.8	-10.2	0.48	0.28	47.19
9,060.0	0.49	267.87	9,058.9	10.9	-18.4	-10.2	0.35	-0.25	-25.33
<b>9060' MD MS Tie-In</b>									
9,120.0	0.50	266.20	9,118.9	10.9	-18.9	-10.2	0.03	0.02	-2.78



## Stryker Directional Survey Report



<b>Company:</b>	Mewbourne Oil Company .	<b>Local Co-ordinate Reference:</b>	Well Salado Draw 9 A3CN Fed Com #1H
<b>Project:</b>	Lea County N.M.	<b>TVD Reference:</b>	3308 + 20 @ 3328.0usft (Patterson 36)
<b>Site:</b>	Section 9-26S-33E Salado Draw 9 A3CN Fed Com #1H	<b>MD Reference:</b>	3308 + 20 @ 3328.0usft (Patterson 36)
<b>Well:</b>	Salado Draw 9 A3CN Fed Com #1H	<b>North Reference:</b>	Grid
<b>Wellbore:</b>	Original Hole	<b>Survey Calculation Method:</b>	Minimum Curvature
<b>Design:</b>	Original Hole	<b>Database:</b>	Stryker_EDM

### Survey

Measured Depth (usft)	Inclination (°)	Azimuth (°)	Vertical Depth (usft)	+N/-S (usft)	+E/-W (usft)	Vertical Section (usft)	Dogleg Rate (°/100usft)	Build Rate (°/100usft)	Turn Rate (°/100usft)
9,151.0	2.30	200.70	9,149.9	10.3	-19.3	-9.6	6.91	5.81	-211.29
9,183.0	4.70	198.80	9,181.9	8.4	-19.9	-7.7	7.51	7.50	-5.94
9,215.0	6.20	204.80	9,213.7	5.6	-21.1	-4.9	5.01	4.69	18.75
9,247.0	8.40	201.60	9,245.5	1.9	-22.6	-1.1	6.99	6.88	-10.00
9,278.0	11.60	199.00	9,276.0	-3.2	-24.5	4.1	10.42	10.32	-8.39
9,310.0	14.90	197.00	9,307.1	-10.1	-26.7	11.1	10.41	10.31	-6.25
9,342.0	18.50	194.70	9,337.8	-19.0	-29.2	20.1	11.44	11.25	-7.19
9,369.0	21.30	188.90	9,363.2	-28.0	-31.1	29.1	12.68	10.37	-21.48
9,403.0	24.00	184.20	9,394.5	-41.0	-32.5	42.2	9.55	7.94	-13.82
9,437.0	27.30	183.30	9,425.2	-55.7	-33.5	56.9	9.77	9.71	-2.65
9,469.0	31.60	183.80	9,453.0	-71.4	-34.5	72.6	13.46	13.44	1.56
9,500.0	34.50	184.40	9,479.0	-88.2	-35.7	89.5	9.41	9.35	1.94
9,531.0	35.60	186.30	9,504.4	-105.9	-37.4	107.3	5.00	3.55	6.13
9,563.0	36.90	186.50	9,530.2	-124.8	-39.5	126.1	4.08	4.06	0.63
9,595.0	38.90	185.80	9,555.5	-144.3	-41.6	145.7	6.39	6.25	-2.19
9,627.0	40.70	185.10	9,580.0	-164.7	-43.5	166.2	5.80	5.63	-2.19
9,658.0	43.20	183.50	9,603.1	-185.3	-45.1	186.9	8.77	8.06	-5.16
9,690.0	46.20	183.70	9,625.8	-207.8	-46.5	209.4	9.39	9.38	0.63
9,722.0	50.10	184.60	9,647.2	-231.6	-48.2	233.2	12.37	12.19	2.81
9,754.0	53.80	185.40	9,666.9	-256.7	-50.4	258.4	11.73	11.56	2.50
9,785.0	56.50	186.40	9,684.6	-282.0	-53.0	283.7	9.10	8.71	3.23
9,817.0	59.00	188.00	9,701.7	-308.8	-56.4	310.7	8.88	7.81	5.00
9,849.0	61.30	188.00	9,717.6	-336.3	-60.3	338.3	7.19	7.19	0.00
9,881.0	64.00	187.70	9,732.3	-364.5	-64.2	366.6	8.48	8.44	-0.94
9,912.0	66.70	187.70	9,745.3	-392.4	-67.9	394.6	8.71	8.71	0.00
9,944.0	69.70	187.50	9,757.1	-421.8	-71.9	424.2	9.39	9.38	-0.63
9,975.0	71.40	187.80	9,767.5	-450.8	-75.8	453.3	5.56	5.48	0.97
10,007.0	73.00	188.30	9,777.2	-481.0	-80.0	483.6	5.22	5.00	1.56
10,039.0	75.80	188.00	9,785.8	-511.5	-84.4	514.2	8.80	8.75	-0.94
10,071.0	78.10	186.60	9,793.1	-542.4	-88.4	545.3	8.36	7.19	-4.38
10,100.3	80.11	184.77	9,798.6	-571.0	-91.2	574.0	9.22	6.87	-6.25
LP Salado Draw 9 A3CN Fed Com #1H									
10,103.0	80.30	184.60	9,799.1	-573.7	-91.4	576.6	9.22	6.89	-6.21
10,134.0	83.20	182.80	9,803.5	-604.3	-93.4	607.3	10.98	9.35	-5.81
10,170.0	88.30	181.70	9,806.2	-640.1	-94.8	643.2	14.49	14.17	-3.06
10,202.0	89.00	181.50	9,806.9	-672.1	-95.7	675.2	2.27	2.19	-0.63
10,233.0	89.20	181.80	9,807.4	-703.1	-96.6	706.2	1.16	0.65	0.97
10,265.0	89.90	181.40	9,807.7	-735.1	-97.5	738.2	2.52	2.19	-1.25
10,297.0	90.20	181.30	9,807.6	-767.1	-98.2	770.2	0.99	0.94	-0.31
10,328.0	90.50	181.40	9,807.5	-798.1	-99.0	801.2	1.02	0.97	0.32
10,360.0	90.80	181.50	9,807.1	-830.1	-99.8	833.2	0.99	0.94	0.31
10,392.0	90.90	181.90	9,806.6	-862.0	-100.7	865.2	1.29	0.31	1.25
10,424.0	90.90	182.00	9,806.1	-894.0	-101.8	897.2	0.31	0.00	0.31



# Stryker Directional Survey Report



<b>Company:</b>	Mewbourne Oil Company .	<b>Local Co-ordinate Reference:</b>	Well Salado Draw 9 A3CN Fed Com #1H
<b>Project:</b>	Lea County N.M.	<b>TVD Reference:</b>	3308 + 20 @ 3328.0usft (Patterson 36)
<b>Site:</b>	Section 9-26S-33E Salado Draw 9 A3CN Fed Com #1H	<b>MD Reference:</b>	3308 + 20 @ 3328.0usft (Patterson 36)
<b>Well:</b>	Salado Draw 9 A3CN Fed Com #1H	<b>North Reference:</b>	Grid
<b>Wellbore:</b>	Original Hole	<b>Survey Calculation Method:</b>	Minimum Curvature
<b>Design:</b>	Original Hole	<b>Database:</b>	Stryker_EDM

## Survey

Measured Depth (usft)	Inclination (°)	Azimuth (°)	Vertical Depth (usft)	+N/-S (usft)	+E/-W (usft)	Vertical Section (usft)	Dogleg Rate (°/100usft)	Build Rate (°/100usft)	Turn Rate (°/100usft)
10,456.0	91.10	182.00	9,805.6	-926.0	-102.9	929.2	0.63	0.63	0.00
10,519.0	90.00	182.30	9,805.0	-988.9	-105.3	992.2	1.81	-1.75	0.48
10,582.0	90.10	182.50	9,804.9	-1,051.9	-107.9	1,055.1	0.35	0.16	0.32
10,645.0	90.90	182.00	9,804.3	-1,114.8	-110.4	1,118.1	1.50	1.27	-0.79
10,709.0	88.80	181.80	9,804.5	-1,178.8	-112.5	1,182.1	3.30	-3.28	-0.31
10,772.0	88.60	181.40	9,805.9	-1,241.8	-114.3	1,245.1	0.71	-0.32	-0.63
10,836.0	88.90	181.50	9,807.3	-1,305.7	-115.9	1,309.1	0.49	0.47	0.16
10,899.0	89.90	181.40	9,808.0	-1,368.7	-117.5	1,372.1	1.60	1.59	-0.16
10,963.0	91.20	181.90	9,807.4	-1,432.7	-119.3	1,436.1	2.18	2.03	0.78
11,027.0	90.50	182.00	9,806.4	-1,496.6	-121.5	1,500.1	1.10	-1.09	0.16
11,091.0	90.70	182.00	9,805.8	-1,560.6	-123.8	1,564.1	0.31	0.31	0.00
11,154.0	87.90	179.70	9,806.5	-1,623.6	-124.7	1,627.0	5.75	-4.44	-3.65
11,218.0	88.70	179.20	9,808.4	-1,687.5	-124.1	1,690.9	1.47	1.25	-0.78
11,281.0	89.60	179.70	9,809.4	-1,750.5	-123.5	1,753.9	1.63	1.43	0.79
11,345.0	90.10	178.80	9,809.5	-1,814.5	-122.6	1,817.8	1.61	0.78	-1.41
11,408.0	89.40	179.60	9,809.8	-1,877.5	-121.8	1,880.7	1.69	-1.11	1.27
11,472.0	89.40	179.70	9,810.5	-1,941.5	-121.4	1,944.6	0.16	0.00	0.16
11,535.0	90.10	179.60	9,810.8	-2,004.5	-121.0	2,007.6	1.12	1.11	-0.16
11,599.0	90.30	179.10	9,810.5	-2,068.5	-120.2	2,071.5	0.84	0.31	-0.78
11,662.0	89.60	179.80	9,810.6	-2,131.5	-119.6	2,134.4	1.57	-1.11	1.11
11,725.0	90.00	180.00	9,810.8	-2,194.5	-119.5	2,197.4	0.71	0.63	0.32
11,789.0	88.30	180.60	9,811.8	-2,258.5	-119.9	2,261.4	2.82	-2.66	0.94
11,852.0	88.20	180.10	9,813.7	-2,321.4	-120.3	2,324.3	0.81	-0.16	-0.79
11,916.0	88.90	179.60	9,815.3	-2,385.4	-120.1	2,388.2	1.34	1.09	-0.78
11,979.0	88.70	180.10	9,816.6	-2,448.4	-119.9	2,451.2	0.85	-0.32	0.79
12,043.0	87.00	181.30	9,819.0	-2,512.4	-120.7	2,515.1	3.25	-2.66	1.88
12,106.0	87.30	182.40	9,822.2	-2,575.2	-122.7	2,578.0	1.81	0.48	1.75
12,170.0	87.80	183.00	9,824.9	-2,639.1	-125.7	2,642.0	1.22	0.78	0.94
12,202.0	88.60	183.70	9,825.9	-2,671.0	-127.6	2,673.9	3.32	2.50	2.19
12,233.0	88.40	183.70	9,826.7	-2,702.0	-129.6	2,704.9	0.65	-0.65	0.00
12,265.0	88.30	183.40	9,827.6	-2,733.9	-131.6	2,736.9	0.99	-0.31	-0.94
12,297.0	88.60	183.50	9,828.5	-2,765.8	-133.5	2,768.9	0.99	0.94	0.31
12,329.0	88.60	182.90	9,829.3	-2,797.8	-135.3	2,800.8	1.87	0.00	-1.88
12,360.0	89.10	182.20	9,829.9	-2,828.7	-136.7	2,831.8	2.77	1.61	-2.26
12,392.0	89.90	181.40	9,830.2	-2,860.7	-137.7	2,863.8	3.54	2.50	-2.50
12,423.0	90.10	181.30	9,830.2	-2,891.7	-138.4	2,894.8	0.72	0.65	-0.32
12,455.0	89.90	180.90	9,830.2	-2,923.7	-139.0	2,926.8	1.40	-0.63	-1.25
12,487.0	90.60	180.90	9,830.0	-2,955.7	-139.5	2,958.8	2.19	2.19	0.00
12,518.0	91.30	180.40	9,829.5	-2,986.7	-139.9	2,989.8	2.77	2.26	-1.61
12,582.0	91.40	179.70	9,828.0	-3,050.7	-139.9	3,053.7	1.10	0.16	-1.09
12,645.0	90.30	180.50	9,827.1	-3,113.7	-140.1	3,116.7	2.16	-1.75	1.27
12,709.0	90.10	180.60	9,826.9	-3,177.7	-140.7	3,180.7	0.35	-0.31	0.16



## Stryker Directional Survey Report



<b>Company:</b>	Mewbourne Oil Company .	<b>Local Co-ordinate Reference:</b>	Well Salado Draw 9 A3CN Fed Com #1H
<b>Project:</b>	Lea County N.M.	<b>TVD Reference:</b>	3308 + 20 @ 3328.0usft (Patterson 36)
<b>Site:</b>	Section 9-26S-33E Salado Draw 9 A3CN Fed Com #1H	<b>MD Reference:</b>	3308 + 20 @ 3328.0usft (Patterson 36)
<b>Well:</b>	Salado Draw 9 A3CN Fed Com #1H	<b>North Reference:</b>	Grid
<b>Wellbore:</b>	Original Hole	<b>Survey Calculation Method:</b>	Minimum Curvature
<b>Design:</b>	Original Hole	<b>Database:</b>	Stryker_EDM

### Survey

Measured Depth (usft)	Inclination (°)	Azimuth (°)	Vertical Depth (usft)	+N/-S (usft)	+E/-W (usft)	Vertical Section (usft)	Dogleg Rate (°/100usft)	Build Rate (°/100usft)	Turn Rate (°/100usft)
12,773.0	89.70	180.20	9,827.0	-3,241.6	-141.1	3,244.6	0.88	-0.63	-0.63
12,836.0	89.30	179.90	9,827.5	-3,304.6	-141.2	3,307.6	0.79	-0.63	-0.48
12,900.0	91.30	181.30	9,827.2	-3,368.6	-141.8	3,371.6	3.81	3.13	2.19
12,963.0	92.30	181.60	9,825.2	-3,431.6	-143.4	3,434.5	1.66	1.59	0.48
13,027.0	92.40	180.80	9,822.6	-3,495.5	-144.8	3,498.5	1.26	0.16	-1.25
13,090.0	92.40	181.80	9,819.9	-3,558.4	-146.2	3,561.4	1.59	0.00	1.59
13,154.0	91.30	182.70	9,817.9	-3,622.4	-148.7	3,625.4	2.22	-1.72	1.41
13,217.0	90.10	181.30	9,817.1	-3,685.3	-150.9	3,688.4	2.93	-1.90	-2.22
13,281.0	90.70	180.20	9,816.7	-3,749.3	-151.7	3,752.4	1.96	0.94	-1.72
13,344.0	89.20	180.40	9,816.7	-3,812.3	-152.1	3,815.3	2.40	-2.38	0.32
13,408.0	88.90	180.30	9,817.8	-3,876.3	-152.5	3,879.3	0.49	-0.47	-0.16
13,462.0	88.60	179.40	9,819.0	-3,930.3	-152.3	3,933.2	1.76	-0.56	-1.67
13,526.0	89.30	180.10	9,820.1	-3,994.3	-152.0	3,997.2	1.55	1.09	1.09
13,589.0	89.90	182.30	9,820.6	-4,057.2	-153.4	4,060.1	3.62	0.95	3.49
13,653.0	88.80	182.10	9,821.3	-4,121.2	-155.8	4,124.1	1.75	-1.72	-0.31
13,716.0	89.70	181.80	9,822.1	-4,184.2	-158.0	4,187.1	1.51	1.43	-0.48
13,779.0	90.20	181.70	9,822.2	-4,247.1	-159.9	4,250.1	0.81	0.79	-0.16
13,843.0	87.50	181.60	9,823.5	-4,311.1	-161.7	4,314.1	4.22	-4.22	-0.16
13,906.0	88.60	182.00	9,825.6	-4,374.0	-163.7	4,377.1	1.86	1.75	0.63
13,970.0	89.80	182.00	9,826.5	-4,438.0	-165.9	4,441.1	1.88	1.88	0.00
14,034.0	89.90	181.80	9,826.7	-4,501.9	-168.1	4,505.1	0.35	0.16	-0.31
14,097.0	90.40	181.30	9,826.5	-4,564.9	-169.8	4,568.1	1.12	0.79	-0.79
14,124.0	90.60	181.30	9,826.3	-4,591.9	-170.4	4,595.1	0.74	0.74	0.00
14,170.0	90.60	181.30	9,825.8	-4,637.9	-171.4	4,641.0	0.00	0.00	0.00
14170' MD Projected to Bit - PBHL Salado Draw 9 A3CN Fed Com #1H									

### Design Annotations

Measured Depth (usft)	Vertical Depth (usft)	Local Coordinates		Comment
		+N/-S (usft)	+E/-W (usft)	
9,060.0	9,058.9	10.9	-18.4	9060' MD MS Tie-In
14,170.0	9,825.8	-4,637.9	-171.4	14170' MD Projected to Bit





# **Mewbourne Oil Company .**

**Lea County N.M.**

**Section 9-26S-33E Salado Draw 9 A3CN Fed Com #1H**

**Salado Draw 9 A3CN Fed Com #1H**

**Original Hole**

**Design: Original Hole**

## **Survey Report - Geographic**

**20 April, 2015**





# Stryker Directional Survey Report - Geographic



<b>Company:</b>	Mewbourne Oil Company	<b>Local Co-ordinate Reference:</b>	Well Salado Draw 9 A3CN Fed Com #1H
<b>Project:</b>	Lea County N.M.	<b>TVD Reference:</b>	3308 + 20 @ 3328.0usft (Patterson 36)
<b>Site:</b>	Section 9-26S-33E Salado Draw 9 A3CN Fed Com #1H	<b>MD Reference:</b>	3308 + 20 @ 3328.0usft (Patterson 36)
<b>Well:</b>	Salado Draw 9 A3CN Fed Com #1H	<b>North Reference:</b>	Grid
<b>Wellbore:</b>	Original Hole	<b>Survey Calculation Method:</b>	Minimum Curvature
<b>Design:</b>	Original Hole	<b>Database:</b>	Stryker_EDM

<b>Project</b>	Lea County N.M.		
<b>Map System:</b>	US State Plane 1927 (Exact solution)	<b>System Datum:</b>	Mean Sea Level
<b>Geo Datum:</b>	NAD 1927 (NADCON CONUS)		
<b>Map Zone:</b>	New Mexico East 3001		

Site		Section 9-26S-33E Salado Draw 9 A3CN Fed Com #1H			
Site Position:		Northing:	387,941.30 usft	Latitude:	32° 3' 51.528 N
From:	Map	Easting:	734,081.30 usft	Longitude:	103° 34' 39.724 W
Position Uncertainty:	0.0 usft	Slot Radius:	13-3/16 "	Grid Convergence:	0.40 °

Well	Salado Draw 9 A3CN Fed Com #1H					
Well Position	+N/-S	0.0 usft	Northing:	387,941.30 usft	Latitude:	32° 3' 51.528 N
	+E/-W	0.0 usft	Easting:	734,081.30 usft	Longitude:	103° 34' 39.724 W
Position Uncertainty	0.0 usft	Wellhead Elevation:	0.0 usft	Ground Level:	3,308.0 usft	

<b>Wellbore</b>	Original Hole				
-----------------	---------------	--	--	--	--

Magnetics	Model Name	Sample Date	Declination (°)	Dip Angle (°)	Field Strength (nT)
	IGRF2015	3/16/2015	7.19	59.94	48,075

<b>Design</b>	Original Hole				
---------------	---------------	--	--	--	--

<b>Audit Notes:</b>					
<b>Version:</b>	1.0	<b>Phase:</b>	ACTUAL	<b>Tie On Depth:</b>	0.0

Vertical Section:	Depth From (TVD) (usft)	+N/-S (usft)	+E/-W (usft)	Direction (°)
	0.0	0.0	0.0	182.11

<b>Survey Program</b>	Date 4/20/2015				
From (usft)	To (usft)	Survey (Wellbore)	Tool Name	Description	
100.0	9,060.0	Survey #3 (Original Hole)			
9,120.0	14,170.0	Survey #1 (Original Hole)	MWD	MWD v3:standard declination	

Survey									
Measured Depth (usft)	Inclination (°)	Azimuth (°)	Vertical Depth (usft)	+N/-S (usft)	+E/-W (usft)	Map Northing (usft)	Map Easting (usft)	Latitude	Longitude
0.0	0.00	0.00	0.0	0.0	0.0	387,941.30	734,081.30	32° 3' 51.528 N	103° 34' 39.724 W
100.0	0.83	123.33	100.0	-0.4	0.6	387,940.90	734,081.90	32° 3' 51.524 N	103° 34' 39.717 W
200.0	0.81	123.39	200.0	-1.2	1.8	387,940.11	734,083.10	32° 3' 51.516 N	103° 34' 39.703 W
300.0	0.65	120.38	300.0	-1.9	2.9	387,939.44	734,084.18	32° 3' 51.509 N	103° 34' 39.691 W
400.0	0.37	89.69	400.0	-2.1	3.7	387,939.15	734,084.99	32° 3' 51.506 N	103° 34' 39.681 W
500.0	0.45	4.87	500.0	-1.8	4.0	387,939.55	734,085.34	32° 3' 51.510 N	103° 34' 39.677 W
600.0	1.34	341.54	600.0	-0.3	3.7	387,941.05	734,085.01	32° 3' 51.525 N	103° 34' 39.681 W
700.0	1.96	338.65	699.9	2.4	2.7	387,943.75	734,084.02	32° 3' 51.552 N	103° 34' 39.692 W
800.0	1.90	335.03	799.9	5.5	1.4	387,946.84	734,082.69	32° 3' 51.582 N	103° 34' 39.707 W
900.0	2.03	340.98	899.8	8.7	0.1	387,950.02	734,081.42	32° 3' 51.614 N	103° 34' 39.722 W



# Stryker Directional Survey Report - Geographic



<b>Company:</b>	Mewbourne Oil Company	<b>Local Co-ordinate Reference:</b>	Well Salado Draw 9 A3CN Fed Com #1H
<b>Project:</b>	Lea County N.M.	<b>TVD Reference:</b>	3308 + 20 @ 3328.0usft (Patterson 36)
<b>Site:</b>	Section 9-26S-33E Salado Draw 9 A3CN Fed Com #1H	<b>MD Reference:</b>	3308 + 20 @ 3328.0usft (Patterson 36)
<b>Well:</b>	Salado Draw 9 A3CN Fed Com #1H	<b>North Reference:</b>	Grid
<b>Wellbore:</b>	Original Hole	<b>Survey Calculation Method:</b>	Minimum Curvature
<b>Design:</b>	Original Hole	<b>Database:</b>	Stryker_EDM

## Survey

Measured Depth (usft)	Inclination (°)	Azimuth (°)	Vertical Depth (usft)	+N/-S (usft)	+E/-W (usft)	Map Northing (usft)	Map Easting (usft)	Latitude	Longitude
1,000.0	1.88	337.95	999.7	11.9	-1.1	387,953.22	734,080.22	32° 3' 51.646 N	103° 34' 39.736 W
1,100.0	0.93	279.41	1,099.7	13.6	-2.5	387,954.87	734,078.81	32° 3' 51.662 N	103° 34' 39.752 W
1,200.0	1.10	171.93	1,199.7	12.8	-3.2	387,954.05	734,078.14	32° 3' 51.654 N	103° 34' 39.760 W
1,300.0	1.22	110.03	1,299.7	11.4	-2.0	387,952.74	734,079.28	32° 3' 51.641 N	103° 34' 39.747 W
1,400.0	1.13	31.98	1,399.7	11.9	-0.5	387,953.21	734,080.80	32° 3' 51.646 N	103° 34' 39.729 W
1,500.0	0.96	292.13	1,499.7	13.1	-0.8	387,954.36	734,080.54	32° 3' 51.657 N	103° 34' 39.732 W
1,600.0	1.30	206.86	1,599.7	12.4	-2.0	387,953.66	734,079.26	32° 3' 51.650 N	103° 34' 39.747 W
1,700.0	1.31	145.01	1,699.6	10.4	-1.9	387,951.71	734,079.40	32° 3' 51.631 N	103° 34' 39.745 W
1,800.0	1.23	62.13	1,799.6	10.0	-0.3	387,951.28	734,081.00	32° 3' 51.626 N	103° 34' 39.727 W
1,900.0	0.97	339.78	1,899.6	11.3	0.4	387,952.58	734,081.66	32° 3' 51.639 N	103° 34' 39.719 W
2,000.0	1.08	248.35	1,999.6	11.7	-0.8	387,953.02	734,080.49	32° 3' 51.644 N	103° 34' 39.733 W
2,100.0	1.36	177.70	2,099.6	10.2	-1.6	387,951.49	734,079.66	32° 3' 51.629 N	103° 34' 39.742 W
2,200.0	1.24	102.87	2,199.6	8.8	-0.5	387,950.06	734,080.76	32° 3' 51.614 N	103° 34' 39.730 W
2,300.0	1.52	44.11	2,299.5	9.5	1.4	387,950.77	734,082.74	32° 3' 51.621 N	103° 34' 39.707 W
2,400.0	1.43	12.46	2,399.5	11.6	2.6	387,952.94	734,083.94	32° 3' 51.643 N	103° 34' 39.692 W
2,500.0	1.01	325.44	2,499.5	13.6	2.4	387,954.89	734,083.70	32° 3' 51.662 N	103° 34' 39.695 W
2,600.0	0.84	266.82	2,599.5	14.3	1.2	387,955.57	734,082.47	32° 3' 51.669 N	103° 34' 39.709 W
2,700.0	1.06	191.69	2,699.5	13.3	0.3	387,954.63	734,081.55	32° 3' 51.660 N	103° 34' 39.720 W
2,800.0	0.97	96.12	2,799.4	12.3	0.9	387,953.63	734,082.21	32° 3' 51.650 N	103° 34' 39.713 W
2,900.0	1.36	21.41	2,899.4	13.3	2.2	387,954.65	734,083.48	32° 3' 51.660 N	103° 34' 39.698 W
3,000.0	1.22	338.23	2,999.4	15.4	2.2	387,956.74	734,083.52	32° 3' 51.680 N	103° 34' 39.697 W
3,100.0	1.06	283.61	3,099.4	16.6	0.9	387,957.95	734,082.23	32° 3' 51.692 N	103° 34' 39.712 W
3,200.0	0.57	181.62	3,199.4	16.4	0.0	387,957.67	734,081.31	32° 3' 51.690 N	103° 34' 39.723 W
3,300.0	1.04	72.93	3,299.4	16.1	0.9	387,957.44	734,082.17	32° 3' 51.687 N	103° 34' 39.713 W
3,400.0	1.24	1.34	3,399.4	17.5	1.8	387,958.78	734,083.06	32° 3' 51.701 N	103° 34' 39.702 W
3,500.0	1.35	290.22	3,499.3	19.0	0.7	387,960.27	734,081.98	32° 3' 51.715 N	103° 34' 39.715 W
3,600.0	1.04	238.15	3,599.3	18.9	-1.2	387,960.20	734,080.10	32° 3' 51.715 N	103° 34' 39.736 W
3,700.0	0.71	126.62	3,699.3	18.1	-1.5	387,959.35	734,079.83	32° 3' 51.706 N	103° 34' 39.740 W
3,800.0	0.65	40.84	3,799.3	18.1	-0.6	387,959.41	734,080.70	32° 3' 51.707 N	103° 34' 39.730 W
3,900.0	1.32	307.19	3,899.3	19.2	-1.1	387,960.54	734,080.15	32° 3' 51.718 N	103° 34' 39.736 W
4,000.0	1.55	226.67	3,999.3	19.0	-3.0	387,960.31	734,078.25	32° 3' 51.716 N	103° 34' 39.758 W
4,100.0	1.38	165.59	4,099.2	16.9	-3.7	387,958.21	734,077.57	32° 3' 51.695 N	103° 34' 39.766 W
4,200.0	1.02	95.77	4,199.2	15.7	-2.5	387,956.96	734,078.75	32° 3' 51.683 N	103° 34' 39.752 W
4,300.0	1.13	33.16	4,299.2	16.4	-1.1	387,957.69	734,080.18	32° 3' 51.690 N	103° 34' 39.736 W
4,400.0	1.27	338.85	4,399.2	18.3	-1.0	387,959.55	734,080.32	32° 3' 51.708 N	103° 34' 39.734 W
4,500.0	0.63	272.43	4,499.2	19.3	-1.9	387,960.61	734,079.37	32° 3' 51.719 N	103° 34' 39.745 W
4,600.0	0.88	112.48	4,599.2	19.0	-1.8	387,960.34	734,079.53	32° 3' 51.716 N	103° 34' 39.743 W
4,700.0	0.83	78.96	4,699.2	18.9	-0.3	387,960.18	734,080.95	32° 3' 51.715 N	103° 34' 39.727 W
4,800.0	1.03	350.67	4,799.2	19.9	0.2	387,961.21	734,081.51	32° 3' 51.725 N	103° 34' 39.720 W
4,900.0	1.02	259.90	4,899.2	20.6	-0.8	387,961.94	734,080.49	32° 3' 51.732 N	103° 34' 39.732 W
5,000.0	1.20	223.59	4,999.1	19.7	-2.4	387,961.02	734,078.89	32° 3' 51.723 N	103° 34' 39.750 W
5,100.0	1.48	222.98	5,099.1	18.0	-4.0	387,959.32	734,077.29	32° 3' 51.706 N	103° 34' 39.769 W
5,200.0	1.16	215.69	5,199.1	16.3	-5.5	387,957.55	734,075.82	32° 3' 51.689 N	103° 34' 39.786 W
5,300.0	1.08	245.14	5,299.1	15.0	-6.9	387,956.34	734,074.37	32° 3' 51.677 N	103° 34' 39.803 W
5,400.0	0.69	235.83	5,399.1	14.3	-8.3	387,955.60	734,073.02	32° 3' 51.670 N	103° 34' 39.819 W
5,500.0	0.71	273.05	5,499.0	14.0	-9.4	387,955.30	734,071.90	32° 3' 51.667 N	103° 34' 39.832 W
5,600.0	0.43	247.65	5,599.0	13.9	-10.4	387,955.19	734,070.94	32° 3' 51.666 N	103° 34' 39.843 W
5,700.0	0.66	267.34	5,699.0	13.7	-11.3	387,955.02	734,070.01	32° 3' 51.664 N	103° 34' 39.854 W
5,800.0	0.37	273.45	5,799.0	13.7	-12.2	387,955.01	734,069.12	32° 3' 51.664 N	103° 34' 39.865 W
5,900.0	0.68	296.95	5,899.0	14.0	-13.0	387,955.30	734,068.27	32° 3' 51.667 N	103° 34' 39.874 W
6,000.0	0.50	269.25	5,999.0	14.3	-14.0	387,955.56	734,067.30	32° 3' 51.670 N	103° 34' 39.886 W
6,100.0	0.51	326.58	6,099.0	14.6	-14.7	387,955.93	734,066.62	32° 3' 51.673 N	103° 34' 39.893 W
6,200.0	0.55	287.03	6,199.0	15.1	-15.4	387,956.44	734,065.92	32° 3' 51.679 N	103° 34' 39.902 W
6,300.0	0.59	333.15	6,299.0	15.7	-16.1	387,957.04	734,065.22	32° 3' 51.685 N	103° 34' 39.910 W





# Stryker Directional Survey Report - Geographic



<b>Company:</b>	Mewbourne Oil Company .	<b>Local Co-ordinate Reference:</b>	Well Salado Draw 9 A3CN Fed Com #1H
<b>Project:</b>	Lea County N.M.	<b>TVD Reference:</b>	3308 + 20 @ 3328.0usft (Patterson 36)
<b>Site:</b>	Section 9-26S-33E Salado Draw 9 A3CN Fed Com #1H	<b>MD Reference:</b>	3308 + 20 @ 3328.0usft (Patterson 36)
<b>Well:</b>	Salado Draw 9 A3CN Fed Com #1H	<b>North Reference:</b>	Grid
<b>Wellbore:</b>	Original Hole	<b>Survey Calculation Method:</b>	Minimum Curvature
<b>Design:</b>	Original Hole	<b>Database:</b>	Stryker_EDM

## Survey

Measured Depth (usft)	Inclination (°)	Azimuth (°)	Vertical Depth (usft)	+N/-S (usft)	+E/-W (usft)	Map Northing (usft)	Map Easting (usft)	Latitude	Longitude
6,400.0	0.25	309.98	6,399.0	16.3	-16.5	387,957.64	734,064.82	32° 3' 51.691 N	103° 34' 39.914 W
6,500.0	0.63	319.34	6,499.0	16.9	-17.0	387,958.20	734,064.30	32° 3' 51.696 N	103° 34' 39.920 W
6,600.0	0.42	348.12	6,599.0	17.7	-17.4	387,958.97	734,063.86	32° 3' 51.704 N	103° 34' 39.925 W
6,700.0	0.62	316.69	6,699.0	18.4	-17.9	387,959.72	734,063.42	32° 3' 51.711 N	103° 34' 39.930 W
6,800.0	0.50	358.27	6,799.0	19.3	-18.3	387,960.55	734,063.03	32° 3' 51.719 N	103° 34' 39.935 W
6,900.0	0.28	290.05	6,899.0	19.8	-18.5	387,961.07	734,062.79	32° 3' 51.725 N	103° 34' 39.938 W
7,000.0	0.22	11.62	6,999.0	20.0	-18.7	387,961.34	734,062.60	32° 3' 51.727 N	103° 34' 39.940 W
7,100.0	0.10	12.05	7,099.0	20.3	-18.6	387,961.62	734,062.66	32° 3' 51.730 N	103° 34' 39.939 W
7,200.0	0.25	202.38	7,199.0	20.2	-18.7	387,961.50	734,062.59	32° 3' 51.729 N	103° 34' 39.940 W
7,300.0	0.14	10.18	7,299.0	20.1	-18.8	387,961.42	734,062.53	32° 3' 51.728 N	103° 34' 39.941 W
7,400.0	0.50	172.71	7,399.0	19.8	-18.7	387,961.11	734,062.61	32° 3' 51.725 N	103° 34' 39.940 W
7,500.0	0.20	136.53	7,499.0	19.2	-18.5	387,960.55	734,062.78	32° 3' 51.719 N	103° 34' 39.938 W
7,600.0	0.36	200.97	7,599.0	18.8	-18.5	387,960.13	734,062.79	32° 3' 51.715 N	103° 34' 39.938 W
7,700.0	0.33	177.47	7,699.0	18.2	-18.6	387,959.55	734,062.69	32° 3' 51.710 N	103° 34' 39.939 W
7,800.0	0.31	140.68	7,799.0	17.8	-18.4	387,959.05	734,062.88	32° 3' 51.705 N	103° 34' 39.937 W
7,900.0	0.06	175.58	7,899.0	17.5	-18.2	387,958.79	734,063.05	32° 3' 51.702 N	103° 34' 39.935 W
8,000.0	0.33	196.88	7,999.0	17.2	-18.3	387,958.46	734,062.97	32° 3' 51.699 N	103° 34' 39.936 W
8,100.0	0.52	145.92	8,099.0	16.5	-18.2	387,957.81	734,063.14	32° 3' 51.692 N	103° 34' 39.934 W
8,200.0	0.61	136.99	8,199.0	15.7	-17.5	387,957.04	734,063.76	32° 3' 51.685 N	103° 34' 39.927 W
8,300.0	0.46	137.00	8,299.0	15.1	-16.9	387,956.36	734,064.40	32° 3' 51.678 N	103° 34' 39.919 W
8,400.0	0.43	154.01	8,399.0	14.4	-16.5	387,955.73	734,064.83	32° 3' 51.672 N	103° 34' 39.914 W
8,500.0	0.53	166.48	8,499.0	13.6	-16.2	387,954.94	734,065.11	32° 3' 51.664 N	103° 34' 39.911 W
8,600.0	0.42	187.62	8,599.0	12.8	-16.1	387,954.13	734,065.17	32° 3' 51.656 N	103° 34' 39.910 W
8,700.0	0.42	202.52	8,699.0	12.1	-16.3	387,953.43	734,064.98	32° 3' 51.649 N	103° 34' 39.913 W
8,800.0	0.45	201.39	8,799.0	11.4	-16.6	387,952.72	734,064.69	32° 3' 51.642 N	103° 34' 39.916 W
8,900.0	0.36	235.88	8,898.9	10.9	-17.0	387,952.18	734,064.29	32° 3' 51.637 N	103° 34' 39.921 W
9,000.0	0.64	283.07	8,998.9	10.8	-17.8	387,952.13	734,063.49	32° 3' 51.636 N	103° 34' 39.930 W
9,060.0	0.49	267.87	9,058.9	10.9	-18.4	387,952.20	734,062.90	32° 3' 51.637 N	103° 34' 39.937 W
<b>9060' MD MS Tie-In</b>									
9,120.0	0.50	266.20	9,118.9	10.9	-18.9	387,952.17	734,062.39	32° 3' 51.637 N	103° 34' 39.943 W
9,151.0	2.30	200.70	9,149.9	10.3	-19.3	387,951.58	734,062.03	32° 3' 51.631 N	103° 34' 39.947 W
9,183.0	4.70	198.80	9,181.9	8.4	-19.9	387,949.74	734,061.38	32° 3' 51.613 N	103° 34' 39.955 W
9,215.0	6.20	204.80	9,213.7	5.6	-21.1	387,946.93	734,060.23	32° 3' 51.585 N	103° 34' 39.968 W
9,247.0	8.40	201.60	9,245.5	1.9	-22.6	387,943.19	734,058.65	32° 3' 51.548 N	103° 34' 39.987 W
9,278.0	11.60	199.00	9,276.0	-3.2	-24.5	387,938.13	734,056.80	32° 3' 51.498 N	103° 34' 40.009 W
9,310.0	14.90	197.00	9,307.1	-10.1	-26.7	387,931.16	734,054.55	32° 3' 51.429 N	103° 34' 40.036 W
9,342.0	18.50	194.70	9,337.8	-19.0	-29.2	387,922.31	734,052.06	32° 3' 51.342 N	103° 34' 40.065 W
9,369.0	21.30	188.90	9,363.2	-28.0	-31.1	387,913.32	734,050.21	32° 3' 51.253 N	103° 34' 40.088 W
9,403.0	24.00	184.20	9,394.5	-41.0	-32.5	387,900.32	734,048.75	32° 3' 51.124 N	103° 34' 40.106 W
9,437.0	27.30	183.30	9,425.2	-55.7	-33.5	387,885.63	734,047.79	32° 3' 50.979 N	103° 34' 40.118 W
9,469.0	31.60	183.80	9,453.0	-71.4	-34.5	387,869.93	734,046.81	32° 3' 50.824 N	103° 34' 40.131 W
9,500.0	34.50	184.40	9,479.0	-88.2	-35.7	387,853.07	734,045.60	32° 3' 50.657 N	103° 34' 40.146 W
9,531.0	35.60	186.30	9,504.4	-105.9	-37.4	387,835.35	734,043.94	32° 3' 50.482 N	103° 34' 40.167 W
9,563.0	36.90	186.50	9,530.2	-124.8	-39.5	387,816.55	734,041.83	32° 3' 50.296 N	103° 34' 40.193 W
9,595.0	38.90	185.80	9,555.5	-144.3	-41.6	387,797.00	734,039.73	32° 3' 50.103 N	103° 34' 40.219 W
9,627.0	40.70	185.10	9,580.0	-164.7	-43.5	387,776.61	734,037.78	32° 3' 49.901 N	103° 34' 40.243 W
9,658.0	43.20	183.50	9,603.1	-185.3	-45.1	387,755.95	734,036.24	32° 3' 49.697 N	103° 34' 40.263 W
9,690.0	46.20	183.70	9,625.8	-207.8	-46.5	387,733.49	734,034.82	32° 3' 49.474 N	103° 34' 40.281 W
9,722.0	50.10	184.60	9,647.2	-231.6	-48.2	387,709.72	734,033.09	32° 3' 49.239 N	103° 34' 40.303 W
9,754.0	53.80	185.40	9,666.9	-256.7	-50.4	387,684.62	734,030.89	32° 3' 48.991 N	103° 34' 40.331 W
9,785.0	56.50	186.40	9,684.6	-282.0	-53.0	387,659.32	734,028.27	32° 3' 48.741 N	103° 34' 40.363 W
9,817.0	59.00	188.00	9,701.7	-308.8	-56.4	387,632.47	734,024.88	32° 3' 48.476 N	103° 34' 40.405 W
9,849.0	61.30	188.00	9,717.6	-336.3	-60.3	387,604.99	734,021.01	32° 3' 48.204 N	103° 34' 40.452 W
9,881.0	64.00	187.70	9,732.3	-364.5	-64.2	387,576.84	734,017.13	32° 3' 47.926 N	103° 34' 40.499 W





# Stryker Directional Survey Report - Geographic



<b>Company:</b>	Mewbourne Oil Company .	<b>Local Co-ordinate Reference:</b>	Well Salado Draw 9 A3CN Fed Com #1H
<b>Project:</b>	Lea County N.M.	<b>TVD Reference:</b>	3308 + 20 @ 3328.0usft (Patterson 36)
<b>Site:</b>	Section 9-26S-33E Salado Draw 9 A3CN Fed Com #1H	<b>MD Reference:</b>	3308 + 20 @ 3328.0usft (Patterson 36)
<b>Well:</b>	Salado Draw 9 A3CN Fed Com #1H	<b>North Reference:</b>	Grid
<b>Wellbore:</b>	Original Hole	<b>Survey Calculation Method:</b>	Minimum Curvature
<b>Design:</b>	Original Hole	<b>Database:</b>	Stryker_EDM

## Survey

Measured Depth (usft)	Inclination (°)	Azimuth (°)	Vertical Depth (usft)	+N/-S (usft)	+E/-W (usft)	Map Northing (usft)	Map Easting (usft)	Latitude	Longitude
9,912.0	66.70	187.70	9,745.3	-392.4	-67.9	387,548.92	734,013.36	32° 3' 47.649 N	103° 34' 40.545 W
9,944.0	69.70	187.50	9,757.1	-421.8	-71.9	387,519.47	734,009.43	32° 3' 47.358 N	103° 34' 40.593 W
9,975.0	71.40	187.80	9,767.5	-450.8	-75.8	387,490.50	734,005.54	32° 3' 47.072 N	103° 34' 40.641 W
10,007.0	73.00	188.30	9,777.2	-481.0	-80.0	387,460.34	734,001.27	32° 3' 46.774 N	103° 34' 40.693 W
10,039.0	75.80	188.00	9,785.8	-511.5	-84.4	387,429.83	733,996.90	32° 3' 46.472 N	103° 34' 40.746 W
10,071.0	78.10	186.60	9,793.1	-542.4	-88.4	387,398.91	733,992.94	32° 3' 46.166 N	103° 34' 40.795 W
10,100.3	80.11	184.77	9,798.6	-571.0	-91.2	387,370.29	733,990.10	32° 3' 45.883 N	103° 34' 40.830 W
LP Salado Draw 9 A3CN Fed Com #1H									
10,103.0	80.30	184.60	9,799.1	-573.7	-91.4	387,367.63	733,989.88	32° 3' 45.857 N	103° 34' 40.833 W
10,134.0	83.20	182.80	9,803.5	-604.3	-93.4	387,337.02	733,987.90	32° 3' 45.554 N	103° 34' 40.859 W
10,170.0	88.30	181.70	9,806.2	-640.1	-94.8	387,301.16	733,986.49	32° 3' 45.200 N	103° 34' 40.878 W
10,202.0	89.00	181.50	9,806.9	-672.1	-95.7	387,269.18	733,985.60	32° 3' 44.883 N	103° 34' 40.891 W
10,233.0	89.20	181.80	9,807.4	-703.1	-96.6	387,238.20	733,984.71	32° 3' 44.577 N	103° 34' 40.904 W
10,265.0	89.90	181.40	9,807.7	-735.1	-97.5	387,206.21	733,983.81	32° 3' 44.260 N	103° 34' 40.917 W
10,297.0	90.20	181.30	9,807.6	-767.1	-98.2	387,174.22	733,983.06	32° 3' 43.944 N	103° 34' 40.928 W
10,328.0	90.50	181.40	9,807.5	-798.1	-99.0	387,143.23	733,982.33	32° 3' 43.637 N	103° 34' 40.939 W
10,360.0	90.80	181.50	9,807.1	-830.1	-99.8	387,111.24	733,981.52	32° 3' 43.321 N	103° 34' 40.951 W
10,392.0	90.90	181.90	9,806.6	-862.0	-100.7	387,079.26	733,980.57	32° 3' 43.004 N	103° 34' 40.965 W
10,424.0	90.90	182.00	9,806.1	-894.0	-101.8	387,047.28	733,979.48	32° 3' 42.688 N	103° 34' 40.980 W
10,456.0	91.10	182.00	9,805.6	-926.0	-102.9	387,015.31	733,978.37	32° 3' 42.371 N	103° 34' 40.995 W
10,519.0	90.00	182.30	9,805.0	-988.9	-105.3	386,952.35	733,976.00	32° 3' 41.749 N	103° 34' 41.028 W
10,582.0	90.10	182.50	9,804.9	-1,051.9	-107.9	386,889.41	733,973.36	32° 3' 41.126 N	103° 34' 41.064 W
10,645.0	90.90	182.00	9,804.3	-1,114.8	-110.4	386,826.46	733,970.89	32° 3' 40.503 N	103° 34' 41.098 W
10,709.0	88.80	181.80	9,804.5	-1,178.8	-112.5	386,762.50	733,968.77	32° 3' 39.870 N	103° 34' 41.128 W
10,772.0	88.60	181.40	9,805.9	-1,241.8	-114.3	386,699.54	733,967.01	32° 3' 39.247 N	103° 34' 41.153 W
10,836.0	88.90	181.50	9,807.3	-1,305.7	-115.9	386,635.58	733,965.39	32° 3' 38.615 N	103° 34' 41.177 W
10,899.0	89.90	181.40	9,808.0	-1,368.7	-117.5	386,572.60	733,963.80	32° 3' 37.992 N	103° 34' 41.201 W
10,963.0	91.20	181.90	9,807.4	-1,432.7	-119.3	386,508.63	733,961.96	32° 3' 37.359 N	103° 34' 41.227 W
11,027.0	90.50	182.00	9,806.4	-1,496.6	-121.5	386,444.68	733,959.78	32° 3' 36.726 N	103° 34' 41.258 W
11,091.0	90.70	182.00	9,805.8	-1,560.6	-123.8	386,380.72	733,957.54	32° 3' 36.093 N	103° 34' 41.289 W
11,154.0	87.90	179.70	9,806.5	-1,623.6	-124.7	386,317.74	733,956.61	32° 3' 35.470 N	103° 34' 41.305 W
11,218.0	88.70	179.20	9,808.4	-1,687.5	-124.1	386,253.77	733,957.22	32° 3' 34.837 N	103° 34' 41.303 W
11,281.0	89.60	179.70	9,809.4	-1,750.5	-123.5	386,190.78	733,957.83	32° 3' 34.214 N	103° 34' 41.301 W
11,345.0	90.10	178.80	9,809.5	-1,814.5	-122.6	386,126.79	733,958.67	32° 3' 33.580 N	103° 34' 41.297 W
11,408.0	89.40	179.60	9,809.8	-1,877.5	-121.8	386,063.80	733,959.55	32° 3' 32.957 N	103° 34' 41.292 W
11,472.0	89.40	179.70	9,810.5	-1,941.5	-121.4	385,999.80	733,959.94	32° 3' 32.323 N	103° 34' 41.292 W
11,535.0	90.10	179.60	9,810.8	-2,004.5	-121.0	385,936.81	733,960.32	32° 3' 31.700 N	103° 34' 41.293 W
11,599.0	90.30	179.10	9,810.5	-2,068.5	-120.2	385,872.81	733,961.05	32° 3' 31.067 N	103° 34' 41.290 W
11,662.0	89.60	179.80	9,810.6	-2,131.5	-119.6	385,809.81	733,961.65	32° 3' 30.443 N	103° 34' 41.288 W
11,725.0	90.00	180.00	9,810.8	-2,194.5	-119.5	385,746.81	733,961.76	32° 3' 29.820 N	103° 34' 41.292 W
11,789.0	88.30	180.60	9,811.8	-2,258.5	-119.9	385,682.82	733,961.43	32° 3' 29.187 N	103° 34' 41.301 W
11,852.0	88.20	180.10	9,813.7	-2,321.4	-120.3	385,619.86	733,961.04	32° 3' 28.564 N	103° 34' 41.310 W
11,916.0	88.90	179.60	9,815.3	-2,385.4	-120.1	385,555.88	733,961.21	32° 3' 27.930 N	103° 34' 41.313 W
11,979.0	88.70	180.10	9,816.6	-2,448.4	-119.9	385,492.89	733,961.37	32° 3' 27.307 N	103° 34' 41.317 W
12,043.0	87.00	181.30	9,819.0	-2,512.4	-120.7	385,428.94	733,960.59	32° 3' 26.674 N	103° 34' 41.331 W
12,106.0	87.30	182.40	9,822.2	-2,575.2	-122.7	385,366.06	733,958.56	32° 3' 26.052 N	103° 34' 41.360 W
12,170.0	87.80	183.00	9,824.9	-2,639.1	-125.7	385,302.19	733,955.55	32° 3' 25.420 N	103° 34' 41.400 W
12,202.0	88.60	183.70	9,825.9	-2,671.0	-127.6	385,270.26	733,953.68	32° 3' 25.104 N	103° 34' 41.424 W
12,233.0	88.40	183.70	9,826.7	-2,702.0	-129.6	385,239.33	733,951.68	32° 3' 24.799 N	103° 34' 41.450 W
12,265.0	88.30	183.40	9,827.6	-2,733.9	-131.6	385,207.41	733,949.70	32° 3' 24.483 N	103° 34' 41.476 W
12,297.0	88.60	183.50	9,828.5	-2,765.8	-133.5	385,175.48	733,947.78	32° 3' 24.167 N	103° 34' 41.500 W
12,329.0	88.60	182.90	9,829.3	-2,797.8	-135.3	385,143.54	733,945.99	32° 3' 23.851 N	103° 34' 41.524 W
12,360.0	89.10	182.20	9,829.9	-2,828.7	-136.7	385,112.57	733,944.61	32° 3' 23.545 N	103° 34' 41.542 W
12,392.0	89.90	181.40	9,830.2	-2,860.7	-137.7	385,080.59	733,943.61	32° 3' 23.228 N	103° 34' 41.557 W



# Stryker Directional Survey Report - Geographic



<b>Company:</b>	Mewbourne Oil Company .	<b>Local Co-ordinate Reference:</b>	Well Salado Draw 9 A3CN Fed Com #1H
<b>Project:</b>	Lea County N.M.	<b>TVD Reference:</b>	3308 + 20 @ 3328.0usft (Patterson 36)
<b>Site:</b>	Section 9-26S-33E Salado Draw 9 A3CN Fed Com #1H	<b>MD Reference:</b>	3308 + 20 @ 3328.0usft (Patterson 36)
<b>Well:</b>	Salado Draw 9 A3CN Fed Com #1H	<b>North Reference:</b>	Grid
<b>Wellbore:</b>	Original Hole	<b>Survey Calculation Method:</b>	Minimum Curvature
<b>Design:</b>	Original Hole	<b>Database:</b>	Stryker_EDM

## Survey

Measured Depth (usft)	Inclination (°)	Azimuth (°)	Vertical Depth (usft)	+N/-S (usft)	+E/-W (usft)	Map Northing (usft)	Map Easting (usft)	Latitude	Longitude
12,423.0	90.10	181.30	9,830.2	-2,891.7	-138.4	385,049.60	733,942.88	32° 3' 22.922 N	103° 34' 41.568 W
12,455.0	89.90	180.90	9,830.2	-2,923.7	-139.0	385,017.61	733,942.26	32° 3' 22.605 N	103° 34' 41.577 W
12,487.0	90.60	180.90	9,830.0	-2,955.7	-139.5	384,985.61	733,941.76	32° 3' 22.289 N	103° 34' 41.586 W
12,518.0	91.30	180.40	9,829.5	-2,986.7	-139.9	384,954.62	733,941.41	32° 3' 21.982 N	103° 34' 41.592 W
12,582.0	91.40	179.70	9,828.0	-3,050.7	-139.9	384,890.64	733,941.35	32° 3' 21.349 N	103° 34' 41.598 W
12,645.0	90.30	180.50	9,827.1	-3,113.7	-140.1	384,827.64	733,941.24	32° 3' 20.725 N	103° 34' 41.605 W
12,709.0	90.10	180.60	9,826.9	-3,177.7	-140.7	384,763.65	733,940.63	32° 3' 20.092 N	103° 34' 41.617 W
12,773.0	89.70	180.20	9,827.0	-3,241.6	-141.1	384,699.65	733,940.18	32° 3' 19.459 N	103° 34' 41.627 W
12,836.0	89.30	179.90	9,827.5	-3,304.6	-141.2	384,636.65	733,940.13	32° 3' 18.835 N	103° 34' 41.633 W
12,900.0	91.30	181.30	9,827.2	-3,368.6	-141.8	384,572.66	733,939.46	32° 3' 18.202 N	103° 34' 41.646 W
12,963.0	92.30	181.60	9,825.2	-3,431.6	-143.4	384,509.71	733,937.86	32° 3' 17.579 N	103° 34' 41.670 W
13,027.0	92.40	180.80	9,822.6	-3,495.5	-144.8	384,445.78	733,936.52	32° 3' 16.947 N	103° 34' 41.691 W
13,090.0	92.40	181.80	9,819.9	-3,558.4	-146.2	384,382.85	733,935.09	32° 3' 16.324 N	103° 34' 41.712 W
13,154.0	91.30	182.70	9,817.9	-3,622.4	-148.7	384,318.94	733,932.58	32° 3' 15.692 N	103° 34' 41.747 W
13,217.0	90.10	181.30	9,817.1	-3,685.3	-150.9	384,255.98	733,930.39	32° 3' 15.069 N	103° 34' 41.777 W
13,281.0	90.70	180.20	9,816.7	-3,749.3	-151.7	384,191.99	733,929.55	32° 3' 14.436 N	103° 34' 41.792 W
13,344.0	89.20	180.40	9,816.7	-3,812.3	-152.1	384,128.99	733,929.22	32° 3' 13.812 N	103° 34' 41.801 W
13,408.0	88.90	180.30	9,817.8	-3,876.3	-152.5	384,065.00	733,928.83	32° 3' 13.179 N	103° 34' 41.811 W
13,462.0	88.60	179.40	9,819.0	-3,930.3	-152.3	384,011.02	733,928.97	32° 3' 12.645 N	103° 34' 41.814 W
13,526.0	89.30	180.10	9,820.1	-3,994.3	-152.0	383,947.03	733,929.25	32° 3' 12.012 N	103° 34' 41.816 W
13,589.0	89.90	182.30	9,820.6	-4,057.2	-153.4	383,884.05	733,927.93	32° 3' 11.389 N	103° 34' 41.836 W
13,653.0	88.80	182.10	9,821.3	-4,121.2	-155.8	383,820.10	733,925.47	32° 3' 10.756 N	103° 34' 41.870 W
13,716.0	89.70	181.80	9,822.1	-4,184.2	-158.0	383,757.14	733,923.33	32° 3' 10.133 N	103° 34' 41.900 W
13,779.0	90.20	181.70	9,822.2	-4,247.1	-159.9	383,694.17	733,921.40	32° 3' 9.510 N	103° 34' 41.927 W
13,843.0	87.50	181.60	9,823.5	-4,311.1	-161.7	383,630.22	733,919.56	32° 3' 8.877 N	103° 34' 41.954 W
13,906.0	88.60	182.00	9,825.6	-4,374.0	-163.7	383,567.29	733,917.58	32° 3' 8.255 N	103° 34' 41.982 W
13,970.0	89.80	182.00	9,826.5	-4,438.0	-165.9	383,503.33	733,915.35	32° 3' 7.622 N	103° 34' 42.013 W
14,034.0	89.90	181.80	9,826.7	-4,501.9	-168.1	383,439.37	733,913.23	32° 3' 6.989 N	103° 34' 42.043 W
14,097.0	90.40	181.30	9,826.5	-4,564.9	-169.8	383,376.39	733,911.52	32° 3' 6.366 N	103° 34' 42.068 W
14,124.0	90.60	181.30	9,826.3	-4,591.9	-170.4	383,349.40	733,910.91	32° 3' 6.099 N	103° 34' 42.077 W
14,170.0	90.60	181.30	9,825.8	-4,637.9	-171.4	383,303.42	733,909.87	32° 3' 5.644 N	103° 34' 42.093 W

14170' MD Projected to Bit - PBHL Salado Draw 9 A3CN Fed Com #1H

## Design Annotations

Measured Depth (usft)	Vertical Depth (usft)	+N/-S (usft)	+E/-W (usft)	Comment
9,060.0	9,058.9	10.9	-18.4	9060' MD MS Tie-In
14,170.0	9,825.8	-4,637.9	-171.4	14170' MD Projected to Bit