

DISTRICT I  
1625 N. French Dr., Hobbs, NM 88240  
Phone: (575) 393-6161 Fax: (575) 393-0720  
DISTRICT II  
811 S. First St., Artesia, NM 88210  
Phone: (575) 748-1283 Fax: (575) 748-9720  
DISTRICT III  
1000 Rio Brazos Road, Aztec, NM 87410  
Phone: (505) 334-6178 Fax: (505) 334-6170  
DISTRICT IV  
1220 S. St. Francis Dr., Santa Fe, NM 87505  
Phone: (505) 476-3460 Fax: (505) 476-3462

State of New Mexico  
Energy, Minerals & Natural Resources Department  
OIL CONSERVATION DIVISION  
1220 South St. Francis Dr.  
Santa Fe, NM 87505

Form C-102  
Revised August 1, 2011  
Submit one copy to appropriate  
District Office

☐ AMENDED REPORT

WELL LOCATION AND ACREAGE DEDICATION PLAT

<sup>1</sup> API Number 30-025-42392	<input checked="" type="checkbox"/>	<sup>2</sup> Pool Code 6660	<sup>3</sup> Pool Name Blinebry Oil and Gas (OIL)	<input checked="" type="checkbox"/>
<sup>4</sup> Property Code 314022	<input checked="" type="checkbox"/>	<sup>5</sup> Property Name <del>M State</del> <b>ENCORE M STATE</b>	<sup>6</sup> Well Number 18	<input checked="" type="checkbox"/>
<sup>7</sup> OGRID No. 370080	<input checked="" type="checkbox"/>	<sup>8</sup> Operator Name Breitburn Operating LP	<sup>9</sup> Elevation 3373'	<input checked="" type="checkbox"/>

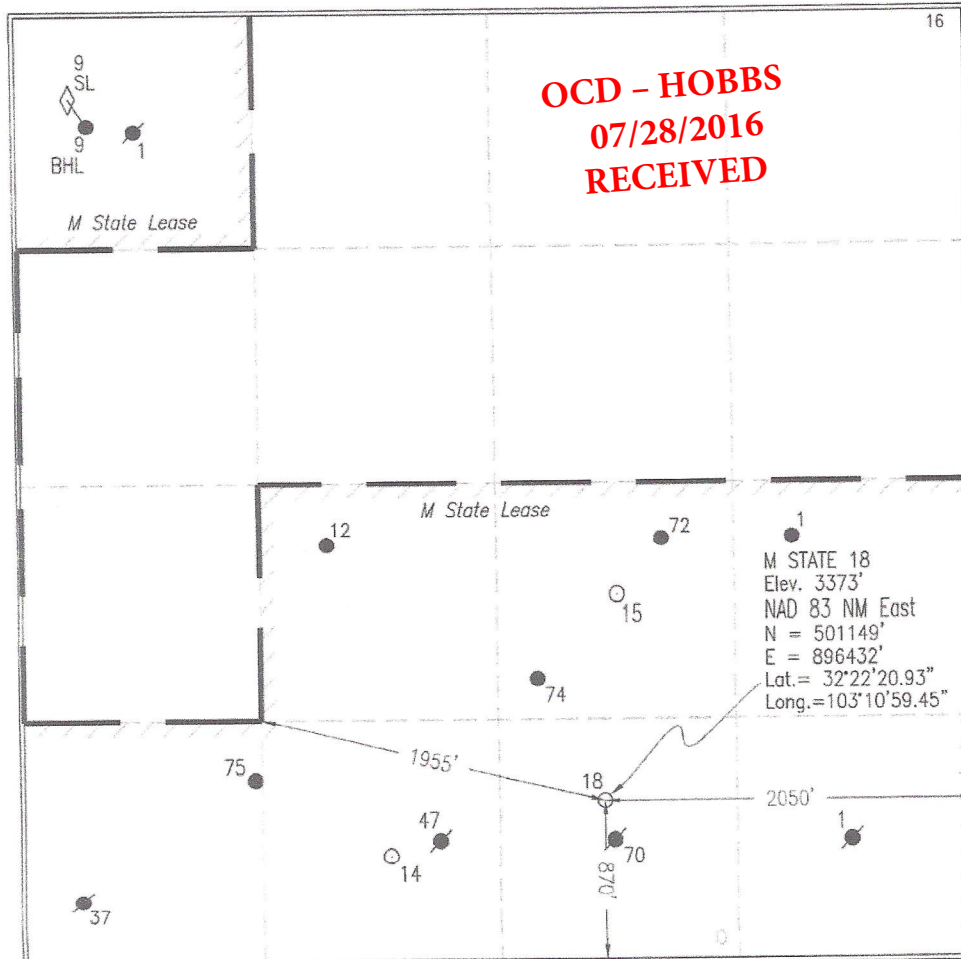
<sup>10</sup>Surface Location

UL or lot no.	Section	Township	Range	Lot Idn	Feet from the	North/South line	Feet from the	East/West line	County
0	20	22 S	37 E		870'	South	2050'	East	Lea

<sup>11</sup>Bottom Hole Location If Different From Surface

UL or lot no.	Section	Township	Range	Lot Idn	Feet from the	North/South line	Feet from the	East/West line	County
<sup>12</sup> Dedicated Acres 40	<sup>13</sup> Joint or Infill N	<sup>14</sup> Consolidation Code	<sup>15</sup> Order No.						

No allowable will be assigned to this completion until all interests have been consolidated or a non-standard unit has been approved by the division.



<sup>17</sup>OPERATOR CERTIFICATION

I hereby certify that the information contained herein is true and complete to the best of my knowledge and belief, and that this organization either owns a working interest or unleased mineral interest in the land including the proposed bottom hole location or has a right to drill this well at this location pursuant to a contract with an owner of such a mineral or working interest, or to a voluntary pooling agreement or a compulsory pooling order heretofore entered by the division.

*Jeanie McMillan* 2/3/15  
Signature Date

Jeanie McMillan

Printed Name

jeaniemcmillan@breitburn.com

E-mail Address

<sup>18</sup>SURVEYOR CERTIFICATION

I hereby certify that the well location shown on this plat was plotted from field notes of actual surveys made by me or under my supervision, and that the same is true and correct to the best of my belief.

12-17-2014

Date of Survey

Signature and Seal of Professional Surveyor

*Michael L. Stanford*  
10324  
Certificate Number

MICHAEL L. STANFORD  
NEW MEXICO  
REGISTERED PROFESSIONAL LAND SURVEYOR  
10324

4.5 Miles SW of Eunice, New Mexico.

File No. A-10010

DISTRICT I  
1625 N. French Dr., Hobbs, NM 88240  
Phone: (505) 393-6161 Fax: (505) 393-0720

DISTRICT II  
811 S. First St., Artesia, NM 88210  
Phone: (505) 748-1283 Fax: (505) 748-9720

DISTRICT III  
1000 Rio Brazos Road, Aztec, NM 87410  
Phone: (505) 334-6178 Fax: (505) 334-6170

DISTRICT IV  
1220 S. St. Francis Dr., Santa Fe, NM 87505  
Phone: (505) 476-3460 Fax: (505) 476-3462

State of New Mexico  
Energy, Minerals & Natural Resources Department  
**OIL CONSERVATION DIVISION**  
1220 South St. Francis Dr.  
Santa Fe, NM 87505

Form C-102  
Revised August 1, 2011  
Submit one copy to appropriate  
District Office

☐ AMENDED REPORT

**WELL LOCATION AND ACREAGE DEDICATION PLAT**

<sup>1</sup> API Number 30-025-42392	<input checked="" type="checkbox"/>	<sup>2</sup> Pool Code 60240	<sup>3</sup> Pool Name TUBB OIL and GAS (Oil)	<input checked="" type="checkbox"/>
<sup>4</sup> Property Code 314022	<input checked="" type="checkbox"/>	<sup>5</sup> Property Name <del>M State</del> <b>ENCORE M STATE</b>		<sup>6</sup> Well Number 18
<sup>7</sup> GRID No. 370080	<input checked="" type="checkbox"/>	<sup>8</sup> Operator Name Breitbart Operating LP		<sup>9</sup> Elevation 3373'

<sup>10</sup>Surface Location

UL or lot no.	Section	Township	Range	Lot Idn	Feet from the	North/South line	Feet from the	East/West line	County
0	20	22 S	37 E		870'	South	2050'	East	Lea

<sup>11</sup>Bottom Hole Location If Different From Surface

UL or lot no.	Section	Township	Range	Lot Idn	Feet from the	North/South line	Feet from the	East/West line	County

<sup>12</sup> Dedicated Acres 40	<sup>13</sup> Joint or Infill N	<sup>14</sup> Consolidation Code	<sup>15</sup> Order No.
-------------------------------------	------------------------------------	----------------------------------	-------------------------

No allowable will be assigned to this completion until all interests have been consolidated or a non-standard unit has been approved by the division.

**OCD - HOBBS  
07/28/2016  
RECEIVED**

M. STATE 18  
Elev. 3373'  
NAD 83 NM East  
N = 501149'  
E = 896432'  
Lat. = 32°22'20.93"  
Long. = 103°10'59.45"

**17 OPERATOR CERTIFICATION**

I hereby certify that the information contained herein is true and complete to the best of my knowledge and belief, and that this organization either owns a working interest or unleased mineral interest in the land including the proposed bottom hole location or has a right to drill this well at this location pursuant to a contract with an owner of such a mineral or working interest, or to a voluntary pooling agreement or a compulsory pooling order heretofore entered by the division.

Signature: *Shelly Doescher* Date: 08/27/2015

Printed Name: Shelly Doescher

E-mail Address: shelly\_doescher@yahoo.com

**18 SURVEYOR CERTIFICATION**

I hereby certify that the well location shown on this plat was plotted from field notes of actual surveys made by me or under my supervision, and that the same is true and correct to the best of my belief.

Date of Survey: 12-17-2014

Signature and Seal of Professional Surveyor: *Michael L. Stanford*

Certificate Number: 10324

4.5 Miles SW of Eunice, New Mexico.

File No. A-10010



☐ AMENDED REPORT

## WELL LOCATION AND ACREAGE DEDICATION PLAT

<sup>1</sup> API Number 30-025-42392	✓	<sup>2</sup> Pool Code 19190	✓	<sup>3</sup> Pool Name Drinkard	✓
<sup>4</sup> Property Code 314022	✓	<sup>5</sup> Property Name M State <b>ENCORE M STATE</b>			<sup>6</sup> Well Number 18
<sup>7</sup> OGRIID No. 370080	✓	<sup>8</sup> Operator Name Breitburn Operating LP			<sup>9</sup> Elevation 3373'
	✓				✓

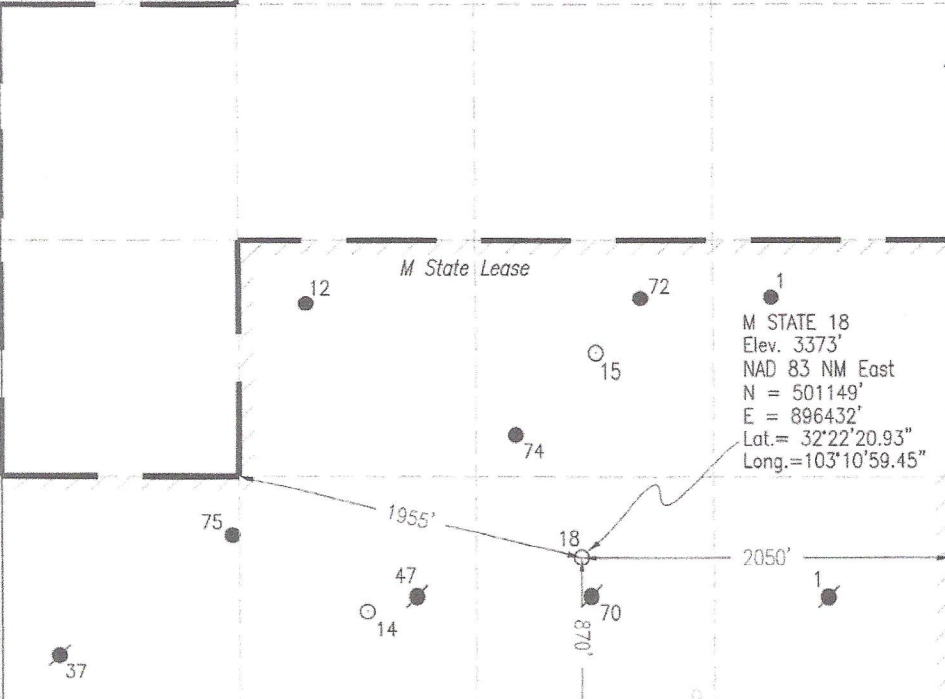
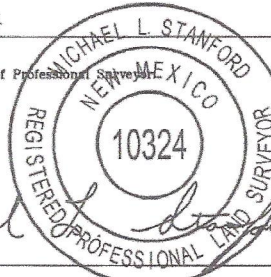
<sup>10</sup>Surface Location

UL or lot no.	Section	Township	Range	Lot Idn	Feet from the	North/South line	Feet from the	East/West line	County
0	20	22 S	37 E		870'	South	2050'	East	Lea

<sup>11</sup>Bottom Hole Location If Different From Surface

UL or lot no.	Section	Township	Range	Lot Idn	Feet from the	North/South line	Feet from the	East/West line	County
<sup>12</sup> Dedicated Acres 40	<sup>13</sup> Joint or Infill N	<sup>14</sup> Consolidation Code		<sup>15</sup> Order No.					

No allowable will be assigned to this completion until all interests have been consolidated or a non-standard unit has been approved by the division.

<div data-bbox="128 993 227 1117"><p>9 SL BHL 9 1</p></div> <div data-bbox="142 1155 284 1180"><p>M State Lease</p></div>	<div data-bbox="1003 959 1031 984"><p>16</p></div> <div data-bbox="600 1008 813 1161"><p>OCD - HOBBS 07/28/2016 RECEIVED</p></div> <div data-bbox="1052 959 1476 1161"><p><b>17 OPERATOR CERTIFICATION</b> I hereby certify that the information contained herein is true and complete to the best of my knowledge and belief, and that this organization either owns a working interest or unleased mineral interest in the land including the proposed bottom hole location or has a right to drill this well at this location pursuant to a contract with an owner of such a mineral or working interest, or to a voluntary pooling agreement or a compulsory pooling order heretofore entered by the division.</p></div>
 <div data-bbox="826 1499 1024 1665"><p>M STATE 18 Elev. 3373' NAD 83 NM East N = 501149' E = 896432' Lat.= 32°22'20.93" Long.=103°10'59.45"</p></div>	<div data-bbox="1052 1180 1476 1241"><p><i>Jeanie McMillan</i> 2/3/15 Signature Date</p></div> <div data-bbox="1052 1270 1476 1398"><p>Jeanie McMillan Printed Name jeaniemcmillan@breitburn.com E-mail Address</p></div> <div data-bbox="1052 1428 1476 1883"><p><b>18 SURVEYOR CERTIFICATION</b> I hereby certify that the well location shown on this plat was plotted from field notes of actual surveys made by me or under my supervision, and that the same is true and correct to the best of my belief.</p><p>12-17-2014 Date of Survey</p><p>Signature and Seal of Professional Surveyor</p><div data-bbox="1208 1608 1476 1883"></div><p><i>Michael</i> 10324 Certificate Number</p></div>

DISTRICT I  
1625 N. French Dr., Hobbs, NM 88240  
Phone: (575) 393-6161 Fax: (575) 393-0720

DISTRICT II  
811 S. First St., Artesia, NM 88210  
Phone: (575) 748-1283 Fax: (575) 748-9720

DISTRICT III  
1000 Rio Brazos Road, Aztec, NM 87410  
Phone: (505) 334-6178 Fax: (505) 334-6170

DISTRICT IV  
1220 S. St. Francis Dr., Santa Fe, NM 87505  
Phone: (505) 476-3460 Fax: (505) 476-3462

State of New Mexico  
Energy, Minerals & Natural Resources Department  
OIL CONSERVATION DIVISION  
1220 South St. Francis Dr.  
Santa Fe, NM 87505

Form C-102  
Revised August 1, 2011  
Submit one copy to appropriate  
District Office

☐ AMENDED REPORT

WELL LOCATION AND ACREAGE DEDICATION PLAT

<sup>1</sup> API Number 30-025-42392	<input checked="" type="checkbox"/>	<sup>2</sup> Pool Code 62700	<input checked="" type="checkbox"/>	<sup>3</sup> Pool Name WANTZ; ABO	<input checked="" type="checkbox"/>
<sup>4</sup> Property Code 314022	<input checked="" type="checkbox"/>	<sup>5</sup> Property Name <del>M State</del> <b>ENCORE M STATE</b>	<input checked="" type="checkbox"/>	<sup>6</sup> Well Number 18	<input checked="" type="checkbox"/>
<sup>7</sup> GRID No. 370080	<input checked="" type="checkbox"/>	<sup>8</sup> Operator Name Breitburn Operating LP	<input checked="" type="checkbox"/>	<sup>9</sup> Elevation 3373'	<input checked="" type="checkbox"/>

<sup>10</sup>Surface Location

UL or lot no.	Section	Township	Range	Lot Idn	Feet from the	North/South line	Feet from the	East/West line	County
0	20	22 S	37 E		870'	South	2050'	East	Lea

<sup>11</sup>Bottom Hole Location If Different From Surface

UL or lot no.	Section	Township	Range	Lot Idn	Feet from the	North/South line	Feet from the	East/West line	County

<sup>12</sup> Dedicated Acres 40	<sup>13</sup> Joint or Infill N	<sup>14</sup> Consolidation Code	<sup>15</sup> Order No.
-------------------------------------	------------------------------------	----------------------------------	-------------------------

No allowable will be assigned to this completion until all interests have been consolidated or a non-standard unit has been approved by the division.

**OCD - HOBBS  
07/28/2016  
RECEIVED**

M STATE 18  
Elev. 3373'  
NAD 83 NM East  
N = 501149'  
E = 896432'  
Lat. = 32°22'20.93"  
Long. = 103°10'59.45"

**<sup>17</sup>OPERATOR CERTIFICATION**  
I hereby certify that the information contained herein is true and complete to the best of my knowledge and belief, and that this organization either owns a working interest or unleased mineral interest in the land including the proposed bottom hole location or has a right to drill this well at this location pursuant to a contract with an owner of such a mineral or working interest, or to a voluntary pooling agreement or a compulsory pooling order heretofore entered by the division.

Signature: Jeanie McMillan Date: 2/3/15

Printed Name: Jeanie McMillan

E-mail Address: jeanie.mcmillan@breitburn.com

**<sup>18</sup>SURVEYOR CERTIFICATION**  
I hereby certify that the well location shown on this plat was plotted from field notes of actual surveys made by me or under my supervision, and that the same is true and correct to the best of my belief.

Date of Survey: 12-17-2014

Signature and Seal of Professional Surveyor: Michael L. Stanford

Certificate Number: 10324

4.5 Miles SW of Eunice, New Mexico.

File No. A-10010