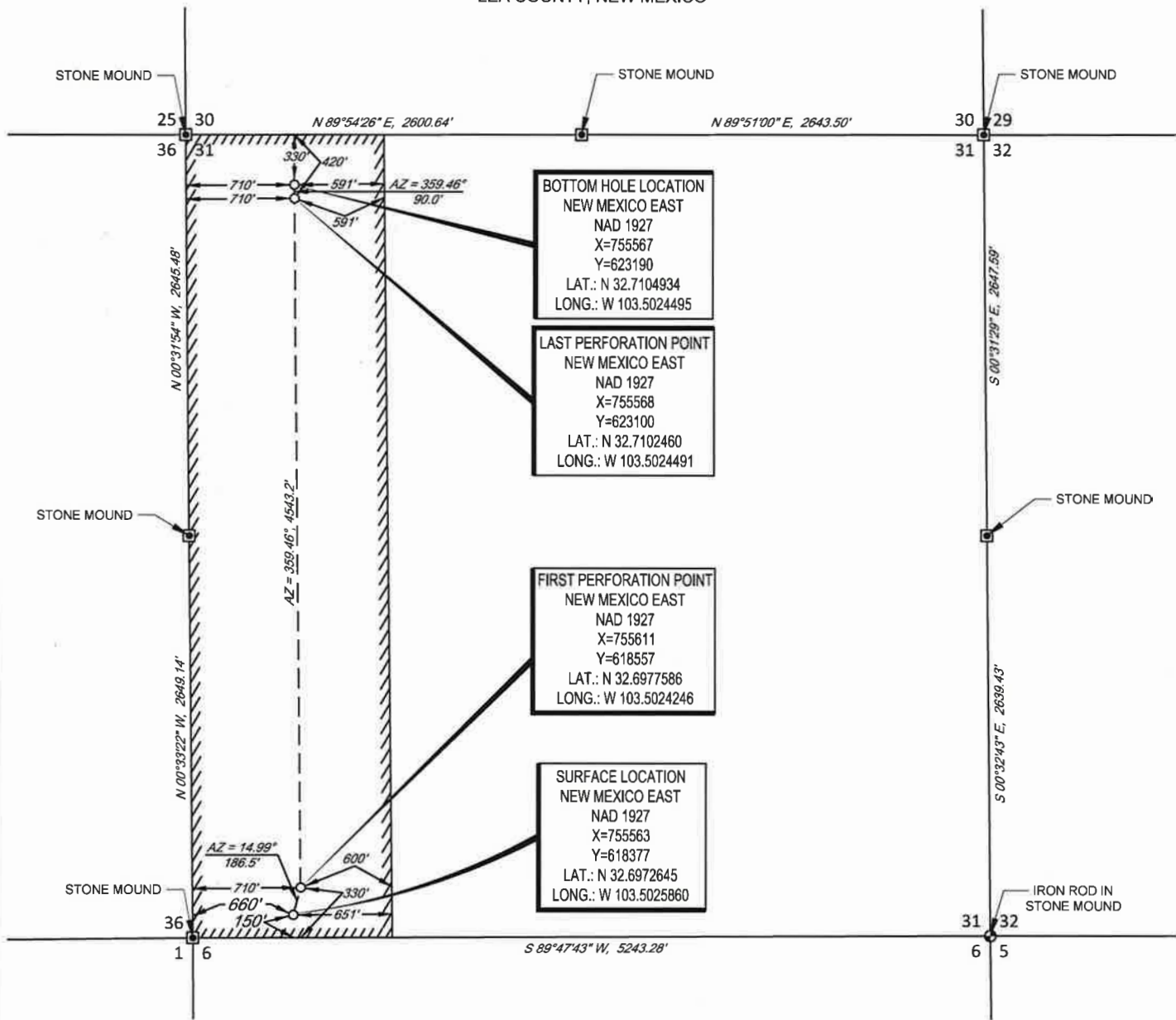




OCD - HOBBS
08/24/2016
RECEIVED

SECTION 31, TOWNSHIP 18-S, RANGE 35-E, N.M.P.M.
LEA COUNTY, NEW MEXICO



SCALE: 1" = 1000'
0' 500' 1000'

LEASE NAME & WELL NO.: AIRSTRIP 31 18S 35E RN STATE COM #201H
SECTION 31 TWP 18-S RGE 35-E SURVEY N.M.P.M.
COUNTY LEA STATE NM
DESCRIPTION 150' FSL & 660' FWL

DISTANCE & DIRECTION
FROM INT. OF NM-529 & NM-238 GO WEST ON NM-529 ±4.5 MILES
TO A POINT ±250 FEET SOUTH OF THE LOCATION.

ALL BEARINGS, DISTANCES, AND COORDINATE VALUES CONTAINED HEREON ARE GRID
BASED UPON THE NEW MEXICO STATE PLANE COORDINATE SYSTEM, EAST ZONE OF THE
NORTH AMERICAN DATUM 1927, U.S. SURVEY FEET
THIS EASEMENT/SERVITUDE LOCATION SHOWN HEREON HAS BEEN SURVEYED ON THE GROUND
UNDER MY SUPERVISION AND PREPARED ACCORDING TO THE EVIDENCE FOUND AT THE TIME OF
SURVEY, AND DATA PROVIDED BY MATADOR PRODUCTION COMPANY. THIS CERTIFICATION IS MADE
AND LIMITED TO THOSE PERSONS OR ENTITIES SHOWN ON THE FACE OF THIS PLAT AND IS
NON-TRANSFERABLE. THIS SURVEY IS CERTIFIED FOR THIS TRANSACTION ONLY.



Michael Blake Brown, P.S. No. 18329
AUGUST 04, 2015

 **TOPOGRAPHIC**
LOYALTY INNOVATION LEGACY
1400 EVERMAN PARKWAY, Ste. 197 • FT. WORTH, TEXAS 76140
TELEPHONE: (817) 744-7512 • FAX: (817) 744-7548
2803 NORTH BIG SPRING • MIDLAND, TEXAS 79705
TELEPHONE: (432) 682-1653 OR (800) 767-1653 • FAX (432) 682-1743
WWW.TOPOGRAPHIC.COM