

DISTRICT I  
1025 N. French Dr., Hobbs, NM 88240  
Phone (575) 393-8161 Fax: (575) 393-0720  
DISTRICT II  
811 S. First St., Artesia, NM 88210  
Phone (575) 748-1283 Fax: (575) 748-0720

DISTRICT III  
1000 Rio Brazos Rd., Aztec, NM 87410  
Phone (505) 334-8178 Fax: (505) 334-8170

DISTRICT IV  
1220 S. St. Francis Dr., Santa Fe, NM 87505  
Phone (505) 478-3353 Fax: (505) 478-3462

State of New Mexico  
Energy, Minerals and Natural Resources Department

Form C-102  
Revised August 1, 2011

Submit one copy to appropriate  
District Office

OIL CONSERVATION DIVISION

1220 South St. Francis Dr.  
Santa Fe, New Mexico 87505

WELL LOCATION AND ACREAGE DEDICATION PLAT

☐ AMENDED REPORT

API Number 30-025-43448	Pool Code 97293	Pool Name Ojo Chiso; Bone Spring, South
Property Code 316843	Property Name PUCKER RAPID STATE COM	Well Number 1H
OGRID No. 260511	Operator Name GMT EXPLORATION COMPANY LLC	Elevation 3569'

Surface Location

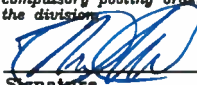
UL or lot No.	Section	Township	Range	Lot Idn	Feet from the	SOUTH/South line	Feet from the	East/West line	County
M	2	22 S	34 E		200	SOUTH	455	WEST	LEA

Bottom Hole Location If Different From Surface

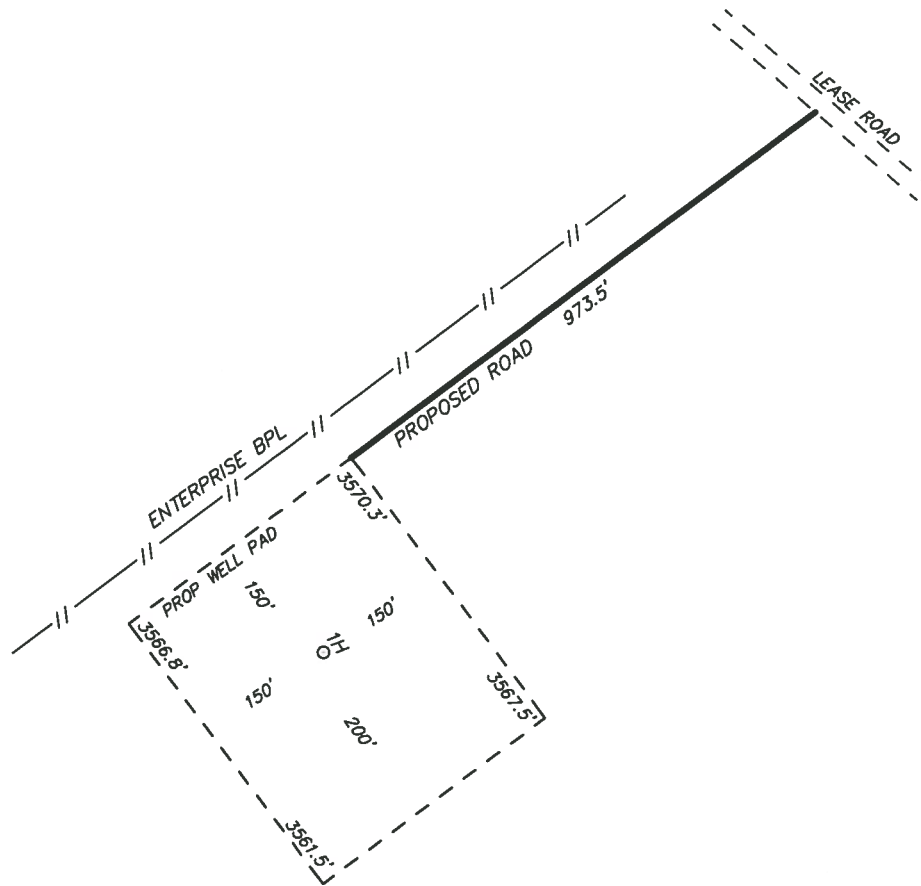
UL or lot No.	Section	Township	Range	Lot Idn	Feet from the	SOUTH/South line	Feet from the	East/West line	County
D	2	22 S	34 E		330	NORTH	330	WEST	LEA

Dedicated Acres	Joint or Infill	Consolidation Code	Order No.
-----------------	-----------------	--------------------	-----------

NO ALLOWABLE WILL BE ASSIGNED TO THIS COMPLETION UNTIL ALL INTERESTS HAVE BEEN CONSOLIDATED  
OR A NON-STANDARD UNIT HAS BEEN APPROVED BY THE DIVISION

<p>N: 520626.5 E: 814138.3 (NAD83)</p> <p>330'</p> <p>330'</p>	<p><b>BOTTOM HOLE LOCATION</b> Lat - N 32°25'28.14" Long - W 103°26'53.22" NMSPCE- N 520300.1 E 814468.3 (NAD-83)</p>	<p>N: 520684.5 E: 819415.3 (NAD83)</p>	<p><b>OPERATOR CERTIFICATION</b> I hereby certify that the information contained herein is true and complete to the best of my knowledge and belief, and that this organization either owns a working interest or unleased mineral interest in the land including the proposed bottom hole location or has a right to drill this well at this location pursuant to a contract with an owner of such a mineral or working interest, or to a voluntary pooling agreement or a compulsory pooling order heretofore entered by the division.</p> <p> 10/4/16 Signature Date Keith Kress Printed Name kkress@gmtexploration.com Email Address</p>
<p>4946'</p>	<p><b>PENETRATION POINT</b> 200' FSL &amp; 330' FWL Lat - N 32°24'50.49" Long - W 103°26'53.34" NMSPCE- N 515485.1 E 814498.2 (NAD-83)</p>		<p><b>SURVEYOR CERTIFICATION</b> I hereby certify that the well location shown on this plat was plotted from field notes of actual surveys made by me or under my supervision, and that the same is true and correct to the best of my belief.</p> <p>AUGUST 23, 2016 Date Surveyed Signature &amp; Seal of Professional Surveyor 7977 Certificate No. 7977 BASIC SURVEYOR</p>
<p>N: 515282.6 E: 814169.5 (NAD83)</p> <p>P.P. S.L. 455' 200'</p>	<p><b>SURFACE LOCATION</b> Lat - N 32°24'50.49" Long - W 103°26'51.88" NMSPCE- N 515485.8 E 814623.2 (NAD-83)</p>	<p>N: 515302.9 E: 818807.5 (NAD83)</p>	<p>0' 500' 1000' 1500' 2000' SCALE: 1" = 1000' WO Num.: 32428</p>

SECTION 2, TOWNSHIP 22 SOUTH, RANGE 34 EAST. N.M.P.M.,  
LEA COUNTY, NEW MEXICO.



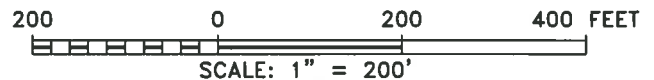
GMT EXPLORATION COMPANY LLC  
PUCKER RAPID STATE COM 1H  
ELEV. - 3569'

Lat - N 32°24'50.49"  
Long - W 103°26'51.88"  
NMSPCE- N 515485.8  
E 814623.2  
(NAD-83)

Directions to Location:

FROM MILE MARKER 19 GO SOUTHEAST 1160 FEET  
ON HIGHWAY 176 TO LEASE ROAD. GO SOUTHWEST  
5.3 MILES THEN GO SOUTHEAST 0.7 MILES TO  
PROPOSED ROAD.

EUNICE, NM IS ±17 MILES TO THE NORTHEAST OF LOCATION.



GMT EXPLORATION COMPANY LLC

REF: PUCKER RAPID STATE COM 1H / WELL PAD TOPO

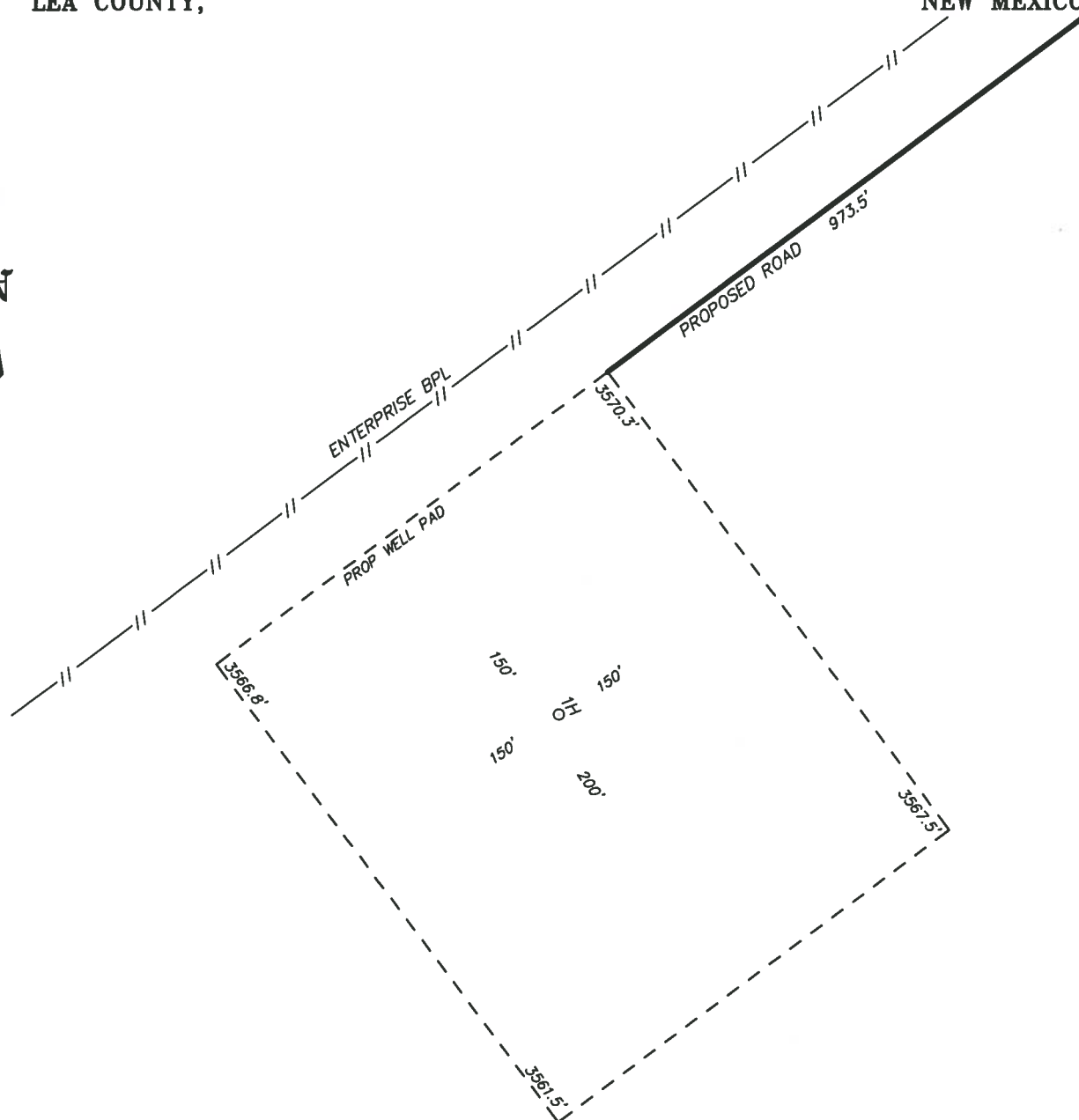
THE PUCKER RAPID STATE COM 1H LOCATED 200' FROM  
THE SOUTH LINE AND 455' FROM THE WEST LINE OF  
SECTION 2, TOWNSHIP 22 SOUTH, RANGE 34 EAST.

N.M.P.M., LEA COUNTY, NEW MEXICO.

**basin**  
**surveys**  
focused on excellence  
in the oilfield

P.O. Box 1786 (575) 393-7316 - Office  
1120 N. West County Rd. (575) 392-2206 - Fax  
Hobbs, New Mexico 88241 basin-surveys.com

SECTION 2, TOWNSHIP 22 SOUTH, RANGE 34 EAST. N.M.P.M.,  
LEA COUNTY, NEW MEXICO.



100 0 100 200 FEET  
SCALE: 1" = 100'

GMT EXPLORATION COMPANY LLC

REF: PUCKER RAPID STATE COM 1H / WELL PAD TOPO

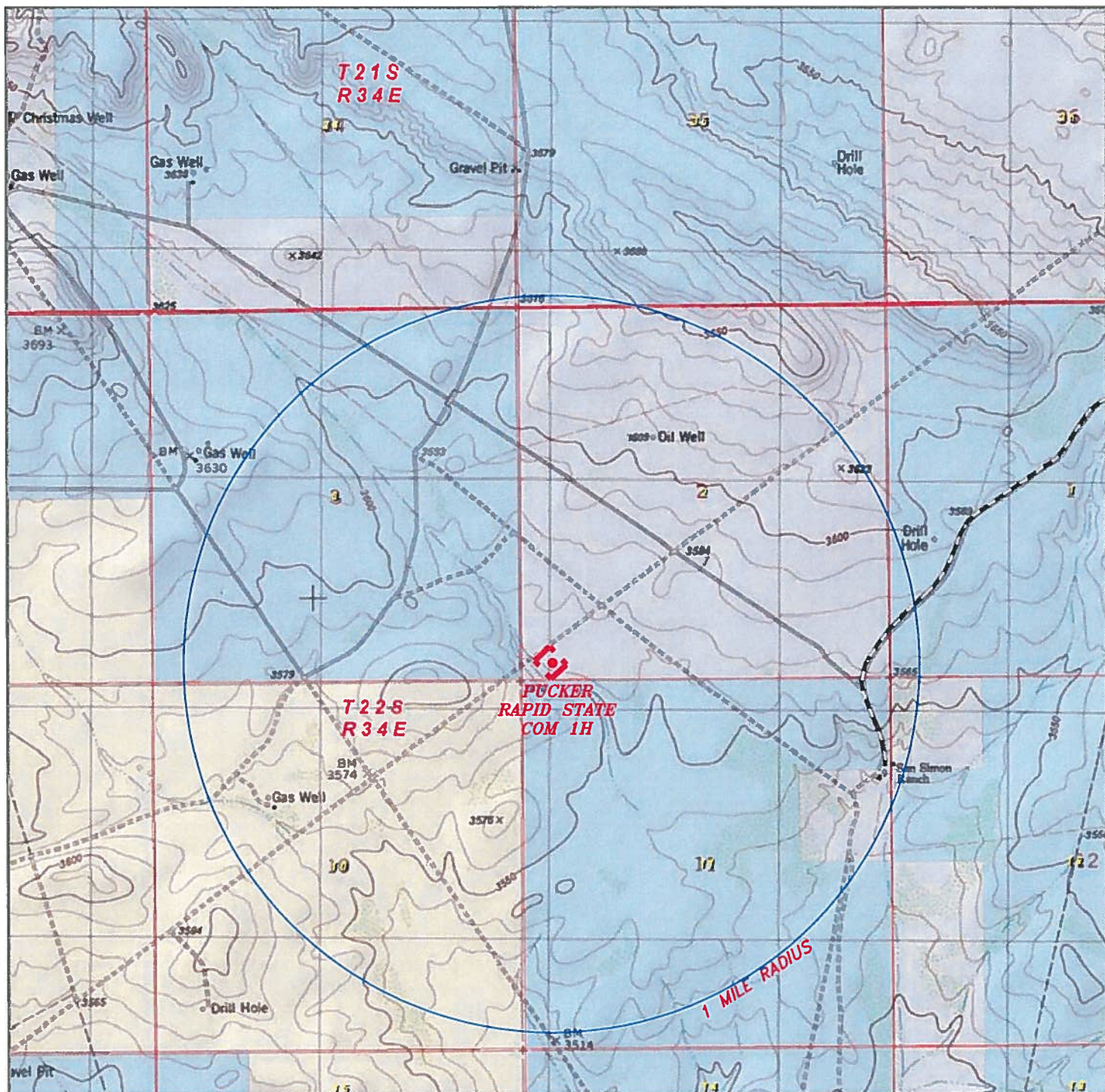
THE PUCKER RAPID STATE COM 1H LOCATED 200' FROM  
THE SOUTH LINE AND 455' FROM THE WEST LINE OF  
SECTION 2, TOWNSHIP 22 SOUTH, RANGE 34 EAST.  
N.M.P.M., LEA COUNTY, NEW MEXICO.

**basin**  
**surveys**  
focused on excellence  
in the oilfield

P.O. Box 1786 (575) 393-7316 - Office  
1120 N. West County Rd. (575) 392-2206 - Fax  
Hobbs, New Mexico 88241 basin-surveys.com

W.O. Number: 32428 Drawn By: J GOAD Date: 8-23-2016 Survey Date: 8-22-2016 Sheet 1 of 1 Sheets





## PUCKER RAPID STATE COM 1H

Located 200' FSL and 455' FWL  
 Section 2, Township 22 South, Range 34 East,  
 N.M.P.M., Lea County, New Mexico.



P.O. Box 1786  
 1120 N. West County Rd.  
 Hobbs, New Mexico 88241  
 (575) 393-7316 - Office  
 (575) 392-2206 - Fax  
 basinsurveys.com

0' 1000' 2000' 3000' 4000'  
 SCALE: 1" = 2000'

W.O. Number: JG 32428

Survey Date: 8-22-2016

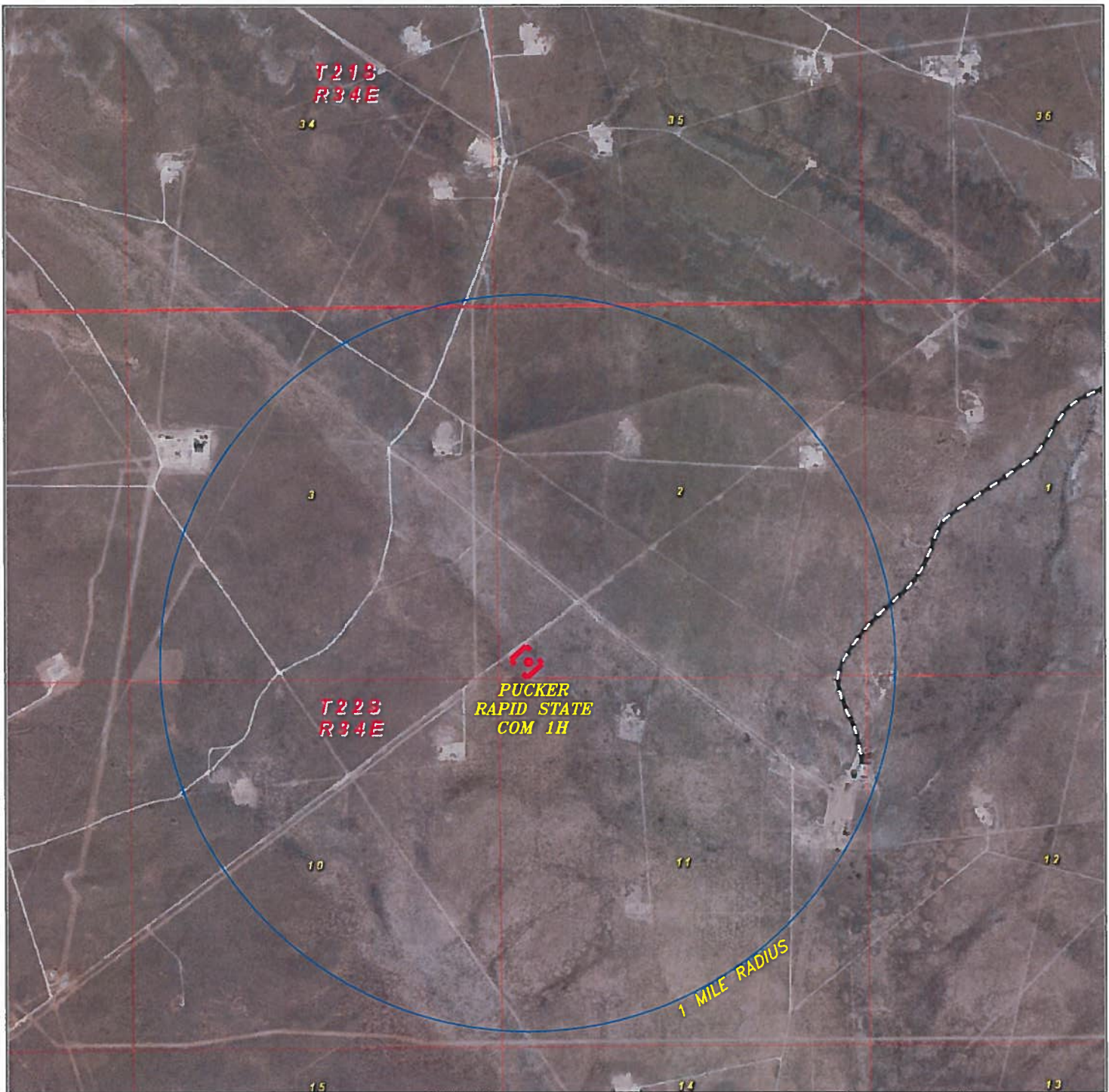
YELLOW TINT - USA LAND  
 BLUE TINT - STATE LAND  
 NATURAL COLOR - FEE LAND



GMT  
 EXPLORATION  
 COMPANY LLC



GMT  
EXPLORATION  
COMPANY LLC



## PUCKER RAPID STATE COM 1H

Located 200' FSL and 455' FWL  
Section 2, Township 22 South, Range 34 East,  
N.M.P.M., Lea County, New Mexico.

**basin**  
**surveys**  
focused on excellence  
in the oilfield

P.O. Box 1786  
1120 N. West County Rd.  
Hobbs, New Mexico 88241  
(575) 393-7316 - Office  
(575) 392-2206 - Fax  
basinsurveys.com

0' 1000' 2000' 3000' 4000'  
SCALE: 1" = 2000'

W.O. Number: JG 32428

Survey Date: 8-22-2016

YELLOW TINT - USA LAND  
BLUE TINT - STATE LAND  
NATURAL COLOR - FEE LAND



GMT  
EXPLORATION  
COMPANY LLC