
Surface Use & Operating Plan

Deep Purple SWD #1

- Surface Tenant: Slash 46, Inc., PO Box 1358, Loving, NM 88256. Antelope Ridge Allotment No. 77032.
- New Road: 895' of new road
- Facilities: SWD facilities will be installed on well pad
- **Well Site Information**
 - V Door: East
 - Topsoil: East
 - Interim Reclamation: No IR planned. SWD facilities will require full pad.

Notes

Onsite: On-site was done by Fernando Banos (BLM); Riley Neatherlin and Todd Suter (Mesquite SWD, Inc.) and Harcrow Surveying on June 9, 2017. A second on-site was done by Fernando Banos and Bob Ballard (BLM); Clay Wilson and Todd Suter (Mesquite SWD, Inc.); Casey Summers (OXY); and Caleb (Harcrow Surveying) on October 3, 2017 for new location.

SURFACE USE AND OPERATING PLAN

1. Existing & Proposed Access Roads

- A. The well site survey and elevation plat for the proposed well is attached with this application. It was staked by Harcrow Surveying, Artesia, NM.
- B. All roads to the location are shown on the Access Road attachment. The existing lease roads are illustrated in green and are adequate for travel during drilling and disposal operations. Upgrading existing roads prior to drilling the well will be done where necessary. Proposed new access road is shown in red on the Access Road attachment and is shown in detail on the Access Road Detail attachment.
- C. Directions to location: See 600 x 600 plat
- D. Based on current road maintenance performed on other roads serving existing wells, we anticipate maintaining the lease roads leading to the proposed well pad at least once a year on dry conditions and twice a year in wetter conditions.

2. Proposed Access Road:

The Existing Road Map shows that 895' of new access road will be required for this location. If any road is required it will be constructed as follows:

The maximum width of the running surface will be 14'. The road will be crowned, ditched and constructed of 6" rolled and compacted caliche. Ditches will be at 3:1 slope and 4 feet wide. Water will be diverted where necessary to avoid ponding, prevent erosion, maintain good drainage, and to be consistent with local drainage patterns.

- A. The average grade will be less than 1%.
- B. No turnouts are planned.
- C. No cattleguard, culvert, gates, low water crossings or fence cuts are necessary.
- D. Surfacing material will consist of native caliche. Caliche will be obtained from the actual well site if available. If not available onsite, caliche will be hauled from the nearest BLM approved caliche pit.

3. Location of Existing Well:

The One-Mile Radius Map shows existing wells within a one-mile radius of the proposed wellbore.

4. Location of Existing and/or Proposed Facilities:

- A. There are currently no water disposal facilities at this well site.
- B. Upon successfully completion of this SWD well, we plan to install a disposal facility consisting of two desanders, two gun barrels, four oil tanks and six injection tanks.
- C. We plan to bring produced water to this facility via a buried pipeline, which will be permitted under separate ROW.
- D. Any additional caliche will be obtained from the actual well site. If caliche does not exist or is not plentiful from the well site, the caliche will be hauled from the nearest BLM approved caliche pit in Section 1-T23S-R31E. Alternate source will be the BLM caliche pit in Section 12-T22S-R31E. Any additional construction materials will be purchased from contractors.
 - 1) It will be necessary to run electric power to the facility. Power will be provided by Xcel Energy and ROW for powerlines to well location is requested. The power line route is shown in the Power Line Map attached.
 - 2) If completion of the well is successful, rehabilitation plans will include the following:
 - The original topsoil from the well site will be returned to the location, and the site will be re-contoured as close as possible to the original site.

5. Location and Type of Water Supply:

The well will be drilled with combination brine and fresh water mud system as outlined in the drilling program. The water will be obtained from a private source. Fresh water will come from Mesquite SWD, Inc.'s 128 Fresh water well in Section 31-T22S-R30E and the alternate source is Mesquite SWD, Inc.'s Pulley Fresh water well in Section 26-T24S-R28E. Brine water will come from Mesquite SWD, Inc.'s Malaga I Brine Station in Section 12-T23S-R28E and the alternate source is Mesquite SWD, Inc.'s Malaga II Brine Station in Section 20-T24S-R29E. No water well will be drilled on the location.

6. Source of Construction Materials and Location "Turn-Over" Procedure:

Obtaining caliche: One primary way of obtaining caliche to build locations and roads will be by "turning over" the location. This means, caliche will be obtained from the actual well site. Amount will vary for each pad. The procedure below has been approved by BLM personnel:

- A. Equipment that is needed to construct the proposed location will be as follows: Two dozers to flip the site for caliche and to move topsoil, one blade to level the surface, one

morograder to roll and compact this site, one backhoe to dig the cellar, one water truck to water location and dust abatement and two dump trucks to haul surface material. If caliche is not available onsite and have to haul caliche from a private pit, in addition to equipment mentioned above we will have 10 belly dumps and one front end loader.

- B. The time line to complete construction will be approximately 10 days.
- C. The top 6 inches of topsoil is pushed off and stockpiled along the south side of the location. Maximum height of the topsoil stock pile will be 3'.
- D. An approximate 160' X 160' area is used within the proposed well site to remove caliche.
- E. Subsoil is removed and stockpiled within the surveyed well pad.
- F. When caliche is found, material will be stock piled within the pad site to build the location and road.
- G. Then subsoil is pushed back in the hole and caliche is spread accordingly across entire location and road.
- H. There will be no interim reclamation. Once well is drilled, the stock piled top soil will be seeded in place.
- I. Neither caliche, nor subsoil will be stock piled outside of the well pad. Topsoil will be stockpiled along the edge of the pad as depicted in the Well Site Layout or survey plat.

In the event that no caliche is found onsite, caliche will be hauled in from the BLM caliche pit in Section 1-T23S-R31E or the BLM caliche pit in Section 12-T22S-R31E.

7. Methods of Handling Water Disposal:

- A. The well will be drilled utilizing a closed loop mud system. Drill cuttings will be held in roll-off style mud boxes and taken to R360's disposal site located at 4507 West Carlsbad Highway, Hobbs, NM 88240.
- B. Drilling fluids will be contained in steel mud pits and taken to R360's disposal site located at 4507 West Carlsbad Highway, Hobbs, NM 88240.
- C. Water produced from the well during completion will be held temporarily in steel tanks and then taken to an NMOC approved commercial disposal facility. R360's disposal site located at 4507 West Carlsbad Highway, Hobbs, NM 88240.
- D. This is a commercial SWD, therefore no water will be produced from this well.

- E. Garbage and trash produced during drilling or completion operations will be collected in a trash bin and hauled to an approved landfill-Lea Landfill LLC. Located at Mile Marker 64, Highway 62-180 East, P O Box 3247, Carlsbad, NM 88221. No toxic waste or hazardous chemicals will be produced by this operation.
- F. Human waste and grey water will need to be properly contained and disposed of. Proper disposal and elimination of waste and grey water may include but are not limited to portable septic systems and/or portable waste gathering systems (i.e. portable toilets).
- G. After the rig is moved out and the well is either completed or abandoned, all waste materials will be cleaned up within 30 days. In the event of a dry hole only a dry hole marker will remain.

8. Ancillary Facilities:

No airstrip, campsite or other facilities will be built as a result of the operation on this well.

9. Well Site Layout:

- A. The drill pad layout, with elevations staked by Harcrow Surveying, is shown in the Elevation Plat. Dimensions of the pad and pits are shown on the Rig Layout. V door direction is southwest. Topsoil, if available, will be stockpiled on the southeast side of location, per BLM specifications. No major cuts will be required.
- B. The Rig Layout Closed-Loop exhibit shows the proposed orientation of closed loop system and access road. No permanent living facilities are planned, but a temporary foreman/toolpusher's trailer will be on location during the drilling operations.

10. Plans for Restoration of the Surface:

- A. No Interim Reclamation is planned as proposed facilities will require use of the entire well pad. Should IR be possible, it will take place within six months after the well has been completed. The pad will be downsized by reclaiming the areas not needed for disposal operations. The portions of the pad that are not needed for disposal operations will be re-contoured to its original state as much as possible. The caliche that is removed will be reused to either build another pad site or for road repairs within the lease. The stockpiled topsoil will then be spread out reclaimed area and reseeded with a BLM approved seed mixture. In the event that the well must be worked over or maintained, it may be necessary to drive, park, and/or operate machinery on reclaimed land. This area will be repaired or reclaimed after work is complete.
- B. Final Reclamation: Upon plugging and abandoning the well all caliche for well pad and lease road will be removed and surface will be recountoured to reflect its surroundings as

much as possible within six months. Caliche will be recycled for road repair or reused for another well pad within the lease. If any topsoil remains, it will be spread out and the area will be re-seeded with a BLM approved mixture and re-vegetated as per BLM orders. When required by BLM, the well pad site will be restored to match pre-construction grades.

11. Surface Ownership:

- A. The surface is owned U.S. Government and is administered by the Bureau of Land Management. The surface is multiple uses with the primary uses of the region for grazing of livestock and the production of oil and gas.
- B. The surface tenant is Slash 46, Inc., PO Box 1358, Loving, NM 88256. Antelope Ridge Allotment No. 77032.
- C. The proposed road routes and surface location will be restored as directed by the BLM.

12. Other Information:

- A. The area around the well site is grassland and the topsoil is sandy. The vegetation is moderately sparse with native prairie grasses, some mesquite. No wildlife was observed but it is likely that mule deer, rabbits, coyotes and rodents traverse the area.
- B. There is no permanent or live water in the immediate area.
- C. There are no dwellings within 2 miles of this location.
- D. If needed, a Cultural Resources Examination is being prepared by Boone Arch Services of NM, LLC., 2030 North Canal, Carlsbad, New Mexico, 88220, phone # 575-885-1352 and the results will be forwarded to your office in the near future. Otherwise, **Mesquite SWD, Inc. will be participating in the Permian Basin MOA Program.**

13. Bond Coverage:

Bond Coverage is Statewide Bonds # NMB000612.

15. Operator's Representative:

The Mesquite SWD, Inc. representative responsible for assuring compliance with the surface use plan is as follows:

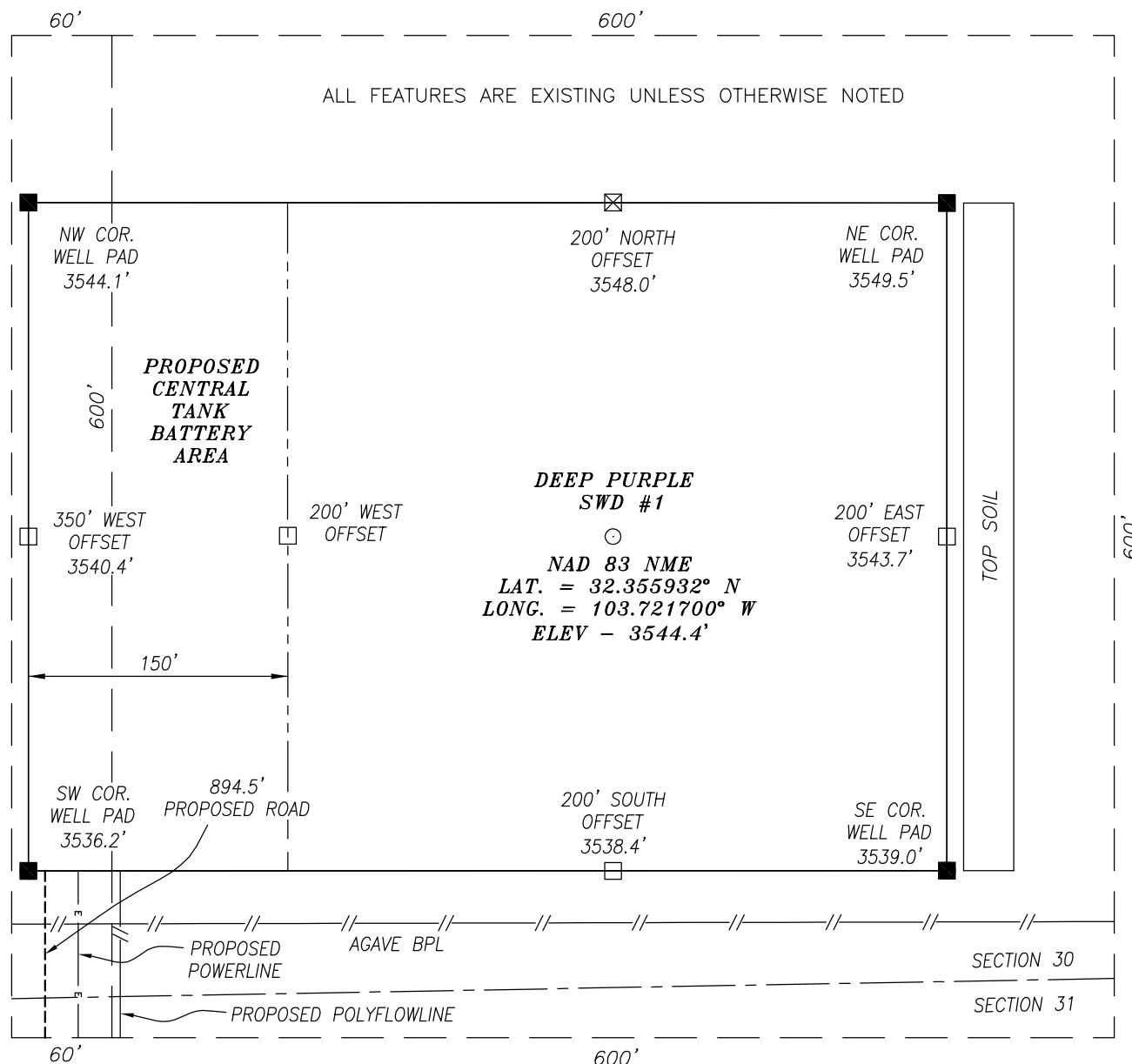
Riley Neatherlin
Production Manager
Mesquite SWD, Inc.
602 S Canyon Street
Carlsbad, NM 88220
Phone (575) 706-7288

Sheryl Baker
Drilling Manager
Mesquite SWD, Inc.
602 S Canyon Street
Carlsbad, NM 88220
Phone (575) 200-0227

SECTION 30, TOWNSHIP 22 SOUTH, RANGE 32 EAST, N.M.P.M.,

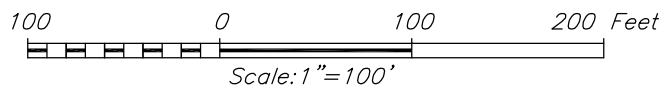
LEA COUNTY

NEW MEXICO



DIRECTIONS TO LOCATION

FROM THE INTERSECTION OF HIGHWAY 128 (JAL HIGHWAY) AND RED ROAD (C.R. 798) GO NORTH APPROX 13.3 MILES ON RED RD.; THEN TURN RIGHT ON A CALICHE ROAD AND GO APPROX 1.1 MILES TO THE PROPOSED ROAD. PROPOSED SWD IS APPROX. 1150 FEET NORTHNORTHEAST.



HARCROW SURVEYING, LLC
2314 W. MAIN ST, ARTESIA, N.M. 88210
PH: (575) 746-2158 FAX: (575) 746-2158
Texas Firm No. 10194089
c.harcrow@harcrowsurveying.com



MESQUITE SWD

DEEP PURPLE SWD #1 WELL
LOCATED 270 FEET FROM THE SOUTH LINE
AND 380 FEET FROM THE WEST LINE OF SECTION 30,
TOWNSHIP 22 SOUTH, RANGE 32 EAST, N.M.P.M.,
LEA COUNTY, NEW MEXICO

SURVEY DATE: OCTOBER 3, 2017	PAGE: 1 OF 1
DRAFTING DATE: OCTOBER 4, 2017	
APPROVED BY: CH	DRAWN BY: VD
	FILE: 17-1241



30-025-44106

Section 1 - General

Would you like to address long-term produced water disposal? NO

OCD – HOBBS
10/11/2017
RECEIVED

Section 2 - Lined Pits

Would you like to utilize Lined Pit PWD options? NO

Produced Water Disposal (PWD) Location:

PWD surface owner:

PWD disturbance (acres):

Lined pit PWD on or off channel:

Lined pit PWD discharge volume (bbl/day):

Lined pit specifications:

Pit liner description:

Pit liner manufacturers information:

Precipitated solids disposal:

Describe precipitated solids disposal:

Precipitated solids disposal permit:

Lined pit precipitated solids disposal schedule:

Lined pit precipitated solids disposal schedule attachment:

Lined pit reclamation description:

Lined pit reclamation attachment:

Leak detection system description:

Leak detection system attachment:

Lined pit Monitor description:

Lined pit Monitor attachment:

Lined pit: do you have a reclamation bond for the pit?

Is the reclamation bond a rider under the BLM bond?

Lined pit bond number:

Lined pit bond amount:

Additional bond information attachment:

Section 3 - Unlined Pits

Would you like to utilize Unlined Pit PWD options? NO

Produced Water Disposal (PWD) Location:

PWD surface owner:

PWD disturbance (acres):

Unlined pit PWD on or off channel:

Unlined pit PWD discharge volume (bbl/day):

Unlined pit specifications:

Precipitated solids disposal:

Describe precipitated solids disposal:

Precipitated solids disposal permit:

Unlined pit precipitated solids disposal schedule:

Unlined pit precipitated solids disposal schedule attachment:

Unlined pit reclamation description:

Unlined pit reclamation attachment:

Unlined pit Monitor description:

Unlined pit Monitor attachment:

Do you propose to put the produced water to beneficial use?

Beneficial use user confirmation:

Estimated depth of the shallowest aquifer (feet):

Does the produced water have an annual average Total Dissolved Solids (TDS) concentration equal to or less than that of the existing water to be protected?

TDS lab results:

Geologic and hydrologic evidence:

State authorization:

Unlined Produced Water Pit Estimated percolation:

Unlined pit: do you have a reclamation bond for the pit?

Is the reclamation bond a rider under the BLM bond?

Unlined pit bond number:

Unlined pit bond amount:

Additional bond information attachment:

Section 4 - Injection

Would you like to utilize Injection PWD options? NO

Produced Water Disposal (PWD) Location:

PWD surface owner:

PWD disturbance (acres):

Injection PWD discharge volume (bbl/day):

Injection well mineral owner:

Injection well type:

Injection well number:

Injection well name:

Assigned injection well API number?

Injection well API number:

Injection well new surface disturbance (acres):

Minerals protection information:

Mineral protection attachment:

Underground Injection Control (UIC) Permit?

UIC Permit attachment:

Section 5 - Surface Discharge

Would you like to utilize Surface Discharge PWD options? NO

Produced Water Disposal (PWD) Location:

PWD surface owner:

PWD disturbance (acres):

Surface discharge PWD discharge volume (bbl/day):

Surface Discharge NPDES Permit?

Surface Discharge NPDES Permit attachment:

Surface Discharge site facilities information:

Surface discharge site facilities map:

Section 6 - Other

Would you like to utilize Other PWD options? NO

Produced Water Disposal (PWD) Location:

PWD surface owner:

PWD disturbance (acres):

Other PWD discharge volume (bbl/day):

Other PWD type description:

Other PWD type attachment:

Have other regulatory requirements been met?

Other regulatory requirements attachment:



U.S. Department of the Interior
BUREAU OF LAND MANAGEMENT

Bond Info Data Report

10/10/2017

Bond Information

Federal/Indian APD: FED

BLM Bond number: NMB000612

BIA Bond number:

Do you have a reclamation bond? NO

Is the reclamation bond a rider under the BLM bond?

Is the reclamation bond BLM or Forest Service?

BLM reclamation bond number:

Forest Service reclamation bond number:

Forest Service reclamation bond attachment:

Reclamation bond number:

Reclamation bond amount:

Reclamation bond rider amount:

Additional reclamation bond information attachment: