

District I  
1625 N. French Dr., Hobbs, NM 88240  
Phone: (575) 393-6161 Fax: (575) 393-0720  
District II  
811 S. First St., Artesia, NM 88210  
Phone: (575) 748-1283 Fax: (575) 748-9720  
District III  
1000 Rio Brazos Road, Aztec, NM 87410  
Phone: (505) 334-6178 Fax: (505) 334-6170  
District IV  
1220 S. St. Francis Dr., Santa Fe, NM 87505  
Phone: (505) 476-3460 Fax: (505) 476-3462

State of New Mexico  
Energy, Minerals & Natural Resources Department  
OIL CONSERVATION DIVISION  
1220 South St. Francis Dr.  
Santa Fe, NM 87505

Form C-102  
Revised August 1, 2011  
Submit one copy to appropriate  
District Office

☐ AMENDED REPORT

WELL LOCATION AND ACREAGE DEDICATION PLAT

<sup>1</sup> API Number	<sup>2</sup> Pool Code	<sup>3</sup> Pool Name
	98116	WC-25 G-09 S253402N; Wolfcamp
<sup>4</sup> Property Code	<sup>5</sup> Property Name	<sup>6</sup> Well Number
	CRESTED BUTTE WCXY STATE COM	1H
<sup>7</sup> OGRID No.	<sup>8</sup> Operator Name	<sup>9</sup> Elevation
372031	OneEnergy Partners Operating LLC	3513.6'

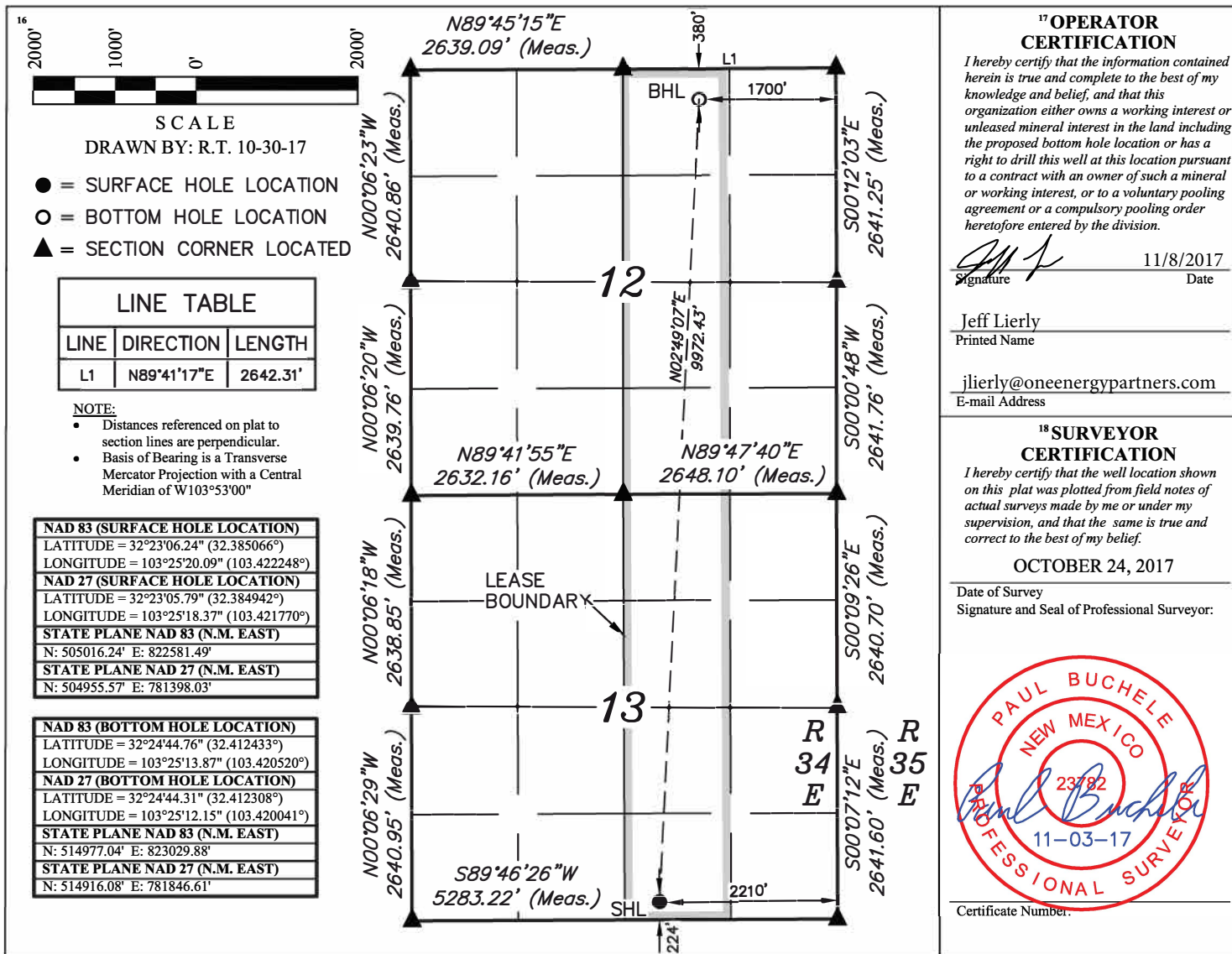
<sup>10</sup> Surface Location

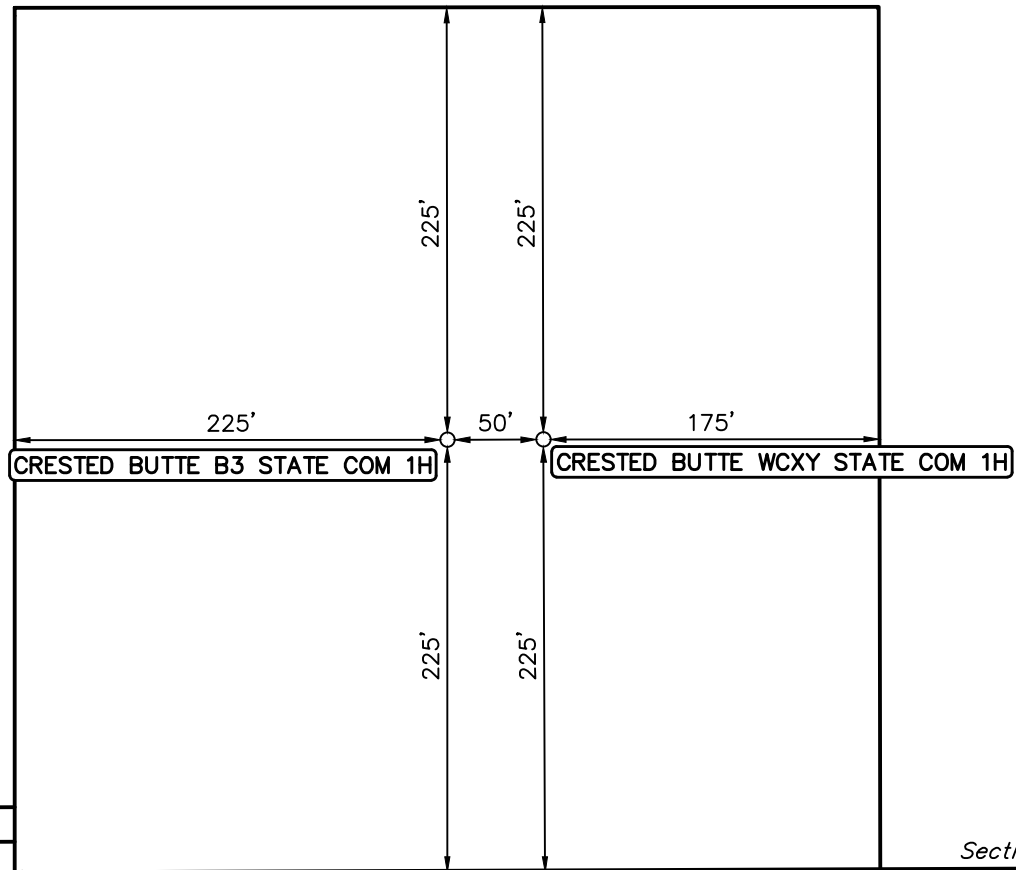
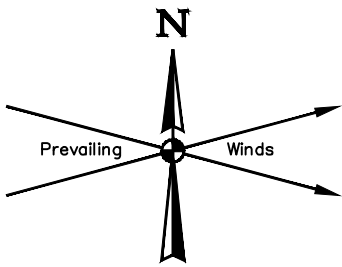
UL or lot no.	Section	Township	Range	Lot Idn	Feet from the	North/South line	Feet from the	East/West line	County
O	13	22S	34E		224	SOUTH	2210	EAST	LEA

<sup>11</sup> Bottom Hole Location If Different From Surface

UL or lot no.	Section	Township	Range	Lot Idn	Feet from the	North/South line	Feet from the	East/West line	County
B	12	22S	34E		380	NORTH	1700	EAST	LEA
<sup>12</sup> Dedicated Acres	<sup>13</sup> Joint or Infill	<sup>14</sup> Consolidation Code	<sup>15</sup> Order No.						
320									

No allowable will be assigned to this completion until all interests have been consolidated or a non-standard unit has been approved by the division.





Section 13  
Section 24

REV: 1 10-30-17 R.T. (ADD WELL)

NOTES:

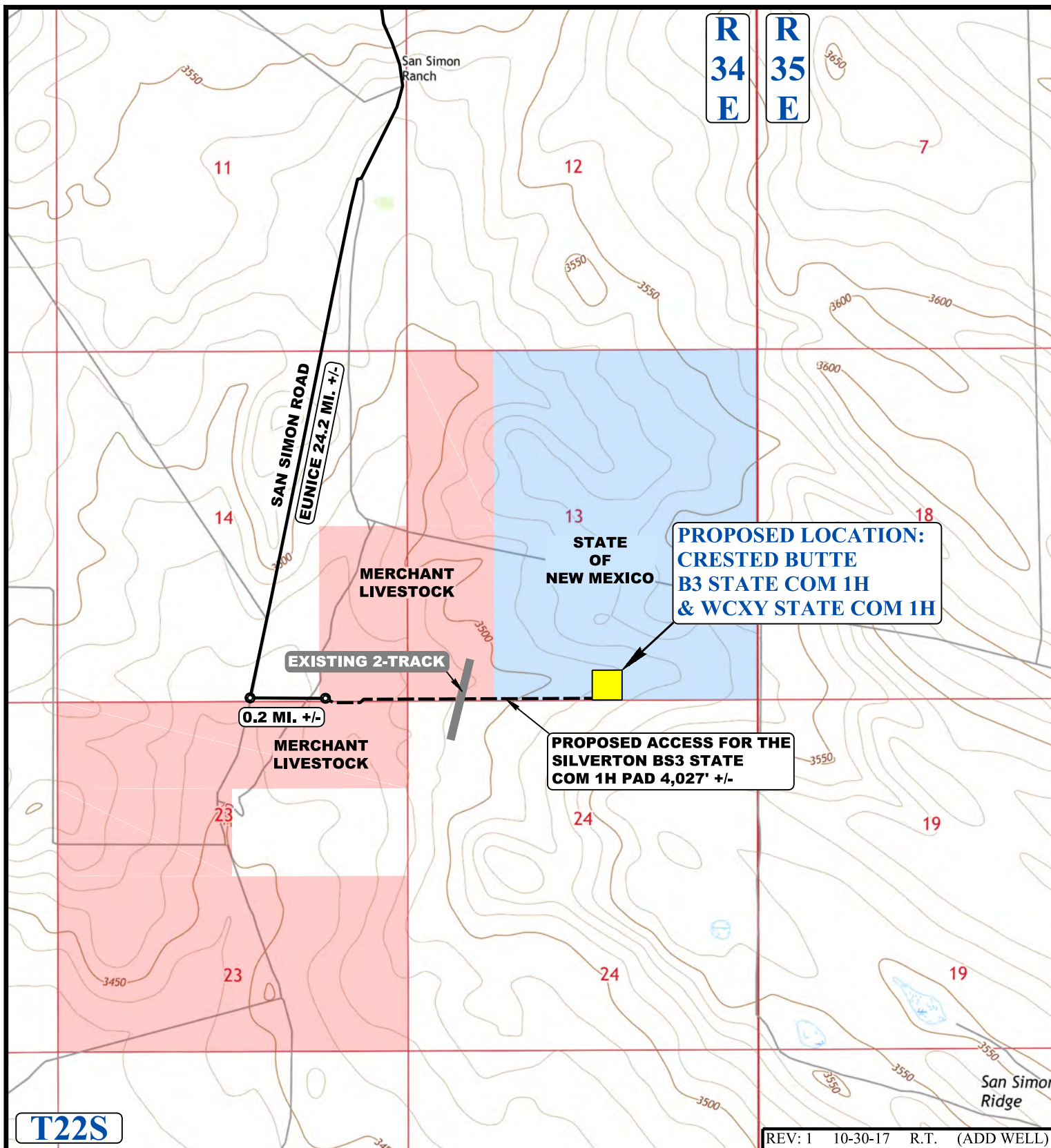
**OneEnergy Partners Operating LLC**

**CRESTED BUTTE B3 STATE COM 1H  
& WCXY STATE COM 1H  
SW 1/4 SE 1/4, SECTION 13, T22S, R34E, N.M.P.M.  
LEA COUNTY, NEW MEXICO**

SURVEYED BY	A.H., A.G.	10-30-17	SCALE
DRAWN BY	R.T.	08-16-17	1" = 100'
<b>SITE PLAN</b>			



**UELS, LLC**  
Corporate Office \* 85 South 200 East  
Vernal, UT 84078 \* (435) 789-1017



NOTE: PARCEL DATA SHOWN HAS BEEN OBTAINED FROM VARIOUS SOURCES AND SHOULD BE USED FOR MAPPING, GRAPHIC AND PLANNING PURPOSES ONLY. NO WARRANTY IS MADE BY UINTAH ENGINEERING AND LAND SURVEYING (UELS) FOR ACCURACY OF THE PARCEL DATA.

#### LEGEND:

- EXISTING ROAD
- EXISTING 2-TRACK
- PROPOSED ROAD (SERVICING OTHER WELLS)



**UELS, LLC**  
Corporate Office \* 85 South 200 East  
Vernal, UT 84078 \* (435) 789-1017



#### OneEnergy Partners Operating LLC

**CRESTED BUTTE B3 STATE COM 1H  
& WCXY STATE COM 1H**  
SW 1/4 SE 1/4, SECTION 13, T22S, R34E, N.M.P.M.  
LEA COUNTY, NEW MEXICO

SURVEYED BY	A.H., A.G.	10-30-17	SCALE
DRAWN BY	R.T.	09-07-17	1 : 24,000
<b>ACCESS ROAD MAP</b>			<b>TOPO B</b>

REV: 1 10-30-17 R.T. (ADD WELL)





REV: 1 10-30-17 R.T. (ADD WELL)

**LEGEND:**

-  EXISTING ROAD
-  EXISTING 2-TRACK
-  PROPOSED ROAD
-  (SERVICING OTHER WELLS)



**UELS, LLC**  
Corporate Office \* 85 South 200 East  
Vernal, UT 84078 \* (435) 789-1017



**OneEnergy Partners Operating LLC**

**CRESTED BUTTE B3 STATE COM 1H  
& WCXY STATE COM 1H**  
SW 1/4 SE 1/4, SECTION 13, T22S, R34E, N.M.P.M.  
LEA COUNTY, NEW MEXICO

SURVEYED BY	A.H., A.G.	10-30-17	SCALE
DRAWN BY	R.T.	09-07-17	1 : 24,000
<b>AERIAL MAP</b>			<b>TOPO 1</b>